

# The Monarch



Volume 8, Number 5

Saint Leo College, Saint Leo Florida

November 6, 1981



By Mary Ann DeMeo  
Monarch News Editor  
ARLENE HARRIS President of Circle K Club.

## Circle K Inducts Thirteen New Members ... Getting Together To Lend A Helping Hand



Lt. Governor of Kiwanis International, MR. RAY DEAN, inducts ENRICO MAZZANTI.

Thirteen new members were inducted into the Circle K Club at its annual induction dinner on October 28, 1981, at the Seawolf Restaurant, in Tampa. Of the new members these included: Michelle Dodds, Dino Napolitano, Pattie Smith, Yolanda Roberts, Dianne Musson, Dwyana Dupigny, Antoinette Bowe, Angie Lim Sue, Enrico Mozarti, Delton Eargueson, Sarah Woolsey, Sharon Lyn, and Maritz Hernandez.

Distinguished guests at the banquet included Lt. Governor of Kiwanis

International, Division 7, Mr. Ray Dean, from Zephyrhills. Also present was Mr. Roy Hardy, Governor Elect of the State of Florida, Kiwanis, who is from Dade City.

After the dinner, President Arlene Harris presided over a meeting in which she explained the purposes of Circle K organization, its criteria expected for new members, and functions that Circle K undertakes to truly perform as a service organization. Arlene commented on past service projects such as the recent

run-a-thon to raise funds for the 1984 Olympics, helping out at the San Antonio Rattlesnake Festival, serving at the President's Ball during Homecoming Weekend, running a booth in the Greek Festival, visiting the geriatric center in Dade City to hold a Halloween party, and the upcoming Punk Rock dance on November 6, in the student center, not to mention the Bike-a-thon for Cystic Fibrosis, to be held.

After a speech by Kerri Griffis, Pasco Comprehensive High School Key Club President, Lt. Governor

Ray Dean inducted the thirteen new members in a ceremony which included pinning, and presenting members with Circle K T-shirts and packets. Flowers were then presented to President Arlene Harris, her mother, and the wives of the guest Kiwanians present. A final speech by Gov. elect Roy Hardy ended the event on a high note when he stressed the unity and pride exemplified by Circle K Club, through the theme of being "Together for tomorrow."

## Rising Costs Of Tuition Explained

By Kevin Bethel  
Monarch Associate Editor

Since 1972-1973 academic year, average total expenses at four-year colleges have gone up 95% at public colleges and 110% at private colleges. This figure includes tuition and fees, room and board, books and supplies, transportation and personal expenses.

This year the average costs of attending a private four-year institution for resident students is \$6,885, up \$803 over last year's figures. Total costs at some four-year colleges approach or even exceed \$12,000 per year.

The following figures were tallied for students who commute: \$5,999 at private four-colleges; \$3,150 at public four-year colleges; \$4,717 at private two-year colleges; \$2,829 at public two-year colleges.\*

These figures represent an average 11% increase for private colleges and a 10% increase for public ones.

Last semester the cost of tuition and fees was \$1,500 whereas this semester ('81-'82) the tuition and fees have gone up to \$1,680. This shows an approximate increase of about 10%, which is equivalent to

the amount of inflationary hikes that the whole country is experiencing'.

"Salaries and utilities are the two biggest factors that has caused the increase to go in to effect,.....This is why I am so ticklish about conservation." Said Mr. Robert E. Richmond, Vice President for Business Affairs, Saint Leo College.

"The College is a non profit organization and it operates on a policy of charging students just enough so that it could stay in the black," he added. Mr Richmond went on to say that "Where salaries are concerned, the staff had to get an increase so that they could keep up with inflation.....things like social security, home mortgages and food bills.

In comparison to all the other colleges in Florida, (USF) University of South Florida, Barry, F.I.T., and many others Saint Leo's costs of tuition and fees is some where in the middle of the scale, and much less than some of the big name ones. (\*College Store Executive, October 1981, Vol. 12 No. 9)

## Phi Theta Chi Fraternity Sponsors Bi-Annual Blood Drive

By Joy Shepard

The bi-annual blood drive sponsored by Phi Theta Chi Fraternity at Saint Leo College and coordinated as a service project with St. Anthony's Blood Bank of St. Petersburg, is scheduled for November 10-12 on campus in Duncan Lounge, McDonald Student Center.

Now in its sixteenth year with this project, the Fraternity's efforts have resulted in a total of over 3,400 pints of blood being collected.

The hours for the blood drive will be from 10 a.m. until 4 p.m. on Tuesday

and Thursday with longer hours extended on Wednesday from 6:30-9 p.m.

A "blood insurance policy" is offered by St. Anthony's to any donor or member of their family for one year from the date of donation. The policy entitles the donor or family member to free blood when needed anywhere in the United States.

The blood drive is not restricted to members of the College community and active participation from residents of local communities is encouraged.

## Scholarship Bank Announces New Scholarship Grant Programs For 1981 Academic Year.

Never before has it become so urgent for students to investigate alternatives to federally funded student aid programs, according to Steve Danz, Director of The Scholarship Bank.

Now that "Reagonomics" is the law of the land, students can expect to see reduced or completely eliminated federal programs. This will make it mandatory to seek out private programs, such as those offered by private foundations, civic groups and trade organizations.

The Scholarship Bank will send students in need of financial aid a questionnaire in which the student answers a number of questions concerning interests, major, occupational goals, and financial need. The

Scholarship Bank then sends the student a print-out of all available aid sources. According to the director, the average student is receiving over 45 different aid sources. The information is up-dated daily and currently has in excess of 25,000 funding sources, making it the only service in which to find all available aid, including grants, loans, scholarships and work opportunities, for high school, undergrad and graduate students.

Students wishing to use the service (there is a modest fee) should send a stamped, self addressed envelope to The Scholarship Bank, 10100 Santa Monica Blvd., #750, Los Angeles, Ca. 90067.

HAPPY BIRTHDAY  
Tresea Berry,  
Love,

thinking about  
someone very  
special ... on  
a special  
occasion

The Monarch Staff.

# Commentary

• Editorials • Letters

## Letters

### The Cafeteria Food: Why Doesn't Anybody Like It?

By Jan Polack  
Monarch Assistant Editor

In the third issue of the Monarch newspaper, there were many varied, but negative opinions expressed about the cafeteria. No one seemed to have anything good to say in regard to the food on a whole.

The "Monarch" seeing this growing attitude among the students decided to investigate and perhaps find a solution to suit "everybody." Everybody, being the key word-there are 720 students on the meal plan and with their many fickle palates it would be well impossible to suit everyone. (A problem most fail to realize).

Looking at the meals served in the cafeteria-a typical supper consists of a dessert (maybe a choice of two different pies), then there is the entree and it is always a meat dish served with a soup or a hot vegetable. There is a selection of cold salads and of course the tossed salad with a choice of four salad dressings. Rolls, butter, salt and pepper, coffee and tea, soft drinks and ice tea are available to have with your meal. Strangely enough students do not seem to realize that for the money that they are paying this gives them a large selection for each meal. Working out the cost the cafeteria feeds you that large amount of food for about three dollars. There is no restaurant or fast food chain or even your own home that could feed you for that price.

The main complaints had to do with the meat dish. "Too much chicken, too much roastbeef." These are ridiculous statements for chicken and roastbeef are served only once a week and if it is served twice it is cooked in a different way. For the past week I have eaten veal, pork chops, spaghetti, corn beef and ham. "Where's all the chicken?" When the Monarch spoke to Dennis Quenville about the meat compla-

ints he commented that the meat is the most expensive part of the meal, so if students are willing to pay fifteen to twenty percent more for their food, the cafeteria would be able to buy the prime meat that so many students expect. The ball's in your court?

The next complaint, "The food tastes like..." The food cannot be highly seasoned because they run right smack into their original obstacle in that "they can't please everyone." Complaints would follow so that if students wish to add taste, the best they can do is provide salt and pepper.

The cafeteria suffers very much from vandalism and unnecessary wastage. Most students have the attitude "Well, I paid for it, I want my money's worth." Because of this idea, many students waste their food. If you don't think you can eat it, don't take it. The money that the cafeteria saves might be spent on better quality meats or produce.

Another unnecessary waste is the stealing (not borrowing) of cutlery and the vandalism of the eating area.

The money spent on replacing cutlery or paying a guard to prevent students from taking could be spent on improvements. Food fights are enjoyable for those participating, but the cleaning crew have a different story. "There used to be plants and curtains in the dining room but kids poured pepsis in the plants and killed them stone dead, and ketchup and mustard stains do not really look

nice on green curtains. "The students just have no respect for college property." remarked William (Williard) Elwell, assistant manager of Food Services. Sadly, many people find this characteristic of the students and the lack of discipline also hints at a lack of respect for oneself. This is not the case for everyone-it is most likely just a small group of students causing the problem.

In conclusion, the students will have to take some initiatives. Either you pay to receive what is a "good" meal or you make do with what you have. It is your decision!

**Dear Editor,**  
The City of San Antonio would like to express their appreciation to members of the Sigma Beta fraternity of Saint Leo College for their cooperation in acting a crossguards at various intersections in San Antonio on Halloween night. This precaution was taken for the safety of our "trick or treaters" and we wish to thank the following members for agreeing to take on this responsibility.

1. Mike Blaikie
2. Bryan Byrne
3. John McQuilken
4. Bob Murnane
5. Al Winsser
6. Mark Domkowski
7. Dan Ready

Also, thanks to the San Antonio Volunteer Fire Dept. for their assistance.

Malin K. Marsh, Mayor

### Science Department Grading Unfair

Dear Editor

I am writing to complain of an unfair practice put to use by some of the faculty in the science department. This is that senior students are used to grade a certain amount of the tests and quizzes. These students frequently make stupid mistakes that cause a lot of un-needed stress to the individual who takes the test or quiz.

Another reason why I object to this practice, is because sometimes the "grader" knows a few of the students and can give the one's he likes, good grades, and the one's he dislikes, bad grades. (After, all, the "grader" is supposed to be on the honor system).

If the faculty do not have the time to go over the test's after they have been marked, then they should go over them after they have been handed back to the students in class, to make sure that the test was graded and tallied correctly. If this is too much for them to do, then they should STOP giving tests and quizzes.

Sincerely,  
A Concerned Student

IT PAYS TO  
ADVERTISE  
IN THE  
  
The Monarch

## OPINIONS

By Devorah Elcock

### What Is The Most Neglected Aspect Of Saint Leo College?

Chief Editor .....	Theresa Schretzmann
Assistant Editor .....	Jan Polack
Associate Editor .....	Kevin Bethel
News Editor .....	Mary Ann DeMeo
Sports Editor .....	Tresea Berry
Art Editor .....	Paula Roush
Features Editor .....	Joseph Morley
Special Interests Editor .....	Dan Maguire
Photography .....	Stacey Wenisch
Advertising .....	Kevin Perridge
Reporters .....	Stephanie Phillips
	Patricia Cahill
	David Ciabotti
	Michelle Dodds
	Devorah Elcock
	Thomas Iraheta
	Mary Nahas
	Edward Mansoor
	Sherry Palamara
	Pamela Schuessler
	Chris Shaughnessy
	Paul Symonette
	Brenda Ayers
	Ernie Williams
	Tim Wise
	Joy Shepard
	Senator Lawton Chiles



The Monarch

Secretary/Office Mgr .....	Brenda Ayers
Moderator .....	Ernie Williams
Guest Contributors .....	Tim Wise
	Joy Shepard
	Senator Lawton Chiles

Layout .....	Theresa Schretzmann
	Jan Polack
	Tresea Berry
	Mary Ann DeMeo
	Kevin Bethel
	Paula Roush
	Dan Maguire
	Keith Mandel

The MONARCH is the official publication of the collegiate community of St. Leo College. Opinions expressed do not necessarily represent the views of the MONARCH staff, the college administration, or the faculty, unless otherwise stated. Articles letters to the editor, pictures, display advertisements, and other copy should be submitted ten (10) days prior to the next publication date. The MONARCH waives responsibility for the return of any copy left with us.

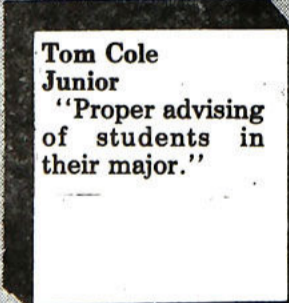
The MONARCH office is located in the Old Gym. Correspondence may be sent to P.O. Drawer 1, St. Leo, Fla. 33574 or phone (904) 582-8288 (ext 355).



**Wendy E. Bennett**  
Senior  
"The knowledge of advisors, concerning the courses required for each major course of study offered here."



**Marty Conway**  
Senior  
"The idea that scholastic ability demonstrated while at Saint Leo, plays an important part in attaining future goals."



**Tom Cole**  
Junior  
"Proper advising of students in their major."



**Maureen Lafferty**  
Junior  
"Participation of "all" the students!"



**David Bullock**  
Senior  
"The promotion of Saint Leo College and the lack of funds in the athletic department."



**Janer Hansen**  
Senior  
"Funding and support for women's athletics."



**Thomas Granato**  
Junior  
"Priviledges for the students, that are often given by the S.G.A. from time to time."



**Kathy Shannon**  
Junior  
"The most neglected aspect of Saint Leo College is the food service."



# The Fast Lane

By Dan Maguire

## A Wrong Turn And A Mistake

Last Friday night I was headed for school to do some research for a story and I guess I made a wrong turn somewhere because I ended up in Ocala. You can imagine my surprise. Since my brother lives there I decided to stop by his house and say hello. Well one thing leads to another and he and his wife took me out to a local lounge. I suppose they felt sorry for me after I told them what had happened.

As soon as we arrived I knew something was wrong. It was only 11 o'clock and there were so many people leaving that I figured the place was on fire. As the evening progressed it turned out to be unfortunate that it wasn't.

I had been to this place previously and without exception the entertainment was above average. This night would be exceptional.

At first we were impressed with the sophisticated equipment on stage but then the band came out. The leader stuttered through the intro while the bass guitarist and the drummer fumbled with their sheet music. Well maybe this is a new number, we thought. Later on we concluded that they were all new numbers and that the members of the band had never seen each other before. To say that they were bad would be like telling someone that

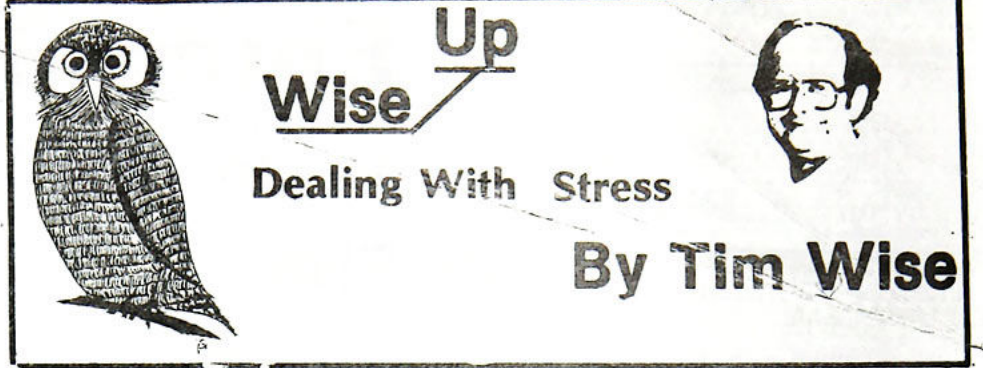
Physics is harder than College 101.

But wait, there's more. Half way through the second song six girls, in Las Vegas type costumes complete with feathers and high heels, danced onto the stage. They were all very attractive young ladies and one even managed to keep time with the noise the band was making. As it turned out the hope of seeing them again was the sole reason we stayed.

After a while, a long while, the band stopped whatever it was they were doing and a ventriloquist appeared. When we finally figured which one of the two figures on stage was alive, we realized that some of the stuff was actually funny. Still, the band got most of the laughs.

As we sat there in amazement at all of this my brother suggested that he had seen better shows at office parties. I felt he was being too kind. If there had been a cover charge I would have demanded a refund. I must admit that my sister-in-law did enjoy herself. However she was a bit grouchy when it was time to leave and we were forced to wake her.

If you end up in Ocala by accident, or if you go there on purpose, in the near future be sure to stop by the Foxfire Lounge and catch the show. If you do I'll guarantee that you will learn to appreciate the entertainment here at Saint Leo.



**Wise Up**  
Dealing With Stress  
By Tim Wise

Stress is a reaction to life's situations. Life is necessarily stressful. The day you were born, you began to experience stress. Without some stress we would fail to survive.

New situations tend to be stressful since we don't know how to cope with them. It is this stress which motivates us to learn.

When a situation becomes dangerous (stressful) to our well being, we have to decide either to run or to stay and fight. This is known as the flight or fight syndrome.

So, if stress is so good for keeping us healthy and alive, why then does it cause us so much trouble?

Perhaps the answer lies in the fact that many of our jobs (and classes) provide almost no way to deal with the stressfulness of the situation. Take the average businessman for instance. One day his boss walks in and chews him out for turning in a report late. The businessman cannot fight his boss (he might lose his job), and he cannot run (because he needs the job) so he lets it build up until he comes home--yells at the kids and kicks the dog.

Students experience this same reaction. Perhaps mid-terms or finals come due. Instead of being tested, you would rather not take it (but you might fail the course). You might stay and try to wade through all the work and take the test only to

learn that maybe you still did not know the material. This, in turn, leads to the stress of feeling like a failure. And, now here you are coming home yelling at your roommate and kicking the bed.

So, what can you do?

1. Learn to relax. Breathe deeply and concentrate on a peaceful surrounding such as a lake or a beach. Do this several times a day.
2. Learn to turn off the worry machine. I've never known constant worrying to help anyone.
3. Accept things as they are. Constantly beating ones head against the wall will only give you a headache.
4. Be realistic in setting goals. Unreasonable goals only reinforce our beliefs of inferiority.
5. Don't push so hard. Things will get done given time and organization.
6. Work to remain calm and in control of yourself at all times. Remember, some stress is good. Too much stress can lead to high blood pressure and stroke. Learn to relax and let off steam constructively.

Until next week,  
Take care,  
And, enjoy life!

\*(Tim Wise is the Director of Counseling here at Saint Leo College).

### Letters Policy

The MONARCH welcomes letters to the editor on all topics. Letters, triple-spaced and less than 300 words in length will receive primary consideration.

Libelous statements and those in poor taste will not be printed. Every letter must include the author's name signature and College classification. Names will be withheld on request.

## Pro And Con

By Jan Polack  
Monarch Assistant Editor

# Should The Theory Of Scientific Creationism Be Taught In The Education System?

PRO

CON



**Dr. Tyson Anderson,**  
Assistant Professor of  
Philosophy and Theology

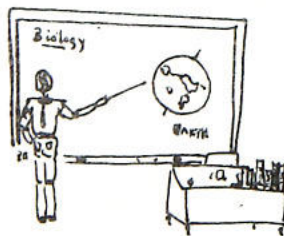
Scientific Creationism is the view that, as the Bible suggests, God created the various life species, (not more than 10,000 years ago), and that the species did not evolve from one another. Scientific Creationism should be taught in the public schools for the following reasons:

First, evolution is simply a hypothesis, not a fact. Students are entitled to exposure to alternative hypotheses.

Second, evolution is contradictory to the Second Law of Thermodynamics, according to which the energy available for work declines as useful energy is converted into heat. The Law says that orderly and complex systems tend to become less orderly and simpler. But the hypothesis of evolution presupposes a tendency toward greater complexity.

Third, new species are known to have appeared suddenly and evolutionists have created "missing links" to fill in their gaps. The so-called "missing links" will stay missing because they weren't there in the

Opinions expressed in Pro and Con do not necessarily represent the beliefs of those contributing, since contributors are asked by the MONARCH to take stands on certain issues.



first place.

Fourth, it is unfair for the government to tax citizens and force them to support schools which advocate atheistic doctrines which in their own turn, undermine morality. It is a known fact that sexual morality has declined as evolution has become accepted in the schools. Taxpayers have the right to demand that public schools at least give students a nonatheistic alternative to evolution.

**Bernard S. Parker,**  
Chairman of Philosophy  
& Theology



I am opposed to school boards requiring that the theory of creationism be taught in our schools. My opposition is on two levels;

A In general, I don't believe publicly elected bodies (like school boards or State Legislatures) should try to legislate curriculum content. Would it make sense for example, for the school board to require that both Newtonian and Einsteinian theories of motion be taught?

This is the province of the competent specialist and it should be the instructors professional judgement that should prevail.

B In particular, I don't see how creationism can in any way claim to be a scientific theory. One essential characteristic of a scientific theory is that it be capable of being falsified. Observable conditions must be stated such that if they do not prevail then the theory is false.

The proponents of creationism cannot meet this criteria. Creationism may well be a viable

philosophical alternative to evolutionism and perhaps should be presented as such within our schools; but not however in a biology class or presented as a scientific theory. The whole discussion today is muddled because most people associate creationism with a religious teaching just as they claim evolutionism is atheistic and anti-religious. Both assumptions are misconceived I believe since creationism is not merely a religious hypothesis and evolutionism is not necessarily atheistic or anti-religious.

Another common argument presented against evolution is that evolution cannot be proven and consequently this is indicative of the falsity of the theory. Such an argument falls victim to a basic fallacy in logic-namely the fallacy of ignorance which states that just because an opponent cannot prove his case in no way makes the position of the opposition any stronger. No one really proposes that evolution has been proven anyway and that is why it is referred to as a theory.

# Entertainment

## “The Oresteia” Held Together By Five



By Theresa Schretzmann

“The Oresteia”, a trilogy by Aeschylus, performed by the Saint Leo Theatre Department under the direction of David A. Golden, was held together by five effective actors and actresses, namely Catherine Stanberry, Michael McCarty, Edward Corbett, Rosemary Cash, and Ken Fischman.

In the first of the three trilogies, Ms. Stanberry, (as Clytaemestra) was believable in her characterization as the wife and murderess of Agamemnon, (played by Michael McCarty). Mr McCarty himself was effective in bringing across the portrayal as a king of Mycenae, who was the leader of the Greeks in the Trojan War, as well as the faithless husband of Clytaemestra. Receiving honorable mentions for their portrayals of Cassandra and Aegisthus, are respectively, Pamela Scheussler and George Levins. If Ms. Scheussler had concentrated on getting a little more genuine emotion into her hysterical raving's, she would have been much more effective as the prophetess fated never to be believed. Mr. Levins would have been dynamic in his portrayal as the lover of the married Clytemnestra, if he had been less stilted in his movements and speech patterns. Bruce Resnik (who played the watchman in the first act) needs to practice his pronunciation, as his lines in the opening scene were completely incomprehensible. Jerry Rocker (the herald) and the chorus,

consisting of Danielle Taylor, Jennifer Lyons, Claire McGough, Ellen Wahl, Steve Gallagher, Ken Fischman, Donald Peterson, and Anna Gimenez, were mediocre.

In the second of the three trilogies, the saving grace was Edward Corbett. Mr. Corbett managed to play the avenging son of Agamemnon and Clytemnestra, who with his sister Electra, (cindy Karekos) kills his mother and her lover. Mr. Corbett's ability to act out his character convincingly was refreshing. Ms. Karekos portrayal as the sister of Orestes who aids him in killing their mother, Clytemnestra, to avenge their murdered father Agamemnon, was passable. Ms. Karekos would have been more effective if she had concentrated on her facial expressions less and her movements more, so that both would have appeared natural in the character portrayal of Electra. Donald Peterson, as Pylades, the friend of Orestes, would have been more realistic if he had stayed at the side of Mr. Corbett, instead of appearing to tag along behind him continually. Friends walk beside one, not behind one. Wendy LeDoux deserves commendation on her depiction of Celissa, the nurse of Orestes. Her acting added a touch of tragical humor and she was very believable in her likeness as the nurse who raised Orestes. Mr. Steve Gallagher, as the follower of Aegisthus was average in

his ability to act out his character. The chorus of serving women, friends of Electra, played by Danielle Taylor, Jennifer Lyons, Claire McGough, Ellen Wahl, and Anna Gimenez, didn't quite know what to do with their bodies; (i.e., gestures seemed nonexistent.)

In the third act of “The Oresteia”, Rosemary Cash and Ken Fischman both managed to satisfactorily bring out the god-like characterization's of Athene and Apollo, by using dignity and mastery of voice. The Chorus of Eumenides (Furies) played by the same girls in act I and II finally came alive in the third act. Maybe it was the fact that all of them had their faces covered, that allowed them to really let loose and finally portray their character's with credence. They did a very good job as the “Furies”, with all their baiting, haggling, and arguing with Apollo (Ken Fischman).

The technical crew was very efficient in making sure that all stage maneuvers, music, set construction, costumes, lighting, and properties, were set up well, and run quite smoothly. That credit goes to Jacqueline A. Taylor, Liz Pasha, Scot Radloff, Ed Corbett, Kathy Neumeyer, Kim Kirk, Stagecraft Class, Wendy, Lecoux, Rose Shaikofsky, Scott Peters, John Bridwell, George Levins, and Bruce Resnik.

**CAFE Commentary**  
By Patricia Cahill

Renado's Bar, on U.S. Fifty-four, has excellent Mexican food and is open from eleven to nine-thirty on weekdays, and till two in the morning on weekends.

The atmosphere is decorated with a Mexican cultural decor. Velvet paintings of Mexican bandits, authentic Mexican hats, and even a Columbian kilo bag, decorate the walls.

The menu has everything from enchiladas, too taco's and is very affordable. To reach Renado's take forty-one south, to fifty-four, (on the right side of 41). Drive five miles and it is the third bar on the left.

On a rating scale of 1 to 10, Renado's is an eight.

**Greek Corner**  
By Michelle Dodds

Why join a Greek organization? Why not? According to Dawn Doremus, a sorority is a good way to get involved and feel like you're a part of a family. But she is not in one, because, she does not have the time to pledge and thinks that the hazing they go through is a hassle and often times, dangerous. A sister of Alpha Sigma, Jana Nanes, joined her sorority because of its unity. She likes the idea of always having someone there that you can rely on. She also like participating in the service projects with her fellow sisters. George Gano, a second semester freshman, does not like the system of fraternities on the campus. He feels that they so not do enough service projects and puts too much emphasis on the social life. He does not like the idea of pledging to gain a group of friends. But sophomore Al Winsser, who you can see dressed in top hat and cane, feel that joining a fraternity is a good way to get involved. He is pledging Sigma Beta and wants to be a part of what he considers the best organization on campus. He likes the group and is looking forward to the social life, participation in intramural sports, and the close relationships among the brothers. So now you've heard both sides. What do you think?

## Fall Concert At Saint Leo To Include Music From The Renaissance Period To Popular

By Joy Shepard

The Saint Leo College Choir, Stage Band and Wind Quintet will all be performing at the Fall Concert scheduled for November 8 at 2 p.m. in Selby Auditorium. The concert is open to the public and admission is free.

The College Choir, under the direction of Dr. Larry Sledge, Associate Professor of Music, will perform two works from the Renaissance Period, specifically “For Music” by Frederic and “Oh Praise The Lord” by Scarlatta. A traditional piece entitled “Swing Low, Sweet Chariot” arranged by Livingston is included, along with an early American piece entitled “An

Anthem for Thanksgiving” by Billings, a 20th century collection by Daniel Heiliden entitled “Three Choral Pastiches” and numerous popular works such as “Don't Cry Out Loud”, “Lady”, “Dream Away”, “Copacabana”, “What I Did For Love”, and “The Rainbow Connection”.

The Stage Band, directed by John Higgins, Associate Professor Of Music, will be performing such contemporary works as “McArthur Park”, while the Wind Quintet, also directed by Higgins, will be performing Bach's “Classical Suite” and Partita” by Jean Berger.

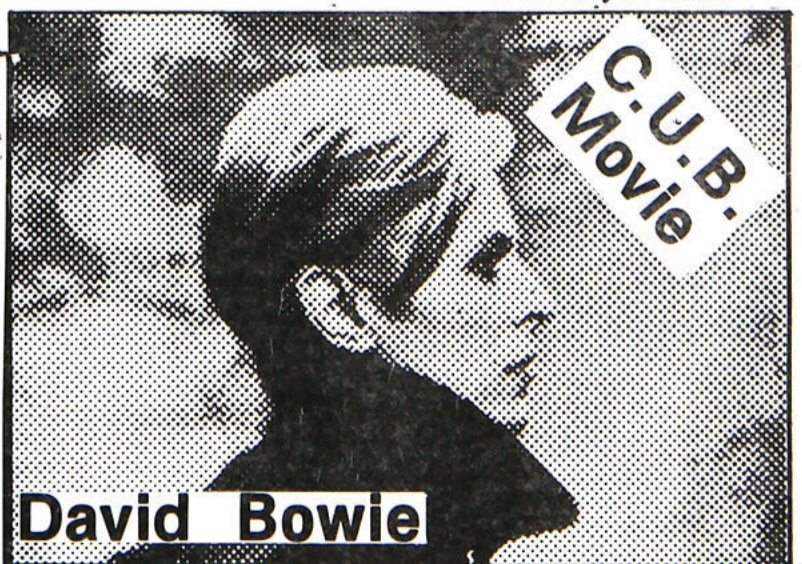
### Beer Can Boulevard

The coolness of night touches new day in a white laced web of delicate design - an intricate tapestry woven through phantom figures among misty memories across asphalt dreams through beer can thoughts into the groves of pulp, treading tenderly on the glass of the bottled fruit of the vine in the smokey valley of acapulco gold while merchants search for more reasons to enhance the devastation.  
brother bernard osb

“Maybe it will go away.”

The five most dangerous words in the English language.

American Cancer Society



David Bowie

**The man who fell to Earth**

**Tuesday Night, November 7, 9:00 p.m.**

**Ronita Flower Shop**

Specialists In  
Weddings  
Decorations  
Funeral Designs

Mrs. Jewell Hattaway

**567-6795** 430 N. Seventh St.  
Pade City, Fla.

## Personalities On Campus



### Student Profile:

## Bob Roper

By Mary Nahas  
Monarch Reporter

There are many active students who live off campus, and one of them is Bob Roper. Bob is a senior and is majoring in Criminology; he is from Belmar, New Jersey. As a Freshman, Bob joined the basketball team and up to this day, he is still a member. In his junior year, Bob became a member of C.U.B., a brother of Phi Theta Chi fraternity, and worked as a D.J. for Ronnies and for the freshman dances.

Bob is the only senior on the basketball team, and this year he was elected as Vice-President of C.U.B. He is still the D.J. at Ronnies and was our D.J. on S.G.A. Day.

Bob is the type of student who tries hard and never gives up. "Saint Leo

teachers are willing to help you if you show an interest in the school work. Don't worry about peer pressure; do what you think is right for yourself," he says.

When asked how the administration has helped him so far, he answered, "President Southard, Dr. Ackerman, Terry Danner and Sister Mary Clare have given me more than a chance to acquire a college degree."

As a member of the basketball team, Bob feels that Gary Richert is helping each individual in the team. "Gary has shown me that everybody has an equal chance to make it," he adds. His last advice, "Pace yourself and don't be too over-active until you're academically secure."

## Discovery and Awareness



By Joe Morley and  
Sherry Palamara

Brotherhood is like a best friend, and like a best friend, has faith, hope, and love. The greatest of these is love.

Faith is believing is something we cannot mentally grasp. If we believe strongly enough in doing something we have never tried before and succeed, faith is present at that time.

If we can believe, then our faith is given a chance to prove itself. The same holds true with brotherhood because we need to make the initial step in a relationship with another individual. If we believe strongly enough in that relationship, it will succeed, because we have the faith. Our relationship with God is similar because humans generally search for the unknowing, to try to seek the truth, (no matter what that truth may be).

In seeking God, we need to make the initial step, and have the faith that it will mature and develop, into a personal brotherhood-relationship.

How can we feel close to God if we cannot see him? The answer is faith. For God loves everyone and what he says holds true, because his word is infallible, and he is God. Usually we are the ones who are fallable, and turn away from God, but God is always there to love us. We may not notice God's love at first because we have not discovered his love through Jesus Christ his son. We become aware of his love through other people. The love of God is there; we need only to find it.

It may seem that relationships do ask a lot between people, but a good relationship will never get tired of giving. It does not get old or die out. Our relationship with God needs to

### Brotherhood

be strong and unceasing, in order for us to continue with Christ. He has given so much to us and in return we need to give back to him. Example of this are works of charity to our college community, by serving our fellow brothers and sisters in Christ.

On the other hand, if something negative happens between those in a relationship, a true relationship will bring dissent out in the open, thus gaining a better understanding towards the relationship. God does not put you at the bottom of the list if you leave him and then return to him.

True relationships do not put themselves before others and/or God. They give up having satisfaction for themselves just for another's needs, and the love for that person. God did this by giving us his only son so that whoever believes in him in him shall not perish, but shall have everlasting life.

Love is something that cannot be experienced by words alone, because love is "always patient and kind, it is never jealous; love is never boastful or conceited, it is never rude or selfish; it does not take offense, and is not resentful, love takes no pleasure in other peoples sin's but delights in the truth; it is always ready to excuse, to trust, to hope, and to endure, whatever comes." (6 Cor., 13:4-7).

We need to put love into practice by developing relationships with people and God. God gives us love to distribute to others day after day. God gives us the understanding of love not only for us to know, but also to receive, and to experience....

## Sigma Phi Epsilon: Setting New Goals

By Timothy King  
Corresponding Secretary,  
Sigma Phi Epsilon

Last year the brothers of Sigma Phi Epsilon had a set of goals to achieve before the end of the year. The biggest of these was to be installed as the first National Fraternity on the Saint Leo College campus. This goal was made a reality on March 28, 1981.

This year the brothers of Sig-Ep have once again set some high standards and goals that they will work to achieve in the near future. Among these are, becoming an even stronger force on Saint Leo campus, more charity work, getting into most, if not all, activities Saint Leo has to offer, and finally working to become the biggest and strongest fraternity

on campus.

Today Sigma Phi Epsilon is one of the leading National fraternities in the world. It is a growing, dynamic, organization, with its brothers distinguishing themselves through all types of interests and professions.

Sigma Phi Epsilon is comprised of more than 210 undergraduate chapters, and more than 129,000 brothers, both undergraduate and alumni.

With these goals and standards, and Sigma Phi Epsilon's rich background, the brothers here at Saint Leo must work hard and be dedicated to reach these new goals

## Pre-Law Society Debates Issue of Camera's In Courtroom




The second of a biweekly designed debate series, was held on October 29, by the Pre-Law Society. The topic for this debate was: Should television cameras be permitted in the courtrooms?

The pro side speaker was John McCarron, with his partner being Karen Bradshaw, who gave the pro side rebuttal. The con side speaker was Chris Maggio, with his partner Robert Colinde, giving the con side rebuttal. The team of Maggio and Colinde managed to win the debate by its stronger presentation of the facts, stressing the rights of an individual to a fair trial. (A fair trial meaning the absence of camera's and other equipment that might

intimidate or distract witnesses.)

The next debate will be held on November 12, 1981, in Duncan Lounge. The topic of debate will be: Should the United States send more military aid to El Salvador or other countries in similar situations? Pro side will be led by Jim Lang and the con side led by Mary Ann DeMeo. President Southard, as well as Dr. James Horgan, Chairman of the Social Sciences Division, will be present as distinguished guests. A surprise guest speaker from the University of South Florida, who is an expert on this topic to be debated, will also present a talk.

The debate will be held in Duncan Lounge at 7:30 P.M.

1 PAIR "BUGS" TICKETS FOR  
DEC 6th GAME TO OVERALL MALE WINNER

1 PAIR "BUGS" TICKETS FOR  
DEC 6th GAME TO OVERALL FEMALE WINNER

**1ST ANNUAL ROTC GOLD BAR RACE**  
(FORMERLY 3M CLASSIC)  
0945AM SUNDAY, DECEMBER 6, 1981  
SAINT LEO COLLEGE  
SAINT LEO FLORIDA 33574

GOLD BAR RACE COURSE	DIVISIONS	
	MALE	FEMALE
AN ACCURATELY MEASURED FAST 10K LOOP OVER PAVED ROADS WITH TWO MAJOR HILLS THROUGH THE BEAUTIFUL TOWN OF SAN ANTONIO AND SAINT LEO COLLEGE CAMPUS. MIDPOINT WATER STATION ON COURSE. MEDICAL SERVICES AND RESCUE SQUAD AVAILABLE SPLIT TIMES PROVIDED EACH MILE MARK. CAMPUS IS LOCATED 6 MILES EAST OF I-75 AND 6 MILES WEST OF US 301 (DADE CITY) ON STATE ROAD 52. (ONLY 30 MILES NORTH OF TAMPA)	13 & UNDER	14 & UNDER
	14 - 17 35 - 39	15 - 19
	18 - 20 40 - 44	20 - 29
	21 - 24 45 - 49	30 - 39
	25 - 29 50 - 59	40 - 49
	30 - 34 60 & OVER	50 & OVER

TEAM DIVISIONS - (5 RUNNERS)  
COLLEGES, HIGH SCHOOLS, ROTC

**AWARDS**

TROPHIES WILL BE AWARDED TO THE TOP 3 OVERALL FINISHERS OF THE MALE AND FEMALE DIVISIONS AND TO THE TOP 5 FINISHERS OF EACH AGE GROUP - BOTH MALE AND FEMALE. TROPHIES WILL ALSO BE AWARDED TO THE TOP THREE TEAMS IN EACH DIVISION. GOLD BAR RACE T-SHIRTS WILL BE AWARDED TO THE FIRST 250 FINISHERS.

**CROSS COUNTRY FUN RUN**

A TWO-MILE FUN RUN AROUND THE CAMPUS OF SAINT LEO COLLEGE. T-SHIRTS WILL ALSO BE PRESENTED TO THOSE RUNNERS WHO COMPLETE THE RUN. FUN RUN BEGINS AT 0900AM.

**ENTRY**

GOLD BAR RACE PRE-REGISTRATION FEES ARE \$5.00 AND MAY BE MAILED OR PRESENTED IN PERSON IN ROOM 115, LEWIS HALL, SAINT LEO COLLEGE TOGETHER WITH COMPLETED ENTRY FORM (ATTACHED). THE FEE FOR THE FUN RUN IS \$3.00 AND \$2.00 FOR EACH ADDITIONAL FAMILY MEMBER. REGISTRATION ON THE ACTUAL DAY OF THE RACE WILL BE \$6.00 FOR THE GOLD BAR RACE AND \$4.00 FOR THE FUN RUN (FIRST FAMILY MEMBER). NOTE - INDIVIDUAL REGISTRATION FEES ALSO APPLY TO TEAM COMPETITORS.

PARKING AND SHOWERS AVAILABLE  
REFRESHMENTS WILL BE SERVED

SPONSORED BY SAINT LEO COLLEGE ATHLETIC DEPARTMENT, ROTC, AND HARDEE'S INC.  
PROCEEDS GO TO SAN ANTONIO BOY'S VILLAGE AND SAINT LEO COLLEGE CROSS COUNTRY TEAM

.....DETACH AND RETURN.....

SAINT LEO COLLEGE GOLD BAR RACE

ALL MAIL ENTRIES TO:

MEET DIRECTOR  
GOLD BAR RACE  
P.O. BOX 2126  
SAINT LEO, FL 33574

MAKE CHECKS PAYABLE TO:  
"GOLD BAR RACE"

INFORMATION:  
TAMPA - (813) 229-2137 EXT. 256  
SAINT LEO - (904) 588-8256

**PRIVACY ACT STATEMENT:** Under the authority of Title 10, USC 2101-2111, your name, sex, and age are necessary in order to assign you to the proper running class. Your address and phone number are needed in order to notify winners of results and awards. Information will also be used for publicity purposes. Completion of this form is voluntary. Failure to complete this form will preclude participation in the race. This form will be used for race purposes only and will be destroyed upon completion of race and all related publicity.

In consideration of your accepting this entry, I, the undersigned, intending to be legally bound, hereby, for myself, waive and release any and all rights and claims for damages I may have against any and all sponsors of this race (Army ROTC) and for any and all injuries suffered by me in said event. I attest and verify that I am physically fit and have sufficiently trained for the completion of this event and my condition has been verified by a Licensed Medical Doctor. Further, I hereby grant full permission to any and all of the foregoing to use any photographs, videotapes, motion pictures, recordings, or any other record of this event for any legitimate purpose.

NAME \_\_\_\_\_

ADDRESS \_\_\_\_\_ APT. NO. \_\_\_\_\_

CITY \_\_\_\_\_ STATE \_\_\_\_\_ ZIP \_\_\_\_\_

PHONE \_\_\_\_\_ AGE \_\_\_\_\_ SEX \_\_\_\_\_

Shirt Sizes:  Small  Medium  Large  XLarge

SIGNATURE \_\_\_\_\_

PARENT'S SIGNATURE IF UNDER 18 YEARS \_\_\_\_\_



Women's Volleyball Team Coach. Paula Smith



Phillip Davis, Assistant Volleyball Coach

## Eight Wins Seven Losses A First In History For Women's Volleyball

By Edward Mansoor  
Monarch Sports Writer

The 1981 Saint Leo College Women's Volleyball season came to an end last week after 15 encounters. The team finished with a record of 8 wins to losses, the first time in the history of Saint Leo Volleyball. "I think we would have done better still, if only we had begun practicing earlier," commented Coach Paula Smith. The team only had one week of practice prior to the start of the season.

The team, captained by Janer Hansen and Margaret Laysner, didn't start too well early in the season. In the first nine matches, they only managed two victories. The last six were all turnover's, however, and the women emerged victorious in all of them. Here's a brief summary of the last five encounter's.

The first victory was over Clearwater Christian College, Earlier in the season, C.C.C. had defeated Saint Leo three games to one. The Monarchs needed to settle their account. The game score was two all and "they were under a lot of pressure." Perseverance and determination resulted in an outcome in their favor.

The Monarchs were presented with the same atmosphere on Friday the 23rd when they challenged South Eastern College for the second time this season. Earlier this month, South Eastern had also defeated Saint Leo, but the Monarchs retaliated unmercifully.

The action began early in the first game and the Monarch's kept their cool as they tried to overcome the opposition's offense. It was a close game. At fourteen all, Amy Dion got the serve and gained the one point needed. The Monarch's anxiety was cut short when the South Eastern coach called an extra time out, (his third.)

The Monarchs got off to a good start in the second game and at one point they were leading 8-0. One might have thought that victory was inevitable. Unfortunately, South Eastern came back into the game and won 15 to 13.

In the 3rd game, South Eastern got some of their own medicine, when after a score of 11 to 6, in their favor, Saint Leo's Yoko Keitzumi, guided the team to victory by gaining 9 consecutive points.

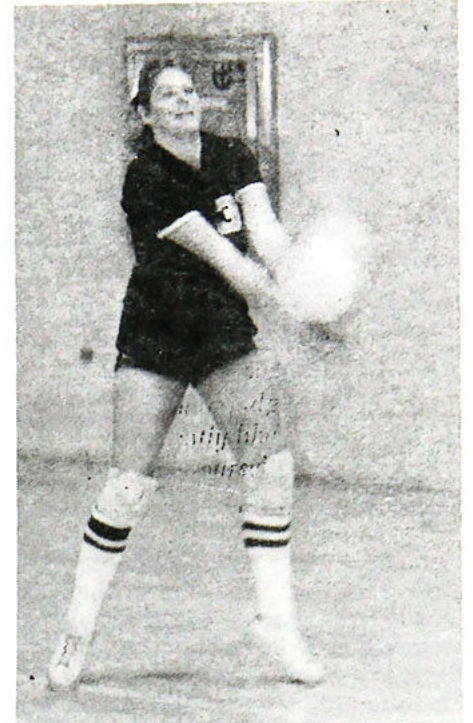
Florida Institute of Technology, in the same evening, got their second beating for the season, from the

Monarchs. It was only 8 minutes after the start when the score was 15 to 5 in favor of the Monarchs. The second game was quite a turnover. F.I.T. got the early lead and reached 14 when the Monarchs had only 5 points. Although the ladies managed to reach 11, they couldn't keep up. Two quick mistakes led F.I.T. to win that game. The third and last game was almost a replica of the first. The Monarchs returned with fierce play and a quick 10 points after a score of 5 all, sent them home undefeated.

The following two matches were completely in control by the Monarchs. Landmark College failed to score in the first game and only gained three and four points, in the first and second games, respectively.

The final match with Webber College saw the ladies at their best. After Amy Dion, Carla Fantozzi, Sue Loyzelle, Jean McKintosh, and Yoko Keitzumi had aided in the first two games, the seniors Ann Crowley, Janer Hansen, Margaret Laysner, Marie Forgette, Cathy Utnik, and Rose Reese, closed the season with an unforgettable victory.

Commenting on the success of this year's team, Coach Paula Smith said, "I think that one of the keys to



JANER HANSEN, Senior Captain for women's volleyball team, returns an offensive play.

our success was team work. Continued spirit and morale were of utter importance. Everyone contributed to the success of the team in their own way."

The contribution to the team by Assistant Coach Phillip Davis was praised by Coach Smith. In an interview she said, "He was a definite asset to the team. He was very professional and, in short, he has done an excellent job."

And so, what started out as an immature beginning for the volleyball team, turned out to be a successful end. The team will be faced with the challenge next year, to not only equal, but surpass this year's success.



## Young Basketball Team Has Great Expectations

By Tresea Berry  
Monarch Sports Editor

Coach Richert promised us last year that he would bring us a new basketball team, and by golly he has started to do just that! He has recruited four new players; three of them freshman, and the other one a junior. Now let's meet them.

The first new player is Scott Talcher, a six foot six, nineteen year old freshman. His major is Management. He has been playing organized basketball since he was eight years old and he enjoys it as time goes on. Scott lives in Kokomo, Indiana where he attended Kokomo High School. He averaged 14.5 points and six rebounds a game. During high school he scored a court high of five hundred seventy-eight points. He came to Saint Leo to play small forward, but he is very optimistic about the team. As he was interviewed, Scott commented, "The players are nice and we all get along as a team." Scott has won several awards such as, All Conference and All State.

The next player to be introduced is Dennis Perri, a six foot six, junior. He transferred from Mitchell College, New London, Connecticut, where he played center. While in college he averaged 16.5 points and fourteen rebounds a game. He was listed in the five hundred ball club and he received the honors of All New England. Dennis lives in Durban Connecticut where he attended Coghinchaud High School. He scored a career high of eight hundred seventy-five points and nine hundred twenty-six rebounds. His team went to the states and went two hundred sixty his senior year. Dennis remarked, "We should have a good team because we've got everything. It's going to be a big

surprise when they see us play. We have no outstanding individual, but we all play as a team and we should win." While in high school, Dennis received the honor of All State.

The third player is Timothy Lovett, a six foot five, nineteen year old freshman. His major is Management. Tim has been playing organized ball for only three years, but he enjoys it as is evidenced by his enthusiasm for basketball. Tim lives in Plant City where he attended Plant City Senior High School. He averaged sixteen points and eleven rebounds a game. In his senior year Tim's team was District Champion, and Tim received the honors of First Team All Conference. Tim said at the interview that, "Everyone is so nice and I think the team will go far because we all get along fine."

The last player is Rodney Murry, a nineteen year old freshman from New York City. His major is also Business. Rodney has been playing organized ball since he was seven year old. He attended Powell Memorial Academy where he scored eighty-three points and seventeen rebounds. Rodney is not a scorer he is the point guard that runs the team and makes sure all the plays are going just right. He averages six points and many, many assists per game. During high school Rodney lead his team in assists. Rodney commented, "We're going to be a good team because everyone is closely knitted."

As we can see, Coach Richert has brought in more talent. The young men all have a very confident opinion on how well the team is going to perform. Most important, all these young men here played on winning teams and they all know what it takes to make a team a winner

### Sports Shorts

By Tresea Berry  
Monarch Sports Editor

Men's and Women's intermural Volleyball will be starting this week. The exact date will be in the Say-So.

Men's Flag Football Championship, Monday, November ninth in the bowl

Women's Softball Championship, Tuesday, November tenth, in the bowl

Intramural Co-ed bowling every Wednesday night at 8:00 P.M.

Men's Racquetball Finals, November Sixth through the ninth.

Tuesday, November 17th there will be an Intersquad basketball game between the girls at 6:00 p.m. At 7:30 p.m. the men's basketball team

will be playing a Green and Gold intersquad game.

Women's Exhibition Tennis Match against Rollins on Saturday, November fourteen at 11:00 a.m.

Men's Florida Inter Collegiate Tennis Tournament will be held in Gainesville, November 20-22 at the University of Florida. Saint Leo College Tennis Team will be attending. This will feature all the big colleges in Florida.

Needed, a Basketball Manager for Girls Basketball. Anyone interested contact Gary Richert for Details.

Congratulations to the new Golf Coach, Mr. Ed Rodgers from Quail Hollow Village.

## CANDY STRIPER

2219 Hwy. 301 South — 567-6090  
Dade City, FL 33525  
Hours 10-5

### Jeans:

**Serigio Valente [Men & Ladies]...\$32.00**

**Jordace [Men & Ladies] \$34.00 sz. 26-36**

**Calvin Klein \$30.00 sz. 3-13**

**Gloria Vanderbilt \$36.00 sz. 26-36**

**Sasson \$32.00 sz. 27-32**

**Lee & Levi for Gals \$29.00 sz. 3-16**