



MONARCH

*"By the students,
for the community"*

Volume LXXVI, Issue 15

Thursday, April 4, 1991

Ruday to leave SLC

By William Quigley
Editor

Robert Ruday, the vice-president for student affairs for the last five years, announced at a student affairs staff meeting held Thurs., March 7, that he would be leaving Saint Leo College in June, at the end of the fiscal year.

Ruday's announcement was met with surprise, "I was shocked,"

said Ruday's secretary Tammy Wooten. Others at the meeting expressed similar responses to the announcements. Ruday felt that during his tenure at SLC he has been, "able to accomplish a lot" he went further to say, "because I have been able to accomplish much that I wanted to, in order for the student affairs to continue to grow, Student Affairs needs a change a leadership."

The job of the vice-president

for student affairs is to oversee the many varied departments that deal directly with students. Included under Ruday's control are residential life, financial aid, student development, the health center, career planning, food service liaison, admissions, etc.

The college has begun a search to replace Ruday, and they hope to have a new vice-president hired before Ruday leaves.

SLC trustee Cannon dies

By Thomas Turcotte
Monarch Staff Writer

Elizabeth Cannon a previous Trustee of Saint Leo College, passed away March 13, at the age of 71. Cannon was the widow of Daniel A. Cannon, who passed away in 1973. The Cannons had several prosperous ventures in San Antonio. Originally, they owned and operated a dairy ranch that had been in the Cannon family since the 1920's. After World War II, the dairy

business slowed drastically. The Cannons sold their dairy cattle, raised beef cattle and entered the citrus industry. In 1983, after Mr. Cannon's death, a freeze destroyed 300 acres of Cannon's citrus. The beef industry was slowing as well. Cannon sold the cattle and gave a great deal of land to a projected housing community called "Cannon Ranch." There are plans to build the residential area in the near future.

Cannon contributed a great deal

of finances, time, and effort to Saint Leo College and the community. She made a large contribution to the Daniel A. Cannon Library, which is named in honor of her husband. In 1985, Cannon aided the San Antonio Boys Village in constructing a new center for young offenders. On numerous occasions, Cannon volunteered her time to assist with college activities.

Please see Cannon p. 5

Inside

- Editorial.....4
- OnCampus.....5
- Leisure.....6
- Sports.....7

Editorial: Is the decision to move CCE and the bookstore fair to the students?

On Campus: Two plays to be directed by students in Short Takes II in the SLC theatre. Also, Pearson resigns to join the Air Force.

Leisure: Tampa radio station hiring students for part time positions. Also, closed circuit Channel 57 to begin at SLC.

Sports: Softball team performs a triple play for the first time in the programs history. Also, a calendar for the remaining school year.



Point To Ponder

If all mankind minus one were of one opinion, mankind would be no more justified in silencing that one person than he, if he had the power, would be justified in silencing mankind.

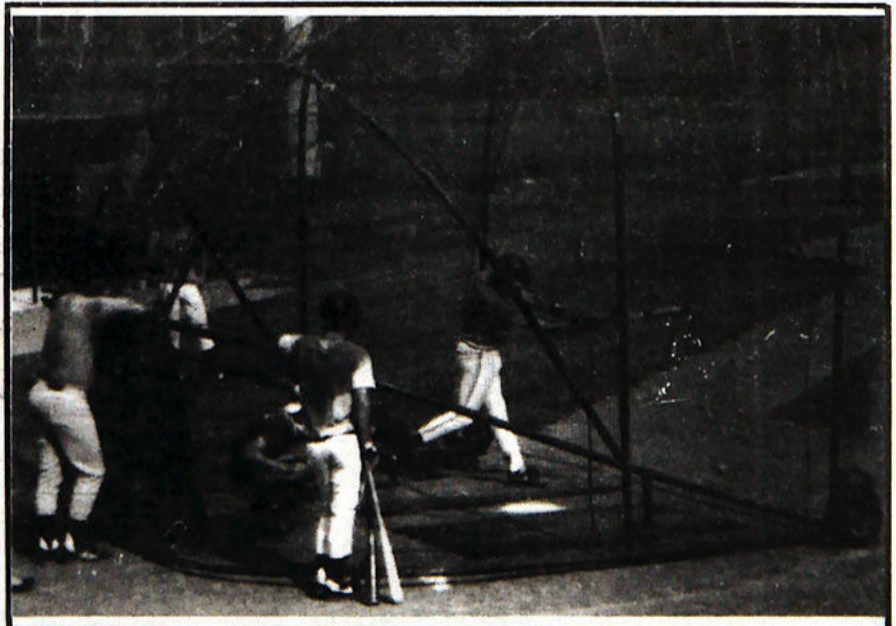
- John Stuart Mill

Careerdayheld

By Thomas Turcotte
Monarch Staff Writer

Career Day was held on Thursday, March 21st for all Saint Leo College students and alumni. Dixie Higgins who was the organizer stated that the purpose of Career Day was "to help students become acquainted with the work world." Higgins was relatively pleased with the outcome of Career Day. 24 companies/colleges/organizations showed up for the event with 33 representatives. The representatives covered virtually every major on campus. The groups represented were considerably

Please see Career p. 5



The Saint Leo College team takes batting practice in preparation for its next game. Monarch Photo File

CCE move decision is unfair

The story of Saint Leo College administration and its relationship with the students has been one of betrayal and unilateral decision making. Yet another example of this "who cares about the students" attitude, has been the proposed movement of the Center Continuing Education (CCE). This problem with this is that it was made without students being allowed to voice their opinion about a move that has far reaching implications. It is not so much that this move is so intolerable; it is the fact that students were not even consulted.

It is the responsibility of the administration to make changes out in the open, and with the students fully involved in those decisions. As usual, the administration thought it could

sneak past the students a decision that will change student life. They were wrong. It is time for students to stop this administrative practice. It is incumbent on the students of Saint Leo College to stand up and say enough is enough.

The reasons for opposing the move by the CCE are basic and overwhelmingly powerful. The CCE will displace the bookstore to the Cage located in the student center. This will deprive the students of the use of a large part of this center and its many activities. Also displaced will be the newly renovated SGA offices and Student Development office (which of this writing have no place to move to). These renovations for these offices that took place two years ago cost the stu-

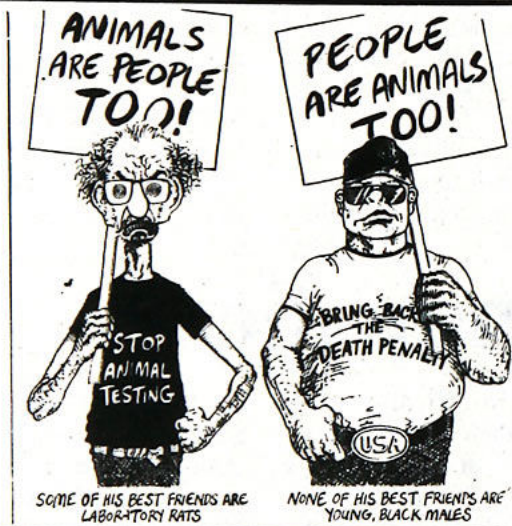
dents almost \$20,000.

The student center is for the students' use, and unilateral decision making by the administration does not have the right to take away this area. Additionally, the moving of all these offices is going to cost money. And more than likely, the money will come out of the students' pocket.

The reasons for the move by CCE have never been fully explained to the students, and the committee making the decisions on the move did not contain any students. The "alleged" reasons for the move was that CCE needs more space. Yet right next to their office is a class room that is not being used. Also, another reason given is that the CCE needs to be closer to its students.

Considering that how compact Saint Leo College is, it seems to be a very small hardship for a minority of students to be asked to walk a few more yards.

What this whole issue comes down to, is that student concerns are being subjugated by an administration who thinks they can get away with it. Its time to prove the administration wrong, and the only way this will come about is for students to let the administration know that we don't approve. Its our call Saint Leo, are we going to buckle under the pressure and reinforce the notion that students do not care? Its our choice, and by silence or by inaction we give in, and the administration will win once again.



MONARCH

1989-1990 ASPA First Place with Special Merit

1989-1990 CPA Second Place with Special Honors

1988-1989 ASPA First Place

William E. Quigley Editor
Timothy W. Moore Associate Editor

Copy Editor
Michelle R. Ronalder

Design Editor
Daniel Eckert

Photo Editor
David Childers

Office Manager
Pia Navarro

Advisor
Judith Rochelle

News Editor
Michelle Berens

Staff: **Michelle Berens, Kevin Kennedy, Lisa McColgan, Todd Trumpore, and Thomas Turcotte.**

All Letters to the Editor must be typed, double spaced, one side on a page and include the name, phone number, and the address of the author. Letters should not exceed 500 words. Unsigned letters will not be published, but names may be withheld upon request. We reserve the right to edit all letters. Letters will be chosen according to timeliness and space availability. Letters may be left in the Monarch mailbox located at the east end of Saint Francis Hall. The opinions expressed in letters are those of the author.

Full responsibility for the material that appears in this publication rest with the Editors and Editorial Board. Opinions expressed in columns or letters are not necessarily the views of the editors or of Saint Leo College. Editorials appearing in the Monarch are published with the express consent of a majority of the Editorial Board. All editors are eligible to submit editorials for approval. Minority editorials may be published with a by-line.

The Monarch is printed weekly throughout the academic year, except around and during College holidays. All correspondence with the Monarch should be addressed to: The Monarch P.O. Drawer I, Saint Leo, Florida 33574..



SLC theatre's Short Takes II

By Michelle R. Ronalder
Copy Editor

The Saint Leo College Theatre will be presenting *Short Takes II* the 17th through the 21st of April.

The focus of the evening will be the two student directed plays. Lisa McColgan and David Gilpin, both junior theater majors, will be setting their hand to directing rather than actual stage performance.

Lisa McColgan's play is "*The Bald Soprano*" by Eugene Ionesco. She says that it is essentially an absurdist play that explores communication and all its absurdities.

It takes place at the Smith's home in the suburbs of London; they have the Martins over for dinner and the action follows from there.

The cast consists of Jennifer Buckley, Martin Corrado, Scott Graham, Kevin Kennedy, Susan

Pearsall, and Hope Sune.

McColgan comments that directing her first play is "very exciting, yet nerve racking." She commented further that she has confidence in her cast; "I trust the actors. I cast them according to how comfortable I felt with them and how intelligent I thought they were. They should do well aided with their good sense of humor and creativity."

David Gilpin's play is titled

"*Out at Sea*" and is written by Slavomar Mrozek. It is about "three gentlemen contemplating, in an orderly fashion, which of them will be eaten."

Gilpin's cast is comprised of Suzanne Guillon, Kevin Kennedy, Aldo Prat, Michelle Rosen, and Ginger Sheehy.

Gilpin is also excited about directing his first show: "It's fantastic! It's a thrill. Everything I thought it would be and more!"

College RD Pearson resigns

By Michelle R. Ronalder
Copy Editor

Suzanne Pearson, resident director for Saint Edward hall, has resigned. She has joined the Air Force and will be sworn in on the 12th of this month. Following the ceremony, she will be headed to San Antonio, Tx. to attend Officer's Training School, which will start April 16.

She is excited and states that this will be a "neat opportunity" for her as she feels it is a "step in the right direction" for her career.

Pearson, a Dade City native,

began working at Saint Leo College in August 1986 in Freshman Studies. After that she was secretary for the Academic Support Office. She applied for the RD position when she heard that it was open.

Her farewell comments; "To the students of SLC, best of luck with whatever you do; to my staff, much appreciation. I'll miss you." Pearson also commented "it was real tough to leave. I owe alot of appreciation to alot of people."

Ken Rowan is acting as temporary RD for Saint Ed's until the position is filled.

They're also rude and, of course, listen to New Kids on the Block music so loudly that they can't hear meeker voices than their own.

These alien-administrators seem to be gaining control of the campus, causing financial difficulty and student discontent. The reason they have yet to be caught is that they cunningly put things into committees, which humans seem to have little understanding of, where they cloud or distort alien intentions.

The aliens are effective because they have studied us. They have viewed every episode of *Twin Peaks*, *Night Court*, and *David Letterman*, thereby knowing all there is to know about the human race. They play upon our weaknesses - our apathy, our desire for power, and our love of Spring Break.

The CIA thinks that when pizza is used by the aliens, the campus will be totally subjugated.

Said one student, "Who needs recreational space when we have pizza, dude?"

From Pods p. 1

have total control of Saint Leo College and to own every New Kids on the Block album ever produced.

The government is considering leaving the aliens alone.

Delusion's assistant, Biopsychologist and female hormone expert Tom Drone says these aliens are taking over key positions on campus by abducting humans and mimicking them.

"They are sort of like dopplegangers, or, if you prefer, Billy Crystals," stated Drone, "and the most frightening thing about them is that they enjoy being college administrators."

Drone says you can tell the aliens from humans by looking for certain characteristics that are flaws in their disguises. The alien-administrators have a tendency to be concerned with getting more space and trying to take other buildings under the pretense of convenience and workability.

From Cannon p. 3

Cannon was highly honored for her hard work and donations. Saint Leo College awarded her a honorary doctorate of law in 1987. The college also selected Cannon to receive the "Champion of Higher Independent Education in Florida"(CHIEF) award from the Independent Colleges and Universities of Florida in 1988. She was also a charter member of the San Antonio Garden Club.

Cannon is survived by 3 married daughters and 4 grandchildren. Diane Jones, a San Antonio city clerk, expressed her view of Cannon. "She was just a gracious, true southern lady, Always, kind, never an un-kind word against anyone."

From CCE p. 1

really showed em, now those rich-kids can find places off campus."

The move was heralded by the entire administration who stated the unused dorm space can now be renovated and each administrator can have his or her own floor. They responded to the news by throwing a, "kick the students in the dorm" party. One administrator who did not wish to be identified for fear someone would ask what he does stated, "this college would run so much better without all those damned students."

SLC students reacted in the same way that they have handled similar circumstances-they refused to go to classes and marched to the pool to lay-out. One Greek student leader, Appolo Jones, believed the move to be good, "Like now my parents are going to have to buy me my own pad, like way cool." Yet another female student stated, "It doesn't really matter to me, I usually sleep in whichever guys room will have me anyway." The only problem this student saw was having to now "apartment hop instead of dorm hop." One student leader, Bernard Gooch called the changes, "yet another

example of how the schools administration has taken away the students fundamental rights at this college." Gooch was thrown out of school a day later for having to high a GPA.

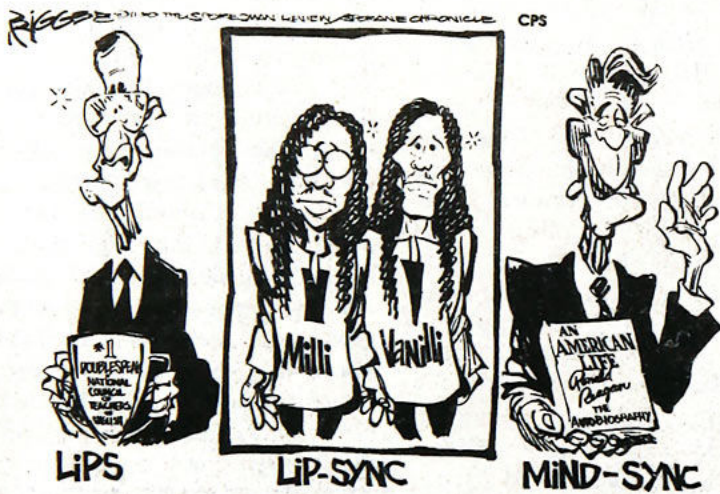
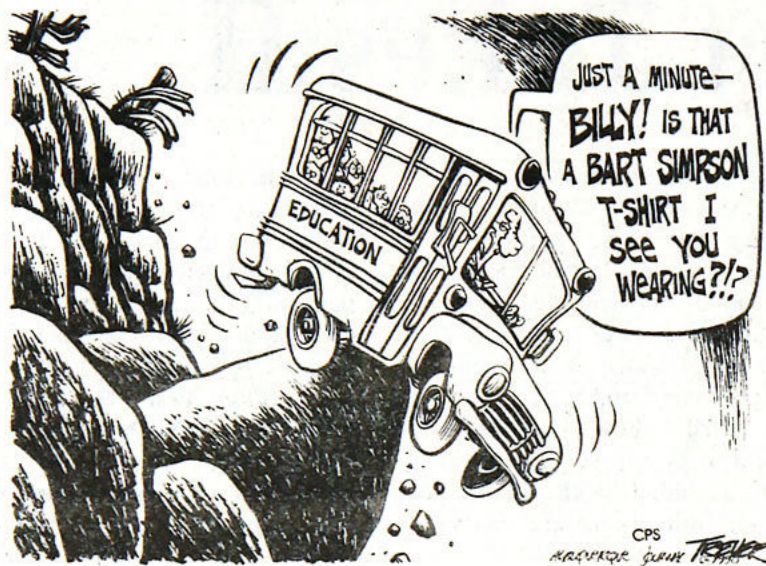
The college plans also include the planting of many more palm trees, the putting up of more direction signs, and white picket fences. Committees are now being formed that will make this decision agreeable to the students. All are encouraged to join and take any one of the following available positions; director of misinformation, coordinator of public lies, and most importantly the rubber stamp committee.

From Career p: 3

major on campus. The groups represented were considerably higher than last year. Those represented included the Pasco Sheriff's Department, Federal Bureau of Investigation, the Department of Justice, Radio Shack, and several others. More than 150 students attended and 42 interviews were held.

Higgins explained the preparation involved for such an event. The Southern College Placement Association and the College Placement Council are two organizations that assist colleges in the planning of Career Days. Lists of groups likely to attend in various regions are sent to the colleges. Higgins contacts these groups far in advance. She stated that company representatives can often plan a year or two in advance. It takes several months to plan such an event. Higgins thinks the event should be held earlier in the day next year.

She stated a central problem with this year's Career Day. Many of the companies complained that the student turnout was too low. Higgins agreed with the companies that students should become more involved in college events. Higgins expressed her thoughts on the problem. "Students have got to overcome their apathy if their college experiences are going to be meaningful."



Channel 57 to begin

By Michelle Berens
News Editor

Channel 57, a closed circuit television channel, which will be used as an electronic bulletin board, will start broadcasting in the fall semester with the logo of 'WSLC Channel 57, Saint Leo College.'

SLC was given six closed circuit channels when Florida Satellite Network wired the campus forceable. "This means that from a facility on campus, we can plug into that channel and broadcast something that will only go to the building on campus ..." states Judith Rochelle, director of publications. Channel 57 will be used for "... one specific purpose ..." which is an electronic bulletin board.

The set up for this electronic bulletin board uses a computer, a special keyboard and software which is hooked into two videotape decks. These videotape decks are connected to Channel 57.

When information is typed into the computer, the software writes

the information to a videotape (instead of disc line computers). Certain codes are entered into this program that direct the videotape to either stop the bulletin board and start a video, or start the bulletin board and stop the video. This process entails two videotape decks.

"You can set up the second tape (the one with the video on it) so it has several different pieces of video on there, and you can program the first tape to turn that one (the second tape) on and off ..." states Rochelle, "...and when it gets to the end of the program, it starts all over again." The tape will be programmed if necessary.

Several professional television producers and directors will pay a visit to SLC to teach people how to use the equipment. "Dr. Hudson Reynolds has a setup similar to this at his home ...so he's going to act as a kind of unofficial advisor," replies Rochelle.

Students interested in working with this equipment can sign up for Humanities 100 and select this as their project for the semester.

Tampa radio station hiring students

By Michelle Berens
News Editor

WBVM 90.5 FM, Tampa, has part time positions for students interested in broadcast marketing. This station reaches sections of 11 countries and has a 4,000 square mile span. WBVM is a non-commercial station with an income based on from listener support and underwriting.

As a member of the marketing team, one will acquire experience in copywriting, scheduling, and broadcast campaign development.

Several other openings are also available: announcer, sports reporter and play-by-play announcer, engineer, out of studio recording technicians, a classical

music librarian, and a control room board operator.

WBVM's training program, with hands on experience, is intended to teach an interested applicant how to successfully operate broadcast equipment. This equipment consists of an eighteen channel stereo console, microphones, cart machines, cassette decks, reel to reel tape recorders, and the operations of the broadcast transmitter. The experience received at WBVM may lead to other career opportunities.

For additional information, contact WBVM's General Manager, Thomas Derzypolski, the operations Director, Susan Thomas, or Mr. David Sharp, toll free at 1-800-223-9286.

ACROSS

- 1 Algonquian Indian
- 4 Rent
- 9 Spread for drying
- 12 Couple
- 13 Talk idly
- 14 Guido's second note
- 15 Roman bronze
- 16 Vest ages
- 17 Trick
- 18 Subject of discourse
- 20 As far as
- 21 Myself
- 23 Trouble
- 24 Pair
- 28 Unit of Siamese currency
- 30 Chokes
- 32 Platform
- 34 Scottish for "John"
- 35 Jumps
- 36 Stories
- 39 Tiny
- 40 Dark red
- 41 Health resort
- 43 Road: abbr.
- 44 Hebrew letter
- 45 Meager
- 47 Cupola
- 50 Prophet
- 51 Conjunction
- 54 Poem
- 55 Wherewithal
- 56 Electrified particle
- 57 Ship channel
- 58 Having dull finish
- 59 Golf mound

DOWN

- 2 Veneration
- 3 Expense
- 4 Hurries
- 5 Advancement
- 6 Path
- 1 Music: as written

The Weekly Crossword Puzzle

1	2	3	4	5	6	7	8	9	10	11
12			13					14		
15			16				17			
	18	19				20				
21	22	23				24		25	26	27
28		29	30	31						
32		33		34			35			
36			37			38		39		
40					41		42		43	
		44		45			46			
47	48	49		50				51	52	53
54			55					56		
57			58					59		

COLLEGE PRESS SERVICE

E	T	E	M	A	T	E	G	A	T	I	V
N	O	N	S	I	O	N	D	E	M	A	N
O	H	M	S	E	R	S	E	R	W	O	D
W	H	O	S	E	R	S	E	R	W	O	D
C	A	N	T	P	E	S	C	A	N	T	P
R	D	S	P	A	N	O	O	N	M	A	R
W	E	S	O	T	E	S	O	T	E	S	W
S	H	O	P	S	I	N	V	I	S	I	D
S	L	E	S	T	R	A	N	G	L	E	S
M	E	A	D	O	C	O	P	L	E	M	E
O	T	H	E	M	E	T	O	T	H	E	M
E	S	E	N	S	E	O	N	S	E	S	E
R	U	S	E	R	U	S	E	R	U	S	E
A	R	E	P	R	A	T	E	A	R	E	P
T	E	D	S	P	L	I	T	T	E	D	S

Puzzle Solution

Lady Monarchs get triple play

By Tom Duffy
Special to the Monarch

In the world of sports, there are certain events that stand out beyond all others. The hole-in-one, the 100 yard run-back, the in-the-park homerun. The players combine skill, talent and a little luck to achieve amazing results.

Recently the Lady Monarchs

softball team achieved this high pinnacle. The third inning looked a little gloomy for the Lady Monarchs. It was then that the amazing happened, the batter was up with two balls to no strikes and pulled a line drive at the feet of the third base person Julie Mulder. Mulder made the shoestring catch look easy, then flipped the ball to Kim Lietner at second base. Lietner finished the

play with a throw to Gerald at first base. It all happened so fast, all the players paused for a moment before they realized what happened.

The Monarchs had achieved the elusive and almost mysterious triple play. It was the first in the programs history. When asked about it, third base person Julie Mulder said "I was shocked, I had seen one on T.V. but never

thought we could turn a triple." The play helped boost the Monarchs to a win.

Currently, the Monarchs are enjoying a seven game winning streak, upping their overall record to sixteen and twelve. With plays like this, the conference underdogs just might snatch a conference championship from number one ranked Florida Southern.

April calendar of college events

Thursday, April 4

Honors Lecture Series at 7:30 p.m. in the Duncan Lounge. Seven senior honors students will give their presentations on topics such as art, biology and literature. All are encouraged to come. Call Dr. Mark Newton at 588-8494 for further information.

Friday, April 5

Womens Softball vs. FIT in Melbourne at 2:45 p.m.
ROTC Military Ball at 6 p.m. in the St. Petersburg Hilton. Hosted by SLC, USF, Eckerd College, and St. Petersburg Junior College. All ROTC and their guests are invited. Call Sgt. Gensler at 588-8390 for details.

Saturday, April 6

Mens Varsity Baseball vs. University of Tampa in Tampa at 3 p.m.
Lakeside BBQ from 11 a.m.- 4 p.m. and Banquet at 8 p.m. in the McDonald Center. Both events are sponsored by Sigma Phi Epsilon in honor of their 10th Anniversary at SLC. Call Quinn at 588-8867.

Sunday, April 7

Saint Leo College Salutes Pasco County Little League at 1 p.m. when the Saint Leo College Monarchs play the University of Tampa Spartans. Televised on the Sunshine Network. Free hot dogs, soft drinks, popcorn, and special game souvenirs. Call 588-8253 for details.

Womens Softball vs. Barry University in Miami Shores at 1 p.m.

Tuesday, April 9

Mens Varsity Baseball vs. Rollins College at 7 p.m.

Employment Awareness Seminar to educate area employers in the hiring of people with disabilities from noon-4 p.m. in the Lion's Lounge. Employer sensitivity training for employers hiring people with disabilities. Preliminary event for the upcoming Job Fair October 8 co-sponsored by the Human Resources Office (Kathy Bell, Director: 588-8293) and the Private Industry Council (Harriett Chambers: 567-2260).

Campus Ministry meeting at 7 p.m. in the Lion's Lounge.
Saint Leo College Ambassadors formal dinner at 7:30 p.m. in the Duncan Lounge.

Saint Leo College Salutes its Faculty and Staff at 6 p.m. when the Monarchs play Rollins College in a Sunshine State Conference game.

Game time is 7 p.m., preceded by a spaghetti picnic in the park provided by Marriott. Cost is \$2 per adult and \$1 for children under 12.

Wednesday, April 10

Mens Varsity Baseball vs. Rollins College in Winter Park, FL at 3:30
Dade City Christian Women's Club Brunch at 9:30 a.m. McDonald Center.

"Three Men and a Little Lady" shown in The Cage. Sponsored by the College Union Board: 588-8358.

Thursday, April 11 062

Division of Business Reception at 3 p.m. in the Duncan Lounge. John C. Reynolds will speak on "Management Controls and

Leadership' at 2 p.m. in Selby Auditorium. All are invited. Call 588-8309 for details.

Friday, April 12

Womens Softball vs. Florida Southern at 2:45 p.m.

Students Government Association Banquet and Awards Ceremony in the McDonald Center. Dinner will be served by faculty and staff.

Sponsored by Student Affairs: 588-8992.

Saturday, April 13

Mens Varsity Baseball vs. FIT in Melbourne, FL at 3 p.m.

Mens JV Baseball vs. Pasco North - doubleheader at 1 p.m.

CUB Day in the College bowl.

Sunday, April 14

Mens Varsity Baseball vs. FIT at 1 p.m.

Handel's "Messiah" performed by the Saint Leo College Oratorio Society at 2:30 p.m. in the Marion Bowman Activities Center. General admission \$10, Senior Citizens \$7.50, Students \$3. (SLC personnel \$5)

Tuesday, April 16

Mens Varsity Baseball vs. Barry University in Miami Shores, FL at 4 p.m.

Womens Softball vs. University of Tampa at 2:45 p.m.

Campus Ministry - installation of officers and end of the year pool party at 7 p.m. 588-8331

Wednesday, April 17

Mens Varsity Baseball vs. Barry University in Miami Shores, FL at 2 p.m.

"Short Takes II: An Evening of 20th Century One-Act Plays," performed by the Saint Leo College Theatre at 7:30 p.m. April 17-20 with a 3 p.m. matinee on April 21 in the Theatre. General admission \$4, Senior Citizens \$3 (SLC personnel: free).
CUB Game Night in The Cage at 9 p.m.

Thursday, April 18

Womens Softball vs. Rollins College in Winter Park, FL at 5:30 p.m.

Saturday, April 20

Mens Varsity Baseball vs. Florida Atlantic University at 7 p.m.

Sunday, April 21

Mens Varsity Baseball vs. Florida Atlantic University at 1 p.m.

Monday, April 22

Academic Awards Banquet at 7 p.m. in the west end of the McDonald Cafeteria. Call 588-8460 for details.

Friday, April 26 062

Athletic Hall of Fame at 6:30 p.m. in the McDonald Center. Five SLC alumni will be inducted into the SLC Athletic Hall of Fame. Sponsored by Intercollegiate Athletics 588-8221.

Monday, April 29

Phi Delta Kappa meeting and dinner at 6:30 p.m. in the Duncan Lounge.

Tuesday, April 30

Mens Varsity Baseball vs. University of Tampa in Tampa, FL at 7 p.m.



**For Fast
Hot Delivery
CALL**

TRAVERSE CITY

1121 East Front Street
Traverse City, MI 49684
Phone
(616) 941-1767

DADE CITY

426 N. 7th Street
Dade City, FL 33525
Phone
(904) 567-9424

CLERMONT

1041 W. Hwy. 50
Clermont, FL 32711
Phone
(904) 394-8595

GJ's PIZZA

Buy One Pizza - Get One Free!

You also receive a quart of Pepsi with each Pizza Order

	Sm.	Med.	Lg.
Cheese	5.15	7.10	9.55
Cheese & One Item	6.10	8.15	10.65
Cheese & Two Items	6.90	9.10	11.75
Cheese & Three Items	7.70	9.95	12.85
Cheese & Four Items	8.50	11.00	13.95
GJ's Deluxe Special	9.35	11.55	14.45
Special Orders - 5 or More Items	.80 ea.	.90 ea.	1.00 ea.
Extra Sauce			Free
Vegetarian Special	9.95	12.05	14.95
Chef's Salad			2.95
Large Pizza Slice			1.25

Items Available
On GJ's Pizza

Pepperoni	Ham
Mushrooms	Onions
Bacon	Ground Beef
Green Peppers	Black Olives
Green Olives	Italian Sausage
Anchovies	

BEVERAGES

M	QT
.50	.95

Pepsi Cola
Diet Pepsi
Mountain Dew
Root Beer

HOURS

MON. - THUR: 10:00 a.m. - ~~12:00~~ ^{1:00 AM} Midnight
FRI. Thru SAT: 10:00 a.m. - 1:00 a.m.
SUNDAY: 12:00 Noon - ~~12:00~~ ^{1:00 AM} Midnight

GJ's Subs 30 Delicious Varieties

"HOT FROM THE GRILL"

	8"	12"
GJ's Original Sub Italian Meats & Cheese	3.20	4.75
Jumbo Original GJ's Original with Extra Meat & Cheese	3.80	5.65
Salami Sub & Cheese	3.25	4.90
Pizza Sub Pizza Sauce, Cheese, Pepperoni, & Mushrooms	3.25	4.90
Italian Sausage And Melted Cheese	3.25	4.90
Roast Beef And Melted Cheese	3.25	4.90
GJ's Deluxe Supreme Ham, Salami, Pepperoni, Cheese, Mushrooms, & Green Peppers	4.25	6.35 ^{5.95}
GJ's Vegetarian Special Any Combination of Mushrooms, Sweet Peppers, Black Olives, Cheese	2.90	4.30

Steak Subs

Featuring USDA Choice
New York Strip Steak

Steak & Cheese Sliced Wafer Thin with Melted Cheese	3.40	5.10
Jumbo Steak & Cheese Extra Meat & Cheese	3.95	5.95
Mushroom Steak Tender Juicy Steak & Mushrooms	3.40	5.10
Mushroom Steak & Cheese Add Melted Cheese	3.65	5.45
Pepper Steak & Cheese Diced Sweet Peppers & Steak	3.65	5.45
Pizza Steak & Cheese Steak, Pizza Sauce, Melted Cheese	3.60	5.35

All Submarines include • Crispy Fresh Lettuce • Red Ripe Tomatoes
• Chopped Onions • and GJ's Own Sauce

Pizza Steak & Mushrooms Steak, Pizza Sauce, Cheese, Mushrooms	3.70	5.55
Jumbo Pizza Steak Extra Meat & Cheese	4.05	6.10
GJ's Steak Special Mushrooms, Sweet Peppers, Pizza Sauce, & Cheese	3.80	5.65

BURGER SUBS

World's Longest Cheeseburger Ground Round with Melted Cheese	2.95	4.55
Jumbo Cheeseburger Extra Meat & Cheese	3.65	5.45
Pepperburger & Cheese Diced Sweet Pepper & Ground Round	3.25	4.90
Pizzaburger & Cheese Ground Round & Pizza Sauce	3.15	4.70
Pizzaburger & Mushrooms Add Delicious Mushrooms	3.35	5.05
Jumbo Pizzaburger Extra Meat & Cheese	3.70	5.45
Mushroomburger & Cheese Add Mushrooms & Melted Cheese	3.25	4.90
GJ's Burger Special Mushrooms, Green Peppers, Pizza Sauce, & Cheese	3.80	5.65
Bacon Burger & Cheese	3.15	4.65

HAM SUBS

Ham & Cheese Sweet Ham & Cheese	3.25	4.90
Jumbo Ham & Cheese Extra Ham & Cheese	3.60	5.65
Fried Ham & Cheese Melted Cheese & Fried Ham	3.25	4.90
Jumbo Fried Ham & Cheese Extra Ham & Cheese	3.80	5.65
Additional Items	.45	.65