



MONARCH

August 26, 1987

Help Start Some New Traditions

Welcome to Saint Leo College, your Saint Leo College. Now that you have joined our extended family, we want to not only welcome you to what may be the finest, most productive years of your lives, but to invite you to join in, to become an active, involved part of the Saint Leo College tradition. Help us celebrate our kinship and our diversity, our unique charm and our charming ways, our glorious past and our spectacular future.

But, beyond that, we invite you to help Saint Leo College, by creating new traditions that will be yours -- and ours -- forever. Help us initiate new traditions that, started today, will endure for decades and decades. Help us to implement ideas, themes and concepts that will become part and parcel of the College's traditional ways, maybe even into the next century.

Homecoming Weekend Canoe races? A charity walk to Busch Gardens? Creating a woodchip trail through the orange groves? What's your idea for a new College tradition? Please tell us. Share your ideas with a member of the Student Affairs staff or your freshman adviser. We would love to hear your thoughts and ideas; we would love to hear fresh and exciting ways to keep the spirit of Saint Leo College alive forever. After all, it's a family tradition!

Welcome to Saint Leo College

Dear New Student:

Welcome to Saint Leo College. You are entering one of the easier stages in life. There will be times when you believe your experiences at College are difficult. You will have to write papers, solve problems, take lab courses, take what you believe are unreal examinations. You will even be required to attend class! Many of those activities are demanding, but the fact is that you will be able to master the discipline to make these accomplishments a reality.

Despite the pressures of college work, you will have freedom as you will never have it again. Let me detail a few examples:

You will be able to arrange your own schedule.

You will be able to take naps, and take time to play sports during the day.

You will have ample time to study.

You have a freedom of choice that you may not have in the future, and

You have an opportunity to choose instructors and courses and your own activities outside class.

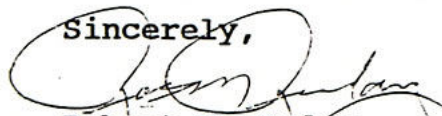
College will be somewhat easy because of the guarantees. You are guaranteed attention and supervision and caring. You are also guaranteed friends. The first step to show you of the care and friends that you have at Saint Leo is through the orientation program. Instantly you will have 12-20 friends, a peer counselor in the form of an Orientation Leader and a Freshman adviser who is carefully chosen.

As you progress as a student, you will receive attention and caring from others. A few of these include your resident advisers and director, faculty adviser, individual faculty members and the staff who works here.

We make no promises to you. We will extend many opportunities to you. You will have the choice of taking advantage of these opportunities.

The first priority for students is to learn and to be educated. In order to remain at Saint Leo College, you must be able to perform in the classroom. In order to prepare yourself for life, you must be able to learn outside of the classroom. Take advantage of the many co-curricular activities and leadership opportunities that Saint Leo has to offer to each of you.

Sincerely,



Robert M. Ruday

Vice President for Student Affairs

New Student Convocation Set for September 1

The New Student Convocation/Opening Liturgy will be held September 1, the first day of classes. Both mean new beginnings for all members of the College community. The liturgy is intended to pray for inspiration and guidance for all, and the convocation is the formal initiation of the freshmen into Saint Leo College.

The two will be held beginning at 4 p.m. in the Marion Bowman Activities Center (the gym). (Freshmen are asked to assemble at 3:45 p.m. with their orientation groups outside, while all of the upperclassmen and other guests are being seated inside.) Freshmen will march in procession into the gym, following the faculty who will be dressed in academic robes, and followed by Bishop Larkin of the Saint Petersburg Diocese who will preside at Mass. During the services, freshmen will sit in positions of honor. They will act as servers, gift bearers and readers during the Mass, so those with experience are asked to let their orientation group leader know as soon as possible.

Immediately following the Mass, the convocation will begin with a welcoming address by the College President, Monsignor Frank M. Mouch. The Student Government President, Robert Cooper, will then speak to the students on what it means to be a Saint Leo student. The keynote address will be given by the Chairperson of the Education Division, Dr. Lucy Fuchs. Her topic will be "Why a Saint Leo College education is so special." The Convocation will conclude with the Bishop's Blessing.

In order to make it easier for all students to attend this important College function, all school offices and campus facilities will close at 4 p.m. Also, dinner service in the cafeteria will be postponed and will not begin until 5:30 p.m.

Orientation Co-Chairpersons

The co-chairpersons of the 1987 orientation program are Ellen Fitzgerald and Gina Halgren.

Ellen is a senior who is majoring in both elementary education and music theatre. She is from Illinois and is president of Alpha Omicron Pi National Social Sorority, secretary of the Residence Hall Judicial Board, and involved with various theatre productions. Ellen has been an orientation leader for two years. Ellen's "top priority is to welcome freshmen by creating a friendly, family atmosphere."

Gina is a junior who is majoring in marketing and is from Altamonte Springs. She has been president of the Resident Hall Association, Vice President of Alpha Xi Omega Social Sorority, Freshman Class vice president, SGA senator and was an orientation leader both semesters this past year. Gina is very excited about being chosen as an Orientation co-chairperson. She "wants to get to know the new students, express her Saint Leo school spirit and pride to them."

Freshman Class Officers

Have you had experience as a class officer? Or, if you have not had any experience but want to become involved in campus life, consider running for freshman class office.

If you are interested, the proper steps to run are as follows:

1. Be a member of the freshman class.
2. Pick up a petition from the SGA Office or the Office of the Vice President for Student Affairs.
3. Turn in the petition by Thursday, September 10, to one of the above offices.

The class offices are President, Vice President, Secretary and Treasurer.



Greetings, Advice and Directions

Ready to start getting acquainted with all the new faces and places that characterize Saint Leo College? To make the task a bit easier, we have included greetings, advice and directions from various members of the College community. You'll meet all these people personally in the days to come and we are sure you'll find, in each instance, some of the friendliest people around: Saint Leo College people!

Panhellenic

Looking back at my very first weeks at Saint Leo, I can remember how new and confusing college life seemed, not to mention lonely! But that only lasted a short while. I soon became involved with campus organizations and functions and made friendships that will last a lifetime!

The one particular organization that I am devoted to is Panhellenic. The work Panhellenic means "All Greek."

There are five local sororities: Alpha Sigma, Delta Phi Delta, Phi Tau Omega, Psi Theta Epsilon, and Alpha Xi Omega and one national sorority: Alpha Omicron Pi, which belong to the Panhellenic Organization. Panhellenic coordinates inter-sorority activities and combined Greek functions. Panhellenic is interested in the student body as well as Greeks becoming involved in Greek life.

I cannot stress too strongly the importance and rewards of becoming involved in Saint Leo's many activities and organizations. Panhellenic, together with Inter-Fraternity Council, creates an atmosphere of friendship, leadership and memories that you will hold close to your heart for a lifetime.

I am looking forward to meeting you and encourage you to attend the Panhellenic Rush in September.

Best of luck this semester,
Elizabeth Jung
Panhellenic President

RA's Welcome You to Saint Leo

Assigned to each floor or living unit is a Resident Assistant (RA). RA's are paraprofessional student staff members selected on the basis of their interpersonal and leadership skills. They are trained to help others sort out problems such as roommate conflicts, personal relationships, homesickness and other typical college adjustment concerns.

Adjusting to being at college, away from home (for many the first time), and finding one's way around may not be easy. RA's are eager to help make this transition as smooth as possible. Your RA will greet you and answer your questions when you move on to your residence hall floor. We trust that this is the beginning of a long and exciting relationship with Saint Leo College.

Theatre

Theatre at Saint Leo is open to all members of the Saint Leo Community. The Saint Leo College Theatre produces four plays each year. The first show this year is "Harvey." The auditions will be September 9 in the College Theatre -- all are invited to audition. Later in the year we will be doing "The Shadow Box," "Macbeth," and "The Man With a Load of Mischief."

Two classes especially appropriate for freshmen (they count as Basic Studies) are Introduction to Theatre and Drama and Stagecraft. Intro focuses on the nature of theatre and drama. Stagecraft involves the technical side of theatre and includes participation in mounting our theatre productions.

If you have any questions about theatre at Saint Leo, just ask David Frankel, Director of Theatre, or Dennis Henry, Resident Designer and Technical Director. Their offices are in the College Theatre building. Or, find some theatre students and ask them!

You do not have to be a theatre major to audition.



Hang Out With RHA

The summer has ended and it's time again for classes to begin. Soon the campus will be buzzing with returning students reuniting with old friends and making new ones. Only you can make college life happen for yourself! You can choose to simply "Go to School" or really become a part of the Saint Leo College community by becoming involved.

The Resident Hall Association works on developing community within the residence halls. It provides entertainment and establishes a place that's not just a "Dorm" but a fun Resident Hall Lifestyle, with friends and a homey atmosphere.

RHA, with its new executive board, is working on a new theme called "The Hang Out." We're establishing a place where everyone can gather and do just that.

RHA is looking for excited, enthusiastic people to help us brainstorm and make "The Hang Out" happen. You could be the key to something great!

Watch the Daily Say-So for meeting times and places!! Hope to see you there!

Gina Halgren
President of RHA

CUB

The College Union Board, also known as CUB, provides educational, recreational and social events for the campus and surrounding community.

CUB has a full semester planned, with various comedians, magicians, musicians and other exciting attractions scheduled.

The CUB Office is located in the Student Center. We meet once a week and membership is open to all members of the Saint Leo College community.

If you have any questions, stop by and see us or give us a call at ext. 8359.

Orientation Leaders

Nine states and three countries are represented by the 30 student leaders who have volunteered their time and are returning to campus early to be orientation leaders.

The leaders, class standing and state/country represented are:

LEADERS	CLASS STANDING	STATE/COUNTRY
Stephanie Burns	Junior	Maine
Susan Marie Cabral	Sophomore	Connecticut
Lorna Dawson	Senior	British Virgin Islands
Charmaine DeCastro	Sophomore	Florida
Hope Fernans	Senior	Florida
Ellen Fitzgerald	Senior	Illinois
Lori Fratarcangelo	Senior	California
Terri Giardino	Senior	Florida
Kathy Goldbach	Senior	Florida
Patricia Gourzong	Junior	Grand Cayman
Jami Green	Sophomore	Georgia
Shannon Griffin	Junior	Florida
Kathie Lynn Guerra	Senior	Florida
Gina Halgren	Junior	Florida
Kerry Keegan	Senior	Florida
Barbara Anne Kirk	Junior	New Jersey
Karen Kropke	Junior	New Jersey
Laura LaBerge	Senior	Florida
Stephen Lleida	Senior	Bahamas
Terese Lurgia	Junior	Florida
Stephen Miller	Junior	Florida
Bridget Murray	Sophomore	Florida
Colleen Murray	Junior	Florida
Tina Nemerof	Junior	Florida
Gina Petti	Junior	Florida
Jolene Reynolds	Senior	Florida
Elizabeth Sawyer	Sophomore	Florida
Zenith Taylor	Senior	New York
Cyndee Thomas	Senior	Florida
Lisa Zaccagnini	Senior	Florida
Joanne Zarro	Sophomore	Florida

Campus Court

Applications are now open for those interested in serving on the Campus Court. The preferred membership is two members of each class. Please pick up an application from the Vice President for Student Affairs Office located in St. Edward Hall.

Saint Leo International Association

The Saint Leo International Student Association welcomes you to Leo Land. We invite you to join us at our first meeting of the semester. Dates will be posted in the Daily Say-So. We may just be the type of club you're searching for. As well as involvement in service projects, we offer lots of fun, entertainment and togetherness. Our main events are Open House in the fall and International Week in the spring. At these times we offer the student body, staff, faculty and friends of Saint Leo College just a sample of our International cultures and cuisine. Be a part of this fun and frolic. Join our "family" away from home.

Della Stammers

New and Improved

The Plaza at the entrance to the campus between Security and the Campus Store is being renovated. Tables and benches are being installed along with canopies to give students and visitors a comfortable and attractive place to meet and congregate. The renovation is being performed by Physical Plant employees in their campaign to improve the campus facilities. Enjoy!

William Creighton

Director, Physical Plant

The Monarch

As a new student learning your way around the campus, you can find all the school news and information in our college newspaper --The Monarch. The 1987-88 edition of The Monarch will feature articles on the people, events, and the community of Saint Leo.

The Monarch is published every three weeks. You can pick up copies for free in the bright green racks around the campus.

If you are interested in working on The Monarch please stop by our office located in St. Francis or call extension 8355. You do not need to have journalism experience.

Please feel free to share your comments, ideas, and thoughts with any Monarch staff member. We want the college newspaper to cover all of Leo Land.

Army ROTC

Start planning your future today, with Army R.O.T.C. Our program at Saint Leo is highly successful, ranking with the best in the country.

In college, you'll select a field of study that interests you, and that you expect to lead to a rewarding career, but in today's highly competitive job market you'll find that employers want more than just a good education. They want someone who also has the interpersonal skills of a manager and the ability to handle responsibility and make decisions. These are the qualities of leadership. But how does a college student with little or no work experience learn to be a leader? Simple. Army R.O.T.C. trains students to be leaders!

Army R.O.T.C. offers you leadership training while you're still in college. A combination of classroom instruction and practical, "hands on" training teaches responsibility, the desire to achieve and personal confidence. This training applies directly to whatever civilian career you choose and is offered nowhere else in college.

For freshman and sophomores there is no obligation to the Army. All students are welcome to attend classes or weekly training. Books and uniforms are furnished. Successful completion of the four-year program will entitle you to a commission as an officer in the U.S. Army, either in the reserves or on active duty.

In addition we do fun things on-and off-campus. Rappelling, canoeing and adventure training are just a few of the activities offered. Numerous scholarships that pay for tuition, books and \$100 a month are also available.

So sign up now for MSE 100 or drop by the old gym and see Major Davidson, or talk to a cadet about the program! Start your future now!

 **Army ROTC.**
Learn what it takes to lead.

It's the Law!

A reminder to all bicyclists that the state law clearly states that no more than two bicycles shall be ridden side by side on public roadways.

Presently the town of San Antonio is seeking to change the law and enact an ordinance which would permit only one bicycle at any time be on a public roadway, unless a special event were being held.

If this city ordinance becomes effective in the near future, notification will be made on all necessary campus bulletin boards and in the Say-So.

Please remember that designated bicycle paths or routes are for your safety and convenience.

An Escort Service is provided by the Security Department from the Security Office to the Marmion-Snyder area daily during the following hours:

Sunday through Thursday

8 p.m. 10 p.m. 12 p.m.

Friday and Saturday

8 p.m. 10 p.m. 12 p.m. 2 a.m.

Emergency Vehicle Assistance/Aid

1. **Out of Gas:** A 5 gallon gasoline can may be checked out at Security Office with a current Student ID and your signature.
2. **Flat tire:** The Security Department has Instant Fix-A Flat that you may have applied to your flat tire upon request and your signature. There is a \$2 charge.
3. **Dead battery:** Jumper cables are available at the Security Office and an attempt will be made to start your vehicle, upon request and your signature on a request card.
4. **Keys locked in vehicle:** A Security Officer will attempt to unlock you car for you, upon signing a request card for this service.

Al Woodall
Director of Security

Residence Hall Government

One way for a person to improve the quality of life in his/her community is to get involved. Through involvement, a student takes advantage of many learning opportunities. The opportunities and degree of involvement are only limited by the student's imagination. One of the traditional areas of involvement is Residence Hall Government.

Hall government leaders represent their own living units and their residence hall on campus. These student representatives are charged with allocating the \$10 activity fee collected at check-in. They also can provide programs for all students to participate in and make recommendations concerning changes in residence hall policy and insight into student life on campus.

Residence Hall Government is a unique opportunity to be involved in campus life and a practical way to develop leadership skills to use for the rest of one's life. Please look for information posted about the first Hall Government meeting in your residence hall. Resident assistants and resident directors can answer specific questions and provide information concerning the various hall government positions available.

Health Center

The Health Center would like to extend a warm Florida welcome to all new and returning students, as well as faculty and staff. Please feel free to stop by and get acquainted with Ms. Bobbi Sponheim, the new Director of Health Services. The Health Center is located on the first floor of St. Edward Hall. Hours are 8 a.m. to 12 p.m. and 1 to 5 p.m., Monday through Friday. Hope this will be a happy, healthy and safe year for all at Saint Leo.

Bobette Sponheim
Director of Health Services

Music, Music, Music

The Saint Leo Show Choir needs several instrumentalists to perform with them during the school year. Dr. Daniel Delisi, conductor of the group, is looking for piano players to accompany in rehearsals and performances. The Music Department has a new synthesizer which will be used in some of the performances, and will add much interest to the accompanist's job. Also needed for the Show Choir is a trap set percussionist, bass player (electric or acoustic), and sax, trumpet and trombone players. Any interested students should contact Dr. Delisi as soon as possible. Office: 305 Saint Leo Hall. Phone: ext. 8297.

Choir and Band

The Saint Leo Stage Band meets Tuesdays and Thursdays, from 4 to 5 p.m. in Selby Hall. No audition is necessary, and instruments are available for those who need them. Contact the Director, Professor John Higgins in Saint Leo Hall, for more information or come to a rehearsal.

The two Saint Leo choirs, the Show Choir and the Oratorio Society, are open to all Saint Leo students without audition. The Show Choir meets Mondays, Wednesdays, and Fridays from 3 to 4 p.m. in Selby Hall. The Oratorio Society rehearses Monday evenings from 7:30 to 9:30 p.m. in Selby. Contact the Director, Dr. Delisi (St. Leo Hall 305; Phone: ext. 8297) for more information, or come to a rehearsal.

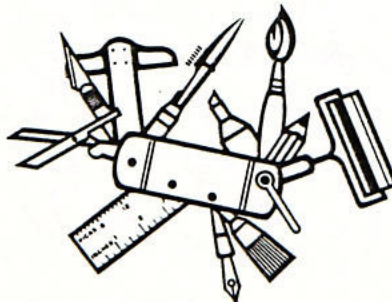


Clubs and Organizations

Do you want more information about the campus clubs and organizations? The Presidents of all of the organizations are listed below:

Organization	President
Aerobics	Lori Fratarcangelo
Alpha Omicron Pi	Ellen Fitzgerald
Alpha Sigma	Mary Letcher
Alpha Sigma Chi	Jack Minnelli
Alpha Xi Omega	Kathy Goldbach
American Marketing Assoc.	Michele Mott
Campus Court	Zenith Taylor
Campus Ministry	Clair Berry
Cheerleaders	Paige Beck
Circle K Club	Lorna Dawson
College Union Board	Gina Petti
Council for Exceptional Children	Jolene Reynolds
Dance Club	Helena Dackerman
Delta Epsilon Sigma	Susan Davis-Jackson
Delta Phi Delta	Kara O'Brien
Golden Legend	Christina Coble
Monarch	Cyndee Thomas
Panhellenic	Eljizabeth Jung
Phi Tau Omega	Simone Schuyler
Saint Leo International Student Assoc.	Della Stammers
Student Government Association	Rob Cooper
Sigma Phi Epsilon	Matthew Burke
The Magazine	Darren Felty

You may leave a message for any of the above with Ms. Cindy Smith at the Office for Student Development, lower level, McDonald Student Center.



Inquiring Minds Want to Know

Dear Leo,

What are the hours for the Snack Bar in the McDonald Student Center?

Signed: Marvin Munchie

Dear Marvin,

The Snack Bar has lots of tasty items for your "snack attacks" and is located in two locations. During the weekday from 8 a.m. to 2:30 p.m., the snack bar is opened on the upper floor. In order to gain entrance, please use the west door. From 4 p.m. to 11 p.m., the snack bar is open in the Lion's Den, lower level. On weekends, the Snack Bar is in the Lion's Den on Saturday from 4 p.m. to 11:30 p.m., Sunday, from 1 p.m. to 9 p.m.. Hours will be extended when activities are held.

Dear Leo,

Where can I find out information about getting a job? What types of jobs are there on campus?

Signed: Wanna Job

Dear Wanna Job,

The first step for an on-campus job is at the Financial Aid Office. Most campus jobs are based on financial aid and need and are part of the College Work Study Program, partially funded by the Federal Government. But, if you want to work, find out all of the possibilities and restrictions from the Financial Aid Office.

Dear Leo,

I understand that I can drop and add classes. What are the important dates and other information to keep in mind?

Signed: Full Time Student

Dear Full Time Student,

There are some important facts and dates to consider if you indeed drop or add classes. The last day to add classes is Friday, September 4. This is also the last day to drop a class without being charged a fee of \$10.

The last day to drop a class is Friday, Oct. 30. If you do drop a class, please be sure of the consequences. Students who drop below 12 hours will not be full-time students. Full-time students may lose their eligibility for financial aid and may not be eligible to live in the resident halls.

Dear Leo,

Is there anything to do at Saint Leo at night or on the weekends?

Signed: Suzy Socialite

Dear Suzy,

You betcha!! The Activities Board plans an average or two events per week, clubs and organization about one. Couple this with all of the sports events and club meetings and you may have to budget your time so you can have enough for study.

Dear Leo,

Do the instructors really spend time with the students? Do they care?

Signed: Shy and Timid

Dear Shy and Timid,

Yes! Yes! Yes! The instructors at Saint Leo College have a commitment to students and the philosophy of our school is very people oriented. You will find that all of the students appreciate the dedication of the staff.

Dear Leo,

When is the pool open during the academic year?

Signed: Mark Spitz

Dear Mark,

You still do keep in shape after winning all those Olympic gold medals, don't you! Welcome to Leo Land! The schedule for the pool is as follows:

Weekdays -- 10 a.m. sunbathing; swimming 2-6 p.m.

Weekends -- 10 a.m. to 6 p.m. -- sunbathing and swimming

Dear Leo,

Where can I rent a refrigerator for my room?

Signed: Penguin Encounter

Dear Penguin,

I have to get over to Sea World to see your new attraction. But, while you are on campus, contact the Business Office for a refrigerator. They will take applications on September 3 and 4. Please bring a \$10 deposit with you. They will give you further information.

Dear Leo,

Tell me about the lake. Can we swim in it?

Signed: Charley the Tuna

Dear Charley,

Not right now, but soon! The problem has been diagnosed and swimming may be possible within the next 3-4 months!

Dear Leo,

Can you tell me who is in charge of Campus Ministry and where are they located?

Signed: Wanting to be an involved
Christian

Dear Involved,

The Campus Ministry is headed up by Sister Mary Clare Neuhofer, O.S.B., and Father Leo Schlosser, O.S.B., is the campus minister. The offices are located in St. Edward Hall. You have an open invitation to visit--bring a friend!!

Dear Leo,

When do grade advisories come out during the semester? What happens to them? Where do they go?

Signed: Studious

Dear Studious,

All unsatisfactory mid-semester grades are known as advisory grades. The faculty submits advisory grades to the Records Office at mid-term (October 12 this semester). These advisories are sent to your home address. So you parents will know if you are indeed studious.

Dear Leo,

I am a transfer student. May I pledge a Greek organization during my first semester?

Signed: Jimmy The Greek

Dear Jimmy The Greek,

Transfer students may pledge if they have a least 12 transferable credits and a grade point average of at least 2.00.

Three Questions, One Lament

What are the visitation hours for the Residence Halls?

Visitation hours are from noon to midnight, Monday through Thursday; noon to 2 a.m. Friday; 9 a.m. to 2 a.m. Saturday; and 9 a.m. to midnight on Sundays. Male guests to Marmion, Snyder and Priory Halls must sign in at hall's front desk and leave an ID card. Visitation outside of these hours is a violation of Residence Hall policy. Compliance with all policies is essential and expected. Violating the visitation policy will result in a discipline conference with a Residence Hall staff member. Sanctions depend upon circumstances and could range from a warning to probation or completion of a task. A repeated violation will result in more severe sanctions, including removal from the residence halls.

If I have a problem with my roommate or room, what should I do?

If you have a problem with your room, you should talk to your Resident Assistant. If maintenance is required, they will refer the problem to the maintenance staff. If you are unhappy with some aspect of your room, your RA can help you resolve the problem, or advise you about the room change process.

If you have a problem with your roommate, the person you should talk with is your roommate. Most concerns and difficulties can be resolved by talking openly and honestly with each other. Most problems that do occur or persist result from not enough communication between roommates. If you have a concern, talk to your roommate. They may not be aware of your concern. Don't leave each other notes. Communicate face to face. It's harder, but more personal and you can state your feelings concisely and clearly. Talk about how their actions make you feel, but don't criticize them. Think about how you would like to be told something. Most importantly, listen to your roommate. A successful roommate relationship depends on cooperation, consideration, respect and compromise.

If you still have problems, talk to your RA. They can help you come up with solutions, or can even serve as a moderator. The worst thing you can do is not to talk to anybody about the problem, especially your roommate.



How do I pick up my packages that I sent to the school before I arrived?

Contact you RA about times to claim your packages. Residents of Henderson and Benoit can pick up their packages in the storage area located in each building. Roderick residents can pick up their packages in Benoit. St. Leo and St. Edward students need to go to the lobby area of St. Edward during the designated times. Residents of Villa, Priory, Marmion and Snyder should go to the Marmion-Snyder front desk for the exact location of their stored packages. Packages can only be retrieved during designated times. These times will be posted, and are also available from you RA.

No One Ever Listens to Me

Have you ever felt that you've got some great ideas or thoughts, but no one will listen. Well, now you have an opportunity to share your ideas, and turn them into action. You'll also have the opportunity to get involved and improve the quality of life at Saint Leo. And you can do all of this, with very little investment of time.

A couple of organizations allow you and invite you to do just that. Each residence area has its own hall government. This council of students represents the residents of that hall in a decision-making capacity, and controls programming funds used to provide activities, services or equipment for the hall. The Residence Hall Association represents all resident students. Frankie Minor, Director of Residential Life, meets regularly with the RHA to gather input and suggestions on how to improve the residence halls. The RHA can help determine and set residence hall policies. The RHA also presents programs, activities and services for the resident students.

The Monarch is a Saint Leo College student production. Cyndee Thomas is editor, Bob Quarteroni advisor. To contact The Monarch, call 588-8355.

Special thanks to Ms. Patti Bunner, typist, and to Colleen A. Murray.

LIBRARY