

# ★ Special Edition ★



# MONARCH

Saint Leo, Florida 33574

Wednesday, August 1, 1990

## ORIENTATION

# Have we got plans for you!

Orientation for the fall 1990 promises to be both enjoyable and informative! Typically, students have thoughts of a thousand questions over the summer. The Orientation staff has lined up some great people to answer ALL of those questions. During the time between Aug. 29 and Sept. 5, new students will have the opportunity to become familiar with the Saint Leo College campus, its facilities and its services. It certainly helps a student feel more at "home" to know his way around the cafeteria and his residence hall. By the end of our campus tours, every student will know the "ins and outs" of the campus. Academic advisement and registration procedures, as well as other important details, will also be presented during Orientation. After Orientation, a new student should begin his academic career with more confidence.

### FRESHMEN

Orientation begins on Wednesday, Aug. 29, with a dinner at 6 p.m. at the McDonald Student Center Cafeteria. If your family is on campus, they are welcome to attend. Family meals will be \$6.95 per plate, while your meal price is covered by the College.

By 7:30 p.m., students will begin the REAL business of orientation - information sessions and academic advisement.

At 9 p.m. there will be a mandatory hall meeting for all new students to discuss the rules and regulations of the dorms.

### TRANSFERS

Transfer Orientation is specifically designed to meet the concerns of transfer students. Your abbreviated orientation begins with a dinner at 6 p.m. on Wednesday, Aug. 29, in the McDonald Student Center Cafeteria. Immediately following dinner, you'll meet with your Orientation Leader and begin planning for the registration process.

### ALL NEW STUDENTS

Once you have arrived on campus, you'll want to proceed directly to the McDonald Center for Orientation Registration. You'll need to register for Orientation before you check into your residence hall. (In fact, you won't be allowed to check into your residence hall without proof of Orientation Registration.)

Be sure to reserve time during your first day on campus to arrange for your campus post office box. If you plan to do your banking locally, you'll also want to arrange for that. There is a list of local banks in this issue of The Monarch for your convenience.



Orientation Leaders will be on hand throughout the week to answer questions and give directions. Your first few days - Wednesday, Thursday and Friday - will be filled with campus life orientation and academic advisement. Your Orientation Leader will be a very important person to you during this week of your life.

### SEPTEMBER 1 AND 2

By Friday evening, you will be whirling with information about campus life, so we've planned a relaxing weekend - Busch Gardens on Saturday and a visit to Adventure Island on Sunday! Well, maybe we haven't planned a relaxing weekend, but it will certainly be fun! You'll want to pay your \$30 fee for both events during Orientation Registration. We'll take buses to both events, so reserve your seat as soon as possible during Orientation Registration.

### LABOR DAY, SEPTEMBER 3

You'll probably want to rest from your exciting weekend on Labor Day and finish "settling in" your room. Upperclassmen will be returning to the residence halls this date. A DJ will be playing poolside at the Marion Bowman Activities Center from 11 a.m. until 3 p.m.

### TUESDAY, SEPTEMBER 4

Today is THE DAY! You'll register for classes at the Marion Bowman Activities Center. Don't worry! You'll be well prepared for registration after your academic advisement meetings with your mentor. You'll also see lots of friendly and familiar faces (the orientation leaders) during the registration process.

### THE BEGINNINGS

Wednesday is the first day of all classes for the first semester. Thursday, Sept. 13 all new and returning students will celebrate the beginning of the new academic year with the New Student Convocation/Opening Liturgy at 11 a.m. At this time, we officially induct all new students, freshmen and transfers into our College community.

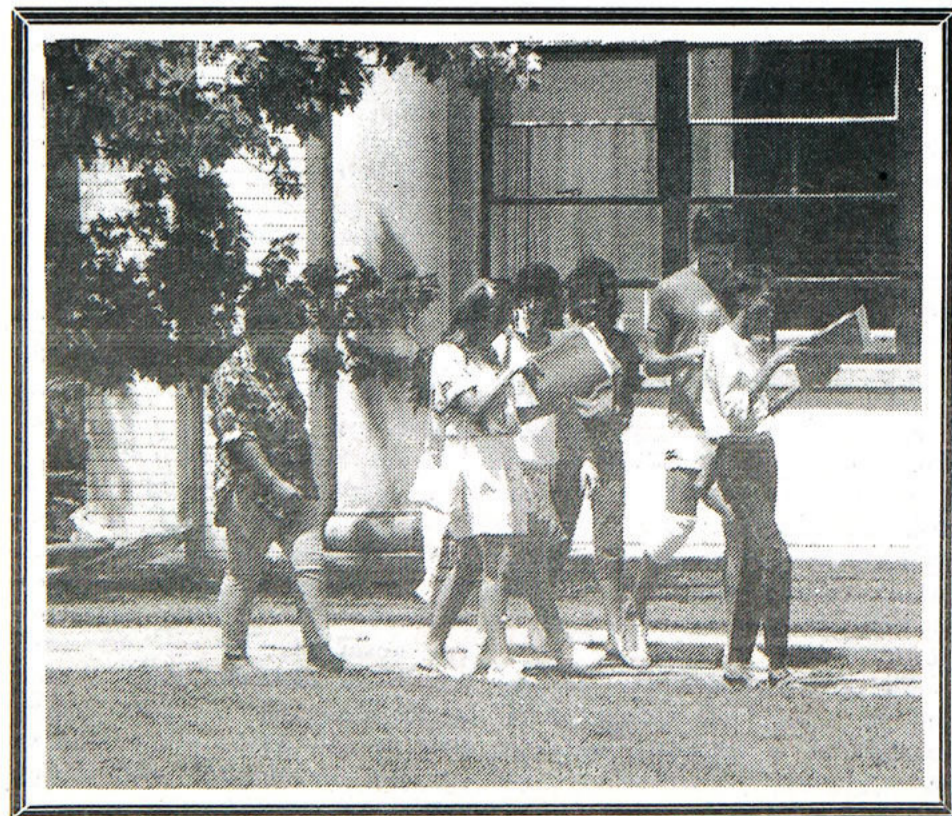
**SEE INSIDE FOR  
INFORMATION  
ON...**

**•ORIENTATION  
LEADERS**

**•RESIDENCE HALL  
LIFE**

**and**

**•CAMPUS ACTIVITIES**







# President's Corner

Dear New Students:

Welcome to all classes! While all students returning to campus lift the spirits of the faculty and staff, new enrollees are of particular interest. Freshman arrive with all kinds of ideas and expectations, and likely with some fears. The last we can and will work on quickly; they need not to be a burden for long. Expectations take a little longer to realize since, hopefully, they are more profound. Moreover, they are never met well if one looks to others - be they faculty, fellow students, coaches or the cafeteria - to make them come to fruition. The best and the most realistic expectations are the ones we realize ourselves, even if others help us.

It's the ideas we bring to a new situation which are, or should be, the most exciting part of college life. What you come with is important, but what you leave with is even more important. That's what college is all about, experiencing, through the educational process and the extracurricular activities, the modification of our thinking, of our sense of who we are, of our vision for the future. Some people call it maturing, others talk about becoming more realistic about the world, still others simply say growing.

I call it idea-crushing, the process of expressing our thinking, living by our thoughts, assimilating new ones and carefully observing that the resulting "crunch" is what we want, even if the results are surprising. For everyone who opens himself/herself to that possibility will be surprised.

A final thought about this experience of maturing, growing or idea-crushing. This college, now one hundred years old, has done its work well over the century because it recognizes that one of the "ideas" in the mix of the college student's experience that is most productive of personal development is God. That is the reason for including courses in theology in the core curriculum. God is a powerful force in the history and present experience of all people and we see ourselves best when we look at who we are in relation to God.

I wish all of our students success in the coming year. May you surprise the faculty and the staff with your brilliance and performance!

Sincerely,

Msgr. Frank M. Mouch  
President, Saint Leo College

# EXTRA! EXTRA! EXTRA!

Parents, you can read all about it by getting a full year's subscription to Saint Leo's student newspaper. Just send \$20.00 to

The MONARCH  
P.O. Drawer 1  
Saint Leo, FL 33574

## Point to Ponder

"It is my conviction that you will find in the vast storehouse of learning no chamber that will provide more treasures for your purpose than in the American heritage. Khrushchev's message to the people of the outer world was, "We will bury you!" The American message to the people of the outer world was and is, "We will exalt you."

Each of us has the choice to opt for the shoestrings or the stars.

- Dr. John A. Howard  
President, Rockford College

# Monarch

Saint Francis Hall  
Saint Leo College  
(904) 588-8355

Editor/Copy Editor: Tim Moore  
Associate/Design Editor: Dan Eckert

This is a special edition of the *Monarch*.

The regular *Monarch* is a weekly student publication. This special issue was created with the help of many people whose hard work brought this publication to you. We hope you enjoy reading this issue as much as we enjoyed bringing it to you. Special thanks must go to Colleen Murray, Brian Chasteen and Seppie Allen.

The opinions and stories expressed in the *Monarch* are not necessarily the views of the editor or of Saint Leo College. We invite all old and new students to join the *Monarch* staff next year. If you have any input into this publication, send them to: The *Monarch*, P.O. Drawer I, Saint Leo, FL 33574 or stop by the *Monarch* office located in the basement of St. Francis Hall.

## MONARCH ready for new school year

By Tim Moore  
Associate Editor

Dear New Students:

The *Monarch* welcomes you to Saint Leo College.

This paper is the summer special edition of the *Monarch* and aside from the name does not look very much like the regular editions that you will see during the school year. This special edition is to help you with orientation and to help you settle into college life.

The regular edition of the *Monarch* has evolved over the past few years into an award winning college paper. The American Scholastic Press Association awarded the *Monarch* first place among colleges with 1000 to 1700 students for the second year in a row!

The award showed the *Monarch* to be "an outstanding overall example of a scholastic publication in format, content, and presentation."

Last year the *Monarch* became a weekly paper to keep up with current events (and 'cause we wanted to). This compares with two local city papers, from Dade City and Zephyrhills, which are published once a week as well.

This year the *Monarch* will have some fresh new faces (perhaps some of you) and will include our entertaining columns. Some of our regular features include our continuing liberal/conservative debate column "On the Left/On the Right", our trivia column "La Triviata", "Moore or less..." (an offbeat look at college life), and "Ripping Spins" record reviews.

To continue publishing a successful paper, the *Monarch* needs energetic staff members. If you are interested in contributing to the Saint Leo College newspaper and would like to join the staff, stop by the *Monarch* office, located in the basement of Saint Francis Hall or call 8355. Any student may join the *Monarch* staff at any time.



# ORGANIZATIONS

## Campus Ministry

### A group dedicated to Christian service

Saint Leo College is a school rich with catholic tradition. The school, founded by Benedictine monks, continues its strong ties to the Catholic faith. One of the many ways Christian ideals are promoted here at Saint Leo is through Campus Ministry. Campus Ministry is an organization dedicated to spiritual growth needs of students through daily as well as Sunday masses. As a service organization, it is second to none. For the past three years, Campus Ministry has been named by the Student Government Association as the Outstanding Service Organization because of their work in Dade City as well as the Saint Leo community. Some of the many projects Campus Ministry worked on during the last year included Thanksgiving Day food baskets, Toys for Tots, Easter Baskets for poor and disadvantaged children and many other related activities.



Sister Geraldine enjoys helping the less fortunate by giving to Toys for Tots.

Along with the spiritual and service projects, Campus Ministry also sponsors the Saint Leo College Mardi Gras. This pre-lenten celebration in its third year was a huge success this past year with more than 500 people in attendance. Next year's event promises to be bigger and better. Different campus organizations sponsored food and game booths, door prizes and a live jazz band.

In order to incorporate members of other religions into the schools spirit life, Campus Ministry also sponsors monthly ecumenical services. These services are dedicated to bringing together all faiths.

Saint Leo can be a very rewarding place and the time can be both educational and fun. Campus Ministry does all it can to incorporate all of these things into one. They believe in growth through learning of God.

## CUB wants to entertain

They bring the funniest comedians, the biggest movies, the best magicians, the coolest singers and the greatest bands to Saint Leo College. Who is this group, you are asking yourself? This organization is the College Union Board. They are better known simply as CUB.

What Campus Ministry is to spiritual life, SGA is to leadership, CUB is to bringing the best entertainment possible to Saint Leo College. Over the next year you will experience and be a part of dances, music, individual performances all presented for your enjoyment by CUB! CUB works with thousands of dollars dedicated to one purpose

to entertain the student body of Saint Leo College. This group is working hard right now to plan the events you will see. If you would like to be a part of the decision process, CUB is always looking for new members. Stop by the Student Development Office in the lower level of the McDonald Student Center for more information on how to join CUB.

Last year CUB had a great year with as much success as they have ever had. They brought to Saint Leo block buster movies, a video dance, comedians and the exciting CUB Day. Who knows what new events CUB is thinking up, but it will be very exciting to find out.

The tentative schedule of CUB events for the fall semester '90 is as follows:

- Sept. 4 CUB Welcome Dance
- Sept. 5 Movie - Pretty Woman
- Sept. 8 Lowry Park Zoo
- Sept. 12 Comedy - Rondell Sheridan
- Sept. 15 University Square Mall Trip
- Sept. 19 Movie - Animal House
- Oct. 3 Comedy - Ed Fiala
- Oct. 17 Movie - Clean and Sober
- Oct. 23 Comedy - Marty Putz
- Oct. 29 CUB Film Festival - Nightmare on Elm Street I & II
- Oct. 30 Nightmare on Elm Street III & IV
- Oct. 31 Nightmare on Elm Street V
- Nov. 3 Pool Party
- Nov. 7 Comedy - Henry Cho
- Nov. 10 CUB Bowl Blowout
- Nov. 28 Special Attraction - James Mapes
- Dec. 1 Lakeland Mall Trip
- Dec. 5 Movie - A Wonderful Life
- Dec. 12 Comedy - Lynn and Friends

## Student Government Association SGA's Missing Ingredient?

The Student Government Association (SGA) is a campus organization dedicated to serving the interests of the student body. The SGA is led by President Tom Duffy, Vice President Jennifer Petti, Secretary Brooke Deutscher and Treasurer David Preiler. Through committees and especially the Student Senate, the SGA will be working hard to address issues and concerns.

The Student Senate is intrinsic to SGA's success. The Senate is

made up of representatives of each student organization on campus. The job of the Senate is to voice student opinions and suggest proposals. They are the vital link between students and the SGA.

The main focus of the SGA board this year will be continued emphasis on getting students involved in the organization. All students can attend the SGA meeting and join one of the many committees.

Sometimes an unfortunate

reality facing the SGA is that the group can only be as good as the students support for the organization. When students fail to support the SGA, the group becomes ineffective. Over the past few years, the student support and participation has been getting stronger. Therefore, the SGA is beginning to make a real difference.

In order for the organization to keep getting stronger, it is going to take more than individual student involvement. It is also going

to require organizational involvement and support. The SGA can be a strong instrument of positive change. The group, together with student and organization support, can bring improvements and foster a sense of community.

Remember everyone can make a difference. SGA's future looks good. The organization has solid leadership. This past year, they made great stride in improving the quality of student life. The only thing missing now is YOU.



# NEW BEGININGS

## New academic policy in effect

Dr. Maribeth Durst, Assistant Vice President for Academic Support Services, says the 1990-91 school year will reflect a commitment to higher standards and stricter academic requirements. One aspect reflecting this change will be the increased minimum Cumulative Grade Point Average (GPA) needed to stay enrolled in the college. A Grade Point Average is a cumulative average of all grades received from courses taken.

In the past, the academic requirements were lower than the new standards. A first semester freshman needs to attain a 1.5 GPA. A second semester freshman will need a 1.75 GPA. This compares to a 1.5 GPA in previous years. Under the new guidelines, a student must maintain a 2.0 from the sophomore year on in order to graduate. In previous years, a sophomore needed only a 1.7 GPA and juniors and seniors only a 1.9 GPA. Under the past more lenient GPA policy, 79 students were removed from the college for defi-

cient GPAs following the 1988 fall semester.

Another aspect that will be emphasized will be the new academic honesty policy. This policy was initiated by concerned students through the Student Governments Association. Under this new policy the normal sanction for first-time offenders is failure for a course. The second offense may result in suspension from the college. Even before this stricter policy was enacted, 39 students were accused of academic dishonesty, with 35 found guilty.

Durst states, "We plan on blitzing the campus in the fall with information about cheating, plagiarism, sanctions and the new academic requirements." This blitz will also be in connection with raised standards in the classroom. Teachers will be pushing hard for student excellence. This coupled with increased GPA standards, fewer developmental students and a more stringent academic policy will lead to higher overall stand-

Durst went on to say in order to ease freshman into the academic atmosphere of the college the school will continue to use freshman mentors. Freshmen mentors are professors and administrators who assist incoming students. Durst elaborates that the job of these mentors is to "help freshmen adjust to the college through connecting them with adults who have achieved success in the academic field." A mentor becomes a role model for the new student. They are there to answer the hundreds of questions the new student has. They discuss everything from how to register for classes, to how to deal with a roommate. They also can provide information on such varying topics as how to deal with homesickness to what there is to do on the weekends. The mentor does everything they can to make life at Saint Leo easier in the very confusing first few weeks of college life.

Another of the ways the college assists you along the path to

graduation is through the faculty advisor program. A faculty advisor is here to do just that - advise. An advisor will be assigned to you in your declared field. However, it is the individual student's responsibility to make sure they are getting the right advise. In order to protect yourself, get acquainted with the college catalog and the requirements for your specific field. Durst states, "The advisor is not responsible for your academic life. You are an adult, and it is your job to control your own life. This is part of growing up and being in college, so study your college catalog!"

If Durst, who is in charge of both the freshman mentor program and the academic advisory program, could give all students some advise it would be to, "Make the most of your time here through asking questions. Don't be afraid of uncertainty. Take the longer and harder route, you'll be better if you do. Lastly, this can be a great time in your life, don't blow it.

## Six reasons to read the MONARCH

MOORE OR LESS....

HOROSCOPE

MONARCH MOVIES

ON THE LEFT

ON THE RIGHT

RIPPING SPINS

American Scholastic Press Association

First Place winner 1989

American Scholastic Press Association

First Place with Special Merit winner 1990

### Academic Calendar Fall Semester 1990

Freshmen Arrive Wed., Aug. 29

Transfers Arrive Wed., Aug. 29

Residence Halls Open for Returning Students Mon., Sept. 3

Registration: All full-time Students Tues., Sept. 4

Classes Begin Wed., Sept. 5

Last Day to Add Course or Reduce Course Overload Without Fee Fri., Sept. 7

Opening Convocation Thurs., Sept. 13

Faculty Submit Mid-Term Grades Mon., Oct. 22

Mid-semester Reports Issued Thurs., Oct. 25

Last Day to Drop Courses Thurs., Nov. 1

Pre-registration/Advising fro Spring Semester Begins Mon., Nov. 5

Thanksgiving Holidays Wed. - Fri., Nov. 21-23

Classes Resume Mon., Nov. 26

Pre-registration Ends Wed., Dec. 5

Last Day to Withdraw from College Without Course Failure Thurs., Dec. 6

Last Day to Remove Incompletes Thurs., Dec. 13

Last Day of Classes Thurs., Dec. 13

Final Exams Fri. - Tues., Dec. 14-18

Residence Halls Close at Noon Wed., Dec. 19

All Grades Due (Noon) Wed., Dec. 19



# Emerging Leaders Program To Begin This Fall

A newly created Emerging Leaders Program will begin this Fall at Saint Leo College. The Emerging Leaders Program is designed to provide potential campus leaders with knowledge and skills relevant to a variety of positions of leadership at the College, and to professional employment after graduation. The Program also should function to broaden the student leadership at Saint Leo College, and thus to provide students with increased opportunities for involvement with the College's

administration.

The Emerging Leaders Program will consist of a six week class followed by an appreciation dinner for class participants and a weekend retreat at the nearby Lakehurst Retreat Center. The Program will be directed by Mr. Robert Campbell, who will be working with the Office of Student Development as the Leadership Education Coordinator and the Multicultural Student Advisor.

Each class session will feature a guest speaker who will deliver a

presentation on a specified topic. For example, Monsignor Mouch, President of Saint Leo College, will speak about "Setting Goals and Making Decisions" during the first class. And Mr. Ed Crone, Director of the Main Street USA Project in Dade City will address a class on "Delegating Responsibility and Motivating Volunteers."

The general theme of the Emerging Leaders Program will be that leadership of an organization always involves a commitment to one's community. Thus the pro-

gram will feature several speakers who hold interesting positions of leadership and community involvement.

Twenty eight students have been invited to participate in the inaugural Emerging Leaders Program, and applications will be accepted from this Fall's freshmen and transfer students. For more information about this exciting addition to the College's Student Development Program, call the Office of Student Development, ext. 8358 or 8490.

# Multicultural Student Advisor Appointed

The Spring semester of last academic year saw the creation of the Cultural Diversity Committee, and the celebration of the first annual Cultural Diversity Week. A genuine and growing awareness of the wealth of cultural diversity at Saint Leo College has developed from these initial efforts.

Based upon the concerns expressed by the students and faculty alike, the Administration of Saint Leo College began to address the possibility of someone being appointed as an advisor for students from a multitude of ethnic and cultural backgrounds. And as a direct result of the interest of these students and their willingness to enter into a dialogue with the College's administration, Mr.

Robert Campbell has been appointed the Multicultural Student Advisor.

Mr. Campbell has served as the Academic Advisor for the College since the Fall of 1988. Prior to staffing that position, he was an Academic Counselor and Associate Adjunct Professor of Philosophy at the College's military Education Center at MacDill Air Force Base in Tampa. Beginning this Fall, Mr. Campbell will work part-time as the College's Academic Advisor, and part-time for the Office of Student Development as the Leadership Education Coordinator and Multicultural Student Advisor.

Mr. Campbell hopes to work very closely with all of the students of Saint Leo College in order to

address issues related to cultural diversity, and to implement a variety of educational programs. For example, he hopes to coordinate regular forums and workshops which serve as opportunities for free discussion of how different cultures may relate better to each other. And he will work with Brian Chasteen, Director of Student Development, and the Cultural Diversity Committee to plan this Fall's Cultural Diversity Week. Finally, he will be available to all students for consultation and advice concerning any aspect of multicultural relations.

Says Mr. Campbell of this new aspect of his job at Saint Leo College, "We are blessed with wonderful cultural diversity from

within the United States, throughout the Caribbean and Central America, Western Europe and the Orient. As a small college community, we hope that our students will enjoy learning about each other and benefit from each other's experience and knowledge. From this association, we hope to nourish a deeper understanding and compassion for people of all cultural and ethnic backgrounds."

At the time of this printing, Mr. Campbell was unsure of the location of his office for the new academic year. You can contact him by calling the Office of Student Development, ext. 8358 if you would like to learn more about cultural diversity at Saint Leo College.

# Students Won't Tolerate Price Hike

CPS - Students and their parents, during the 1990's, may be less willing to pay the double-digit increases many colleges imposed during the 1980's, a higher education consultant predicted in a study of what drove schools to raise their prices the past decade.

"Consumers were relatively price-insensitive in the 80's," said Arthur Hauptman, who did the study for the American Council on Education and the College Board, "but it won't be necessarily so in the 90's."

Average college tuition and fees at four-year public schools rose from an average \$636 per year in 1980 to \$1,694 this year.

At private colleges, average tuition and fees in 1980 was \$3,466. This year it was \$8,737.

In the study, called "The College Tuition Spiral," Hauptman

found many schools drastically raised their tuition to physically improve their campuses, raise faculty salaries and bolster institutional aid to students.

They also felt pressure to increase tuition because enrollments had leveled off, making it harder for schools to "spread their fixed costs over growing numbers of student," the study found.

"I don't necessarily think it was a bad decision" to keep raising prices, Hauptman observed. "Schools were faced with these needs and demands, and they figured they could raise costs." Colleges, he added, didn't have to meet those demands by increasing tuition, however. "They chose to do it."

All the extra spending "didn't necessarily improve the quality of teaching," he noted.

Hauptman said he didn't think colleges could maintain the practice of raising tuition faster than the general inflation rate without provoking some kind of political backlash. Yet, "it will take a grassroots expression of dissatisfaction for something to change."

A few hints of a developing backlash have arisen in recent weeks.

In Nevada, state legislators ordered University of Nevada officials, who have proposed raising tuition next year 15 percent, to keep their prices reasonable.

Similarly, Virginia's state legislature voted April 19 to withhold state money from any four-year college that increases undergraduate tuition by more than 6.5 percent or any two-year schools that approve more than a 7.5 percent increase for the 1990-

91 school year.

Additionally, students at Pacific Lutheran, Arizona State, Syracuse, and Rutgers universities, and the universities of Miami, Michigan and Massachusetts have been active in opposing tuition hikes.

Nevertheless, announcements of tuition increases that exceed last year's continued on April 20, when students at Oregon's three public universities learned they will have to pay 9.5 percent more in 1990-91. Four-year state college students will have an 8.5 percent tuition hike.

On April 19, Albert Berry of the Tennessee Higher Education Commission announced Tennessee students' tuition would go up 8.5 percent next school year. The commission had raised rates 7 percent for this school year.

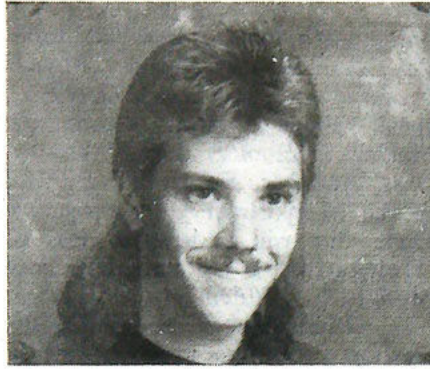


## NOT A SHY ONE IN THE BUNCH!

# Meet your leaders

The Orientation staff for fall 1990 is comprised of sophomores, juniors and seniors. They've been chosen as Orientation Leaders because each is excited about helping you get off to the right start in college life!

Your Orientation Leader will send a postcard to your home address before Orientation starts. You can match their name from the postcard with their picture in this paper, then you'll be sure to recognize them. Of course, they'll be on the lookout for you, too. (Hint: The Orientation Leaders all avow that they are much prettier than their mug shots portray them to be. Wait and see!)



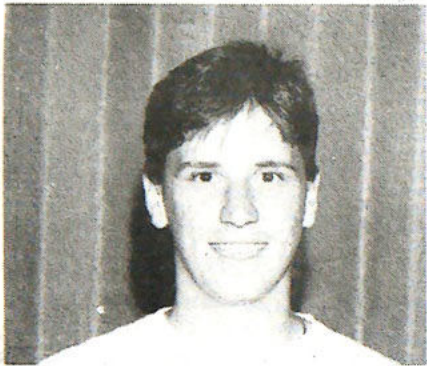
Tim Moore is a senior English writing and literature major from Zephyrhills. Tim is the Associate Editor of the *Monarch*, a tutor in the Writing Center, and is enrolled in the Honors Program. His hobbies include playing tennis, indoor soccer and writing.



Tracy Busby is a junior pre-law major from Dade City. Tracy is a member of Alpha Omicron Pi, the National Panhellenic Conference and is enrolled in the Honors Program. This is Tracy's second year as an orientation leader.



Traci Raulerson is a junior psychology major, with a minor in sociology, from Fort Myers. Traci is the president of Psi Theta Epsilon, a member of the psychology club and is enrolled in the Honors Program.



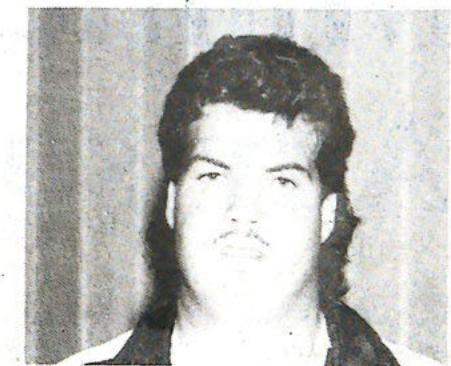
Charlie Herman is a junior pre-law/political science major from Bayonne, New Jersey. Charlie is a member of Sigma Phi Epsilon.



Karen Lyons is a senior early childhood education major from East Norwalk, Connecticut. Karen is an Ambassador for Saint Leo College and is a member of Alpha Omicron Pi.



Kelly Milner is a junior dance/psychology major from Tampa. Kelly is the vice president of the psychology club, an SGA senator, involved in the Dance Company and Dance Tour and is on the National Dean's List.



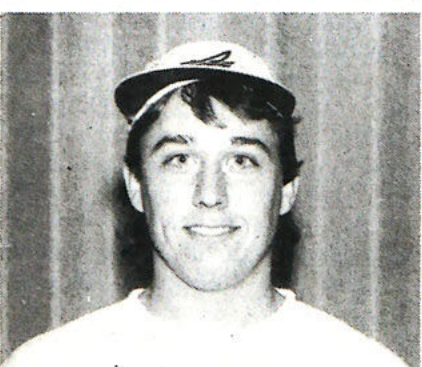
Patrick Ewers is a junior psychology major from Clearwater. Patrick is the treasurer of the psychology club, an SGA senator, a peer counselor and an Emergency Medical Technician.



Kim Winkler is a junior psychology major from Tampa. Kim is the editor of the Golden Legend yearbook and is a member of Alpha Xi Omega.



John Reddick is a junior criminology major from Irvington, New Jersey. John is a member of Tau Kappa Epsilon and is known to his friends as "Big Otis."



Jack Manhire is a junior math education major from Orlando. Jack is a member of Campus Ministry.



Kelly Fortune is a sophomore hotel/restaurant management major from Ashtabula, Ohio. Kelly is a member of Sigma Sigma Sigma and is involved in intramural sports.



Jennifer Petti is a junior business management major from Hollywood. Jennifer is a member of the American Marketing Association, the Fall Family Festival Committee and the Student Government Association.



Eileen Rea is a junior social work major from Clearwater. Eileen is the vice president of the College Union Board and the treasurer and Panhellenic delegate for Alpha Omicron Pi.



Susan Fosnot is a sophomore biology major from Titusville. Susan is a member of the Student Government Association and is enrolled in the Honors Program.



Paul DeVellis is a junior biology major from Medford, Maine. Paul is a member of Sigma Alpha Epsilon. Paul is known to his friends as "Bamm-Bamm." This is Paul's second year as an orientation leader.



NOT PICTURED

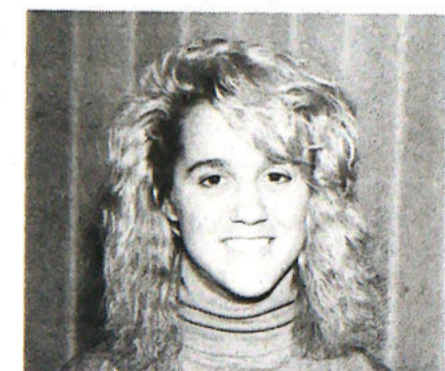
Valerie Woodley Elaine Podgorny  
 Kevin Kennedy Gail Porther  
 Kyle Provost Buster Grzyb



Debbie Jensen is a sophomore psychology major, with a minor in Spanish, from Clearwater. Debbie is a member of Sigma Sigma Sigma.



Katherine Ziadie is a junior criminology major, with a minor in psychology, from Miramar. Katherine is a member of Psi Theta Epsilon.



Holly Buttura is a senior sports management major from Montpelier, Vermont. Holly works at Saint Leo in Academic Services.



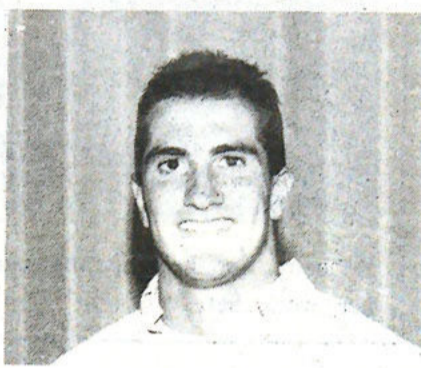
Michelle Cain is a junior dance/theatre major from Cincinnati, Ohio. Michelle is the assistant editor of the Golden Legend yearbook, president of St. Leo and St. Edward Hall Government, a member of CEC, involved in Family Weekend, an SGA senator and is involved in the Dance Company and Dance Tour.

# Board of Governors

The 1990 Orientation Board of Governors planned the Orientation schedule with you in mind. Selected last fall by the '89 Orientation staff, the Governors have helped train the '90 Orientation Staff. They want to hear your compliments and complaints about our program. Be sure to look for them during Orientation Check-In! They are THE BEST! We are sure you will agree with us.



Sara Mauricio is a junior psychology major, with a minor in English, from Miami. Sara is a member of Sigma Sigma Sigma. This is Sara's second year as an orientation leader.



Ross Cortino is a junior marketing major from Naples. Ross is a member of the Board of Governors, a Saint Leo Ambassador and the president of Tau Kappa Epsilon. This is Ross's third year as an orientation leader.



Ralph Rafuse is a hotel/restaurant management major from Dade City. Ralph is the president of the College Union Board, a member of Tau Kappa Epsilon, Circle K and a student manager for Marriott Food Service.



Darcie Rioux is a junior psychology major from LaBelle. Darcie is a member of the College Union Board. This is Darcie's second year as an orientation leader.



Bernadette Parker is a senior special education major from Tampa. Bernadette is the president of the Council for Exceptional Children and a Saint Leo College Ambassador.



Peter Van Dyke is a junior from Barre, Massachusetts.



Anthony Michalski is a junior from Chicago, Illinois. Anthony is a member of Sigma Phi Epsilon.



Anna Molina is a junior accounting/computer information systems major from Leesburg. Anna is a member of CUB, Fall Family Weekend Committee and is a Basic Training leadership graduate.

## Your freshman mentor

You will journey through the first semester at Saint Leo College with the help of your academic mentor.

All entering freshmen are assigned a mentor. A mentor is a faculty member or administrator who can help ease the way and guide and direct you. Your mentor can help you interpret the things that you will be experiencing as a new college student.

You will spend three separate sessions during Orientation with

your freshman mentor learning about the courses you will take, college policies, and procedures such as registration, adding classes and dropping classes. You will also examine the purpose of higher education and your place in it.

During the semester, your mentor will continue meeting with you in a one-credit course, Seminar on Self-Awareness, which is required of all freshman.

In this seminar you will have an opportunity to deal with

problems you may encounter, build your communication skills and participate in group discussions on what you can expect to get out of your college years and what you will be expected to put into them.

By the end of the semester, you should understand your place in our College community and how to work within it to attain your academic and personal goals.



# The cure for what ails you

The Saint Leo College Health Center would like to welcome all new and returning students back for the 1990-91 academic school year. The Health Center is located in Saint Edward's Hall. The Health Center is open Monday through Friday from 8 a.m. to 5 p.m., excluding holidays. The Health Service Director is Bobette Sponheim (Nurse Bobbi), office extension 8347. Have a safe and healthy school year.



Bobette Sponheim is the nurse at Saint Leo. Bobbi enjoys her work here.

## \$\$ Dollars and sense

If you wish to open a checking account, the following local banks are available:

First Union Bank, Hwy. 52, San Antonio (within walking distance)  
Lobby hours: M-Th 9a.m.-4p.m.  
Fri 9a.m.-6p.m.

NCNB, 501 E. Church Street, Dade City  
Lobby hours: M-Th 9a.m.-4p.m.  
Fri 9a.m.-6p.m.

Sun Bank, 700 S. 7th St., Dade City

Lobby hours: M-Th 9a.m.-4p.m.  
Fri 9a.m.-6p.m.

Florida Federal Savings, 409 E. Church St., Dade City  
Lobby hours: M-Th 9a.m.-3p.m.  
Fri 9a.m.-6p.m.

First National Bank of the South, 303 S. 8th St., Dade City  
Lobby hours: M-Th 9a.m.-4p.m.  
Fri 9a.m.-6p.m.

You'll need a local mailing address before you can open a

checking account. Most banks also require a picture I.D. with signature. Post Office boxes are available from the U.S. Postal Service (located on campus) when you arrive. All students are required to rent a box.

The cashier's window of the Business Office, located on the second floor of Saint Francis Hall, is open from 1 p.m. to 4 p.m. Monday through Friday. Students may cash personal checks with their school I.D. card.

## Flying in?

New students flying into Tampa International Airport for Freshmen or Transfer Orientation need to return the Transportation Reply Card received previously in your summer mailing. Saint Leo College vans will be leaving the Blue area of the airport at 12 noon and 3 p.m. on Wednesday, Aug. 29, for freshmen and transfer students. If you have misplaced your Transportation Reply Card, please call (904) 588-8358 to reserve your place on a van.

Since travel in and out of Florida during December and January is quite crowded, students who are planning to fly home for this holiday should make their reservations as early as possible. The middle of September is not early.

Since the departure date for Christmas vacation is dependent on an individual's final examination schedule and the examinations are Dec. 14-18, we suggest that reservations be made for Dec. 19 before noon, as residence halls close at that time. Once a student knows the date of his actual departure, flights can be changed depending on availability.

Again, the middle of September is not too early to make these reservations.

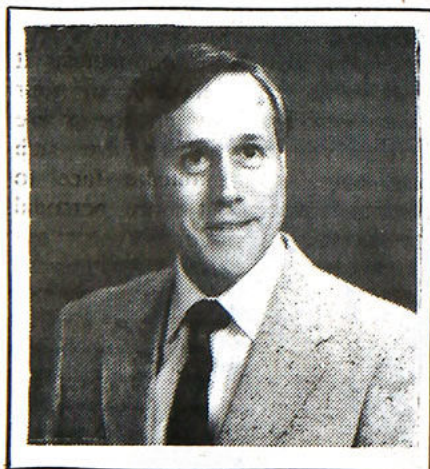
## Don't leave your parents at home

Parents' Orientation will begin at 1 p.m. on Wednesday, Aug. 29. To take full advantage of the orientation requires a bit of schedule juggling. Parents will need to arrive on campus early enough to allow time for Orientation Registration and Residence Hall Check-In. Yes, that means allowing time to take everything out of the car that it took a week to put into it!

There will be a complimentary open buffet in the McDonald Student Center Cafeteria from 11 a.m. until 1 p.m. The whole family will want to take advantage of the delicious buffet and to enjoy a beautiful view of Lake Jovita in the cool comfort of the cafeteria. Following lunch, parents can attend the workshop designed specifically to answer questions and concerns about campus life at Saint Leo. Students are free to return to their rooms to start settling in. Or, students are welcome to procrastinate about unpacking and migrate from room to room meeting other new students. If the afternoon calls for it, the pool will also be available for those unwilling to face unpacking.

Parents and students are invited to attend dinner in the McDonald Student Center Cafeteria at 6 p.m. Students' dinners have been covered by the Orientation fee, parents may pay \$6.95 at the door. Monsignor Mouch, president of Saint Leo College, will offer welcoming remarks to the Class of 1994 following dinner.

Parents will want to plan on leaving campus following the welcoming address. Students will begin their first Academic Orientation activities immediately after Monsignor's remarks.



ROBERT RUDAY

## A greeting from the Vice President for Student Affairs

Dear New Students:

Welcome to Saint Leo College. You may not believe this, but you are entering college at one of the easier stages in life. There will be times when you think your experiences at college are difficult. You will have to write papers, solve problems, take lab courses and take what you believe are unreal examinations. You will even be required to attend class! Many of these activities are demanding, but the fact is that you will be able to master the discipline to make these accomplishments a reality.

As you progress as a student, you will receive attention and caring from others. A few of these include your resident advisors and director, faculty advisor, individual faculty members and the staff who work here.

We make no promises to you. We will extend many opportunities to you. You will have the choice of taking advantage of these opportunities.

The first priority for students is to learn and to be educated. In order to remain at Saint Leo College, you must be able to perform in the classroom. In order to prepare yourself for life, you must be able to learn outside of the classroom. Take advantage of the many co-curricular activities and leadership opportunities that Saint Leo has to offer to each of you.

Sincerely,

Robert M. Ruday  
Vice President for Student Affairs



# Inquiring minds want to know

Dear Orientation Leader,

What are the hours for the Snack Bar in the McDonald Student Center?

Signed: Marvin Munchie

Dear Marvin,

The Snack Bar has lots of tasty items for your "snack attacks." During the week from 7:30 a.m. to 11 p.m., the snack bar is open on the lower level of the McDonald Student Center. On weekends, the Snack Bar is open Saturday from 11 a.m. to 11:30 p.m., Sunday from 12 noon to 9 p.m. Hours will be extended when activities are held.

Dear Orientation Leader,

Where can I find out information about getting a job? What types of jobs are there on campus?

Signed: Wanna Job

Dear Wanna Job,

The first step for an on-campus job is at the Financial Aid Office. Most campus jobs are based on financial aid and need and are part of the College Work Study Program, partially funded by the Federal Government. But, if you want to work, find out all of the possibilities and restrictions from the Financial Aid Office.

Dear Orientation Leader,

I understand I can drop and add classes. What are the important dates and other information to keep in mind?

Signed: Full-Time Student

Dear Full-Time Student,

There are some important facts and dates to consider if you indeed drop or add classes. The last day to add classes is Friday, Sept. 7. This is also the last day to drop a class without being charged a fee of \$10.

The last day to drop a class without failure is Thursday, Nov. 1. If you drop a class, please be sure of the consequences. Students who drop below 12 hours will not be full-time students. Full-time students may lose their eligibility for financial aid and may not be eligible to live in the resident halls.

Dear Orientation Leader,

Is there anything to do at Saint Leo at night or on the weekends?

Signed: Suzy Socialite

Dear Suzy,

You betcha!! The College Union Board plans an average of two events per week, clubs and organizations about one. Couple this with all the sports events and club meetings and you may have to budget your time so you can have enough for study.

Dear Orientation Leader,

Do the instructors really spend time with the students? Do they care?

Signed: Shy and Timid

Dear Shy and Timid,

Yes! Yes! Yes! The instructors at Saint Leo College have a com-

mitment to students, and the philosophy of our school is very people orientated. You will find that all the students appreciate the dedication of the staff.

Dear Orientation Leader,

When is the pool open during the academic year?

Signed: Mark Spitz

Dear Mark,

You still do keep in shape after winning all those Olympic gold medals, don't you! The schedule for the pool is as follows:

Weekdays - 10 a.m. sunbathing; swimming 2-6 p.m.

Weekends - 10 a.m. to 6 p.m. - sunbathing and swimming

Dear Orientation Leader,

Where can I rent a refrigerator for my room?

Signed: Penguin Encounter

Dear Penguin,

I have to get over to Sea World to see your new attraction. But, while you are on campus, refrigerators may be rented when you check into your dorm room. Please bring a \$10 deposit with you.

Dear Orientation Leader,

Can you tell me who is in charge of Campus Ministry and where are they located?

Signed: Wanting to be an involved Christian

Dear Involved,

The Campus Ministry is headed up by Sister Geraldine Warthling, O.S.F., and Father Leo Schlosser, O.S.B., is the campus minister. The offices are located in St. Edward Hall. You have an open invitation to visit - bring a friend!!

Dear Orientation Leader,

When do grade advisories come out during the semester? What happens to them? Where do they go?

Signed: Studious

Dear Studious,

All unsatisfactory mid-semester grades are known as advisory grades. The faculty submits advisory grades to the Records Office at midterm (Oct. 22 this semester). These advisories are sent to your home address, so your parents will know if you are indeed studious.

Dear Orientation Leader,

I am a transfer student. May I pledge a Greek organization during my first semester?

Signed Jimmy The Greek

Dear Jimmy The Greek,

Transfer students may pledge if they have at least 12 transferable credits and a grade point average of at least 2.0. First semester freshmen or transfers with less than 12 credits are not eligible to pledge a social Greek organization.



Moving into your residence hall room is a time-consuming task. If you'll just unpack the essentials the first day, you'll allow yourself time to decorate at leisure. You're sure to find a lot of innovative ideas just down the hall.

## RESIDENCE LIFE

# Notes to Note

### WHAT ARE THE VISITATION HOURS FOR THE RESIDENCE HALLS?

Visitation hours are Monday through Thursday, 9 a.m. to midnight; Friday, 9 a.m. to 2 a.m.; Saturday, 10 a.m. to 2 a.m.; and Sunday, 10 a.m. to midnight. Male guests to Marmion and Priory Halls must sign in at the halls front desk and leave an ID card. There is 24-hour visitation in the Marmion/Snyder Lounge. Visitation outside of these hours is a violation of Residence Hall policy. Compliance with all policies is essential and expected. Violating the visitation policy will result in a discipline conference with a Residence Hall staff member. Sanctions depend upon circumstances and could range from a warning to probation or completion of a task. A repeated violation will result in more severe sanctions, including removal from the residence halls.

### IF I HAVE A PROBLEM WITH MY ROOMMATE OR ROOM, WHAT SHOULD I DO?

If you have a problem with your room, you should talk to your Resident Assistant. If maintenance is required, they will refer the problem to the maintenance staff. If you are unhappy with some aspect of your room, your RA can help you resolve the problem, or advise you about the room change process.

If you have a problem with your roommate, the person you should talk with is your roommate. Most concerns and difficulties can be resolved by talking openly and honestly with each other. Most

problems that do occur or persist result from not enough communication between roommates. If you have a concern, talk to your roommate. They may not be aware of your concern. Don't leave each other notes. Communicate face to face. It's harder, but more personal and you can state your feelings concisely and clearly. Talk about how their actions make you feel, but don't criticize them. Think about how you would like to be told something. Most important, listen to your roommate. A successful roommate relationship depends on cooperation, consideration, respect and compromise.

If you still have problems, talk to your RA. They can help you come up with solutions, or can even serve as a moderator. The worst thing you can do is not to talk to anyone about the problem, especially your roommate.

### HOW DO I PICK UP MY PACKAGES THAT I SENT TO THE SCHOOL BEFORE I ARRIVED?

Contact your RA about times to claim your packages. Residents of Henderson and Benoit can pick up their packages in the storage area located in each building. Roderick residents can pick up their packages in Benoit. St. Edward students need to go to the lobby area of St. Edward during the designated times. Residents of Villa, Priory, Marmion and Snyder should go to the Marmion/Snyder front desk for the exact location of their stored packages. Packages can only be retrieved during designated times. These times will be posted, and are also available from your RA.



# Home away from home

The Office of Residential Life welcomes you to Saint Leo College and to our residence community! In the coming months, you will experience many new opportunities for learning, both in the classroom and your residence hall. You will be challenged with new roles and responsibilities and will discover much about yourself in the process.

The Residential Life staff is here to help you through the changes and difficult times that can be a part of any new experience.

As a new resident, or even as a veteran resident, you probably have many questions regarding your residence community and the campus. The information in this article will, hopefully, answer some of your most immediate questions, and the hall staff and other members of the College community will gladly help you with the rest.

## WHO'S WHO

First of all, an RA, short for Resident Assistant, is a full-time student who lives on your floor. This person is a trained staff member who is interested in

working with other students. The RA assists you if you have maintenance problems, plans social activities, explains and enforces College policies and regulations, and is there to listen to any other problems you may have... just to mention a few of their areas of expertise.

A Resident Director is also someone who lives in the residence hall. This person is a professional staff member who is responsible for the overall operation of your hall and supervises the Resident Assistant staff. Your Resident Director is interested in meeting you and working with you.

Finally, the custodial staff is that hard-working group who help keep your bathrooms and buildings clean. You are responsible for the care of the rest of your living quarters. It is important to cooperate with them and thank them for doing a good job.

## WHAT DO I NEED TO BRING?

When planning what to bring with you, it is important to keep in mind that you will be sharing a room with someone else. It is a good idea to contact your room-

mate and decide who is bringing what (stereos, televisions, refrigerators, etc.).

The only cooking appliance permitted in Saint Leo College Residence Halls is a microwave oven. Coffee makers, hot pots, toaster ovens and other cooking appliances are not permitted. You may have a refrigerator up to 4.5 cubic feet; 2.5 cubic foot refrigerators can be rented through the business office.

You will also need to bring linens with you. Sheets, towels, pillowcases, pillows, washcloths and other linen items are not provided.

If you decide you would rather wait until you arrive to purchase any of these items, just ask your Orientation Leader where the best shopping is located!

An item that you need to leave at home is your favorite pet (unless your pet happens to be a fish). Although we want you to feel at home, it really isn't fair to the animal or other community residents. Besides, we have a deal with Busch Gardens—we don't house animals and they don't house people. Feel free, however, to bring as many stuffed animals as you would like.

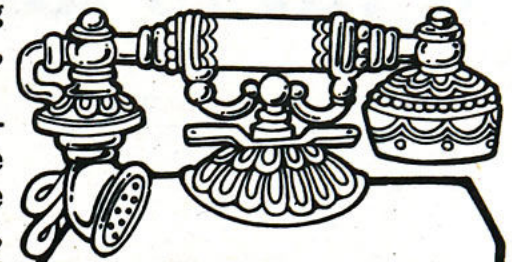
## ROOMMATES...

For most of you, living with a roommate is going to be a new and exciting experience. It can be the start of a great friendship if you want it to be. A roommate is someone you can laugh, study, ask for advice, go shopping and gab with. Also, family may be far away, and a roommate is someone who can often take your mind off being a little homesick. (You may try talking to him/her about it. Many times he/she is in the same boat you are!)

In order for a roommate experience to be positive, you may need to explain your needs and expectations. That person will, in turn, need to do the same. Too often you may assume that your needs are the same as your roommates' concerning privacy, study time, borrowing clothes, boy-friends/girlfriends, etc. By confronting these concerns in the beginning, you will learn each other's limits and avoid many conflicts. But remember, like any other relationship, it is not always going to be rosy. You will have to work together to make it as good as it can be.

## YOUR ROOM...

Another mutual decision you and your roommate will have to reach is how to decorate your room. We encourage you to per-



## PHONES

Each room is equipped with a phone jack that gives you access to the campus phone system. You will need to bring your own phone. In order to make long distance calls, you will need to apply for an access code. You can pick up more information about long distance access codes in the Campus Store.

sonalize your room so that you feel comfortable. Put up posters, coordinate your curtains and bedspread - the possibilities are truly endless.

## SAFETY AND SECURITY

### ...A JOINT RESPONSIBILITY

Although the Residential Life staff strives to develop a community environment in the halls, it is important that you always lock your room door (even when you're home or just down the hall). Your safety and security is extremely important to us, but this is a responsibility all members of the community must share. Please remember to carry your keys with you at all times!

## WHAT IF...?

You're not sure where to do your laundry? You aren't clear about visitation rules? You need to see the RD and can't seem to find him/her? Ask any member of the Residential Life staff. If they don't know the answer, they are trained to find someone who does!

## ARRIVAL

We are very excited about your pending arrival on campus! Check-in day is bound to be hot, so be prepared. You may be moving your items up or down stairs, so dress comfortably.

You will have plenty of time to unpack. Don't try to do it all on the first day! Become comfortable with you surroundings, get to know your roommate, your RA and your floor neighbors. And most of all—Relax! Enjoy everything that Orientation has to offer, and get ready to have a great year!

See you in the halls,  
The Saint Leo College  
Residential Life Staff



Finding time to relax during the semester is not easy once classes have begun. Here, two students try to relax by playing a little one on one. What better way to meet people and make new friends.



## AN IRREVERENT GUIDE

# Language you can't live without



**A. Academic Probation:** If your cumulative grade point average falls below a certain level. It's something you don't want to be on, check the catalog.

**Academic Year:** Period including fall and spring semesters.

**Advising:** Process of academic information-giving and/or advising offered by various academic divisions. The process by which you learn that you won't be able to register for upper division courses without first completing your lower division requirements.

**Audit:** Taking a course for no credit—for the fun of it!

**All-Nighter:** When your documented essay is due tomorrow, and you've only got your name written down.

**B. Blue Book:** Little blue book with lots of blank pages you use to take an essay exam.

**Bowl:** As in The Bowl. Grassy area located behind the McDonald Student Center and bordered by Clear Lake. It is a great place for bands to perform!

**Burnout:** A state of mental and physical fatigue brought on by an all-nighter, combined with the most difficult exam you've ever taken.

**C. Cage:** As in The Cage. Area in the lower level of McDonald Student Center with the Snack Bar, games and entertainment every Wednesday night.

**Care Package:** Cookies that your mother sends that your roommate eats.

**Circle:** As in The Circle. Round grassy area in the middle of the parking lot outside Benoit, Roderick and Henderson. It's a great place to throw a Frisbee and park your car if you want to get towed!

**Class:** Regularly scheduled meeting of an academic course. Unfortunately, attendance is not an option. To pass a class, you must show up.

**CLAST:** College Level Academic Skills Test—All sophomores take this test during their second semester. You need to pass it to graduate.

**College Union Board:** A student-run programming board responsible for planning campus entertainment. A group of very fun people.

**Counseling:** When you have just broken up with your girlfriend or don't know what you want to do with your life, check out the counseling services.

**Credit Hour:** The unit of credit is a semester hour defined as 50 minutes of class time. An average class load per semester would be 15 hours (or about five classes).

**Cum GPA:** Grade Point Average, a cumulative average of all the grades received from courses taken.

**Curriculum:** A specific set of courses required to achieve a degree.

**D. Daily Say-So:** Daily publication from the Student Development office that lists scheduled meetings and activities. It is posted on the walls of administrative and academic buildings. It's official graffiti!

**Degree:** The title given as official recognition of completion of a curriculum. A Bachelor's degree is usually what you achieve first.

**Drop-Add:** Process by which you can change your schedule free of charge. Last day to add a course is Friday, Sept. 9. Last day to drop a course without a \$10 charge is also Sept. 9.

**E. Elective:** A course you can take that isn't required by your curriculum.

**F. Final Exam:** Test given at the end of a course, usually covering all the material taught during the course. This one usually makes or breaks you.

**Freshman Exit Exam:** A test you must take during your second semester as a freshman. You must pass it to become a sophomore.

**G. Graduation:** Something that seems to take so long to get here but always comes too soon.

**Greeks:** Persons who belong to a fraternity or sorority named with Greek letters.

**GJ's:** The College's remedy for the midnight munchies—pizza!

**H. Highlighter:** The reason your used school books have all those yellow lines through them.

**I. IFC:** InterFraternity Council, the governing body for fratern-

nities on campus.

**Intramurals:** Recreational sporting competition open to all students. The office is in the Marion Bowman Activities Center.

**K. Kent Chapel:** The regular location of Campus Ministry Mass, located immediately outside the McDonald Cafeteria entrance.

**L. Leadership '90:** Select group of freshmen and sophomores who participate in a seminar for emerging leaders.

**M. Major:** The field of academic study you might change at least seven times during your college career.

**Mall:** Long grassy strip in between Saint Edward Hall and Saint Francis Hall.

**Midnight Munchies:** A highly contagious collegiate disease which usually strikes after "Late Night with David Letterman." It is the leading cause of the "freshmen ten." (For remedy, see GJ's.)

**Midterms:** A period in the semester when your stress level increases immensely.

**Minor:** The field of second academic emphasis or someone who can't get into bars. Also

the Director of Residential Life—Frankie Minor.

**Monarch:** Student newspaper at SLC. Look for it at newsstands on campus!

**P. Panhellenic Council:** The governing body for sororities on campus.

**S. Saint Leo College Ambassadors:** A select group that works with the Special Assistant to the President as the official hosts and hostesses of the College.

**SGA:** The Student Government Association is the student governing body that works and offers special programs for you, the student. A great way to get involved!

**Syllabus:** Schedule of homework and reading assignments.

**T. TBA:** (It's not a building.) This abbreviation usually indicates a class that is To Be Announced.

**Transcript:** A summary document of your college academic course work and performance. That is to a job interview what a criminal record is to a parole board.

**Tuition:** Monies required to register for classes.



New students gather together to get acquainted during Orientation Week. No matter how nervous you are, it's not hard to make new friends. Before you know it, you'll feel right at home.



**BASIC TRAINING 1990**

- Develop your Leadership style and skills in this FALL Seminar. Learn now to:
- Organize your time and tasks
  - Lead an organization
  - Be effectively assertive
  - Tap your creative powers
  - Communicate with others
  - Take the initiative
  - Be persuasive
  - Get results

Be a LEADER !!

For information contact :

**Bob Campbell**

Student Development Office  
McDonald Student Center  
(904) 588-8358

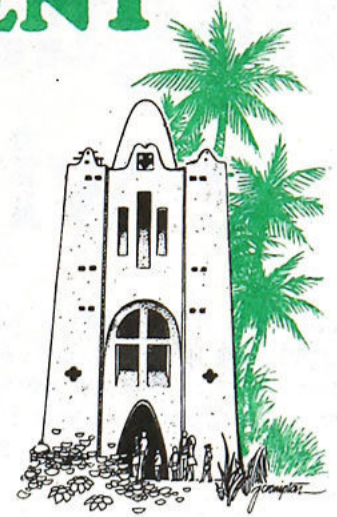
# THE DARK CONTINENT



**ADVENTURE ISLAND™**

# BUSCH GARDENS®

TAMPA, FLORIDA



## INTEREST INVENTORY

Do you have any experience or interest in becoming involved in activities? If so, please check off those of interest to you and return to:

**Judicial Organizations**

- Campus Court
- Residence Hall Judicial Board

**Academic, Cultural & Professional Organizations**

- American Marketing Association
- Alpha Xi Omega
- Amnesty International
- Army ROTC
- Art Club
- Council for Exceptional Children
- Delta Epsilon National Honor Society
- Interdisciplinary Forum
- Hotel Sales and Marketing Association
- Phi Tau Omega / Alpha Sigma
- Psychology Club
- Saint Leo College Ambassadors
- Saint Leo College Chorale
- Saint Leo College International Students Association
- Senior, Junior, Sophomore and Freshman Classes
- The Young Republicans

**Robert M. Ruday, P.O. Box 2156, Saint Leo, Fl. 33574**

**Residence Hall Governments**

- Henderson/Roderick/Benoit Hall Government
- Marmion/Snyder/Villa/Priory Hall Government
- Saint Edward Hall Government

**Greek Organizations**

- Alpha Omicron Pi National Sorority
- Alpha Phi Alpha National Fraternity
- Interfraternity Council
- Kappa Alpha National Fraternity
- Panhellenic Council
- Phi Kappa Sigma National Fraternity
- Phi Sigma Kappa National Fraternity
- Sigma Alpha Epsilon National Fraternity
- Sigma Pi National Fraternity
- Sigma Phi Epsilon National Fraternity
- Sigma Sigma Sigma National Sorority
- Tau Kappa Epsilon National Fraternity

**Service Organizations**

- Campus Ministry
- Circle K
- Golden Legend (yearbook)
- Monarch (newspaper)
- The Magazine (literary magazine)

**All-Campus Organizations**

- Student Government Association (SGA)
- College Union Board (CUB)

NAME (Please Print)

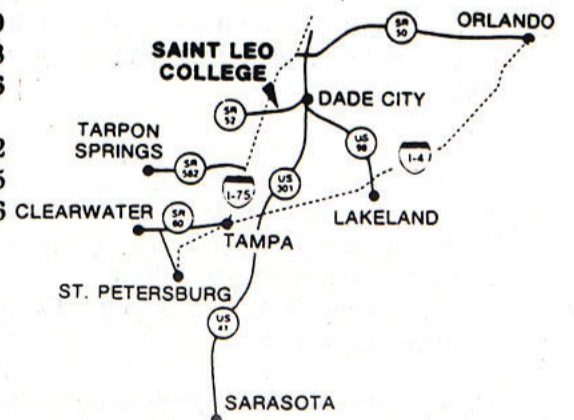
ADDRESS

CITY

STATE

ZIP

<b>FREQUENTLY CALLED NUMBERS</b>	<b>General Campus Information</b> (904) 588-8200	<b>Financial Aid</b> 588-8270
	<b>President's Office</b> 588-8241	<b>Institutional Advancement</b> 588-8248
	<b>Academic Affairs</b> 588-8244	<b>Military Education</b> 588-8206
	<b>Admissions Office</b> 588-8283	<b>Office of the Special Assistant to the President</b> 588-8252
	<b>Alumni Relations</b> 588-8250	<b>Registrar</b> 588-8235
	<b>Athletics</b> 588-8221	<b>Student Affairs</b> 588-8266
	<b>Daniel A. Cannon Memorial Library</b> 588-8258	
	<b>Educational Services</b> 588-8236	



**SAINT LEO COLLEGE**  
P.O. BOX 4010  
SAINT LEO, FL 33574

Non-Profit Organization  
U.S. Postage  
**PAID**  
PERMIT #2  
Saint Leo, Fl 33576

