



The Monarch



Volume 8, Number 6

Saint Leo College, Saint Leo Florida

November 13, 1981

Dr. James Horgan To Take Sabbatical Leave



Dr. James Horgan

By Mary Ann DeMeo
News Editor

Dr. James Horgan, the Chairman of the Saint Leo College Division of Social Science, will take a sabbatical leave next semester. In his stead as the Chairman for next semester, will be Dr. Bernard Parker.

A sabbatical leave for college professors occurs once every seven years. After seven years is up, the professor can take either a semester or a whole year off to study and/or do research. It serves to give the professor a chance to study his/her particular interests.

In 1972-1973, Dr. Horgan spent the year in California researching and studying the United Farm Workers, lead by Cesar Chavez. He was able to take this sabbatical leave because he came to Saint Leo College in 1965 and by 1972 he had been here for seven years. The United Farm

Workers was organized by Mr. Chavez to improve the wages and conditions of the migrant workers, who move from one place to another harvesting the grapes and lettuce etc. In the West, the Chicanos (Mexican-Americans) have a heavy population, as blacks are for the Eastern part of the United States, and they make up part of the United Farm Workers. However, the United Farm Workers embrace many ethnic groups, especially those groups in the migrant farm worker population.

Dr. Horgan wants to write articles about his experience with the United Farm Workers. He wishes to explain the purpose, goals, and accomplishments of this organization. He will also research the Civil Rights Act of 1965. He particularly wants to focus on the literacy tests for voting. The Civil Rights Act of 1965 is up for renewal this year and there is some doubt that it can pass the Senate. The House has already passed it. This Act, sometimes called the Voting Rights of 1965, outlawed literacy tests for voting because voting had nothing to do with literacy. These literacy tests for voting were aimed at blacks particularly in the South. Often, since the literacy tests were written by whites for whites, blacks used to fail it. As a result, there were very few blacks who could vote in the South. If the Act is not renewed, the states may again pass literacy tests, and will restrict blacks from voting. (By the way, this has nothing to do with Florida's Functional Literacy Tests)

Dr. Horgan was supposed to take his sabbatical leave last year. However, it was postponed because the college was in the middle of its ten year self-study and Dr. Horgan was the editor of this book, which compiled information obtained from various departments.

The above information proves Dr. Horgan's interest in social movements of the United States because the Civil Rights Act of 1965 is one of the hottest social issues of our time. In addition, The United Farm Workers is an example of people working to improve the conditions in which they live.

The College Experience Topic On "Kaleidoscope"

By Joy Shepard

The adjustment to college life, homesickness, confusion, roommates, career planning, personal growth and interest testing are all among the unlimited subjects covered with students by TIMOTHY G. WISE, Director of Counseling and Career Development at Saint Leo College and were the topic of discussion on the November 15 "Kaleidoscope" program. Airing over Channel 13, WTVT, the program is moderated by Charles Hampton, Director of Public Service.

The 24-year old Wise, while completing his Master's degree last year, interned as a guidance counselor at Amos P. Godby High in Tallahassee, was a research consultant for the Human Services and Studies Department at Florida State

and interned as a counselor at Apalachee Community Mental Health, Adult Service Unit, while also working as a pharmacy clerk.

He holds a Master of Science degree in Counseling and Human Systems and a Bachelor of Arts degree in Psychology, both from Florida State University, where he was a recipient of the Southern Scholarship Foundation and was named "Outstanding Senior Bandman."

Wise, who was accompanied by a member of the Residential Hall staff, discussed the importance of having a counselor and of students taking advantage of the numerous services available to them through a counseling center.

Bike-A-Thon For Cystic Fibrosis Scheduled By Circle K Of Saint Leo College

By Joy Shepard

Ingrid T. Forbes, a junior at Saint Leo College from Kingston, Jamaica, was named Chairman of the Cystic Fibrosis Bike-A-Thon Committee on October 30, 1981, by Mrs. Nester, chairman of the Florida Chapter Cystic Fibrosis Foundation.

This year's Bike-A-Thon is scheduled for Saturday, November 21, 1981. Beginning at 9 a.m. in front of the Saint Leo Women's Residence Hall known as "Villa" on Wicher Road across from Holy Name Priory. Registration will open at 8 a.m. that morning.

Participation in the Bike-A-Thon is open to anyone who is 11 years of age or above. Each biker will be assigned a sponsor sheet and will collect donations per mile from each sponsor with all proceeds being donated to Cystic Fibrosis.

Bike-A-Thons are conducted by the Cystic Fibrosis Foundation on behalf of hundreds of children in Florida who suffer from the hereditary disease. As yet incurable, it is a

respiratory and digestive disease which is inherited when both parents carry the recessive gene for Cystic Fibrosis. One of every twenty persons in the United States is a carrier, usually without knowing it.

All children with cystic fibrosis are eligible for treatment at any of the six centers in Florida affiliated with the Cystic Fibrosis Foundation. The six Florida centers are: Shands Teaching Hospital in Gainesville, Baptist Memorial Hospital in Jacksonville, University of Miami School of Medicine, Florida Hospital in Orlando, All Children's Hospital in St. Petersburg, and Sacred Heart Hospital in Pensacola.

Prizes will be awarded to the riders who collect the most money for cystic fibrosis. In addition, T-shirts will be given to every rider who turns in at least \$25.

Sponsor sheets are available from Circle K members at Saint Leo College or by calling Ingrid Forbes at 904-588-9938.

SAT Scores Remain Steady After Declining For 18 Years

For the first time in almost two decades, the scores earned by high school seniors on the Scholastic Aptitude Tests did not go down. Last year's statistics were released by the College Board, sponsors of the tests, and they received wide publicity because the long-term decline has been a source of great concern for educators. It is impossible to tell whether the 1981 statistics represent a reversal of the trend or simply a pause in a decline that will be resumed in future years.

For high school seniors who intended to go to college, the average SAT scores in 1981 were 424 on the verbal section and 466 on the math section. When the decline in scores began in 1963, the average verbal score was 478 and the average math score was 502. The SATs are scored on a scale that goes from 200 to 800.

The decline in scores had leveled off since 1975, when the scores fell sharply. This may indicate that this year's results are indicators of a long-term trend towards ending the decline.

The Scholastic Aptitude Tests are taken by about 1.5 million students each year. Male students continued to get higher scores than females.



Men earned an average score of 430 on the verbal and 492 on the math portions of the exam, while the scores for women were 418 and 443.

The scores among men in 1981 increased by two points in math and one point on the verbal part of the test. Verbal scores for women declined by two points but remained the same in math.

The significance of the new scores is not entirely clear because the decline has never been fully understood. Some educators and researchers have believed that the decline represented a weakening of educational programs. Others have explained them in terms of the mixture of students taking the exam and intending to go on to college. It is inevitable, however, that some educators will point to the new statistics as evidence for the claim that new programs in the schools are working.

Sorority Presidents Are Threatened By Sig Ep Kidnappers

The Sig Ep gang has recently escaped from Central Florida prison. They are armed and considered dangerous. The gang was last seen driving in a brown Cadillac, heading in the direction of Saint Leo College.

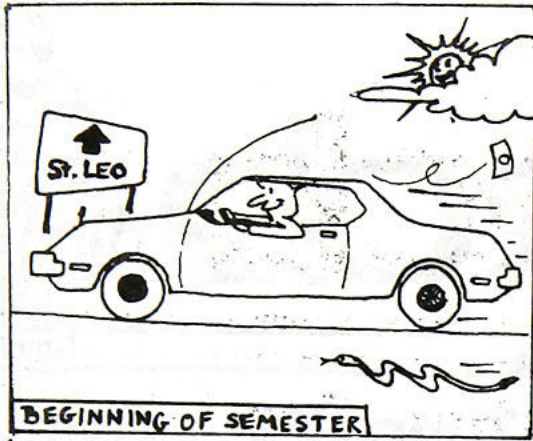
The gang in the past was noted for capturing Sorority Presidents and holding them for ransom. Ransom is collection of two cans of food, per

sister and pledge, in each sorority.

Jody Luhn president of Sigma Phi Epsilon feels Saint Leo College is prepared for the attack. "We have hired four highly qualified men to protect our sorority presidents."

So remember Sorority Presidents, if you see a brown cadillac cruising the campus, RUN! Because they are after you.

Leo's
By
Thomas Iraheta



Wise Up
By **Tim Wise**

There have been occasions when people have approached me to tell me about a friend of theirs who is having a lot of problems. Many times the person wants to know how to HELP their friend. I wish to speak today on the subject of helping a friend who is experiencing problems in life.

We all have difficulties in dealing with the situations found in life. Sometimes our problems are relatively simple such as trying to decide what clothes to wear to class. Other times our problems are much more complex and overwhelming, such as problem drinking or a problem pregnancy.

When these problems develop, we tend to turn to someone for help. That someone is usually a close friend. It is our nature to seek help from others. It also seems to be our nature to be supportive of those who are suffering.

How to be helpful to our friends is often a difficult issue. Many times our friends look to us to lend our ears and listen. Being heard by another is often enough for some people. Sometimes, however, we hear problems which we, as friends, feel incapable of handling.

It behooves us to know what to tell a friend who confides in us the fact that they harbor a drinking or drug

addiction, an unwarranted pregnancy, or a past abortion for which they still feel guilty. Or, perhaps they have not told you they have a problem, but you fear that they do indeed have such a problem.

So, how can you help? First, reassure your friend that you are their friend and that you want to help. If the person is not aware they have a problem, then gently try to point out the areas you are concerned about.

Always listen--don't get wrapped up in pseudo-psychological lingo. Instead, talk with your friend as a person, not a mini-psychologist.

If you believe your friend's problem is a difficult one and one you know you don't know how to deal with, then be a good friend--refer them to trained professional who is qualified to offer good counsel. Should you decide to suggest that someone get help, send them to me first. I am here to be of service to you and your friends no matter how large or small the concern.

Through helping one another, life takes on greater meaning!

Take care & enjoy life,

Tim Wise

*(Tim Wise is the Director of Counseling here at Saint Leo College).

LOOKING FOR A JOB?

Openings Available In Advertising Management.

- Commission With Opportunity For Bonus
- Car to Provide Own Transportation A Must
- Excellent Experience For Business Majors But All Majors Accepted

We need your talents & energy!

For Interview Enquire at Student Affairs Office, Monarch Office, or Office of Dr. Ernie Williams

CANDY STRIPER
2219 Hwy. 301 South—567-6090
Dade City, FL 33525
Hours 10-5

Ronita Flower Shop

Specialists In Weddings Decorations Funeral Designs

Mrs. Jewell Hattaway
567-6795
430 N. Seventh St. Dade City, Fla.

- Jeans:**
- Serigio Valente [Men & Ladies]...\$32.00
 - Jordace [Men & Ladies] \$34.00 sz. 26-36
 - Calvin Klein \$30.00 sz. 3-13
 - Gloria Vanderbilt \$36.00 sz. 26-36
 - Sasson \$32.00 sz. 27-32
 - Lee & Levi for Gals \$29.00 sz. 3-16

Monarch Ads YOU'D BE SURPRISED AT WHO READS THEM!

Inquire About Our Rates!

Columns

Discovery and Awareness

By George Gano
Guest Contributor

Religious Competition

Schools and churches are not very important things when one is thirteen years-old. Collecting baseball cards and making the football team, going on a Boy Scout trip and exchanging secrets, are important.

When Paul celebrated his sixteenth birthday, only the guys were invited to the party. The main thing I remember about the party is the smell of chicken. Paul's mother could cook the best smelling chicken.

The party was on Friday and in those days Catholics did not eat meat on Fridays. Being the martyr I was, I abstained. Paul accepted my belief with an open mind. During the birthday party, I was aware for the first time that religion divided Paul and me. I did not like the idea of division. Paul and I were such good pals that I did not want to think I was better because I did not eat meat on Fridays and he did. I was confused.

My confession was cleared the following Sunday at church. Father Powers who was visiting that Sunday, celebrated mass. In his sermon he spoke about respect for other Christian's beliefs and doctrines. He pointed out that no one possesses all truth.

After reflecting on Father Power's sermon, I realized no one religion possesses all the truth but all Christian Religions are possessed by the truth. This cleaned up my confusion about Paul and myself. Paul and I are Christians following different doctrines and paths. I am positive, however, that someday our paths will converge at the Kingdom of God.

Christianity in America has evolved into a competitive business in which churches compete for superiority of doctrine over one another. In Christianity today, the moral majority and fundamentalist groups consistently claim superiority or doctrine over other faiths. According to Galatians 3:28, "There is neither Jew nor Greek, there is neither slave nor free, there is neither male nor female; for you are all one in Christ Jesus." Religion is not a race to determine who accumulates the most points and thus wins. There are instead, many different paths to God's Heavenly Kingdom. All oaths lead there. All paths contain stones that require crossing. There is no single path that is better than another.

When I was growing up there was no superiority of doctrine in my neighborhood. My friend, Paul, lived right across the street from me.

He was Protestant and I was Catholic. We did everything together. We played football, rode bikes, exchanged secrets, and spent hours goofing off.

I never minded the fact that when we rode to school in the morning he would park his bike in front of the East End school and I would park mine in front of Saint Joseph's. East End was his school and Saint Joseph's was mine. The only difference between the schools was that one was across the street from the other.

I never minded the fact that I was an altar boy and Paul had no interest in being one. He went to a different church and believed a different doctrine.

Sigma Phi Epsilon



Greek Corner

By Michelle Dodds

Being the youngest and the only national fraternity on this campus, Sigma Phi Epsilon has already made a name for itself. It became a chapter here on March 28, 1981, according to its President, Jody Luhn. It was formed by a group of guys who wanted to be part of a national organization and who felt that the hazing that goes on in the fraternities was just not for them. They shopped around for the fraternity that offered them the most, and when Ray Ackerman, a regional director for Sig Ep, came through the area, they decided that this would be the one. There were, however, many steps to fulfill before becoming a chapter.

The first thing they had to do was to fulfill the requirements for the campus, then form a colony. This colony then had to have a petition, which included a history of the college and its fraternities, and sororities. Then they had to get at least 20 guys to pay \$125.00 for national dues and \$20 a month to provide for expenses. Then, they had their Installation Banquet, where Jody became the first member of SigEp on this campus.

To become a member of this organization, you must go through 9 weeks of pledging. During this time you go to a brother development course every week. Here, you learn how to become the best brother you can be. You also learn the history of the fraternity, its rules, the creed, songs, and other things included in the Sigma Phi Epsilon Guide To Brotherhood Development. You

must also wear a pledge pin over your heart and wear an appropriately colored shirt.

Why go through all this? According to Sig Ep, it is fun, and once you become a brother, you are one forever. Being a brother also includes many benefits. One of them is being a part of the second largest national fraternity, and the third in quality. It is also well established, being it was founded in 1901. You also become fellow brother with Carroll O'Conner, J.C. Snead, Christopher J. George, and Willard D. Voit, who when he recently died, left \$25,000 for the national fraternity. Being a brother of Sigma Phi Epsilon also looks good on a resume. You can also get loan for 4 percent interest. They even have an Alumni House Holding Corporation, for when they want to build or buy a house. Besides all this, you get to participate in all their social events, service projects, sports events, and possibly in one of their national or regional conventions. They also work with the brothers of other Sig Ep fraternities. They are always welcome and made at home at any Sig Ep house in the nation, which is noted for its red door, (located at the Grove House, on our campus.)

Sigma Phi Epsilon, then, has accomplished a great deal in a short time. It is the youngest, yet largest fraternity on campus. College Survey Bureau of National Fraternities, ranks them #1 out of 1 on this campus. The list goes on and it is clear that this fraternity has really made a name for itself.

The Fast Lane

By Dan Maguire

How To Decide On A Major

One of the most important decisions a college student must face is choosing his or her major. The ramifications of this choice are far-reaching and critical to the future of most undergraduates. Perhaps no other single action is more significant for those of us who represent America's tomorrow.

Obviously the magnitude of this decision requires that it be approached with foresight and the utmost care.

In an effort to aid the student, who may be lost in a jungle of aptitude tests, advisor recommendations, and parental pressure, I have devised a couple of methods to be utilized in determining one's field of study.

The most accurate of these is called the "library" method. Follow the steps as I have listed them and you can be sure that the choice you make as a result will never be regretted. First, go to the library. If you don't know where it is, ask someone. When you get there check out equal amounts of literature on all the subjects that interest you. Separate the material according to topic and place each batch into its own box. Then mail each box to a different friend, preferably friends outside the state. Include with every box a note asking that it be returned as soon as possible. The box that makes the fastest round trip is your choice. If two or more boxes arrive on the same

day then pick the one that has traveled the farthest. Don't forget to return all materials to the library where as it is likely that this will be a very popular method.

For the athletically inclined I suggest the "long-jump" method. While it's not as accurate as the library method, it is considerably less expensive. To begin write down any possible majors, that you feel you could get through, on separate pieces of paper. Next tape them down to the floor somewhere making sure they spread out without being more than three feet from each other. After all that, position yourself some four to five feet from the center of your selections. Then, after blindfolding yourself, spin yourself around for 2-3 minutes. as soon as you stop spinning jump onto your future. If you miss all of the possible choices, or if you manage to get your right foot on one and your left foot on another, then keep trying until you get it right.

If the above methods are not scientific enough for you then I recommend a visit to a palm reader or some other traditional approach. If the palm reader is to your liking be sure to clean off any notes that may be left over from your last test.

In future columns I will consider some unique and possibly off-the-wall procedures that I am currently working on.

Get To Know Us

By Erna Mae Tonge

Antigua

ANTIGUA (pronounced An-tee-ga) is an island of 108 square miles set in the Caribbean Sea forming one of the islands of the Eastern Caribbean. Antigua's romantic history began with its discovery in 1493 by Christopher Columbus who named it Santa Maria la Antigua for a church in Seville Spain. The island was a much fought for prize between Spain, France and England and except for a brief occupancy by the French it has remained British.

Antigua, which is partly volcanic and partly coral, is surrounded by superb white sand beaches which are almost entirely reef-protected. It is an ideal place for swimming, shorkelling and all forms of water sports - all year round.

The island's population is 75,000 with approximately 30,000 living in St. John's, the capital. St John's is a neatly laid out, small city, within a reasonable distance of all points of interest on the island.

The national sport of the island is Cricket (in keeping with its British background) and soccer, basketball and netball are also very popular. Carnival is the biggest festival and is held during the summer. It is a week of shows, dances, music and lots of fun.

Antigua has been an Independent State in Association with Great Britain Since 1967; this gave the government of the island complete control over its internal affairs while Britain maintained responsibility for its external affairs and defense. The

first of November marked the end of British rule for the twin-island state of Antigua and Barbuda. This was the day when the islands obtained complete independence.

The Antiguan's here at St. Leo College are asking for your prayers as their island takes this big step forward.

This article is the first of a series which is designed to familiarise the College Community with the countries of the International Students who are studying here. Next issue GET TO KNOW US-ARUBA.

From The Nurse

Hi,
Let's talk about medical services provided in the Dade City area. This does pertain to you as you may find yourself needing a dentist, ophthalmologist, gynecologist, optician, or just a doctor.

Most of you know Dr. Marcellino Oliva, D.O., is the college physician. He accepts St. Leo students when referred by the Health Center anytime on Monday through Friday from 9:00 A.M. to noon and from 1:30 P.M. to 5:00 P.M. and on Saturdays from 9:00 A.M. to noon at his Dade City Osteopathic Clinic.

For a medical emergency, Community General Hospital and East Pasco Medical Center's emergency rooms will accept and treat St. Leo students.

Please remember, it is your responsibility to make sure the insurance claim forms are filled out when you see a doctor and mailed to the insurance company.

If you need an appointment to see a dentist, have your eyes examined, or see a doctor, I will be glad to assist you anyway I can.

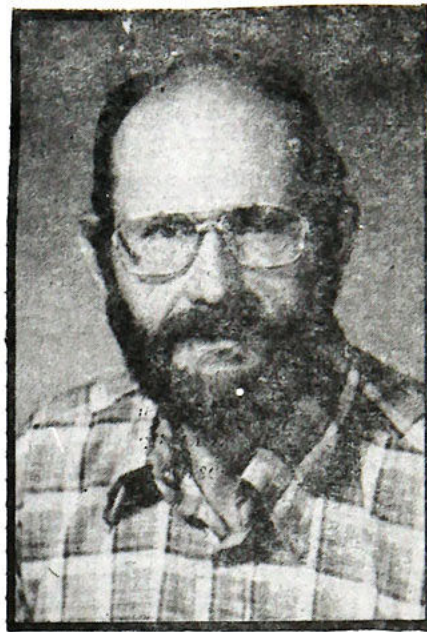
In the meantime, let's try to stay healthy!

See you around,
Charlene

Special Interests

Joseph Geiger:

Man As Artist



Joseph Geiger



By Paul Symonette
Reporter



Rosemary Cash

**Rosemary Cash:
Experienced
Foreign
Travel Student**

By Mary Nahas
Monarch Reporter

Many of us come from different parts of the continent to attend Saint Leo College, but very few of us have crossed the ocean to study abroad like Rosemary Cash did. Rosemary, a December graduate at Saint Leo College with a concentration in theater and a 3.13 grade point average, has proved that ambition is the key to success. It is not where you study, but how you study that makes the difference.

In her freshman and sophomore year, Rosemary was a member of Campus Ministry and also of the Judicial Board. She was elected as a member of Alpha Psi Omega (a national honorary dramatic fraternity). She also worked as a life guard and taught swimming for one semester.

In her junior year, she decided to study abroad in Utrecht, Netherlands, to learn Dutch. She obtained permission to have an independent study program for the months of April and March in which she decided to travel. She traveled by herself with a backpack after she obtained her Eurail pass (train pass to travel throughout Europe.) In those two months, she visited Germany, Denmark, Norway, Sweden, Finland, Switzerland, Bel-

gium, France, Spain, Morocco, and Corsica. You might not believe that she traveled by herself, but her secret was complete control and confidence in the "Man Above." Rosemary went to the Netherlands to learn Dutch, and she learned it well. Her technique to learn a new language is "to learn the basic structure of the grammar, to build your vocabulary, and never stop trying to speak it." "Practice on the mailman or even on the grocer."

Rosemary has lived in Brooksville for almost four years, but she is originally from Buffalo, New York. "Plan your budget carefully and stick to it. Pack light and most of all have a true interest and involvement with the people and culture of the lands you visit," is her advice to people who are planning to travel abroad.

After having learned about carpentry, masonry, and a bit of dairy farming this past summer, she hopes to eventually go into television broadcasting or to work in a Dutch-American company to utilize her bilingual ability. Rosemary admitted, "I learned more in those two months abroad than I ever learned here in three years."

Joseph Geiger is a massive figure both in his burly frame and in the genius expressed from large hands that produce handsome drawing pieces. Man and artist interconnect into one, as in man there is a warm liveliness, playing in his broad, red-bearded face, with it's serene eyes covered by clear spectacles and balding head. Likewise in his movements, there is that gracious, bent, sort of old fashioned gait, as he informs students on art, in an easygoing, raspy tone. It is the sensitivity in these features that brings out the keenness and insight of the artist.

He explains his interest in art with emphasis, tensing hands and voice: "Always, always, even before I entered kindergarten, I wanted to be an artist. It never occurred to me not to, I just had the knack to draw."

Associating himself mainly with pastel painting, graphics, etching and engraving, he has two prints on national tour and one in an international touring show. Next year he plans a presentation at the Kate Skipworth Museum at the University of Mississippi in Oxford, Mississippi. About two years ago he featured drawings of his own and other influencing artists in Selby auditorium before a well-attended lecture. He is also at present engaged in writing a thriller novel.

Geiger found himself active in other fields as diverse as art itself, before even coming to St. Leo college in 1962, a lengthy 19 years ago. He

first entered Stetson University in Deland, Fla., on a football scholarship. He ended up staying there only two years because of the discontinuation of football for a year, by the college. He then transferred to the University of Florida for three years, where he combined his prior two years to obtain the Bachelor of Design Degree.

After college, he joined a professional wrestling team, tossing and getting tossed. He then went off to the Army and was stationed in Europe. There he used his writing and drawing talents as reporter and cartoonist for the "Seventh Corps Jayhawk" and "Stars and Stripes," a newspaper distributed throughout all the army branches in Europe. In 1962, he was back in the U.S., at the University of South Florida where he eventually got his Masters of Fine Arts Degree in Graphics, after taking courses, summer after summer.

Finally, he settled in at Saint Leo College, as art teacher, and has been working this position ever since. About the time of his arrival to Saint Leo College, he married Mrs. Liona Geiger, an English professor also at the college. They have two children, Norman, 18, who enrolled as a freshman in September and Kaarla, 11. The family resides in Dade City.

With Geiger and his wife Liona jogging a good, five miles per day, this should keep him in healthy attitude, mind, and body, with a skilled, steady hand on the pencil.

**Auditions Held
For Upcoming
Musical Grease**



By Mary Ann Demeo
News Editor

As one walked into the Saint Leo College Theatre on the evening's of November second and third, it was like walking back into the 1950's. The reason? The Saint Leo College Theatre held its auditions for the upcoming musical, "Grease". The musical, which will be under the direction of Dr. David Golden, will open on February 9th, and run until February 12th.

Those who auditioned were required to do a monologue, sing, and dance, in able to prove their eligibility for one of the 25 parts offered in the musical. The selections for the cast of "Grease" are:

- | | |
|-------------------|--------------------|
| Miss Lynch- | Anna Gimenez |
| Patty Simcox- | Patricia Broderick |
| Eugene Florczyk- | Bruce Resnik |
| Jan- | Wendy DeDou |
| Marty- | Liz Pasha |
| Betty Rizzo- | Cindy Karekas |
| Dooby- | Don Peterson |
| Roger- | Paul Salone |
| Kenickie- | George Levins |
| Sonny- | Edward Corbett |
| Frenchy- | Christine Brown |
| Sandy Dumbrowski- | Jacqueline Taylor |
| Danny Ziko- | Ken Fischman |

- | | |
|---------------------|------------------|
| Vince Fontaine- | Bennet Wallander |
| Cha Cha DigRegorio- | Margo Campbell |
| Dancers- | Vickie McGough |
| | Joann McCuedy |
| | Danielle Taylor |
| | Michael Legato |
| | Anthony Renzi |
| | Steve Gallagher |
| | Chris Shiebler |
| | Marilyn Remeler |
| Teen Angel- | Jerry Rocker |

The music and songs of "Grease" were created by Jim Jacobs and Warren Casey. The musical itself, was written by Warren Casey. The rock and roll musical is based on the experience of attending high school, during the 1950's. The story centers around two young lovers, Sandy and Danny, how they meet, and fall in love. "Grease" also demonstrates the problems of adolescence, how young adults felt about themselves, each other, and the world around them, during the 50's decade.

"Grease" was first presented on February 14, 1972, at the Eden Theatre in New York City. It first hit Broadway in May of 1972, and was nominated for seven Tony Awards. Two years later, it was produced as a movie, starring John Travolta and Olivia Newton-John. It recently aired on national-television, Sunday evening, the eighth.

"WATERMELON MAN EXPLODES IN LAUGHTER!"

APPROVED FOR POSTING
Remove by
NOV 12 1972

"GODFREY CAMBRIDGE IS MARVELOUSLY FUNNY!"
—D. J. WOLF, CUE

"WATERMELON MAN IS A RARITY... A COMEDY WITH SOUL!"
—PLA-SOV

"WATERMELON MAN IS QUITE A FEAT OF INSANE, OFF-KEY FUNNINESS!"
—THE NEW YORKER

C.U.B. Movie

Columbia Pictures presents
WATERMELON MAN
GODFREY CAMBRIDGE · ESTELLE PARSONS
A Bennett-Mirell-Van Peebles Production
Written by Herman Raucher · Music by Melvin Van Peebles · Executive Producer Leon Mirell
Produced by John B. Bennett · Directed by Melvin Van Peebles · LOR
WESTCOAST FILMS / 25 Luak Street / San Francisco, CA 94107

MOVIE place: Student Center
date: Tuesday Nov. 17
time: 9:00 p.m.

Editors Desk

By Theresa Schretzmann

Confidentiality Of Advisory Grades

Advisory Grades: To those students who have ever received one, the two words do not bring forth pleasant memories. The feelings of inadequacy, probing questions by parents, fellow students and teachers, and the constant repetition of, "If only I had....", running through one's mind, are not pleasant recollections.

To 643 students this semester, however, the experience will seem all too familiar. Out of 1,143 total advisory grades given out, 568 of them were D's and 575 of them were F's. The class break-down for the 643 total of students who recieved Freshmen - 334 adv. grades
Sophomore's - 144 adv. grades
Junior's - 98 adv. grades
Seniors - 55 adv. grades
No classification-12 adv. grades

According to the college catalogue, advisory grades (academic warnings) are "designed to identify and help, as well as warn those students, who are in danger of not qualifying....", whether it be for a degree at the end of their senior year, or maintaining their respective status as a student at the college.

Although the intentions of the advisory grades system may be good, the method in which advisory grades are distributed to students brings with a great deal of controversy. Many students have registered their displeasure with the confidentiality of the academic warning system.

The usual route of an advisory grade starts with the professors giving those grades to their division secretaries. The secretaries, in turn, organize and type the information, which is given to records office. Records office runs this information through the computer, and gives copies of the advisory grades to three divisions: Student Affairs, Academic Affairs, and the Undergraduate Program. The advisory grades are mailed out to the student's

mailboxes, and to the student's parent's. R.A.'s are given lists of the students on their respective dorm floor's, who have received advisory grades.

Herein lies the controversy: Many Students feel that R.A.'s and parents have no right to receive copies of student's advisory grades. One student commented, "I more than anybody, know what is wrong when I receive an advisory grade. Either I am not studying enough, I am studying, but in the wrong manner, or I am letting other things interfere with my studying. I see no reason why my parents should receive my advisory grades. I am the one taking the responsibility of college, on my own, without my parents. The only function that advisory grade serves when it goes home, is to worry and upset my parents."

Another student commented, "It is no business of my R.A.'s whether or not I received an advisory grade. On top of that, I know for fact that all R.A.'s do not keep advisory grades confidential. This has happened to me before."

In contrast to this is an opinion given by an R.A. on the subject of advisory grades. "I think R.A.s should know because it is part of the job. It is like trouble-shooting. My job is to make sure things are going o.k. for the students on my floor. If I see that there may be a reason why a student is flunking out, (i.e. drinking, drugs, too much partying, not enough studying, etc...), I sit down and talk with them. I'm not here to tell students on my floor what to do. I only try to help them, either by suggestion a solution to their

problem, or by helping them find the cause of their problem."

Perhaps the best answer for this problem is to leave the decision up to the individual student. After all, if the student is old enough to take on the responsibilities of college, he is old enough to decide who will see his grades, permanent or not. (Advisory grades are not permanent records.) It should be up to the student to utilize the functions of his advisor, and then, if need be, seek the help of an R.A. or parent, if the student so chooses. After all, isn't that what college is all about? Learning to take on responsibility for one's self?

Thanksgiving Food Drive Letter

Dear Editor,

The following is to assist students with their charitable endeavors:

- * Baskets can be delivered before Tuesday, November 17, to the Campus Ministry Office, St. Edward's Hall.
- * As the baskets come in, they will be displayed in Student Affairs lobby.
- * Please use plastic laundry baskets, foot basins, etc., so that everything received will be practical and something for them to remember you by your charitable efforts.

- * Identify your basket with a large, readable sign with the name of the organization clearly marked.
- * Use cellophane to cover each basket to protect the contents inside.
- * There is no size limitation to the baskets. Suggestions: Canned corn, green beans, beef stew, ham, potatoes, chicken, yellow rice, pinto beans, flour, sugar, plus various boxes rich protein food stuffs.
- * Place such items as flour, sugar, etc. into another bag to protect it if it breaks open.
- * No breakable items (bottles)--Plastic acceptable.

Campus Ministry wants to exceed the 33 baskets that we distributed last year. We encourage all faculty in buildings to band together and distribute baskets, plus those students who do not belong to an organization or club to come together and present the baskets from your dorm. The success or failure of this food-drive depend upon you. Let us make it a community drive!

A plaque will be presented to the group that has contributed the most for our fellow brothers and sisters around Saint Leo College. The Knights of Columbus will assist The Benedictine Community to distribute these baskets to the needy.

Remember Paul's words in his first letter to the Corinthians, "If one member suffers, all the members suffer with it; if one member is honored, all members share its joy."

In this one area, we will see demonstrated, our concern for the needy, and our cooperation as one community. So talk it up, and make it a group effort.

"Because you did it to the least of my brother," Jesus said, "you did it to me."

Sincerely,
Joseph F. Morley

ADVERTISE IN THE

Monarch

OPINIONS

By Devorah Elcock

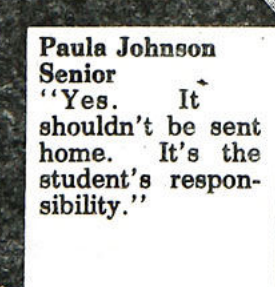
Do you think advisory grades should be kept strictly between the students and their professors?



M.J. Forsythe Junior
"In someway's it's good that R.A.'s, advisors, and parents know, so that they can help you out."



Rick Vitale Junior
"Yes. This is college and you're on your own."



Paula Johnson Senior
"Yes. It shouldn't be sent home. It's the student's responsibility."



Anne Marie Danet Senior
"Yes. Because it creates conflict between the student and his parents."



Clara Labadie Senior
"Yes. College is the beginning of your adult responsibility."



Theodore Sherman Senior
"Yes!!!"



Marie Forgette Senior
"Yes, however I think it is kept confidential."



Cheryl Bradshaw Junior
"Yes. It's your own personal business."



Chief Editor	Theresa Schretzmann
Assistant Editor	Jan Polack
Associate Editor	Kevin Bethel
News Editor	Mary Ann DeMeo
Sports Editor	Tresea Berry
Art Editor	Paula Roush
Features Editor	Joseph Morley
Special Interests Editor	Dan Maguire
Photography	Stacey Wenisch
Advertising	Kevin Perridge
Reporters	Stephanie Philips
	Paul Bermel
	Patricia Cahill
	Michelle Dodds
	Devorah Elcock
	Nicholas Fox
	Thomas Iraheta
	Mary Nahas
	Edward Manspor
	Sherry Palamara
	Pamela Schuessler
	Chris Shaughnessy
	Paul Symonette
	Brenda Ayers
	Ernie Williams
	Tim Wise
	Joy Shepard
	Senator Lawton Chiles
	Marty Conway
	George Gano
Layout	Theresa Schretzmann
	Jan Polack
	Tresea Berry
	Mary Ann DeMeo
	Kevin Bethel
	Paula Roush
	Dan Maguire
	Keith Mandel

The MONARCH is the official publication of the collegiate community of St. Leo College. Opinions expressed do not necessarily represent the views of the MONARCH staff, the college administration, or the faculty, unless otherwise stated. Articles letters to the editor, pictures, display advertisements, and other copy should be submitted ten (10) days prior to the next publication date. The MONARCH waives responsibility for the return of any copy left with us.
The MONARCH office is located in the Old Gym. Correspondents may be sent to P.O. Drawer 1, St. Leo, Fla. 33574 or phone (904)588-8200 (ext. 355)

Sports

Crosscountry Team "Dedicated And Hardworking"

By Edward Mansoor
Sports Writer



The 1981 Cross country season for Saint Leo has ended and Coach Patrick Reedy has described its participants as "dedicated and hardworking." This year's team consisted of Bonnie Bie, the only female, Maurice Acuna, Scott Bradley, Doug Clancy, Charles Powers, Sean O'Hagen, Jay Repine Robert Wallace, and Tom Noathstein.

The team took part in six meets, their most outstanding results coming from the Tampa encounter. As a team, they placed third, while on an individual basis, Sean O'Hagen, "top runner for this year's team," also placed eighth out of 125 participants in the Gainesville meet.

"We would have done better," commented Coach Reedy. "Daniel Wood, who was definitely our most outstanding runner, sustained a heel injury and was unable to take part in any of the runs."

In addition, Coach Reedy went on to say that there are "able students" on campus who could have aided the team. He has initiated a running club here at Saint Leo in an attempt to not only retain the present interest, but also to encourage others to participate. "A lot of people do not go into cross-country because they think that they cannot do it," he said. "By having an informal team such as this, I am trying to attract a greater number."

Coach Reedy went on to praise the athletic department in the person of Mr. Norman Kaye, whom he said, "has given the team a lot of support."

When asked about what can be done to improve future endeavors by the cross country team, Coach Reedy replied with a smile, "A few scholarships would aid the program."



Monarch MIKE POWER (on left in white) and KENNY DETZ (on right) attempt to intercept.

Final Soccer Game Ends In a Tie

The Monarchs were determined to win their final soccer game of the season on Saturday, when they challenged Florida Institute of Technology, Melbourne's "Engineers", right here at home. The Monarchs had won all five of their previous home matches. The challenge facing them was not only to retain this winning streak, but also to defeat the team that is ranked number five in all Division II Colleges in the South.

In the first half, much of the breath-taking action was concentrated in the last minutes. But there were some close attempts for both teams. On one occasion, Duke Leonard, "master defender" for Saint Leo, beat the F.I.T. defenders and was looking for a goal, but he pushed the ball just a little bit ahead of him. The play ended by the ball being received by goal-keeper Chuck Neils of F.I.T.

Stephen Martel scored his ninth goal for the season six minutes before the end of half one. This time, in the form of a penalty kick granted to Saint Leo after an infringement on Monarch, Kenny Detz, in the penalty zone.

F.I.T. responded to that by scoring twice, only one minute apart between the two plays. The first goal scored by Mario Kuhar was

coupled with a powerful left wing shot by Juan Taboda; which sent the ball to the far post, beating goal-keeper Marty Conway.

During the second half, things were really beginning to heat up. A little rough playing soon saw Brian Ramsey and Victor Hutcheson, of Saint Leo, off the field because of injuries. But the Monarchs, after 35 minutes, made the equalizer. Mike Power took a long one from the right wing and beat the goal keeper to the far post.

At the end of the regular playing time, the score was still two all. The extra playing time brought nothing but red and yellow cards to members of both teams. Two reds were issued to F.I.T., while a red and a yellow card, were given to Saint Leo. Despite that, the Monarchs defended their goal and finished their season with a record of 7 wins, 5 losses, and 1 draw.

Speaking after the game, Coach John Swart said, "We played well and we worked hard. I think we were in better shape than they were." Coach Swart made special mention of Hans Deelstra, whose defense did not go unnoticed throughout the game.

Next week, a review of the soccer season.

Preseason Predictions For Basketball

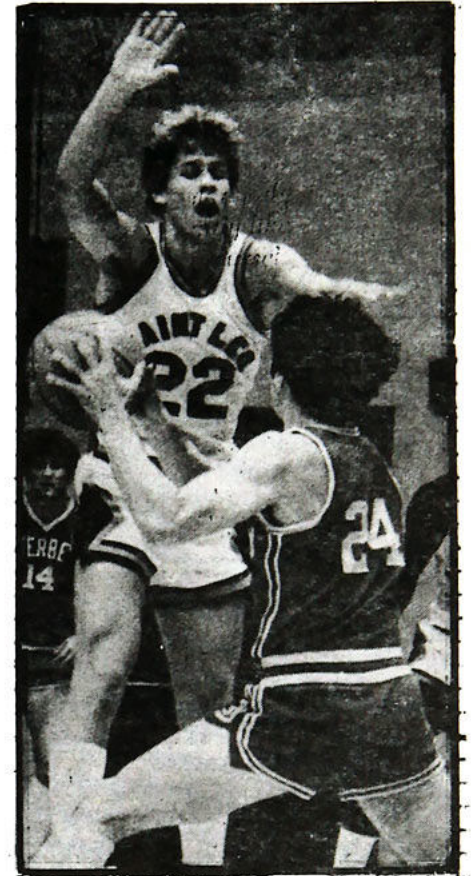
By Paul Bermel
Sports Writer

The much anticipated Saint Leo Monarch basketball season has finally arrived. As any upperclassman can tell you, last year's team record (4-23) was not a sight to behold. And with the looks for this year's overmatched pre-season opponents, (Division I powers, Georgetown, West Virginia, and Iona), their record might not have been much different. But with the arrival of the blooded talent, the Monarchs have chance to alter last year's (one win and nine losses) record, in the all important Sunshine State Conference.

The Monarchs have a rejuvenated roster with many new looking faces: 6'6" Scott Thatcher, from basketball crazed Indiana; 6'5" Rodney Murray, from prestigious Power Memorial High School of New York City, Fla.; Tim Lovett, from Plant City, Fla.; Dennis Prue, 6'6", a bulky transfer from Connecticut; 6'5" Sankar Montoute, whose muscle cannot be used until January 7, when he becomes eligible, and Gary Long and Duane Mlachnik, who were both ineligible last season. The lone returning starter and captain, Mike Malatestinic, will provide much needed leadership.

All of the above players will be "getting their feet wet" early in the season. Saint Leo's future looks potentially strong, although they lack a natural center. Coach Gary Richert thinks his team will have a chance even though he didn't recruit a center: "We took the best men available, we figured we had a better chance with four guys, 6'6", than going with a not so great, big man."

Because of the fact that they do not possess a natural center, the Monarchs will be forced to play zone defense against the bigger teams.

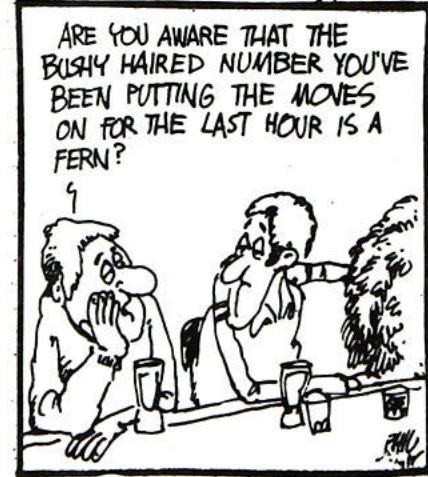


Junior Basketball Captain, MIKE MALATESTINIC, in action.

This in turn will test the stamina of Coach Richert's players. Coach Richert obviously knows what lies ahead, and has his players on a "six day-a-week practice schedule."

The only place to look is up, after a torrid 4-23 season behind them. Or is there? Time will tell. We leave it up to the coaches and the players to perform and make Division II college basketball at Saint Leo's come alive! Prediction; Look for the Monarch's to put it together late in the season.

FRANKLY SPEAKING ...by phil frank



1981-82 Men's Basketball Schedule

TUESDAY	NOVEMBER 24	WEBBER COLLEGE	HOME	7:30
Saturday	November 28	Univ of West Virginia	Away	4:30
SATURDAY	DECEMBER 5	FLAGLER COLLEGE	HOME	7:30
Tuesday	December 8	Iona College (New York)	Away	8:00
Wednesday	December 9	Georgetown University (Washington D.C.)	Away	7:30
FRIDAY	DECEMBER 11	URBANK COLLEGE	HOME	7:30
Saturday	December 19	Transylvania University (Sun Dome - Tampa)	Away	7:00
MONDAY	DECEMBER 21	SAINT LEO TOURNAMENT : TRANSYLVANIA, LYNCHBURG COLLEGE, MILWAUKEE SCHOOL OF ENGINEERING	HOME	TBA
TUESDAY	DECEMBER 22			
WEDNESDAY	JANUARY 6	PFEIFFER COLLEGE	HOME	7:30
FRIDAY	JANUARY 8	CALIFORNIA STATE UNIV	HOME	7:30
SATURDAY	JANUARY 9	LONGWOOD COLLEGE	HOME	7:30
Tuesday	January 12	★ Florida Southern College	Away	7:30
FRIDAY	JANUARY 15	★ ROLLINS COLLEGE	HOME	7:30
TUESDAY	JANUARY 19	★ ECKARD COLLEGE	HOME	7:30
Saturday	January 22	★ Biscayne College	Away	7:30
Monday	January 25	Florida State Univ	Away	7:00
Tuesday	January 28	Central Florida Univ	Away	7:30
SATURDAY	JANUARY 30	★ FLORIDA INSTITUTE OF TECH	HOME	7:30
THURSDAY	FEBRUARY 4	HARTWICK COLLEGE	HOME	7:30
SATURDAY	FEBRUARY 6	★ FLORIDA SOUTHERN	HOME	7:30
Tuesday	February 9	★ Rollins College	Away	7:30
Friday	February 12	★ Eckard College Away	Away	7:30
MONDAY	FEBRUARY 15	★ BISCAYNE COLLEGE	HOME	7:30
WEDNESDAY	FEBRUARY 17	★ CENTRAL FLORIDA UNIV	HOME	7:30
Saturday	February 20	★ Florida Institute of Tech	Away	
Friday	February 28			
Saturday	February 27	S.S.C. Tournament	Away	TBA

★ Denotes Sunshine State Conference Game

