

★ Special Edition ★



MONARCH

Saint Leo, Florida 33597-2227

Thursday, August 10, 1989

ORIENTATION

Have we got plans for you!

Orientation for fall 1989 promises to be both enjoyable and informative! Typically, students have thought of a thousand questions over the summer. The Orientation staff has lined up some great people to answer ALL of those questions. During the time between Aug. 29 and Sept. 6, new students will have the opportunity to become familiar with the Saint Leo College campus, its facilities and its services. It certainly helps a student feel more at "home" to know his way around the cafeteria and his residence hall. By the end of our campus tours, every student will know the "ins-and-outs" of the campus. Academic advisement and registration procedures, as well as other important details, will also be presented during Orientation. After Orientation, a new student should begin his academic career with more confidence.

FRESHMEN

Orientation begins on Tuesday, Aug. 29, with a dinner at 6 p.m. at the McDonald Student Center Cafeteria. If your family is on campus, they are welcome to attend. Family meals will be \$6.95 per plate, while your meal price is covered by the College.

By 7:30 p.m., students will begin the REAL business of orientation—information sessions and academic advisement.

TRANSFERS

Transfer Orientation is specifically designed to meet the concerns of transfer students. Your abbreviated orientation begins with a dinner at 6 p.m. on Thursday, Aug. 31, in the McDonald Student Center Cafeteria. Immediately following dinner, you'll meet with your Orientation leader and begin planning for the registration process.

ALL NEW STUDENTS

Once you have arrived on campus, you'll want to proceed directly to the McDonald Student Center for Orientation Registration. You'll need to register for Orientation before you check in to your residence hall. (In fact, you won't be allowed to check in to your residence hall without proof of Orientation Registration.)

Be sure to reserve time during your first day on campus to arrange for your campus post office box. If you plan to do your banking locally, you'll also want to arrange for that. There is a list of local banks in this issue of *The Monarch* for your convenience.

Orientation leaders will be on hand throughout the week to answer questions and give directions. Your first few days—Tues-



day (for freshmen), Wednesday, Thursday and Friday—will be filled with campus life orientation and academic advisement. Your Orientation leader will be a very important person to you during this week of your life.

SEPTEMBER 2 AND 3

By Friday evening, you will be whirling with information about campus life, so we've planned a relaxing weekend—Busch Gardens on Saturday and a visit to Adventure Island on Sunday! Well, maybe we haven't planned a relaxing weekend, but it will certainly be fun! You'll want to pay your \$30 fee for both events during Orientation Registration. We'll take buses to both events, so reserve your seat as soon as possible during Orientation Registration.

LABOR DAY, SEPTEMBER 4

You'll probably want to rest from your exciting weekend on Labor Day and finish "settling in" your room. Upperclassmen will be returning to the residence halls this date. A DJ will be playing poolside at the Marion Bowman Activities Center from 11 a.m. until 3 p.m.

TUESDAY, SEPTEMBER 5

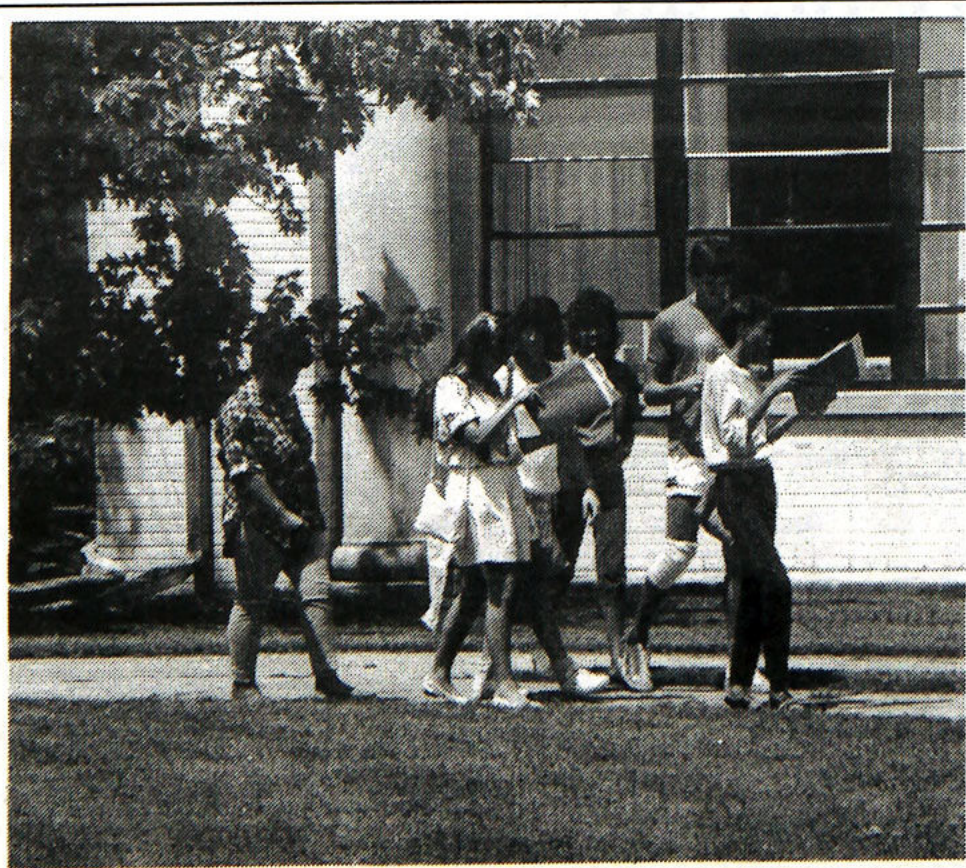
Today is THE DAY! You'll register for classes at the Marion Bowman Activities Center. Don't worry! You'll be well prepared for registration after you academic advisement meetings with your mentor. You'll also see lots of friendly and familiar faces (the orientation leaders') during the registration process.

THE BEGINNINGS

Wednesday is the first day of all classes for the fall semester. Friday all new and returning students will celebrate the beginning of the new academic year with the New Student Convocation/Opening Liturgy at 11 a.m. At this time, we officially induct all new students, freshmen and transfers into our College community.

**SEE INSIDE FOR
INFORMATION
ON...**

- ORIENTATION LEADERS
- RESIDENCE HALL LIFE
- and
- CAMPUS ACTIVITIES



Happy Birthday Saint Leo Centennial Celebration Begins

By William E. Quigley
Managing Editor

The day was June 4, 1889, the day the state of Florida granted a charter to the Order of Saint Benedict of Florida to "have and possess the right and power of conferring the usual academic and other degrees granted by other colleges in this state."

June 4, 1989, marks the beginning of Saint Leo's 100th year. The celebration kicked off on April 22, 1989, with graduation of the class of '89, and continues for the next 16 months. This celebration ends with the welcoming of the freshman class on Sept. 5, 1990.

During its celebration of 100 years as an academic institution, the community is also celebrating the 25th anniversary of Saint Leo as a four year academic liberal arts college. There will be many events to celebrate the anniversary, they include, a recognition in Tampa Stadium during a Buccaneer football game, 1890's festival, a parade, a golf tournament, bike race, road race, and many other related activities.

Saint Leo is rich in tradition. Since the first day the school opened its doors, the educators have had one goal—to enrich the lives of those students attending Saint Leo. Over the years there have been many good times, times of friendship, parties and classes, but most of all there has been time to learn and grow as individuals. Many students have come before us, and many will come after, but the aims of the past, future and present remain the same, a commitment to excellence. For the past hundred years, Saint Leo has bestowed the greatest gift of all, an education.

For those students who are new to the Home of the Monarchs, the next four years are going to be the best. For those who are not new, your remaining years promise to be as much fun as those before.

It is a time of celebration, and a time for many to reflect. The students, faculty, and administration welcome you as new members of the Saint Leo community and invite you to take part in the festivities that celebrate our school's historic past and glorious future. It is an exciting time; don't be left behind.



Lars Tate (pictured) and his Buccaneer teammates will join in the celebration of Saint Leo's 100 years as an academic institution at a pre-game on field recognition.

Festival promises five fun days

The 1989-90 Homecoming Queen and King is . . . Well, we won't know that for a few months, however, the plans for Fall Family Festival are a little more definite. Beginning Wednesday, September 25, when George Bernard Shaw's play "Arms & The Man" opens at the College Theatre, and ending with a Sunday Mass the celebration is full of excitement and great fun for everyone. The planning committee has hit high gear with ideas and plans for this year's talent show, the crowning of the king and queen, and many more related activities.

The five days of fun begins on Friday when the Humanities Department presents the annual Humanities Festival. The theme this year, in recognition of Saint Leo's Centennial, will be the 1890's. The festival has grown to higher and higher heights as it has evolved and changed over the years. This year's festival will offer games, food, live music, individual performers, and other exciting activities. It all

starts at 11:30 a.m. and runs to 3:30 p.m. Last year over 500 people attended including hundreds from local schools and the Dade City/Saint Leo community in general.

Friday night Saint Leo students will get an opportunity to display their talent in a Talent Show presented in "The Cage" in the McDonald Student Center. Parents are invited to watch their sons/daughters stand in the spotlight as stars of the show. The Talent Show is just one of the many new events this year's committee is sponsoring to make the '89 Fall Family Festival the best ever. Another event on campus Friday evening will be a performance for parents and students of "Arms & The Man" in the College Theatre.

Saturday kicks off a parade! The parade will start at Marmion/Snyder, the residence halls on the West side of the college. It will make its way to the newly finished Thomas B. Southard Memorial Stadium. After the fifth inning is completed, the best float and

outstanding banner will be awarded. It will also be the time to find out who the '89 Homecoming King and Queen will be.

Saturday's festivities will culminate in the President's Reception and Dinner/Dance. The dinner dance is a formal affair and a time to celebrate!

The weekend's festivities will close with a solemn mass on Sunday. Parents and students will join together to celebrate the liturgy reaffirming Saint Leo's strong commitment to its religious foundation.

Renee Giarizzo, Chairman of Parent's Weekend, has a great many more plans and ideas. New and old students are invited to get involved in the planning and implementing process. Over the next few months, parents and students alike will be hearing more about this fall celebration. Look for something in the MAIL, and get ready to celebrate with the Saint Leo College community! See You There!

EXTRA! EXTRA! EXTRA!

Parents, you can read all about it by getting a full year's subscription to Saint Leo's student newspaper. Just send \$20.00 to

The MONARCH
P.O. Drawer 1
Saint Leo, FL 33574



Point to Ponder

"Life is made up of steps, some small, some backwards, others momentous. Today you have taken maybe the most important step of your life, you have entered college. I wish you the best of luck. I also wish you, the hardest, most backbreaking, mind numbing, value shocking, and uplifting college career. This is the only way to change, and change you will!"

Dr. George Marshall
Welcoming the freshman class
to Knox College

ORGANIZATIONS

The Monarch

Campus Ministry

A group dedicated to Christian service

Saint Leo College is a school rich with Catholic tradition. The school, founded by Benedictine monks, continues its strong ties to the Catholic faith. One of the many ways christian ideals are promoted here at Saint Leo is through Campus Ministry. Campus Ministry is an organization dedicated to spiritual growth needs of students through daily as well as Sunday masses. As a service organization, it is second to none. For the past two years, Campus Ministry has been named by the Student Government Association as the Outstanding Service Organization because of their work in Dade City as well as the Saint Leo Community. Some of the many projects Campus Ministry worked on during the last year include Thanksgiving Day Food Baskets, a World Hunger day Food Fast, Toys for Tots, Easter Baskets for poor and disadvantaged children, and many other related activities.

Along with the spiritual and service projects, Campus Ministry also sponsors the Saint Leo College Mardi Gras.



Two office workers collect food for Campus Ministry's annual Thanksgiving Day Food Basket Drive.

This pre-lenten celebration in its second year was a huge success this past year with more than 500 people in attendance. Next year's event promises to be bigger and better. Different campus organizations sponsored food and game booths, door prizes and a live jazz band.

In order to incorporate members of other religions into the schools spiritual life, Campus Ministry also sponsors monthly ecumenical services. These services are dedicated to bringing together all faiths.

Campus Ministry is led by President Theresa Pepe, Secretary Valerie Bednarz, and Treasurer Karen Vail. This group is open to all new and returning students. They welcome members of all faiths to join.

Saint Leo can be a very rewarding place, and the time can be both educational and fun. Campus Ministry does all it can to incorporate all of these things into one. They believe in growth through learning of God.

CUB wants to entertain

They bring the funniest comedians, the biggest movies, the best magicians, the coolest singers, and the greatest bands to Saint Leo College. Who is this group, you are asking yourself? This organization is the College Union Board. They are better known simply as CUB.

What Campus Ministry is to spiritual life, SGA to leadership, CUB is to bringing the best entertainment possible to Saint Leo College. Over the next year you will experience and be a part of dances, music, individual performances all presented for your enjoyment by CUB! This group that does so much to fill your weekends and weekdays is led by President Craig Love, Vice President Giarizzo, and Secretary/Treasurer Ralph Rafuse. CUB works with thousands of dollars dedicated to one purpose to entertain the student body of Saint Leo College. This group is working hard right now to plan the events you will see. If you would like to be a part of the decision process, CUB is always looking for



Sandi Kelley, Eileen Rea and Amanda French are all dressed up and ready to start the parade at last year's Homecoming Festivities.

new members. Stop by the Student Development Office in the lower level of McDonald Student Center for more information on how to join CUB.

Last year CUB had a great year with as much success as they have ever had.

They brought to Saint Leo block buster movies, a video dance, comedians, and even a circus! That's right. There was even a circus! Who knows what new events CUB is thinking up, but it will be very exciting to find out!

New vice president announced

Saint Leo, FL — John Weicherding, acting vice president for business affairs and director of human resources, has been named vice president for operations of Saint Leo College.

College President Monsignor Frank Mouch's nomination of Weicherding was approved by the Saint Leo College Board of Trustees May 19. In his new position Weicherding is responsible for budgeting and managerial tasks formerly carried out the vice president for business affairs.

He will also continue to supervise the Office of Human Resources which will receive a new director. The detailed management of the business office and its personnel is under the direction of Jeanne DeMatteo, newly named director of financial affairs.

Weicherding was selected as director of human resources in July, 1988. He is the former executive director of the AGC Jobs Center, Tampa, and served as human resources director for the University of Boulder, Colorado, and personnel director for the University of South Florida.

A Look at Craig Love : the man behind the money

By Michael Lynott
Monarch Staff Writer

He is in charge of a \$62,000 budget and a lot of power in allocating that money. Let's look into the man behind this power. Craig Love, the new President of the College Union Board CUB, and what his plans are for next year.

Love was part of CUB this last year, working on the planning board, so he knows first hand what is expected of

him. "I have worked with Amanda French, the past CUB president this past year and I have learned a lot about how to be an effective leader." Love believes that CUB has been a very cohesive group. He says, "We had a productive year. We were more in tune to the students wants and needs as opposed to prior years, a success we can attribute to Amanda."

Love vows to continue the success of CUB by continuing the success of the last administration and adding a few

ideas of his own. Love said, "CUB is an important organization on campus. Its purpose is to provide activities for the entertainment of the students. This is important because it boosts the morale of the students as well as providing that ever important outlet of entertainment. That is why I am going to strive for the kind of cohesion that we have been recently achieving. We need this kind of support within CUB to bring entertainers to the campus as well as running the shows smoothly. How-

ever, I would like to go after bigger names and bigger acts than the last administration."

The way Love plans on getting bigger names and bigger acts is by reducing the quantity of the acts coming to the campus and increasing the quality of the performers who entertain us. Love says, "The average act costs about \$2,000. I would like to bring in \$5,000 or \$6,000 acts and get some household names to the campus."

The Monarch

NEW BEGININGS

New academic policy in effect

By William E. Quigley
Managing Editor

Dr. Maribeth Durst, Assistant Vice President for Academic Support Services, says the 1990-91 school year will reflect a commitment to higher standards and stricter academic requirements. One aspect reflecting this change will be the increased minimum Cumulative Grade Point Average (GPA) needed to stay enrolled in the college. A Grade Point Average is a cumulative average of all grades received from courses taken.

In the past, the academic requirements were lower than the new standards. A first semester freshman needs to attain a 1.5 GPA. Second semester freshman will need a 1.75 GPA. This compares to a 1.5 GPA in previous years. Under the new guidelines, a student must maintain a 2.0 from the sophomore year on in order to graduate. In previous years, a sophomore needed only a 1.7 GPA and juniors and seniors only a 1.9 GPA. Under the past more lenient GPA policy, 79 students were removed from the college for deficient GPAs following the 1988 fall semester.

Another aspect that will be emphasized will be the new academic honesty policy. This policy was initiated by

concerned students through the Student Governments Association. Under this new policy the normal sanction for first-time offenders is failure for a course. The second offense may result in suspension from the college. Even before this stricter policy was enacted, 39 students were accused of academic dishonesty, with 35 found guilty this past spring semester.

Durst states, "We plan on blitzing the campus in the fall with information about cheating, plagiarism, sanctions, and the new academic requirements." This blitz will also be in connection with raised standards in the classroom. Teachers will be pushing hard for student excellence. This coupled with increased GPA standards, fewer developmental students, and a more stringent academic policy will lead to higher overall standards.

Durst went on to say in order to ease freshmen into the academic atmosphere of the college the school will continue to use freshmen mentors. Freshmen mentors are professors and administrators who assist incoming students. Durst elaborates that he job

of these mentors is to "help freshmen adjust to the college through connecting them with adults who have achieved success in the academic field". A mentor becomes a role model for the new student. They are there to answer the hundreds of questions the new student has. They discuss everything from how to register for classes,

"You are an adult, and it is your job to control your own life. This is part of growing up and being in college, so study your college catalog!"

to how to deal with a roommate. They also can provide information on such varying topics as how to deal with homesickness to what there is to do on the weekends. The mentor does everything they can to make life at Saint Leo easier in the very confusing first few weeks of college life.

Another of the ways the college assists you along the path to graduation is through the faculty advisor program. A faculty advisor is here to do just that - advise. An advisor will be assigned to you in your declared field. However, it is the individual student's responsibility to make sure they are getting the right advice. In order to protect yourself, get acquainted with the college catalog and the requirements for your specific field. Durst states, "The advisor is not responsible for your academic life. You are an adult, and it is your job to control your own life. This is part of growing up and being in college, so study your college catalog!"

If Durst, who is in charge of both the freshman mentor program, and the academic advisory program, could give all students some advice it would be to, "Make the most of your time here through asking questions. Don't be afraid of uncertainty. Take the longer and harder route, you'll be better if you do. Lastly this can be a great time in your life, don't blow it."

MONARCH ready for new school year

By John A. Merullo
Editor-in-Chief

Dear New Students:

My name is John Merullo. I'm the newly-appointed editor of the regular editions of the *Monarch*.

This, as you have probably read, is a special summer issue of the *Monarch*.

Those of you who will be coming to Saint Leo College for the first time this fall are probably asking yourselves something like: "Gee, I wonder what this neat-looking paper is like during the regular academic year?" (Okay, okay, I said something LIKE that!!)

Seriously, the *Monarch* is a bi-

weekly student publication produced by students for the entire Saint Leo community. Its history begins with the *Saint Leo Chronicle* back in the days of Saint Leo College Preparatory School. When Saint Leo became a junior college in 1959 and a four-year college in 1963, the newspaper was still there, variously called the *Lion* and the *Monarch*. By the mid-70s however, the *Monarch* had won out (Thank goodness! Who wants to read a paper whose name sounds like the reporters are lyin'?)

The *Monarch* has just finished its best year yet. Although we had some problems near the beginning that

delayed the first issue till November, we soon made up for lost time. One of the achievements of which we are most proud about the new and improved *Monarch* is some of the popular regular features we have, especially "On the Left/On the Right", a "point-counterpoint" - type column where two students state their views on an issue from liberal and conservative views; and "Centennial", in which Dr. James J. Horgan, professor of history and chair of the Division of Social Science, gives a snatch from the one-hundred-year history of the Saint Leo community.

Any student may join the *Monarch*

staff at any time. I should especially like to invite all who worked on their high school newspapers as well as those who plan to major in history, political science, or English (my major). I think that we have as much to offer you as you do to us.

My kid sidekick Bill Quigley (He's nearly three whole months younger than I! By the by, he prefers "Assistant Editor" to "kid sidekick") and I will be speaking to all interested new students about the *Monarch* on Aug. 31. We hope to see you there.

Respectfully yours,

John A. Merullo (a.k.a. Monarch Man)

Monarch

Saint Francis Hall

Saint Leo College

(904) 588-8355

Editor Pat Jackson Zoeller
Managing Editor William E. Quigley
Staff Writers: Michael Lynott, John A. Merullo

This is a special edition of the *Monarch*.

The regular *Monarch* is a bi-weekly student publication. This special issue was created with the help of many people whose hard work brought this publication to you. We hope you enjoyed reading this issue as much as we enjoyed bringing it to you. Special thanks must go to Robert Ruday and Jeanine Jacob.

The opinions and stories expressed in the *Monarch* are not necessarily the views of the editor or of Saint Leo College. We invite all old and new students to join the *Monarch* staff next year. If you have any input into this publication, send them to: The *Monarch*, P.O. Drawer I, Saint Leo, Florida 33574

Academic Calendar Fall Semester 1989

Freshmen Arrive **Tues., Aug. 29**
Transfers Arrive **Thurs., Aug. 31**
Residence Halls Open for Returning Students **Mon., Sept. 4**
Registration: All full-time Students **Tues., Sept. 5**
Classes Begin **Wed., Sept. 6**
Opening Convocation **Fri., Sept. 8**
Last Day to Add Course or Reduce Course Overload Without Fee **Tues., Sept. 12**
Faculty Submit Mid-Term Grades **Mon., Oct. 23**
Mid-semester Reports Issued **Thurs., Oct. 26**
Last Day to Remove Incompletes **Thurs., Nov. 2**
Last Day to Drop Courses **Thurs., Nov. 2**
Pre-registration/Advising for Spring Semester Begins **Mon., Nov. 6**
Thanksgiving Holidays **Wed. - Fri., Nov. 22-24**
Classes Resume **Mon., Nov. 27**
Pre-registration Ends **Wed., Dec. 6**
Last Day to Withdraw from College Without Course Failure **Thurs., Dec. 7**
Last Day of Classes **Wed., Dec. 13**
Final Exams **Thurs. - Mon., Dec. 14-18**
Residence Halls Close at Noon **Tues., Dec. 19**
All Grades Due (Noon) **Tues., Dec. 19**

ORGANIZATIONS

The Monarch

Student Government Association SGA's Missing Ingredient?

The Student Government Association (SGA) is a campus organization dedicated to serving the interests of the student body. The SGA is led by President Amanda French, Vice President Eileen Valdin, Secretary Jamie Gelep, and Treasurer Jennifer Petti. Through committees and especially the Student Senate, the SGA will be working hard to address student issues and concerns.

The Student Senate is intrinsic to SGA's success. The Senate is made up of representatives of each student organization on campus. The job of the Senate is to voice student opinions and suggest proposals. They are the vital link between students and the SGA.

The main focus of the SGA board this year will be continued emphasis on getting students involved in the organization. All students can attend the SGA meeting and join one of the many committees.

Sometimes an unfortunate reality facing the SGA is that the group can

only be as good as the students support for the organization. When students fail to support the SGA, the group becomes ineffective. Over the past few years, the student support and participation has been getting stronger. Therefore, the SGA is beginning to make a real difference.

In order for the organization to keep getting stronger, it is going to take more than individual student involvement. It is also going to require organizational involvement and support. The SGA can be a strong instrument of positive change. The group, together with student and organization support, can bring great improvements and foster a sense of community.

Remember everyone can make a difference. SGA's future looks good. The organization has solid leadership. This past year, they made great strides in improving the quality of student life. The only thing missing now is YOU.

Plans set for SLC recognition day at Tampa Stadium

Tampa, FL — Saint Leo College may not be much on the gridiron, but the Green and Gold will make a showing at Tampa Stadium Sept. 17 when the Tampa Bay Buccaneers play their season opener against Super Bowl champs the San Francisco '49ers.

Alumni, students and friends are invited to show their colors for "Tampa Bay Bucs' Saint Leo College Recognition Day," when the Tampa team salutes the College's Centennial Year in a special pre-game show.

Saint Leo College Monarch sports figures from past and present will be featured on the field, along with College President Monsignor Frank M. Mouch. A capacity crowd is expected for the Bucs' first home contest of the season.

Special group seating at \$16 a ticket will be reserved in the end zone for Saint Leo College. Tickets are available through the Bucs' ticket office, One Buccaneer Place, Tampa, Florida, 33607. Green and gold Centennial t-shirts for Saint Leo fans will be offered by mail to alumni and friends this summer.

The Tampa Bay Bucs' Saint Leo College Recognition Day salute was initiated by team owner Hugh F. Culverhouse, who visited the campus in October, 1988. Mr. Culverhouse donated \$100,000 to Saint Leo College earlier last year to outfit two computer labs in the Daniel A. Cannon Memorial Library.

SGA President French looks to the future

Amanda French, the new Student Government Association (SGA) President, looks to this year with great optimism.

When asked why she made the transition from College Union Board president to SGA president, French sat back in her chair and laughed almost as if she had asked herself that very question. She then replied, "It was a hard decision, I'll admit, but I would have to say the biggest reason has to do with my future plans. My major is Public Administration and Political Science, so I want to get the experience of working in a government type of organization to help better prepare me."

French was very pleased with the success Gina Petti brought SGA and hopes to continue along the same successful path. French said, "Being able to maintain an organization and take on the challenging issues at hand is going to be my biggest concern. However, I want to wait until I am comfortable with my Executive Board before setting down any concrete policies that I want SGA to follow." One task that Petti will be handing down to her successor will be getting all the student organizations together. This is called the "Senate System."

The Senate System is essentially a rediscovery of a concept that was de-

veloped three years ago. It involves getting one representative Senator from each organization to speak for that organization at the SGA meetings. The ultimate goal of this plan will be to bring all of the organizations together under the power of the SGA. This way, if the organizations have a problem that they need to solve, SGA can use its power to bring about a solution.

In talking to Petti, the outgoing SGA president, one may sense her pride in the accomplishments that the SGA has experienced this past year. Petti says that the biggest accomplishments of the year is the "Senate System."

Petti, who ironically made the same step as French — going from CUB president to SGA president — offers some valuable advice and well wishes. Petti says, "If I had to give advice to Amanda, I would just tell her to continue working through the committee structure that has been established. I wish her the best."

French should have a productive year. With the ground work already laid by the Petti administration, the stage is now set for French's delegative style to push SGA into a more important role. The role of a real voice for the students.

IFC/Panhellenic pulls toward harmony

By William E. Quigley
Managing Editor

Saint Leo College is home to eight fraternities and six sororities.

Watching over these organizations is Panhellenic for sororities and the Inter-Fraternity Council (IFC) for fraternities.

Panhellenic and IFC promote cooperation and coordinate all Greek events. The membership of these two organizations is made up of every Greek society.

They sponsor socials, dances, and set rules for the member organizations to follow. They also induct new Greek organizations into the school (something that happened twice last year). And they also work to bridge communications between the administration and the individual Greek groups.

IFC is led by Michael Stern of Kappa Theta, and Panhellenic is led by Joann Zarro of Alpha Xi Omega. These groups are planning a big year. Stern says, "After a rocky year last year, we hope for greater unity with all brothers. In the past there was a local versus national attitude that we want to do away with." Zarro adds, "We must become better known to the student body. We must represent the students



One of IFC/Panhellenic's many sponsored events is Greek Week.

in the Greek system more fairly. We also must get rid of the image that

Greeks don't care about the school. This myth is simply not true."

The goal of these two organizations is to promote harmony between all Greeks. IFC went a long way towards doing that when they allowed Alpha Phi Alpha and Tau Kappa Epsilon into IFC, thus officially recognizing them as Greek organizations. Not only does IFC and Panhellenic work to promote harmony, they also allow each individual Greek organization to feel a sense of autonomy by allowing them to set their own rules.

Although as a first semester freshman, an individual is not allowed to pledge. (Page 17 of the student handbook states, "First semester freshmen or transfers with less than 12 credits are not eligible to pledge a social Greek organization.") You will have the opportunity to look at the different Greek Organizations. For those who can pledge, the following dates are for rush, general rush, and then pledging: Panhellenic general rush for sororities will be Thursday, Sept. 21. IFC General rush is Friday, Sept. 22. On Friday, Sept. 22, IFC/Panhellenic will sponsor a dance for all students in order to get a look at the Greek system.

Rush for both IFC and Panhellenic begins Saturday, Sept. 23.

NOT A SHY ONE IN THE BUNCH!

Meet your leaders

The Orientation staff for fall 1989 is comprised of 33 sophomores, juniors and seniors. They've been chosen as Orientation Leaders because each is excited about helping you get off to the right start in college life!

Your Orientation Leader will send a postcard to your home address just before Orientation starts. You can match their name from the postcard with their picture in this paper, then you'll be sure to recognize them. Of course, they'll be on the lookout for you, too. (Hint: The Orientation Leaders all avow that they are much prettier than their mug shots portray them to be. Wait and see!)



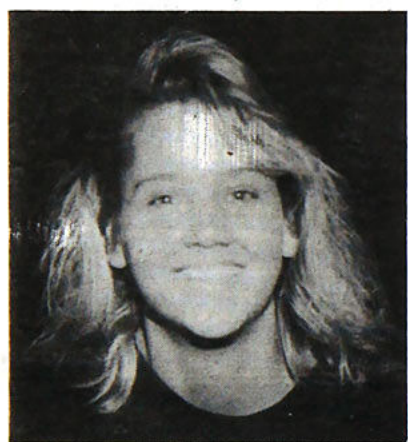
Julie McKinney is a sophomore sports management major from Brunswick, Georgia. Julie is on the intramural staff and on the softball team.



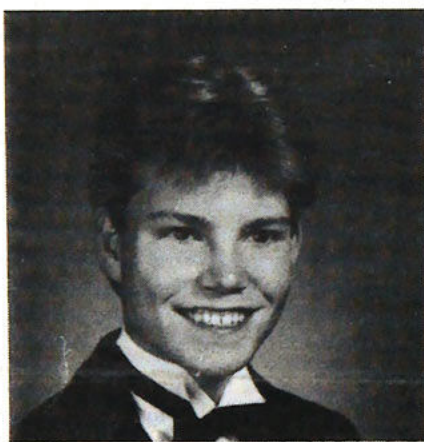
Renee Giarrizzo is a sophomore marketing major from Tampa. Renee is the chairman of the Fall Family Festival Weekend. She is also vice president of the College Union Board (CUB).



Holly Hagemann is a junior restaurant/hotel and business management major from Huntercreek, Missouri. Holly is vice president of the Hotel Sales and Marketing Association and a member of the Saint Leo Dance Company. Watch out for the Missourian.



Kim Pryor is a sophomore education major from East Brunswick, New Jersey. "I had an outrageous time at my orientation, says Kim." I hope I can help other people have the same."



Taft Flittner is a junior marketing major from Belleair. Taft is a member of Sigma Phi Epsilon, vice-president of the American Marketing Association, and a member of Campus Ministry. (He looks good in his tux, doesn't he?)



Eileen Rea is a sophomore English/social work major from Clearwater. Eileen is a member of CUB, the *Monarch*, photo editor of the Golden Legend, and president of the Saint Edward/Saint Leo Hall Government.



Justin Picillo is a senior restaurant/hotel management major from Benkley Heights, New Jersey. Justin is the president of Sigma Lambda fraternity. He is also a Student Government senator and an IFC representative. Occasionally, you will catch Justin as a security guard at CUB events!



David Kaye is a sophomore physical education major from Dade City. David is a member of the Tau Kappa Epsilon fraternity. He also works with the Department of Physical Education and Inter-Collegiate Athletics.



Julia Hanes is a senior physical education major from Omaha, Nebraska. Julia is the captain of the volleyball team and the secretary of the Delta Phi Delta sorority.



Tracy Busby is a junior pre-law major from Dade City. Tracy is involved in the Dance Company, a graduate at the Basic Training leadership seminar. She also participates in the Honors Program.



Kimberly Eagleburger is a junior hotel/restaurant and business management major from Manchester, Missouri. She is a member of the Hotel Sales and Marketing Association, the Saint Leo College Dance Company, and the Aerobics Club.



Joseph Lynn is a sophomore business major from Boca Raton. Joe is a member of the Sigma Phi Epsilon fraternity. He has also been active in intramurals at Saint Leo.



Jamie Gelep is a senior computer systems in business major from Clearwater. Jamie is a member of Delta Phi Delta sorority and the Student Government attorney general. She is also serving on the Family Fall Festival Committee.



Jennifer Petti is a sophomore business management major from Hollywood. Jennifer is a member of the American Marketing Association, the Fall Family Festival Committee, and the Student Government Association.



Sara Mauricio is a junior psychology major from the Dominican Republic. Sara is a member of Delta Phi Delta and CUB.

Board of Governors



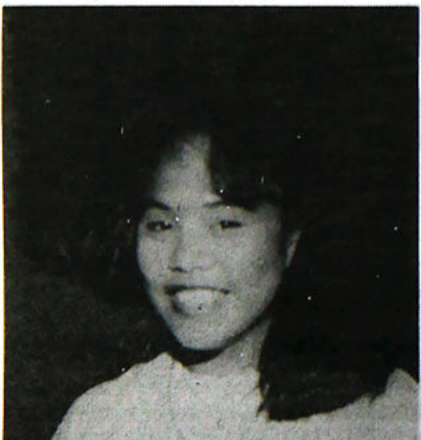
Donald Bossi is a senior criminology major from East Boston, Massachusetts. Donnie is a member of Sigma Phi Epsilon fraternity where he is Rush Chairman and Alumni Operations Director. Donnie is also involved in the IFC.



Victoria Carambato is a sophomore business major from Sparta, New Jersey. Vicki says her Orientation Leader made her feel at home during her first week on campus. You can bet she'll do the same for you.



Fred Kussel is a senior biology major and chemistry minor from Itasca, Illinois. Fred is treasurer of Kappa Alpha Sigma fraternity and a member of the Inter-Fraternity Council. This spring Fred attended the Southeastern IFC Leadership Academy in Atlanta, Georgia.



Anna Molina is a sophomore accounting computer information systems major from Leesburg. Anna is a member of CUB, Fall Family Weekend Committee, and is a Basic Training leadership graduate.



Joan Plowman is a senior management major from Bermuda. Joan is vice-president of Delta Phi Delta, junior class secretary, and a Student Government senator.

The 1989 Orientation Board of Governors planned the Orientation schedule with you in mind. Selected last fall by the '88 Orientation staff, the Governors have helped train the '89 Orientation Staff. They want to hear your compliments and complaints about our program. Be sure to look for them during Orientation Check-In! They are THE BEST! We are sure you will agree with us.



Mimi Roberts is a senior international studies major from Nassau, Bahamas. She is secretary of Saint Leo College Ambassadors and entertainment director for SLISA (Saint Leo International Students Association). This is her second year as an orientation leader.



Sue Deloge is a junior music theatre major from Pinellas Park. She is a member of Alpha Omicron Pi sorority and a Saint Leo College Ambassador. This is Sue's second year as an orientation leader.



Charmaine DeCastro is a senior criminology major from Palm Harbor. She is a member of Delta Phi Delta sorority and a little sister for Sigma Phi Epsilon. This is her third year as an orientation leader.



Meg Walsh is a junior elementary major from Milford, NJ. This is Meg's second year as an orientation leader.



Bernadette Parker is a junior special education major from Tampa. She is editor of the Golden Legend, president of Council for Exceptional Children, and a Saint Leo College Ambassador.



Tommy Van Etten is a senior marketing major from Cedar Grove, New Jersey. Tom is a member of Sigma Lambda fraternity. He is also very active in intramural sports.



Ross Cortino is a junior pre-law marketing major from Naples. Ross is a member of the Tau Kappa Epsilon fraternity. This is Ross' second year as an Orientation Leader.



Marisa Lloyd is a senior elementary education major from Tampa. Marisa is an International Student Association member. This is her second year as an Orientation Leader.

NOT PICTURED

Brian Knight
Valerie Woodley

Amanda French
Rick Seaver

Allison Maher

Your freshman mentor

You remember how much help Yoda was to Luke Skywalker? Well, THE FORCE will be with you as you journey through your first semester at Saint Leo College in the form of your academic mentor.

All entering freshmen are assigned a mentor. A mentor is a faculty member or administrator who can help ease the way and guide and direct you. Your mentor can help you interpret the things that you will be experiencing as a new college student.

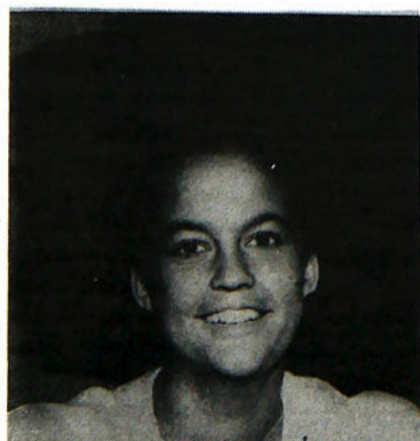
You will spend three separate sessions during Orientation with your freshman mentor learning about the courses you will take, college policies, and procedures such as registration, adding class-

es and dropping classes. You will also examine the purpose of higher education and your place in it.

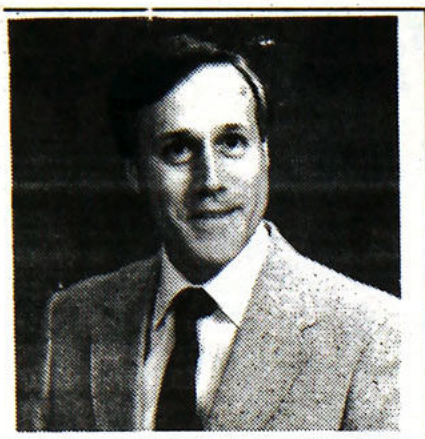
During the semester, your mentor will continue meeting with you in a one-credit course, Seminar on Self-Awareness, which is required of all freshmen.

In this seminar you will have an opportunity to deal with problems you may encounter, build your communication skills and participate in group discussions on what you can expect to get out of your college years and what you will be expected to put into them.

By the end of the semester, you should understand your place in our College community and how to work within it to attain your academic and personal goals.



Jacquie Bodino is a sophomore music education major from Dudedin. Jacquie is a member of CUB, secretary of Saint Leo/Saint Edward Hall Government, assistant editor of the Golden Legend, and a Student Government senator.



ROBERT RUDAY

A greeting from the Vice President for Student Affairs

WELCOME TO SAINT LEO COLLEGE

Dear New Student:

Welcome to Saint Leo College. You may not believe this, but you are entering college at one of the easier stages in life. There will be times when you think your experiences at College are difficult. You will have to write papers, solve problems, take lab courses, and take what you believe are unreal examinations. You will even be required to attend class! Many of these activities are demanding, but the fact is that you will be able to master the discipline to make these accomplishments a reality.

As you progress as a student, you will receive attention and caring from others. A few of these include your resident advisors and director, faculty advisor, individual faculty members and the staff who work here.

We make no promises to you. We will extend many opportunities to you. You will have the choice of taking advantage of these opportunities.

The first priority for students is to learn and to be educated. In order to remain at Saint Leo College, you must be able to perform in the classroom. In order to prepare yourself for life, you must be able to learn outside of the classroom. Take advantage of the many co-curricular activities and leadership opportunities that Saint Leo has to offer you each of you.

Sincerely,

Robert M. Ruday
Vice President for Student Affairs

Flying in?

New students flying into Tampa International Airport for Freshmen or Transfer Orientation need to return the Transportation Reply Card received previously in your summer mailing. Saint Leo College vans will be leaving the Blue area of the airport at 12 noon and 3 p.m. on Tuesday, Aug. 29, for freshmen. The vans will again be leaving the Blue area at 12 noon and 3 p.m. on Thursday, Aug. 31, for transfer students. If you have misplaced your Transportation Reply Card, please call (904) 588-8358 to reserve your place on a van.

Since travel in and out of Florida during December and January is quite crowded, students who are planning to fly home for this holiday should make their reservations as early as possible. The middle of September is not early.

Since the departure date for Christmas vacation is dependent on an individual's final examination schedule and the examinations are Dec. 14-18, we suggest that reservations be made for Dec. 19 before noon, as residence calls close at that time. Once a student knows the date of his actual departure, flights can be changed depending on availability.

Again, the middle of September

is not too early to make these reservations.

Dr. Dan Delisi, Saint Leo College's director of choirs, is full of enthusiasm for the upcoming year. "We're planning to have one of the most fun years ever for the Saint Leo Choirs," Delisi said.

Saint Leo has three very active choirs for students who enjoy singing. No experience or music reading ability is necessary to join the Chorale or the Oratorio Society. These fun groups perform a wide variety of music every year, from madrigals to jazz. There is no audition — any student may join. It's a great way to meet new friends, to get involved in campus events, as well as improve singing and music reading ability. The Oratorio Society meets Monday evenings, and performs a Christmas and Spring concert, usually accompanied by orchestra. The Chorale rehearses Monday, Wednesday, and Friday afternoons, and performs at concerts, home sports events, community functions and other places both on and off campus.

The Chamber Choir is a smaller group, open by audition to students with some singing background. It also performs both on and off campus and does a variety

\$\$ Dollars and sense

If you wish to open a checking account, the following local banks are available:

First Union Bank, Hwy. 52, San Antonio (within walking distance)
Lobby hours: M.-Th. 9 a.m.-4 p.m.
Fri. 9 a.m.-6 p.m.

NCNB, 501 E. Church Street, Dade City
Lobby hours: M.-Th. 9 a.m.-4 p.m.
Fri. 9 a.m.-6 p.m.

Sun Bank, 700 S. 7th St., Dade City
Lobby hours: M.-Th. 9 a.m.-4 p.m.
Fri. 9 a.m.-6 p.m.

Florida Federal Savings, 409 E. Church St., Dade City
Lobby hours: M.-Th. 9 a.m.-3 p.m.
Fri. 9 a.m.-6 p.m.

First National Bank of the South, 303 S. 8th St., Dade City
Lobby hours: M.-Th. 9 a.m.-4 p.m.
Fri. 9 a.m.-6 p.m.

You'll need a local mailing address before you can open a checking account. Most banks also require a picture I.D. with signature. Post office boxes are available from the U.S. Postal Service (located on campus) when you arrive. All students are required to rent a box.

The cashier's window of the Business Office, located on the second floor of Saint Francis Hall, is open from 9 a.m. to 12 noon, and 1 p.m. to 4 p.m. Monday through Friday. Students may cash personal checks with their school I.D. card.

Don't leave your parents at home

Parents' Orientation will begin at 1 p.m. on Tuesday, Aug. 29. To take full advantage of the orientation requires a bit of schedule juggling. Parents will need to arrive on campus early enough to allow time for Orientation Registration and Residence Hall Check-In. Yes, that means allowing time to take everything out of the car that it took a week to put into it!

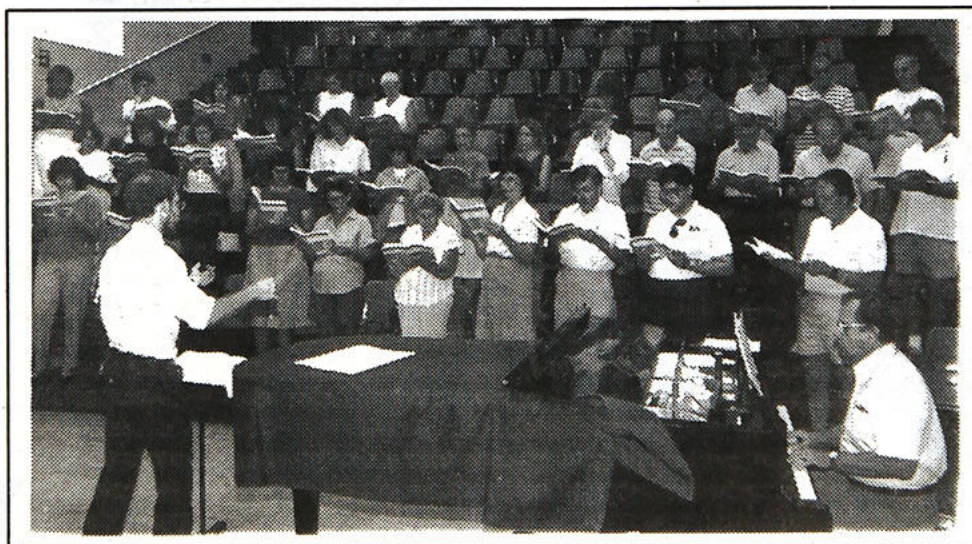
There will be a complementary open buffet in the McDonald Student Center Cafeteria from 11 a.m. until 1 p.m. The whole family will want to take advantage of the delicious buffet and to enjoy a beautiful view of Clear Lake in the cool comfort of the cafeteria. Following lunch, parents can attend the workshop designed specifically to answer questions and concerns about campus life at Saint Leo. Students are free to

return to their rooms to start settling in. Or, students are welcome to procrastinate about unpacking and migrate from room to room meeting other new students. If the afternoon calls for it, the pool will also be available for those unwilling to face unpacking.

Parents and students are invited to attend dinner in the McDonald Student Center Cafeteria at 6 p.m. Students' dinners have been covered by the Orientation fee, parents may pay \$6.95 at the door. Monsignor Mouch, president of Saint Leo College, will offer welcoming remarks to the Class of 1992 following dinner.

Parents will want to plan on leaving campus following the welcoming address. Students will begin their first Academic Orientation activities immediately after Monsignor's remarks.

Choir director plans for exciting year



of musical styles.

Sign up for the choirs when you register for your classes. They count for credit on your transcript. Three semesters in one choir can also be used to fulfill a Basic Studies — Fine Arts requirement.

So get involved! For the singing, for the credit, for the new friends, for the fun — don't miss the opportunity. Dr. Delisi, Saint Leo's choir director, loves to see new faces in his choirs! Old choir members know that if he finds out you enjoy singing, he'll try to "recruit" you for one of the choirs. "This should be one of the most exciting and enjoyable years

ever for Saint Leo Choirs," said Delisi. So why not give one of the choirs a try?

Don't forget Saint Leo has a fine jazz ensemble for students that have band experience. And any student may take private lessons in voice or guitar or any other instrument. For those with a deeper interest in music, Saint Leo offers a music major or minor. Dr. Delisi would be glad to talk to you this summer about the choirs or other aspects of music at Saint Leo. Call him at 904-588-8294 (office) or 904-521-3142 (home).

Inquiring minds want to know

Dear Orientation Leader,

What are the hours for the Snack Bar in the McDonald Student Center?

Signed: Marvin Munchie

Dear Marvin,

The Snack Bar has lots of tasty items for your "snack attacks." During the week from 7:30 a.m. to 11 p.m., the snack bar is open on the lower level of the McDonald Student Center. On weekends, the Snack Bar is open Saturday from 11 a.m. to 11:30 p.m., Sunday, from 12 noon to 9 p.m. Hours will be extended when activities are held.

Dear Orientation Leader,

Where can I find out information about getting a job? What types of jobs are there on campus?

Signed: Wanna Job

Dear Wanna Job,

The first step for an on-campus job is at the Financial Aid Office. Most campus jobs are based on financial aid and need and are part of the College Work Study Program, partially funded by the Federal Government. But, if you want to work, find out all of the possibilities and restrictions from the Financial Aid Office.

Dear Orientation Leader,

I understand that I can drop and add classes. What are the important dates and other information to keep in mind?

Signed: Full-Time Student

Dear Full-Time Student,

There are some important facts and dates to consider if you indeed drop or add classes. The last day to add classes is Friday, Sept. 9. This is also the last day to drop a class without being charged a fee of \$10.

The last day to drop a class is Friday, Nov. 4. If you do drop a class, please be sure of the consequences. Students who drop below 12 hours will not be full-time students. Full-time students may lose their eligibility for financial aid and may not be eligible to live in the resident halls.

Dear Orientation Leader,

Is there anything to do at Saint Leo at night or on the weekends?

Signed: Suzy Socialite

Dear Suzy,

You betcha!! The College Union Board plans an average of two events per week, clubs and organization about one. Couple this with all the sports events and club meetings and you may have to budget your time so you can have enough for study.

Dear Orientation Leader,

Do the instructors really spend time with the students? Do they care?

Signed: Shy and Timid

Dear Shy and Timid,

Yes! Yes! Yes! The instructors at Saint Leo College have a com-

mitment to students, and the philosophy of our school is very people oriented. You will find that all the students appreciate the dedication of the staff.

Dear Orientation Leader,

When is the pool open during the academic year?

Signed: Mark Spitz

Dear Mark,

You still do keep in shape after winning all those Olympic gold medals, don't you! The schedule for the pool is as follows:

Weekdays — 10 a.m. sunbathing; swimming 2-6 p.m.

Weekends — 10 a.m. to 6 p.m. — sunbathing and swimming

Dear Orientation Leader,

Where can I rent a refrigerator for my room?

Signed: Penguin Encounter

Dear Penguin,

I have to get over to Sea World to see your new attraction. But, while you are on campus, contact the Business Office for a refrigerator. They will take applications on Sept. 3 and 4. Please bring a \$10 deposit with you. They will give you further information.

Dear Orientation Leader,

Can you tell me who is in charge of Campus Ministry and where are they located?

Signed: Wanting to be an involved Christian

Dear Involved,

The Campus Ministry is headed up by Sister Geraldine Warthling, O.S.F., and Father Leo Schlosser, O.S.B., is the campus minister. The offices are located in St. Edward Hall. You have an open invitation to visit — bring a friend!!

Dear Orientation Leader,

When do grade advisories come out during the semester? What happens to them? Where do they go?

Signed: Studios

Dear Studios,

All unsatisfactory mid-semester grades are known as advisory grades. The faculty submits advisory grades to the Records Office at midterm (Oct. 24 this semester). These advisories are sent to your home address, so your parents will know if you are indeed studios.

Dear Orientation Leader,

I am a transfer student. May I pledge a Greek organization during my first semester?

Signed: Jimmy The Greek

Dear Jimmy The Greek,

Transfer students may pledge if they have at least 12 transferable credits and a grade point average of at least 2.0. First semester freshmen or transfers with less than 12 credits are not eligible to pledge a social Greek organization.



Moving into your residence hall room is a time-consuming task. If you'll just unpack the essentials the first day, you'll allow yourself time to decorate at leisure. You're sure to find a lot of innovative ideas just down the hall.

RESIDENCE LIFE

Notes to Note

WHAT ARE THE VISITATION HOURS FOR THE RESIDENCE HALLS?

Visitation hours are from noon to midnight, Monday through Thursday; noon to 2 a.m. Friday; 9 a.m. to 2 a.m. Saturday; and 9 a.m. to midnight on Sundays. Male guests to Marmion, Snyder and Priory Halls must sign in at the hall's front desk and leave an ID card. There is 24-hour visitation in the Marmion/Snyder Lounge. Visitation outside of these hours is a violation of Residence Hall policy. Compliance with all policies is essential and expected. Violating the visitation policy will result in a discipline conference with a Residence Hall staff member. Sanctions depend upon circumstances and could range from a warning to probation or completion of a task. A repeated violation will result in more severe sanctions, including removal from the residence halls.

IF I HAVE A PROBLEM WITH MY ROOMMATE OR ROOM, WHAT SHOULD I DO?

If you have a problem with your room, you should talk to your Resident Assistant. If maintenance is required, they will refer the problem to the maintenance staff. If you are unhappy with some aspect of your room, your RA can help you resolve the problem, or advise you about the room change process.

If you have a problem with your roommate, the person you should talk with is your roommate. Most concerns and difficulties can be resolved by talking openly and honestly with each other. Most problems that do occur or persist

result from not enough communication between roommates. If you have a concern, talk to your roommate. They may not be aware of your concern. Don't leave each other notes. Communicate face to face. It's harder, but more personal and you can state your feelings concisely and clearly. Talk about how their actions make you feel, but don't criticize them. Think about how you would like to be told something. Most importantly, listen to your roommate. A successful roommate relationship depends on cooperation, consideration, respect and compromise.

If you still have problems, talk to your RA. They can help you come up with solutions, or can even serve as a moderator. The worst thing you can do is not to talk to anybody about the problem, especially your roommate.

HOW DO I PICK UP MY PACKAGES THAT I SENT TO THE SCHOOL BEFORE I ARRIVED?

Contact your RA about times to claim your packages. Residents of Henderson and Benoit can pick up their packages in the storage area located in each building. Roderick residents can pick up their packages in Benoit. St. Leo and St. Edward students need to go to the lobby area of St. Edward during the designated times. Residents of Villa, Priory, Marmion and Snyder should go to the Marmion/Snyder front desk for the exact location of their stored packages. Packages can only be retrieved during designated times. These times will be posted, and are also available from your RA.

Home away from home

The Office of Residential Life welcomes you to Saint Leo College and to our residence community! In the coming months, you will experience many new opportunities for learning, both in the classroom and your residence hall. You will be challenged with new roles and responsibilities and will discover much about yourself in the process.

The Residential Life staff is here to help you through the changes and difficult times that can be a part of any new experience.

As a new resident, or even as a veteran resident, you probably have many questions regarding your residence community and the campus. The information in this article will, hopefully, answer some of your most immediate questions, and the hall staff and other members of the College community will gladly help you with the rest.

WHO'S WHO

First of all, an RA, short for Resident Assistant, is a full-time student who lives on your floor. This person is a trained staff member who is interested in working with other students. The RA assists you if you have maintenance problems, plans social activities, explains and enforces College policies and regula-

tions, and is there to listen to any other problems you may have... just to mention a few of their areas of expertise.

A Resident Director is also someone who lives in the residence hall. This person is a professional staff member who is responsible for the overall operation of your hall and supervises the Resident Assistant staff. Your Resident Director is interested in meeting you and working with you.

Finally, the custodial staff is that hard-working group who help keep your bathrooms and buildings clean. You are responsible for the care of the rest of your living quarters. It is important to cooperate with them and thank them for doing a good job.

WHAT DO I NEED TO BRING?

When planning what to bring with you, it is important to keep in mind that you will be sharing a room with someone else. It is a good idea to contact your roommate and decide who is bringing what (stereos, televisions, refrigerators, etc.).

The only cooking appliance permitted in Saint Leo College Residence Halls is a microwave oven. Coffee makers, hot pots, toaster ovens and other cooking appliances are not permitted. You may have a refrigerator up to 4.5

cubic feet; 2.5 cubic foot refrigerators can be rented through the business office.

You will also need to bring linens with you. Sheets, towels, pillowcases, pillows, washcloths and other linen items are not provided.

If you decide you would rather wait until you arrive to purchase any of these items, just ask your Orientation Leader where the best shopping is located!

An item that you need to leave at home is your favorite pet (unless your pet happens to be a fish). Although we want you to feel at home, it really isn't fair to the animal or other community residents. Besides, we have a deal with Busch Gardens—we don't house animals and they don't house people. Feel free, however, to bring as many stuffed animals as you would like.

ROOMMATES...

For most of you, living with a roommate is going to be a new and exciting experience. It can be the start of a great friendship if you want it to be. A roommate is someone you can laugh, study, ask for advice, go shopping and gab with. Also, family may be far away, and a roommate is someone who can often take your mind off being a little homesick. (You may try talking to him/her about it. Many times he/she is in the same boat you are!)

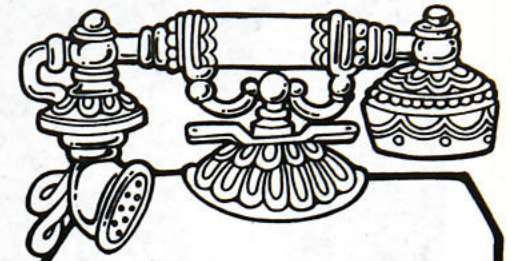
In order for a roommate experience to be positive, you may need to explain your needs and expectations. That person will, in turn, need to do the same. Too often you may assume that your needs are the same as your roommates' concerning privacy, study time, borrowing clothes, boyfriends/girlfriends, etc. By confronting these concerns in the beginning, you will learn each other's limits and avoid many conflicts. But remember, like any other relationship, it is not always going to be rosy. You will have to work together to make it as good as it can be.

YOUR ROOM...

Another mutual decision you and your roommate will have to reach is how to decorate your room. We encourage you to personalize your room so that you feel comfortable. Put up posters, coordinate your curtains and bedspread - the possibilities are truly endless.

In some of the halls, you may construct a loft. Be sure to check with your RA or RD before you make any drastic changes to make sure it is within regulation!

SAFETY AND SECURITY
...A JOINT RESPONSIBILITY
Although the Residential Life



PHONES

Each room is equipped with a phone jack that gives you access to the campus phone system. You will need to bring your own phone. In order to make long distance calls, you will need to apply for an access code. You can pick up more information about long distance access codes in the Campus Store.

staff strives to develop a community environment in the halls, it is important that you always lock your room door (even when you're home or just down the hall). Your safety and security is extremely important to us, but this is a responsibility all members of the community must share. Please remember to carry your keys with you at all times!

WHAT IF...?

You're not sure where to do your laundry? You aren't clear about visitation rules? You need to see the RD and can't seem to find him/her? Ask any member of the Residential Life staff. If they don't know the answer, they are trained to find someone who does!

ARRIVAL

We are very excited about your pending arrival on campus! Check-in day is bound to be hot, so be prepared. You may be moving your items up or down stairs, so dress comfortably.

You will have plenty of time to unpack. Don't try to do it all on the first day! Become comfortable with your surroundings, get to know your roommate, your RA and your floor neighbors. And most of all—Relax! Enjoy everything that Orientation has to offer, and get ready to have a great year!

See you in the halls,
The Saint Leo College
Residential Life Staff

DON'T FORGET...

If you have a question, call us!
We can be reached at

(904)
588-8358

from
Monday through Friday,
8:00 a.m. to 4:30 p.m.



New faces will line the hallways of your residence hall your first night on campus. Residence hall policies, procedures and activities will be explained by your Resident Advisor (RA) during your first floor meeting.

AN IRREVERENT GUIDE

Language you can't live without

A. Academic Probation: If your cumulative grade point average falls below a certain level. It's something you don't want to be on, check the catalog.

Academic Year: Period including fall and spring semesters.

Advising: Process of academic information-giving and/or advising offered by various academic divisions. The process by which you learn that you won't be able to register for upper division courses without first completing your lower division requirements.

Audit: Taking a course for no credit—for the fun of it!

All-Nighter: When your documented essay is due tomorrow, and you've only got your name written down.

B. Blue Book: Little blue book with lots of blank pages you use to take an essay exam.

Bowl: As in The Bowl. Grassy area located behind the McDonald Student Center and bordered by Clear Lake. It is a great place for bands to perform!

Burnout: A state of mental and physical fatigue brought on by an all-nighter, combined with the most difficult exam you've ever taken.

C. Cage: As in The Cage. Area in the lower level of McDonald Student Center with the Snack Bar, games and entertainment every Wednesday night.

Care Package: Cookies that your mother sends that your roommate eats.

Circle: As in The Circle. Round grassy area in the middle of the parking lot outside Benoit, Roderick and Henderson. It's a great place to throw a Frisbee and park your car if you want to get towed!

Class: Regularly scheduled meeting of an academic course. Unfortunately, attendance is not an option. To pass a class, you must show up.

CLAST: College Level Academic Skills Test—All sophomores take this test during their second semester. You need to pass it to graduate.

College Union Board: A student-run programming board responsible for planning campus entertainment. A group of very fun people.

Counseling: When you have just broken up with your girlfriend or don't know what you want to do with your life, check out the counseling services.

Credit Hour: The unit of credit is a semester hour defined as 50 minutes of class time. An

average class load per semester would be 15 hours (or about five classes).

Cum GPA: Grade Point Average, a cumulative average of all the grades received from courses taken.

Curriculum: A specific set of courses required to achieve a degree.

D. Daily Say-So: Daily publication from the Student Development office that lists scheduled meetings and activities. It is posted on the walls of administrative and academic buildings. It's official graffiti!

Degree: The title given as official recognition of completion of a curriculum. A Bachelor's degree is usually what you achieve first.

Drop-Add: Process by which you can change your schedule free of charge. Last day to add a course is Friday, Sept. 9. Last day to drop a course without a \$10 charge is also Sept. 9.

E. Elective: A course you can take that isn't required by your curriculum.

F. Final Exam: Test given at the end of a course, usually covering all the material taught during the course. This one usually makes or breaks you.

Freshman Exit Exam: A test you must take during your second semester as a freshman. You must pass it to become a sophomore.

G. Graduation: Something that seems to take so long to get here but always comes too soon.

Greeks: Persons who belong to a fraternity or sorority named with Greek letters.

GJ's: The College's remedy for the midnight munchies—pizza!

H. Highlighter: The reason your used school books have all those yellow lines through them.

I. IFC: InterFraternity Council, the governing body for fraternities on campus.

Intramurals: Recreational sporting competition open to all students. The office is in the Marion Bowman Activities Center.

K. Kent Chapel: The regular location of Campus Ministry Mass, located immediately outside the McDonald Cafeteria entrance.

L. Leadership '89: Select group of freshmen and sophomores who participate in a seminar for emerging leaders.

M. Major: The field of academic study you might change at

least seven times during your college career.

Mall: Long grassy strip in between Saint Edward Hall and Saint Francis Hall.

Midnight Munchies: A highly contagious collegiate disease which usually strikes after "Late Night with David Letterman." It is the leading cause of the "freshmen ten." (For remedy, see GJ's.)

Midterms: A period in the semester when your stress level increases immensely.

Minor: The field of second academic emphasis or someone who can't get into bars. Also the Director of Residential Life—Frankie Minor.

Monarch: Student newspaper at SLC. Look for it at newsstands on campus!

P. Panhellenic Council: The governing body for sororities on campus.

S. Saint Leo College Ambassadors: A select group that works with the Special Assistant to the President as the official hosts and hostesses of the College.

SGA: The Student Government Association is the student governing body that works and offers special programs for you, the student. A great way to get involved!

Syllabus: Schedule of homework and reading assignments.

T. TBA: (It's not a building.) This abbreviation usually indicates a class that is To Be Announced.

Transcript: A summary document of your college academic course work and performance. That is to a job interview what a criminal record is to a parole board.

Tuition: Monies required to register for classes.

FREE!



Musician **RICK KELLEY**

Appearing in **THE CAGE - 9P.M.**

Saturday, September 9th, 1989

Brought to you by **CLUB-**

FREE FREE FREE FREE

BASIC TRAINING 1990

Develop your Leadership style and skills in this Spring Seminar. Learn how to:

- Organize your time and tasks
- Lead an organization
- Be effectively assertive
- Tap your creative powers
- Communicate with others
- Take the initiative
- Be persuasive
- Get results

Be a LEADER !!

For information contact :

BRIAN CHASTEEN
Student Development Office
McDonald Student Center
(904) 588-8358

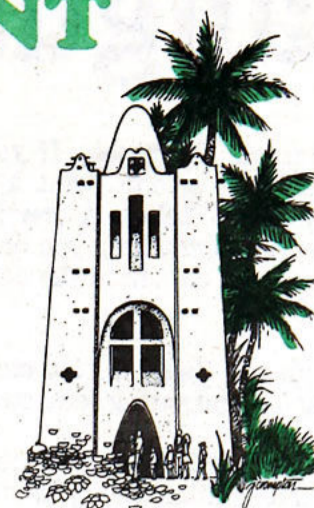
THE DARK CONTINENT

BUSCH GARDENS®

TAMPA, FLORIDA



ADVENTURE ISLAND™



INTEREST INVENTORY

Do you have any experience or interest in becoming involved in activities? If so, please check off those of interest to you and return to:

Robert M. Ruday, P.O. Box 2156, Saint Leo, FL 33574

- | | |
|--------------------------------------------------------------------------------|-----------------------------------------------------------------------------------------|
| <input type="checkbox"/> Aerobics | <input type="checkbox"/> Interdisciplinary Forum |
| <input type="checkbox"/> American Marketing Association | <input type="checkbox"/> Knights of Columbus |
| <input type="checkbox"/> Amnesty International | <input type="checkbox"/> <i>Monarch</i> (student newspaper) |
| <input type="checkbox"/> Art Club | <input type="checkbox"/> Oratorio Chorus |
| <input type="checkbox"/> Campus Ministry | <input type="checkbox"/> Saint Leo College Debate Society |
| <input type="checkbox"/> Chamber Choir | <input type="checkbox"/> Residence Hall Association
(plans resident hall activities) |
| <input type="checkbox"/> Cheerleader | <input type="checkbox"/> ROTC |
| <input type="checkbox"/> Circle K Club | <input type="checkbox"/> Saint Leo College International Student Association |
| <input type="checkbox"/> Class Officer | <input type="checkbox"/> Saint Leo Stage Band |
| <input type="checkbox"/> College Chorale | <input type="checkbox"/> Student Government Association Committee Member |
| <input type="checkbox"/> College Union Board
(plans activities campus-wide) | <input type="checkbox"/> The Magazine (literary magazine) |
| <input type="checkbox"/> Council for Exceptional Children | <input type="checkbox"/> Other (please list) |

- Golden Legend (yearbook)
- Hotel Sales and Marketing Association

NOTE: Fraternities and Sororities are not listed due to special membership requirements. Detailed information will be available during the semester.

NAME (Please Print)

ADDRESS

CITY STATE ZIP

FREQUENTLY CALLED NUMBERS	General Campus Information	(904) 588-8200
	President's Office	588-8241
	Academic Affairs	588-8244
	Admissions Office	588-8283
	Alumni Relations	588-8250
	Athletics	588-8221
	Daniel A. Cannon Memorial Library	588-8258
	Educational Services	588-8236

Financial Aid	588-8270
Institutional Advancement	588-8248
Military Education	588-8206
Office of the Special Assistant to the President	588-8252
Registrar	588-8235
Student Affairs	588-8266



P.O. BOX 4010
SAINT LEO, FL. 33597-2227

Non-Profit Organization
U.S. Postage
PAID
PERMIT #2
Saint Leo, FL 33576

