



## Divisions undergo restructuring

By Michelle G. Berens  
Editor

A reorganization of Saint Leo College's (SLC) academic divisions took place this summer. Six divisions have been restructured into three, to give each academic program better focus: Liberal Arts and Science, the Division of Business Administration, and the Division of Education and Human Services. As much

as possible, the faculty belonging in each division grouped together in a specific building.

The purpose of the reorganization, says Vice President for Academic Affairs Dr. Daniel R. Hoeber, is to allow the administration and faculty to become better organized to academically serve SLC students. SLC President Monsignor Frank M. Mouch is certain that the reorganization will "...consolidate the divi-

sions to facilitate the planning of courses in relation to each other".

The physical moves, believes Hoeber, helped people realize that the reorganization is not only written on paper, but that it is indeed an important change for the College. Hoeber wants the instructors in each division to "...interact and see themselves as part of that division."

The Division of Business Admini-

stration faculty remains in the Faculty Office Building (FOB). Some faculty of the Division of Education and Human Services have moved into the FOB. However, the Physical Education staff (part of the Division of Education and Human Services) still occupies the athletic building. Instead of relocating to Saint Leo Hall, the Biology and Chemistry faculty have stayed in Lewis Hall where their labs are.

## United Faculty provides student book grant

By Michelle G. Berens  
Editor

The United Faculty of Saint Leo College donated \$300 toward a student book grant.

The \$300 check was presented to Sister Geraldine Warthling, Vice President for Student Affairs, on Thursday, September 10, by United Faculty President, Professor David Frankel.

Student Affairs or Campus Ministry will administer the grant, while Sister Geraldine will maintain ultimate responsibility for determining which students are eligible to receive part of the endowment. The contribution is to assist students having financial difficulty.

Sister Geraldine immediately signed the check over to the Campus Store, so that authorized students will be able to receive books.

Professor Frankel said that the funds remaining from the last fiscal year's budget were used for the United Faculty of Saint Leo College Student Book Grant.

The United Faculty, said Frankel, would like to have a fund raising drive in the spring, and "we hope to have a drive every summer to at least match our amount this time," he added.

Frankel commented that the United Faculty hopes to increase funds so that more SLC students with financial need will be capable of purchasing books.



Professor David Frankel presents Sister Geraldine Warthling with a \$300 student book grant on behalf of the Faculty Union. *Special to the Monarch*

## Committee formed for disabled

By Thomas Turcotte  
Associate Editor

A new committee has been formed to deal with the problems of the disabled on the Saint Leo campus. The committee was formed in response to the recent enactment of the Americans with Disabilities Act, which requires that certain accommodations be made for handicapped individuals. There is a list of compliance dates that are mandatory for all institutions receiving public funding.

For the time being, the committee is determining what changes need to be

made in order to reach compliance with the act. They are slowly examining the campus in an effort to determine where changes need to be made.

Richard Reeves, Programmer/Trainer and a committee member who is disabled and relies upon a wheelchair, is helping them by showing what someone in a wheelchair would face, according to Bob Campbell, academic advisor and committee member.

While these are only initial actions, eventually suggestions will be offered as to where the changes should be made.

## Paulsens restore campus statues

By Glenn Ladwig  
Design Editor

A recent improvement has been made to the beauty of Saint Leo College. Mar- yam Paulsen, Secretary of Student Af- fairs, and her husband Cal Paulsen do- nated their time and effort in painting the three statues in the front of Saint

Edward Hall. "It was a shame for those statues to be in the shape they were in", said Mrs. Paulsen.

The painting duo took on the task when they learned there was no one available to restore the statues. It took them four laborous hours to complete the job. The three statues are of Mary, Saint Francis, and Saint Edward (crowned).

## Card helps women say no to rape

By Amanda Smith  
Scripps Howard News Service

"What you should do to prove that you have been raped by an acquaintance: You should say to him: 'No. I don't want sex with you. This is rape. Stop raping me.' Resist. Report the assault immediately."

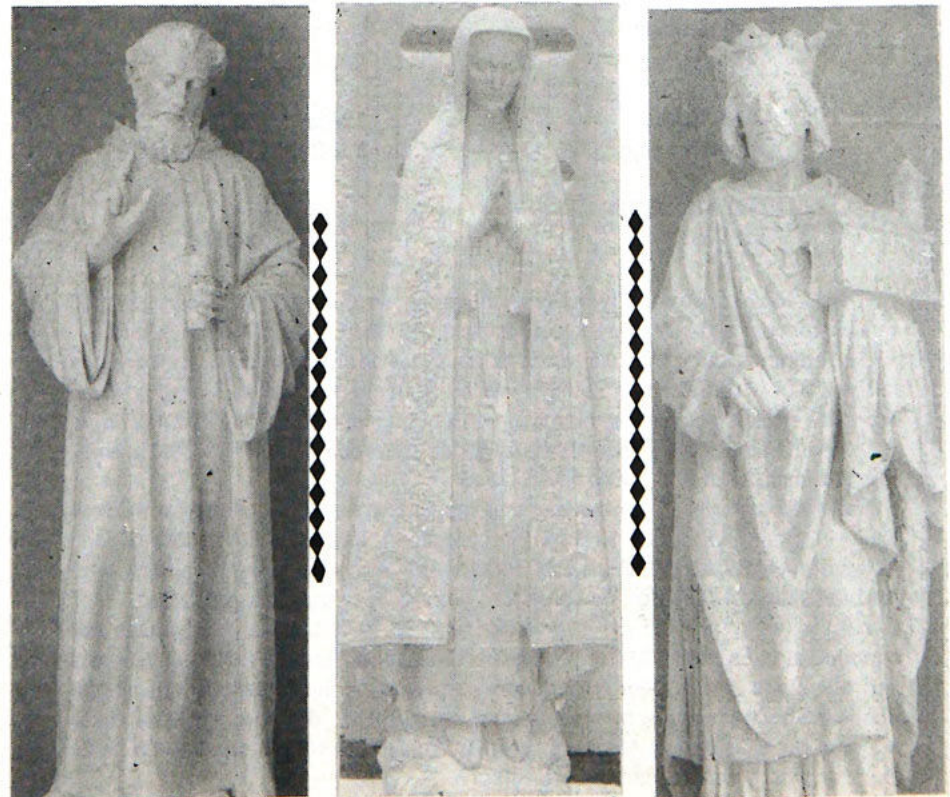
So reads the text of a yellow card printed by SafeSkills, a self-defense school, in response to a recent announcement by Orange County, N.C., District Attorney

Carl Fox.

After an acquaintance-rape trial in which the defendants were found guilty, Fox took a useful action. He laid out, based on current state law, his interpretation of exactly what a woman would have to do in order for him to successfully prosecute an acquaintance rape.

"When I hand this card to women, they take one look and say, 'What a great idea!'" They are not responding to the fair or unfair burden of proof these requirements place on women. They are responding to the fact that this card tells a woman exactly how to say "no."

The phrase "women don't know how to say 'no'" is often taken to mean either an unwillingness to hurt anyone's feelings (not even a rapist's) or some kind of all-purpose ineffectiveness. Watching these women's reactions to the card has taught me that women may literally not know the words to say.



From L - R, Saint Francis, Mary, and Saint Edward.

## Index

- Editorials.....2
- On-Campus.....4
- Spotlight.....5
- Sports.....6

Please turn to DATE RAPE, page 6



## What is the future for the greeks?

By Thomas Turcotte  
Associate Editor

In the past, Greek organizations have been primarily, if not totally, social organizations. Fraternities and sororities have placed little, if any, emphasis on academics. There are, however, some changes evident on the horizon. The National Greek Organizations have begun putting pressure on the local chapters in the form of placing more stringent guidelines on the fraternities and the sorori-

ties by requiring that they place more emphasis on academics. These pressures are working in conjunction with Saint Leo College's own demands. There are, and will be, several examples of these academic improvements throughout the semester.

For the present, the changes are primarily affecting those newly pledging a Greek Organization. First, pledges are now required to spend eight hours a week in a supervised study hall, as it is a well

known fact that the Greek organizations do not offer the pledges many opportunities to attend to their class work. The study hall should help alleviate that problem. Second, the pledges are required to have their professors fill out progress reports throughout the semester. This is similar to the reports used by students participating on the sports teams. If at any point the progress reports are unsatisfactory, the pledges can and will receive restrictions up to a possible termination of their right to pledge.

If the Greek organizations continue their past record of poor academic progress, then their days are numbered on America's college campuses. Only through implementing and following these changes and guidelines will the Greek system survive. Hopefully, they will abide by these changes and, as a result, improve academically. The Greek organizations at SLC have been cooperating, and it seems likely that these guidelines will result in positive changes for the fraternities and sororities on campus.

### Frankly Speaking

by Phil Frank



© CREATIVE MEDIA SERVICES



© CREATIVE MEDIA SERVICES

## MONARCH

1989-1990 ASPA First Place with Special Merit  
1989-1990 CPA Second Place with Special Honors  
1988-1989 ASPA First Place Winner

Editors:  
Michelle G. Berens, Editor  
Thomas Turcotte, Associate Editor

Design Editor:  
Glenn Ladwig

Photo Editor:  
Margo Bednar

Copy Editor:  
Ron Broz

Business Manager:  
Paulina Hamilton

News Editor:  
Kim Weissman

Staff Writers:  
Dana Jeffers & Donna Rail

Office Manager:  
Kim Weissman

Advisor:  
Judith Rochelle

The *Monarch* is a biweekly student publication, written by the students, designed by the students and published in conjunction with the Office of Public Affairs.

The opinions and stories expressed in the *Monarch* are not necessarily the views of the Editor or of Saint Leo College. We invite all old and new students to join the *Monarch* staff. If you have any input into this publication, send it to: The *Monarch*, P.O. Box 1, Saint Leo, FL 33574, stop by or call the *Monarch* office located in Saint Edward Hall, room 238, (904) 588-8355.

Full responsibility for the material that appears in this publication rests with the Editorial Board. Opinions expressed in columns or letters are not necessarily the views of the editors or of Saint Leo College. Editorials appearing in the *Monarch* are published with the express consent of a majority of the Editorial Board.

All Letters to the Editor must be typed, double-spaced, one side on a page and contain a maximum of 250 words. All letters must be signed and include an address and telephone number for verification purposes. Unsigned letters will not be published but names may be withheld upon request. Due to limited space, all letter may not be printed. The *Monarch* reserves the right to edit letters. The opinions expressed in letters are those of the author.

Please submit letters to the *Monarch* Office, room 238 in Saint Edward Hall or to the Office of Public Affairs, room 7 in Saint Francis Hall the Monday ten days prior to publication.

### Monarch Meeting

Where: Saint Ed's, rm. 238  
When: Every Monday at 4:30 p.m.  
(Earn 5\$ for every story you write)

### President's Corner

I was happy to see that students have begun to utilize Channel 57 for live broadcasts. Obviously, the opening production provided the opportunity for the "stars" to have fun, and I hope that future programs will show a developing professionalism. There are all kinds of uses to which the channel can be put for the good of the campus community.

A recent report on the use of alcohol and drugs reached my desk this week. Here are a few of the results of the study of American college students.

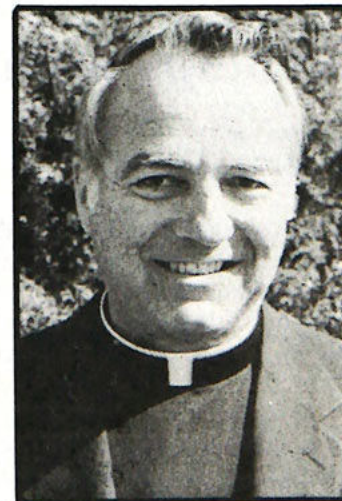
- The use of alcohol is more frequent on four-year campuses than on two-year. (Students on four-year campuses are more aware of their schools drug and alcohol policy than those at two-year schools.)

- On four-year campuses, traditional students (less than 24 years old) drink at more than twice the rate of non-traditional.

- The consumption of alcohol rises as the size of the school diminishes.

- More than half the students do not consume five or more drinks within a two-week period.

- The use of alcohol is inversely proportional to the level of academic per-



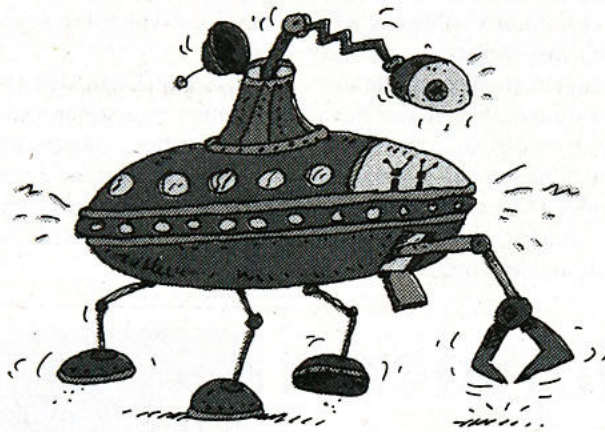
formance: the more you drink, the lower your GPA will be.

- 73% of students report no use of marijuana in the last year.

- There is a positive correlation between the use of alcohol and the individuals preference for the availability of drugs.

Theres good news and bad in this report, but it surely points out that alcohol and drugs have an adverse influence upon college life and academic performance - and the rest of life was not addressed!





"You know, it's so ridiculous. If I don't call my parents every Sunday at exactly 5 o'clock, they think I was kidnapped by aliens, or something. Anyway, one Sunday me and Mark, we decide to take-off and check out the city. So we're hanging out and I look at my watch. 5 o'clock. Alright, so my calling card and I head down to the local pool hall. (Which I happen to know has a payphone.) And I tell the folks the Martians send their best."

**N**o matter where you happen to be, the AT&T Calling Card can take you home.

It's also the least expensive way to call state-to-state on AT&T, when you can't dial direct. With the new AT&T Call and Save Plan, you'll get special discounts on AT&T Calling Card calls.\* And once you have your card, you'll never need to apply



for another.

If you get your Calling Card now, your first call will be free.\*\* And you'll become a member of AT&T Student Saver Plus, a program of products and services that saves students time and money.

All of which makes the AT&T Calling Card out of this world.

To get an AT&T Calling Card for off-campus calling, call 1800 654-0471 Ext. 850.



© 1992 AT&T. \*Pending FCC approval. Please call above 800 number for details. \*\*You'll receive one \$3 AT&T L.D. Certificate equivalent to 22 minutes of card or direct-dialed, coast-to-coast, night and weekend calling based on rates effective 6/8/92. You could get more or fewer minutes depending on where or when you call. Offer limited to one certificate per student.



# ON-CAMPUS

## Colby explains credit transfers

By Dana Jeffers  
Monarch Staff Writer

Many students attending Saint Leo College or any other private institution may be under the misconception that students lose credits when they transfer. Registrar Fred W. Colby, however, says that this is not true. Mr. Colby explains that when students transfer, they don't lose credits, the credits just are not applied.

According to Mr. Colby, transfer credits are accepted as elective credits. This means that the credits are not put towards any required courses such as Math, Science, English, etc., which are similar to Saint Leo's Basic Studies.

Students needing the credits accepted as requirements, however, can do so according to the Gordon Rule. The Gordon Rule is an agreement among colleges and universities establishing guidelines for degree seeking students.

In the University of South Florida Catalog, the Gordon Rule states: Prior to receiving an Associate in Arts degree from a public community college or university or a Bachelors degree from a public university, a student shall complete successfully.... If a student does in fact meet the criteria, their credits are transferable and acceptable. The criteria in the Gordon Rule includes Twelve semester hours of English in which the student is required to write 6,000 words. Also six

semester hours of college level algebra is required. The Saint Leo College catalog(92-93) states that the Gordon Rule is actively promoted at this campus.

Mr. Colby said that a transfer student who needs to have their credits put towards required courses can do so by the following:

1. Contact the Dean of the Department for which the student earned the credit.
2. The Dean will then contact the specific professor and see if the Gordon Rule has been successfully met.
3. The professor will then write a letter to the college or university and say that the Gordon Rule has been met by the student.

After this, the credits will be applied towards the required course.

Some colleges only accept credits from ten years ago or later, but Saint Leo will accept credits from as far back as twenty-five years. These cases are looked at on a case by case basis.

Another factor in determining transfer credit acceptance is whether or not the school is accredited. A school must meet certain eligibility requirements and then apply for accreditation. Saint Leo College is a regionally accredited school and will only accept credits from other accredited schools. For example, The University of Tampa is an independent university and is not regionally accredited. Therefore transfer credits from there will not be accepted by Saint Leo.

## SLC offers employment

By Kimberly Weissman  
News Editor

Money is always on the mind of hard working college students at Saint Leo. Some students would like to earn a little extra money to allow themselves a fun weekend in Tampa, while others are saving a portion of their paychecks to help pay for school, a car, clothes, etc.

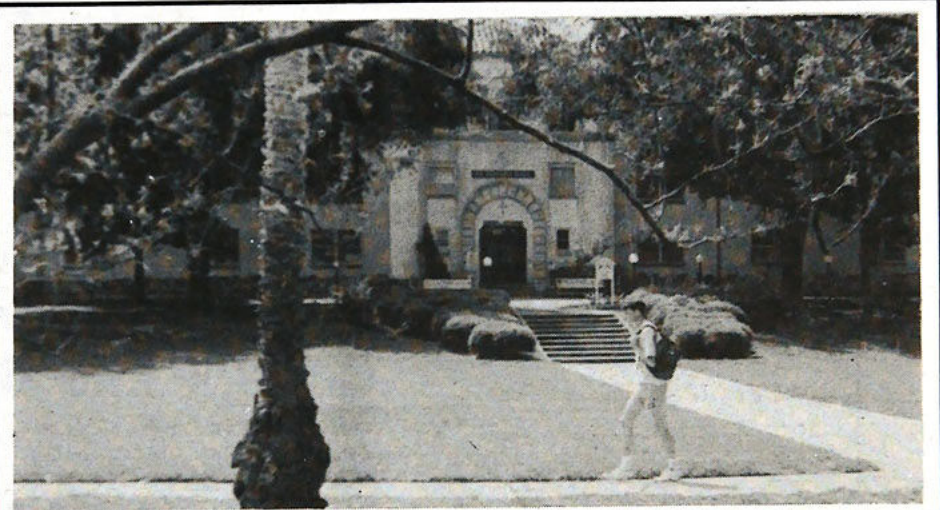
Saint Leo College offers part time jobs as assistants in many of the different offices and departments all over campus. These assistants are really appreciated because they help with a share of the work, and an extra hand is always needed.

When asked why she works on campus in the school bookstore, Beth Callan

responded, "It's a good way of making money without leaving the campus." Her duties on the job include cashier, ticketing books, stock, and inventory.

Another student, who enjoys her part-time job on campus in the Reading Lab, is Reggie Fox. She acquired her job through Financial Aid, as many students do, and her duties include signing students in and out of the lab and assisting with their assignments.

These on-campus jobs are also beneficial to students because of the learning aspect from a new job experience. Anyone interested should ask in the Financial Aid Office today.



Student passes Saint Edward Hall on his way to classes. *Special to the Monarch*

## Program offers self improvement

By Ron Broz  
Copy Editor

Have you ever wanted to get into shape, but didn't want to do it alone? Have you ever wanted to learn and develop leadership skills, but didn't know where to go?

Here's a solution to both dilemmas that most people never realize.

Ready? You can participate in physical training sessions and leadership classes with the people in the Army's Reserve Officer Training Corps (R.O.T.C.) without actually joining. Says Sergeant Ma-

yor McLaughlin: "As long as you don't wear the uniform or go to the labs in Tampa, you don't even have to cut your hair."

P.T. (physical training) sessions start at 6:30 a.m. on Monday, Wednesday and Friday and end at about 8:30 a.m., so it doesn't conflict with most class schedules.

For more information about P.T. sessions or the leadership classes, contact Sergeant Major McLaughlin in the R.O.T.C. office, or call ext. 8256.

## Career Corner

It is never too early to begin your career development. Come by the Career Development Center in Saint Edward Hall to begin your search into career fields and majors. Below are just a few tips that FRESHMEN students can do to strengthen future employment opportunities.

#1 Develop good study skills; use the Writing Center and Math Lab, ask your instructors for assistance.

#2 Participate in class; be active in class discussions and ask questions if you do not understand the material.

#3 Learn time management skills; don't let assignments and deadlines get away from you.

#4 Establish personal and academic goals; get a GPA goal and work toward it using the above tips; set goals for each semester as well as for when you finish college.

#5 Participate in campus activities and organizations; future employers like to see that their future employees got involved in campus clubs and dedicated themselves to a principle or cause.

#6 Attend career awareness activities on campus such as Career Day on November 18th.

#7 Get to know your professors; they are a great source for career exploration not to mention job possibilities.

#8 Explore possible majors; use the resources in the Career Development Center and talk to professors about the majors offered here at Saint Leo College.

### JOB

Swimming Pool Attendant needed at Saddlebrook Resort to work weekends and evenings. Schedule will be flexible and pay is \$5 per hour. Applicant must have a Lifeguard Certification. If inter-

ested, please contact Ms. Michelle Paul, Director of Guest Relations, at 973-1111 extension 4209.

### SCHOLARSHIP

Applications for the 1992 Tylenol Scholarship Program are now available in the Career Development Center. Scholarship award is based on leadership in community activities and school activities. Any student may apply.

### INTERN PROGRAM

The Dow Jones Newspaper Fund is offering to all college juniors and seniors the opportunity to apply for the 1993 Newspaper Editing Intern Program. The program offers a grant to attend a pre-internship editing residency, guaranteed summer editing internship with pay, and a scholarship or loan repayment for undergraduate or graduate studies. For an application or more information, come to the Career Development Office. Deadline for submitting applications is November 15, 1992.

### STUDENT OF THE YEAR AWARD

Florida Leader magazine is now accepting applications for the "Florida College Student of the Year" award. The prestigious award recognizes students who support themselves through school, demonstrate academic proficiency, and are involved in community service, philanthropies and political activism. As a reward, the winner and runners up will earn more than \$30,000 in scholarships and prizes. The deadline is February 1, 1993. If you are interested in applying, please come by the Career Development Center.

## DON'S TOWING AND AUTO SALVAGE

24 HOUR TOWING

Engines • Transmissions • Tires • Body Parts

Mechanic on Duty

OPEN 7 DAYS

4175 Pasco Road

San Antonio, FL 33576

904-588-3828

We accept Checks, VISA and Mastercard





## Bauer wins honorable mention in poetry contest

By Michelle G. Berens  
Editor

Charla Bauer, senior English/Writing major, won an Honorable Mention in *Lyric* magazine's 1992 College Poetry Contest for her poem "Saturday's Symphony". Her poem was selected from among nearly 900 others.

Kurt Van Wilt, instructor of Saint Leo College's poetry writing course, gave his

students the assignment of writing an original traditional poem. Because the criteria of the class assignment met the criteria of the contest, Van Wilt encouraged students to enter their poems in the *Lyric* poetry contest. Bauer was one of those students.

She did not anticipate her poem's winning in the contest, but she received a letter on August 1 from *Lyric* congratulating her for an award of honorable

mention. "I was in a state of shock for several hours!" she maintained.

Bauer also won \$25 and a one-year subscription to *Lyric* beginning with the fall issue.

What did she do with the \$25? "I bought groceries!"

*Lyric* was founded in 1921 and is the oldest magazine in North America in continuous publication devoted to traditional poetry.

### Saturday's Symphony

I lay upon a double bed,  
There was such room for me.  
A pillow pumped about my head,  
My arms and legs were free.

I lay awake one weekend morn,  
My world seemed free of care,  
A pleasant noise on wind was born  
To bring me solace there.

A mower beat a steady tune,  
A softly whirring drone,  
A song sung low without rune,  
A music mine alone

The dog barks distant from my place  
were chorus for the band,  
Staccato voices sound with grace  
And firmly make a stand.

I watched the lace trimmed curtains  
blow before the opened pane,  
I wished that life could just stay so  
And innocence remain.



## SLISA offers diversity

By Kimberly Weissman  
News Editor

The Saint Leo International Students Association (S.L.I.S.A.) is preparing for another great year. The club's main focus is bringing students together from places all over the world, but don't let the name fool you. There are many American students who participate in the club, while other members involved in the organization are from the Bahamas, U.S. Virgin Islands, Cayman Islands, Jamaica, etc.

September 19, S.L.I.S.A. celebrated its first dance in the Cage. A wide range of

music was played such as reggae, rock, calypso, rap, socca, salsa, and alternative. S.L.I.S.A. looks forward to many such socials and fun activities to participate in throughout the year.



The S.L.I.S.A. officers are: Amini Awe, president, Alfonso Fuminaya, vice-president, Donovan McCoy, treasurer, and Maylin Erskine, secretary. All are welcomed and encouraged to join! If you have any questions concerning S.L.I.S.A., contact Amini at x8808.

## Meal plan under fire

By Donna Rail  
Monarch Staff Writer

Saint Leo's meal plan has gone from optional to mandatory, and not everybody is happy. Why has the cost gone up? Why have a few students been allowed off for membership in special diet programs?

Mr. Leonard Conley, from the Food Services Office, informed me that the self-option was removed because on-campus enrollment has dropped from one thousand into the eight hundreds. The meal plan's total cost was also raised to compensate for the money those people would have paid, and to run the McDonald Student Building. Conley said he knew "people didn't like to be told to do things, but in this economy, it's necessary."

## Board of Trustees seeks student representative for 1992-93

### Special to the Monarch

Qualifications and Process for nomination by the Board of Trustees for a Student Representative to the Board:

1. Any student enrolled full time (12 or more hours) is eligible for nomination to the Board of Trustees as a representative of the student body with at least a 2.5 GPA and at least 30 hours accomplished.

2. A student may nominate him/herself with the support of at least 25 additional student signatures or be nominated by another student who secures at least 25 supporting signatures. These signatures will not be secured from organizations to which the student belongs.

3. A committee consisting of the Vice-President for Student Affairs, two Student Affairs staff members, one member of the Academic faculty and three appointees of the Student Government Association on campus will recommend to the President from the nominees three individuals for his consideration; committee members appointed by the SGA to

this committee may include non-traditional students.

4. The President shall recommend to the Membership Committee of the Board the nominee judged to be most beneficial to the deliberations of the trustees.

5. Upon presentation by the Membership Committee, the student representative is elected to the Board of Trustees by its vote, in accordance with the Board's bylaws.

The student representative shall serve a one-year term or until he/she terminates or interrupts, by more than a semester, his/her studies at Saint Leo College, whichever occurs first.

Since the Board of Trustees meeting is November 13, 1992, we would like to present the nominees to Monsignor Mouch and then the Board at the November meeting. Therefore, please have all needed materials into the Student Affairs office located in St. Edward Hall by October 30, 1992.

Thank You.

## Ron's World

By Ron Broz  
Copy Editor

Surviving the first month of college is a rather peculiar process. Initially, the entering freshman will be worried about getting books, studying, and "making the grade." In reality, these things won't become truly pressing until later on in the semester.

The true test of surviving the first month of college is in coping with living at college. Survival means getting settled in a room, breaking in (or literally throwing out) a roommate, and learning to coexist with some diverse personalities.

Settling into a room seems like the easiest thing in the world to do--to the untrained eye. First, you meet your new roommate and lug all of your respective things into your new room. If you're lucky, you'll end up with a roommate who's not an axe murderer. If you're even luckier, you'll end up with a roommate who won't turn you into an axe murderer.

Eventually, after much arguing, threatening, and throwing of objects not bolted down, you and your new roommate will get your things and space squared away. The remainder of your time together can then be spent forming a strong mutual bond, as you both go pounding on the doors to your neighbor's rooms, trying to get them to turn down their Ice-T and Heavy-D so you can get some sleep.

Getting your roommate comfortably broken in is one of the most important things you'll ever do in college. It is best to start with the basics: What kind of person is this? Is he extremely neat?

Is he a slob? Does his idea of a burglar alarm consist of leaving a pizza lying in front of the door so that an intruder will slip and hurt himself? Once these and other questions have been answered, you can get on to working out your obvious differences.

If one of you always seems to want to party while the other one studies, talk about it - work it out. If one of you always

seems to have friends over while the other tries to sleep, talk about it work it out. Remember that throwing a bound and gagged roommate and all of his possessions out the window is a bit extreme and should be saved as a last resort. Things usually work out before it gets that far anyway.

You've moved in and straightened things out with your roommate, so now what's left? Frighteningly enough, what's left is a macrocosm of what you've already gone through. Dealing with all of the different kinds of people on campus sometimes takes a lot of patience because when you've got that many people in one place, you're bound to run into some really hideous personalities, like that Jock-looking fellow down the hall for whom the pinnacle of existence is grunting the phrase @#!%\$&! to instigate a pizza fight with others in the hall. Remember that most of these people are not from the same place or background as yourself and treat them accordingly. Try to be as nice and polite to everyone as you can and above all relax. Too much social stress can make people do some really crazy things, and Saint Leo does have a perfectly functional bell tower. Just take it one person at a time and follow your instincts.

Room, roommate and the quirky personalities of others at your new college--once you have overcome these rather formidable stumbling blocks of college survival, you can safely cease to think in terms of survival and start thinking about living. You will find that once you have secured a safe, comfortable existence for yourself, the rigors of studying, tests, and general scholastic activities (as well as those social and recreational) will all be that much easier to endure. Remember, calm is the key to it all. Keep your head while dealing with these things (and people), and you will get it all under control--also, be careful not to slip in the pizza.



**SRD Automotive**

**On Campus Repair Free Towing on Campus**

▲ Major and Minor Repairs

▲ General Maintenance

▲ Mufflers and Exhaust Systems

▲ Oil Change - \$16.95

**Brake Work Oil Changes Tune ups**

**\$3 Service Call on Campus**

**8 a.m. - 5 p.m.**

**Monday - Friday**

**(904) 588-3291**



# SPORTS

## Saint Leo volleyball team starts 92-93 season

By Glenn Ladwig  
Design Editor

The Saint Leo Women's Volleyball team has begun the '92-93 year. This is only the second year of the team's existence. The head coach of Monarch volleyball is Cindy Pond, assisted by Becky Schaly. Saint Leo is an NCAA Division II school. The team lost three lettermen and has four returning, as well as losing three starters with three returning.

In light of last year's 4-19 record, they look forward to improvement this year. "One obstacle they'll have to overcome is height," said Fran Reidy, Sports Information Director. "Because we don't have a tall team, they'll have to concentrate on quick sets and overall speed to compensate."

Because the Monarchs haven't had any home games in almost a month, they would benefit from student support at all home games.



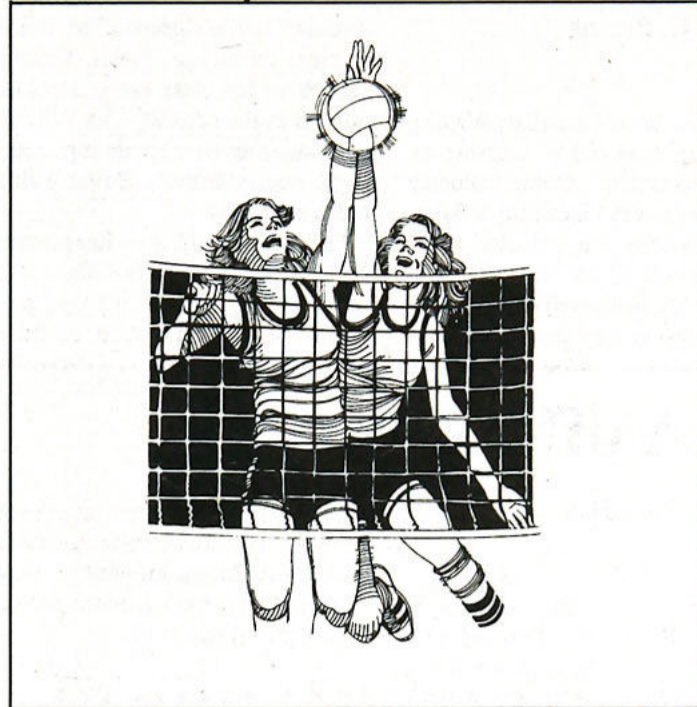
### Soccer SCHEDULE

Date	Opponent	Location	Time
Sat. Oct. 10	University of North Florida	Away	2:00
Tue. Oct. 13	Saint Thomas University	Away	4:00
Sat. Oct. 17	University of Auburn	Home	1:00
Sun. Oct. 18	University of Alabama	Home	3:00
Wed. Oct. 21	Eckerd College	Home	4:00
Sat. Oct. 31	Florida Southern	Away	7:30
Wed. Nov. 4	Florida Atlantic University	Home	3:30
Fri. Nov. 6	University of Tampa	Home	3:30



### Cross Country SCHEDULE

Date	Host	Location	Time
Sat. Oct. 10	University of Tampa	Away	8:00 a.m.
Fri. Oct. 16	University of South Florida	Away	5:30 p.m.
Sat. Oct. 24	Conference	TBA	TBA



### Volleyball SCHEDULE

Date	Opponent	Location	Time
Fri. Oct. 9	Palm Beach Atlantic Tourn.	Away	TBA
Sat. Oct. 10	Palm Beach Atlantic Tourn.	Away	TBA
Wed. Oct. 14	* Eckerd College	Away	7:30
Thu. Oct. 15	Saint Francis College	Home	7:00
Tue. Oct. 20	Clearwater Christian College	Home	7:30
Wed. Oct. 21	* Florida Southern College	Home	7:30
Fri. Oct. 23	Bethune Cookman College	Home	7:00
Tue. Oct. 27	Clearwater Christian College	Home	7:30
Wed. Oct. 28	Webber College	Away	7:00
Mon. Nov. 2	* Eckerd College	Home	7:30
Wed. Nov. 4	* Rollins College	Home	7:30
Fri. Nov. 6	* University of North Florida	Home	7:30
Sat. Nov. 14	* Barry University	Away	4:00
Mon. Nov. 16	* University of Tampa	Away	7:30
Wed. Nov. 18	* Florida Tech	Home	7:30

\*Sunshine State Conference Matches

### MONARCH CLASSIFIED ADVERTISING

Allow 1 (one) space for each letter, space & punctuation mark. Please fill out order form and mail to: MONARCH, P.O. Drawer 1, Saint Leo, FL 33574. Money orders or checks only. Make checks payable to: MONARCH. Payment must accompany order. Amount Enclosed \$ \_\_\_\_\_

#### AD COPY FORM:

\_\_\_\_\_

\_\_\_\_\_

\_\_\_\_\_

\_\_\_\_\_

\_\_\_\_\_

\_\_\_\_\_

\_\_\_\_\_

\_\_\_\_\_

Attach additional sheet of paper if necessary

CLASSIFICATIONS: (Circle One)		
1. Announcements	5. Boats & Motors	18. Notices
a. Greek	6. Connections	19. Personals
b. Residence Hall	7. Exchange/Swap	20. Pets and Animals
c. Specialty Club	8. Events	21. Radios, Stereos, TV's
2. Apts, houses, mobiles - for rent	9. For Rent - Misc.	22. Real Estate
a. Furnished	10. For Sale - Misc.	23. Rides and Carpools
b. Unfurnished	11. Furniture & Appliances	24. Roommates
3. Apts, houses, mobiles - for sale	12. Giveaways	25. Svc. Offered & Wanted
a. Furnished	13. Help Offered & Wanted	26. Sports & Rec. Equip.
b. Unfurnished	14. Lost and Found	27. Travel Opportunities
4. Autos & Auto Equip.	15. Miscellaneous	28. Typing & Word Processing Svcs.
	16. Motorcycles & Scooters	29. Wanted - Misc.
	17. Musical Instruments	

Classified advertising rates: 15 words or less: First day - \$3. Each add. day - \$2. Each add. word - \$.10 per word per day.

\*Publication dates: (Circle Dates)  
September 24 ★ October 2, 16, 31 ★ November 13 ★ December 4  
★ January 29 ★ February 12, 26 ★ March 12 ★ April 9, 23

This information will not appear in the advertisement

Name \_\_\_\_\_

Address \_\_\_\_\_

City \_\_\_\_\_ State \_\_\_\_\_ Zip \_\_\_\_\_

Phone \_\_\_\_\_

### DATE RAPE

continued from page 1

After all, little girls rehearse romance; they don't rehearse rape.

Many women feel that they have said "no" when what they have actually said was, "I want to go home now..." "We shouldn't be doing this..." "I don't know you well enough..." "Please. You're hurting me."

None of these sounds like "no" to a man who doesn't want to hear it.

Practicing specific words to say is wonderfully useful. It makes you picture yourself responding clearly and forcefully. It gives you permission to say "no."

Simply and most practically, it puts the words in your mind, tucked away and ready, should occasion call. No need to stumble and stutter- the words are there, waiting to come out of your mouth when you need them.

Do you know what the laws and practices in your community recognize as being sufficient evidence that a woman was raped?

Find out. You may find that witnesses are required. You may find that evidence of a struggle, such as blood under her fingernails, is required. You will certainly find that she needs to have made it absolutely clear to the man that "no" was what she meant.

Plan to lobby to change the laws if you don't like what you find, then get some

cards printed. Your local YWCA or women's center probably will sponsor them gladly. Spread them all over town, so they start conversations, friend to friend, parent to child, about what to do when real-life rape is facing you.

Use those cards to practice the words, to learn not only that you have the right to say "no" but exactly how to say it.

**Saying "This is rape! Stop raping me!" clearly and forcefully will stop some men whose own understanding of the situation may be confused. It may stop others who hear the threat of a trial in the words.**

Others it will not stop, but you will never wonder if you somehow misled him-you will know you did not-and when you go to court, the law is more likely to be on your side.

Reprinted with permission of Scripps-Howard News Service.

### GREEKS & CLUBS RAISE A COOL \$1,000.00

IN JUST ONE WEEK!  
PLUS \$1000 FOR THE MEMBER WHO CALLS!  
And a FREE HEADPHONE RADIO just for calling 1-800-932-0528, Ext. 65.

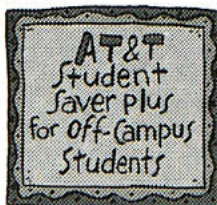




"Do I take 'The Microbiology of Potentially Pathogenic Beta-Hemolytic Streptococci.' Or 'The Evolution of the Situation Comedy.' Do I really want to live with Judy the neat freak again. I can't believe I've got until Monday to decide if I'm a Biology or a Theatre major. Have I completely lost it? Will I ever be able to make a decision, again? Wait a minute, just yesterday, I was able to pick a phone company with absolutely no problem... Yes, there is hope."

**W**ith AT&T, choosing a phone company is easy. Because when you sign up for AT&T Student Saver Plus, you can pick from a complete line of products and services designed specifically to fit your needs while you're in college. Whatever they may be.

Our Reach Out\* Plans can save you money on AT&T Long Distance, no matter where and when you call. Call Manager will separate your AT&T Long Distance calls from the



ones your roommates make. And the AT&T Calling Card makes it easy to call from almost anywhere to anywhere. Also, when you sign up for AT&T, your first call is free\*.

And with AT&T, you'll get the most reliable long distance service.

AT&T Student Saver Plus. It's the one college decision that's easy to make.

**If you're an off-campus student, sign up for AT&T Student Saver Plus by calling 1 800 654-0471 Ext. 851.**



© 1992 AT&T. \*You'll receive one \$3 AT&T L.D. Certificate equivalent to 22 minutes of direct-dialed, coast-to-coast, night and weekend calling based on rates effective 6/8/92. You could get more or fewer minutes depending on where or when you call. Offer limited to one certificate per student.





**For Fast  
Hot Delivery  
CALL**

**TRAVERSE CITY**

1121 East Front Street  
Traverse City, MI 49684  
Phone  
**(616) 941-1767**

**DADE CITY**

426 N. 7th Street  
Dade City, FL 33525  
Phone  
**(904) 567-9424**

**CLERMONT**

1041 W. Hwy. 50  
Clermont, FL 32711  
Phone  
**(904) 394-8595**

**HOURS**

MON. - SAT: 10:00 a.m. - 1:00 a.m.  
SUNDAY: 12:00 Noon - 1:00 a.m.

**GJ's PIZZA**

Buy One Pizza - Get One Free!  
You also receive a quart of Pepsi  
with each Pizza Order

	Sm.	Med.	Lg.
Cheese	5.15	7.10	9.55
Cheese & One Item	6.10	8.15	10.65
Cheese & Two Items	6.90	9.10	11.75
Cheese & Three Items	7.70	9.95	12.85
Cheese & Four Items	8.50	11.00	13.95
GJ's Deluxe Special	9.35	11.55	14.45
Special Orders - 5 or More Items	.80 ea.	.90 ea.	1.00 ea.
Extra Sauce			Free
Vegetarian Special	9.95	12.05	14.95
Chef's Salad			2.95
Large Pizza Slice			1.25

**BEVERAGES**

Items Available On GJ's Pizza	M	QT
Pepperoni	.50	.95
Mushrooms		
Bacon		
Green Peppers		
Green Olives		
Anchovies		
Ham		
Onions		
Ground Beef		
Black Olives		
Italian Sausage		
Pepsi Cola		
Diet Pepsi		
Mountain Dew		
Root Beer		

**GJ's Subs 30 Delicious Varieties**

"HOT FROM THE GRILL"

	8''	12''
GJ's Original Sub Italian Meats & Cheese	3.20	4.75
Jumbo Original GJ's Original with Extra Meat & Cheese	3.80	5.65
Salami Sub & Cheese	3.25	4.90
Pizza Sub Pizza Sauce, Cheese, Pepperoni, & Mushrooms	3.25	4.90
Italian Sausage And Melted Cheese	3.25	4.90
Roast Beef And Melted Cheese	3.25	4.90
GJ's Deluxe Supreme Ham, Salami, Pepperoni, Cheese, Mushrooms, & Green Peppers	4.25	5.95
GJ's Vegetarian Special Any Combination of Mushrooms, Sweet Peppers, Black Olives, Cheese	2.90	4.30

**Steak Subs**

Featuring USDA Choice  
New York Strip Steak

	8''	12''
Steak & Cheese Sliced Wafer Thin with Melted Cheese	3.40	5.10
Jumbo Steak & Cheese Extra Meat & Cheese	3.95	5.95
Mushroom Steak Tender Juicy Steak & Mushrooms	3.40	5.10
Mushroom Steak & Cheese Add Melted Cheese	3.65	5.45
Pepper Steak & Cheese Diced Sweet Peppers & Steak	3.65	5.45
Pizza Steak & Cheese Steak, Pizza Sauce, Melted Cheese	3.60	5.35

	8''	12''
Pizza Steak & Mushrooms Steak, Pizza Sauce, Cheese, Mushrooms	3.70	5.55
Jumbo Pizza Steak Extra Meat & Cheese	4.05	6.10
GJ's Steak Special Mushrooms, Sweet Peppers, Pizza Sauce, & Cheese	3.80	5.65

**BURGER SUBS**

World's Longest Cheeseburger Ground Round with Melted Cheese	2.95	4.55
Jumbo Cheeseburger Extra Meat & Cheese	3.65	5.45
Pepperburger & Cheese Diced Sweet Pepper & Ground Round	3.25	4.90
Pizzaburger & Cheese Ground Round & Pizza Sauce	3.15	4.70
Pizzaburger & Mushrooms Add Delicious Mushrooms	3.35	5.05
Jumbo Pizzaburger Extra Meat & Cheese	3.70	5.45
Mushroomburger & Cheese Add Mushrooms & Melted Cheese	3.25	4.90
GJ's Burger Special Mushrooms, Green Peppers, Pizza Sauce, & Cheese	3.80	5.65
Bacon Burger & Cheese	3.15	4.65

**HAM SUBS**

Ham & Cheese Sweet Ham & Cheese	3.25	4.90
Jumbo Ham & Cheese Extra Ham & Cheese	3.80	5.65
Fried Ham & Cheese Melted Cheese & Fried Ham	3.25	4.90
Jumbo Fried Ham & Cheese Extra Ham & Cheese	3.80	5.65
Additional Items	.45	.65

All Submarines include • Crispy Fresh Lettuce • Red Ripe Tomatoes • Chopped Onions • and GJ's Own Sauce