



MONARCH

Volume LXXVII Issue 6

Student Publication of Saint Leo College

November 22, 1991

Inside This Edition . . .

Letter to the Editor, p. 2

Art show dawns talent, p. 3

Trivia - Lives and Times, p. 4

Phillips' high expectations, p. 7

Students arrested, drug possession

By Judith Rochelle
Director of Public Affairs

I offer this communique because we have had an incident on campus that many of you may have had news of and the administration feels it is always more beneficial to disperse correct information than to let the rumors grow in a vacuum.

Two male students, Michael Grimaldi and Christopher Evans, have been arrested and charged as follows:

Michael Grimaldi: possession of

marijuana with intent to sell and possession of a controlled substance.

Christopher Evans: possession of marijuana with intent to sell.

Both students have been suspended from Saint Leo College. An investigation into the situation is continuing. Authorities are currently investigating the definition of a "School Zone." If it is determined that Saint Leo College falls within that definition the appropriate additional charges will be lodged against Grimaldi and

Evans. This could possibly mean a mandatory minimum three-year jail term if either of the young men is found guilty.

Two things are extremely important for us to address:

1. It is the intention of Saint Leo College to be a drug-free campus and the administration is dedicated to that mission. Any necessary actions will be taken to ensure that this type of environment is achieved and maintained.
2. As a campus community we must focus on all the other points which stress the integrity of the

institution and not let the thoughtless actions of a very few damage that integrity. Saint Leo has many points to commend it, and that is where we must direct our energies.

The fact that a small rash of incidents has occurred in a very short span of time is not the important issue. The fact that these incidents are being dealt with appropriately and addressed to prevent them in the future is what is really important, and I urge everyone to keep that in mind.

Strategic planning forms the future of SLC

By Joel Murray
Monarch Staff Writer

"Strategic Planning" is a phrase that you may or not have heard, depending on who you've been rubbing elbows with lately. By asking five different people about its meaning you may get five different definitions, so here is number six (as defined by Dr. Maribeth Durst, dean of campus academic programs).

Saint Leo College's brand of strategic planning involves five areas: continuing to improve academic quality, recruiting and retaining students; enhancing student life; managing the finances of SLC with the future in mind; and increasing communication between SLC's different offices. These five areas are interrelated and are designed for SLC's good tomorrow.

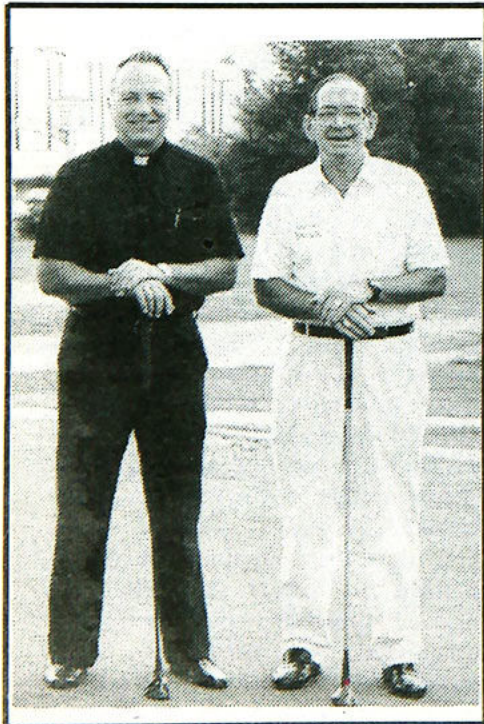
The Strategic Planning Council

consisting of students and faculty is led by a professional consultant who has worked with other colleges and universities. With a 5% increase across the board in the budget, an increase in tuition had to follow.

This increase and the higher academic standards have decreased the number of returning students, so it is important that the finances are managed wisely for the future.

The SAT average of incoming new students has risen almost 50%. As an example of the communication required, Dr. Durst discussed the offices of Admissions, Finance and Academic Affairs.

All three individually have certain goals, but with increased correspondence they are able to work as a whole in prioritizing goals for the betterment of SLC.



Msgr. Mouch and Norm Kaye enjoy a cool day at the golf course.

Faculty and staff recognized at *Night of 1,000 Stars*

By Kimberly Weissman
News Editor

On Saturday night, November 2, 1991, Saint Leo College held its annual Employee Service Awards presentation. The "Saint Leo College Academy Awards Night" recognized the dedication and hard work displayed by the faculty and staff, who have given long term service to the College. The cost of the event was partially underwritten by many sponsors.

Awards were presented to the staff of Follett College Book Store and Marriott Campus Operation, as well as the SLC faculty and staff. In total, 171 individuals with more than five years of service to SLC were honored.

The theme of the evening was an "imaginary" Academy Awards. Oscars, called "Leos," were presented to those employees with 25 years of service to the institution. Those seven outstanding people were transported in an antique car and limousine to the McDonald Center. They had a private champagne reception with Monsignor Frank M. Mouch, college president. Upon their arrival

at the McDonald Center, the SLC Spirit Club, a new organization on campus this year, applauded, cheered, and begged for autographs to simulate the crowd at the Academy Awards.

Bill Foley, professor of accounting, served as emcee for the

gala event. The program for "The Night of Stars" included a champagne reception at 6:30 p.m., dinner at 7:00 p.m., program at 8:00 p.m., and dancing until midnight to the sounds of "Asule." The Saturday night event turned out to be a great success.



Editorial.....	2
OnCampus.....	3
Leisure.....	4-6
Sports.....	7

Direct representation offered

By Thomas Turcotte
Associate Editor

Direct representation is one of the most vital practices in any democratic government. There should always be the shortest link possible between the governed and the government. The shorter the link, the more likely it is that the constituents concerns will be dealt with. In some cases, direct representation is not practical, but those governed must always have as much representation as possible.

Recently, Saint Leo College offered the student body a position on the Board of Trustees. The student who received this position has full voting and speaking rights on the board. This is a gigantic leap forward for the representation of SLC students.

The Board of Trustees approves and guides the policies of SLC. These are policies that directly affect the students, and thus it is clear that the board should be aware of the student body's concerns. In the past, there have

been several committees to discover the concerns of the students, and then report the concerns to the board, but there has never been the opportunity for the student body to voice its concerns directly to the board.

In addition, the voting power will allow the students to have a concrete part in the decisions that so heavily affect them. The voice plays an important part in urging the board to make the proper decisions, but the vote further advances the value of democracy.

Our founding fathers recognized the importance of suffrage. Every citizen of a nation and every group on a campus must have the right to vote. The student representative will not only have a say about what the decision should be, but the student will also take a part in making that decision.

It is a truly radical step that the College is undertaking. The College should be commended for allowing a student to participate on the highest governing body of the institution.

Letter to the Editor

This letter is printed exactly as it was submitted. The Editorial Board made no attempt to correct any erroneous information in the body of the letter. The opinion of the author does not necessarily reflect the opinion of the Editorial Board.

As students at Saint Leo for roughly two year, my roommate and I have become familiar with school policies and regulations. After experiencing several problem with the rules, under which all students live at Saint Leo, we decided to go to Student Affairs and pick up a handbook to

thoroughly examine just what rights as students we do have. Not to be surprised, we found we have very few, and with a careful review of the laws of Leo land we were astounded at what we dug up. The regulations set upon each student were humiliating, a true insult to our maturity and respect we rightfully deserve as young adults attending an institute of higher learning.

Our first problem was the policy regarding room search. Outlined in the handbook, that is expected to be understood by each student (the handbook is 70 pages long and consists

of over 60 topics discussed, not including the paragraphs used to explain these 60 or more policies) who attends Saint Leo, as if the work load of the student was not enough to handle, room search was found to be unfair, and an invasion of privacy. The student handbook defines room search as, "Saint Leo College maintains the right to conduct a 'room search' when there is an apparent reason for doing so." We do not all share the same opinion of what is and

isn't an apparent reason. You probably guessed correctly, yes, the school decides what is considered an apparent reason. It's hard to say what evidence determines the school's decision to carry out a room search. It seems that, according to our interpretation of the rule, anyone at anytime is open to a room search with as little evidence as a simple

Please see Letter, p. 7

President's Corner

By Msgr. Frank M. Mouch
President, Saint Leo College

One of my professional contributions to the wider educational community is membership on the Commission on Credits and Credentials of American Council on Education. The Commission, among other services, evaluates courses and programs of training conducted outside the usual college setting for their value toward a degree in higher education. Our CCE and MEP programs utilize the Commission's decisions quite often for their adult students.

At a recent meeting of the group in Washington, a representative of the U.S. Navy made what was to me a startling statement. The Navy uses force to conduct much education via computer self-instruction (e.g., for personnel who spend weeks and months below the surface in submarines) and satellite transmission (e.g., to aircraft carriers with their large component of sailors). But this education officer went much further: she stated that the Navy was getting rid of mini-campuses (such as Saint Leo College conducts). In the future all instruction would be done via technological means.

My difficulty with her announcement, besides the fact that she admitted that she does not know how this total technological instruction is to be accomplished, is that I believe so much in the give-and-take of interpersonal relations that is at the heart of education. Factual data can always be secured via impersonal means: we've made libraries for

the data, but what the student does with the information, how much weight is given to the data, how it is utilized to support other learning - questions like these depend so often for their answer on the interrelationship of student and professor.

Recently we tried to underline that at SLC by honoring, at a quiet dinner, the top students in each division and their advisors. In case you missed who they are: Todd A. Trumpore, Social Science, Mr. Terry Danner, advisor; Pasquale DeFiore, Science and Math, Dr. George Dooris, advisor; David Gilpin, Humanities, Mr. David Frankel, advisor; Mrs. Georgia Butler, Education, Dr. Calista Koval, advisor; Catherine McEvoy, Physical Education, Mr. John Swart, advisor; Gregory Meahl, Business Administration, Mrs. Lynn Roberts, advisor.

While I have no doubt that the students are capable in their own right, I know that they have accomplished so much in their studies here because of the faculty and their advisors. Many parents on campus for the recent Family Weekend confirmed this to me by their comments about the faculty with whom their sons or daughters are studying.

All of SLC is grateful for the leadership efforts of our top students and the supporting assistance given to them by the faculty. They are making a real contribution well beyond the successful completion of students' degree programs. They are contributing encouragement to all the students and a tangible value to the reputation of the College.

MONARCH

1989-1990 ASPA First Place with Special Merit
1989-1990 CPA Second Place with Special Honors
1988-1989 ASPA First Place Winner

Michelle G. Berens Editor

Thomas Turcotte Associate Editor

Renee Lacerenza
Copy Editor

Daniel E. Eckert
Design Editor

Pia Navarro
Office Manager

Luis Hernandez
Artist

Kimberly Weissman
News Editor

Judith Rochelle
Advisor

Staff: Susan Cummins, Scott Graham, Peg Hamann, Kelly Jenkins, Glenn Ladwig, Lisa M'Colgan, Joel Murray and Todd Trumpore.

All Letters to the Editor must be typed, double-spaced, one side on a page and contain a maximum of 250 words. All letters must be signed and include an address and telephone number for verification purposes. Unsigned letters will not be published but names may be withheld upon request. Due to limited space, all letters may not be printed. The *Monarch* reserves the right to edit letters. The opinions expressed in letters are those of the author.

Please submit letters to the *Monarch* Office (room 7 in Saint Leo Hall) or to the Office of Public Affairs (room 7 in Saint Francis Hall) the Monday (ten days) prior to publication.

Full responsibility for the material that appears in this publication rests with the Editorial Board. Opinions expressed in columns or letters are not necessarily the views of the editors or of Saint Leo College. Editorials appearing in the *Monarch* are published with the express consent of a majority of the Editorial Board.

The *Monarch* is printed biweekly throughout the academic year, except around and during College holidays.

All correspondence with the *Monarch* should be addressed to: **The Monarch, P.O. Drawer I, Saint Leo, Florida 33574.**

Art show presents exciting new talent

By Daniel E. Eckert
Design Editor

Saint Leo College presented the works of some exciting new artists when it held its first student art show of the 1991-1992 academic year on October 23. The opening was considered a great success by the art department and gave the community a chance to see the kind of talent Saint Leo students have.

The following is a rundown of the prizes awarded at the show:

Best of Show - *Landscape with Trees*, etching by John Van Zyck

Drawings and Graphics:

First Place - *Sleeping Figure*, charcoal drawing by Sherri Neff

Second Place - *Self Portrait*, monoprint by Denise Van Wilt

Third Place - *Study in Grays and White*, drawing with white chalk highlights by Susan Smalley

Honorable Mention - *Crossed Figures*, colored etching by Mindy Parworth

Honorable Mention - *Seated Figure*, chalk drawing by Kim Palukaitis

Paintings, Design and Collage

First Place - (tie) *Still Life*, painting by Susan Rueda and *Mid-Life Crises*, collage by Susan Rueda

Second Place - *Puttin' on the Ritz*, collage by Susan Rueda

Third Place - (tie) *Leaves and Stems*, water painting by Susan Smalley and *Sleeping Figure*, monoprint by Denise Van Wilt

Honorable Mention - *Hidden in the Water*, water painting by Susan Smalley

The judge of the show was very pleased and here are some of her comments, "I love the sense of discovery, of adventure, of wonder in the works. They are all solid, competent at the very least and heart-stopping at best. There is a lot of excitement generated

by the sheer fun and wonder and even joy generated by each one. These works have been created by people who are focussed on their own expanding visual vocabulary

and not at all concerned with academic 'projects' per se. This is a fine and diverse show done by students demonstrating great range."

Kappa Sigma denied

Adam Albright
Special To The Monarch

By presidential vote the Kappa Sigma Interest Group was denied access to form a fraternity on campus. The interest group which was started by Frank Hudson during the Spring semester of 1991, was given a fair chance by the presidents of all the fraternities. After hearing both sides of the debate, the presidents made their decision.

The presidents gave several reasons for the denial: They believed that the campus was far too small for another fraternity. Other fraternities, now colonized,

need to have a fair chance to meet their own quota of brothers, and the first fraternity founded at SLC, Sigma Beta, currently seeking a national fraternity to represent them, also deserves a fair chance. The Inter Fraternity Council's constitution only allows seven fraternities on campus.

The presidents want to give Sigma Beta a fair chance to return to active status and not lose their position to a new fraternity. Kappa Sigma will be able to ask for another chance next semester, but graffiti written by members of the interest group was noticed and has hurt their chances for a reversal in the vote.

Crocker passes away

Kathleen Bell
Dir. Of Human Resources
Special To The Monarch

I regret to inform the Saint Leo College community of the death of Harley Crocker, Jr., husband of Norma Crocker, program assistant, MEP Fort Lee.

Mr. Crocker passed away this morning after a long illness at the age of sixty.

Please keep Norma in your thoughts and prayers. Cards of condolence may be sent to her at 251 Phillips Drive, Hopewell, Virginia 23860.



Several internships are offered to RHM students

By Michelle G. Berens
Editor

The Restaurant and Hotel Management Program internships are requirements for students involved in the program. The three-credit-hour class in which to enroll is RHM 425-Internship.

Several sites offer internships

to Saint Leo College students, three of which have housing facilities for students to occupy during the 14-week or 400-hour work experience.

These companies can offer internships in restaurant and/or hotel work: The Breakers of Palm Beach, restaurant and hotel, housing; Disney World in Orlan-

do, restaurant and hotel; Marriott-Airport of Tampa, restaurant; Marriott's Marco Island Resort, restaurant and hotel, housing; Marriott-Westshore in Tampa, restaurant; Sheraton Sand

Key in Clearwater, hotel, housing; and South Seas Plantation, Captiva Island, hotel, housing.

Although most students do their internships during the summers, the Fall or Spring semesters are also possibilities.

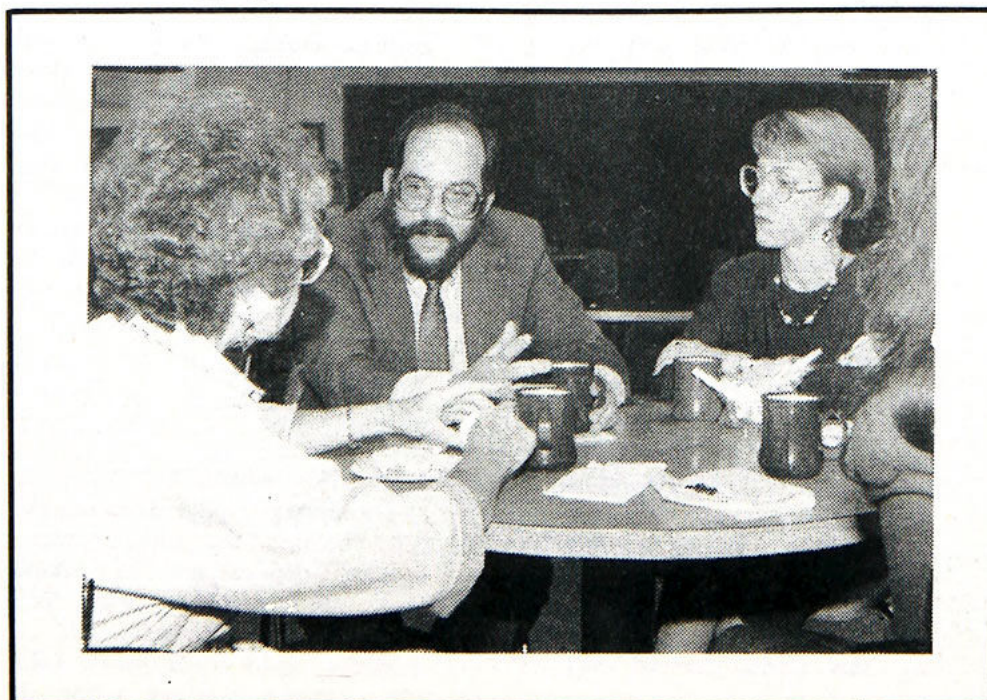
Wage-earning as well as non-wage-earning internships are available in the following areas: Food and Beverage, Hotel and Lodging, and Institutional Management.

Sigma Tau Delta has big plans for the year ahead

By Renee Lacerenza
Copy Editor

Sigma Tau Delta International English Honors Society, an academic fraternity which consists specifically of English majors and minors, has some big plans for the year ahead.

Besides inducting qualified students, constructing fund raisers, and working with Delta Epsilon Sigma National Honors Society in the annual Brain Bowl, Sigma Tau Delta is also proud to be sponsoring Mr. Martin Donsky, editor of the Tampa Bay Business Journal, at a banquet to be held on November 25. It will be both an honor and a privilege for students and faculty to welcome him to Saint Leo College.



Carolann

(formerly of a Cut Above)

I've moved!
(but not back to New York)
To Hair Pros on Meridian Avenue.

Full Service Salon
with nail technician

Perms * Colors * Spirals

Hair Pros
301 E. Meridian Avenue
Dade City
567-1005

Located in the Centennial Building
in downtown Dade City.

Hours:

M, T, W, F
8:30 a.m. - 6 p.m.

Thursday
9 a.m. - 8 p.m.

Trivia



By Daniel Eckert
Design Editor

Lives and Times

1. What picture did 1,077,521 people view during its three and a half week 1963 sojourn at New York City's Metropolitan Museum?
2. What city gained fame as home of the Playboy Mansion?
3. What is nucleomitophobia the fear of?
4. What cigarette caressed feminists with the ad slogan: "You've come a long way, baby"?
5. What symbol was designed around the stylized semaphore letters N and D?
6. Who was hailed in Europe as The Face of 1967?
7. What U.S. President said he was a great fan of baseball, noting, "I watch a lot of games on radio - er, I mean television"?
8. Whose official portraits were added to the White House Collection in February, 1971?
9. What mass murderer recorded with Brian and Dennis Wilson of the Beach Boys?
10. What group was the subject of the House Un-American Activities Committee's first investigation into non-Communists?
11. Who was the first president of the National Organization of Women in 1966?
12. What question about The Beatles did everyone start asking in October, 1969?
13. What black entertainer shouted "Four more years!" and hugged Richard Nixon?
14. What writer was present at the 1965 execution of Richard Hickock and Perry Smith at the Kansas State Penitentiary?
15. Who claimed he was "the first man to piss his pants on the moon"?
16. What style jeans did Levi start selling on March 12, 1969?
17. What do fanatical fans of the old *Honeymooners* TV show call themselves?
18. What bridge was bought by the McCulloch oil company of California in April, 1968, for \$2.46 million?

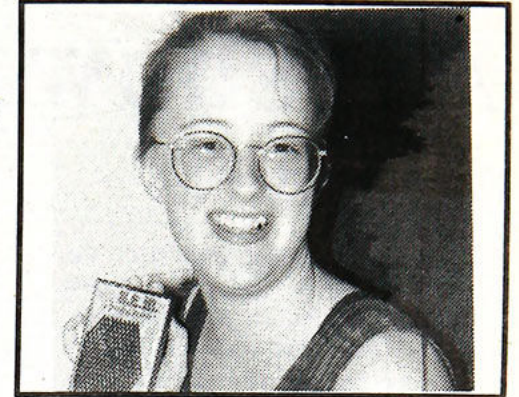
19. What medal was James Garner awarded twice during the Korean War?

20. Where were Archie and Edith Bunker's chairs enshrined?

1. The picture viewed was *The Mona Lisa*.
2. The city home to the Playboy Mansion is Chicago.
3. Nucleomitophobia is the fear of nuclear bombs.
4. "You've come a long way, baby" was the ad slogan for Virginia Slims.
5. The symbol designed around the semaphore N and D is the peace symbol.
6. Twiggy was hailed in Europe as The Face of 1967.
7. The U.S. President that was a great fan of baseball is Gerald Ford.
8. The portraits added to the collection were John F. and Jacqueline Kennedy's.
9. The mass murderer that recorded with Brian and Dennis Wilson was Charles Manson.
10. The group investigated was the Ku Klux Klan.
11. Betty Friedan was the first president of the N.O.W.
12. The question asked was "Is Paul dead?"
13. The black entertainer was Sammy Davis Jr.
14. Truman Capote was the writer present at the execution.
15. The first man to piss his pants on the moon was Buzz Aldrin.
16. Levi started selling bell-bottoms on March 12, 1969.
17. Fanatical fans of the *Honeymooners* call themselves Honeymoonies.
18. The bridge that the McCulloch oil company bought for \$2.46 million was the London Bridge.
19. James Garner was awarded the Purple Heart twice during the Korean War.
20. Archie and Edith Bunker's chairs are enshrined at the Smithsonian Institution.

ANSWERS

Ripping Spins



By Lisa McColgan
Monarch Staff Writer

If you had to decide which album would be considered your "best friend" album, which album would you choose?

Your "best friend" album is the album you couldn't imagine doing without. You listen to it when you're in a good mood. You listen to it when you're in a bad mood. It's always there for you. Get the idea? Okay - my "best friend" album is, without a doubt, REM's "Life's Rich Pageant." I've worn out close to five copies of that puppy. Anyway, I asked around campus, and here's what I got:

Olga Gonzales, senior: "I've got it narrowed down to three; Alter Ego's 'Black and White,' Alphaville's 'The Breathtaking Blue,' and 'Pretty Hate Machine' by Nine Inch Nails."

Chet Lyskawa, teacher: "These days? I'd have to say Bob Seger's 'The Fire Inside.'"

Kevin Kennedy, senior: "Randy Travis's 'Forever and Ever,' or whatever the title of that is..."

"Bat," freshman: "Ministry's 'In Case You Didn't Feel Like Show-

ing Up,' and 'Pretty Hate Machine.'"

Monica Flynn, freshman: "Depeche Mode 'Some Great Reward.'"

Rochelle Rosen, sophomore: "Aw, you're gonna laugh, but it's Billy Joel's 'Glass Houses.'"

Ginger Sheehy, sophomore: "Oh, I don't know. I guess it's probably be the Eagles' 'Greatest Hits.'"

John Ashfield, senior: "The Beach Boys 'Pet Sounds' and 'The White Album' by the Beatles. That's a neat question..."

Chris Northup, junior: "We'll, when I'm depressed the Cure's 'Disintegration.' When I'm in a good mood I listen to the Outfield's 'Play Deep.' When I'm angry AC/DC or Metallica, any album."

Dan Eckert, senior: "My best friend album is definitely a three way tie, Whitney Houston's 'I'm Your Baby Tonight,' 'Whitney Houston' and 'Whitney.'"

So, when you get home, how about listening to your "best friend" album. Chances are, you'll be glad you did. Peace...

Sincerely Yours

Dear Sincerely Yours,

I'm enjoying college life here at Saint Leo College, but there is one thing that I cannot stand anymore-smoking! What is it with all the students on campus? Don't they read newspapers and articles that explain the grim future they subject their lungs to each day? It's not the fact that they are ruining their own lungs and air but mine too. Is there anyway for me to avoid all this contact with smoke?

A Non-smoker

Dear Non-smoker,

I understand your dilemma exactly because the small percentage of non-smokers on campus face the problem you have described, too. Smokers are so defensive about their nasty habit, but I suggest you try asking the people around you to refrain

from smoking when you're present.

Dear Sincerely Yours,

Why is it that McDonald Cafeteria does not serve breakfast on school days? I'm always hungry in the morning but don't have time to walk to Marmion.

-Starving Student

Dear Starving Student,

I really don't know the answer to your question but if you're really hungry, you have to wake up earlier and make the trip to Marmion.

If you have a question, a problem or just want to say something, just bring your request to the *Monarch* office in the basement of Saint Leo Hall, room #7; or send it to: **The Monarch, P.O. Drawer I, Saint Leo, FL 33574.**

Horoscope

By Madame Moonbeam
Monarch Astrologer

Scorpio (Oct.24- Nov.21)
Don't put so much effort into your job now. Someone else will be recognized while your brilliance will be overlooked.

Sagittarius (Nov.22- Dec.21)
The favor you did for someone will come back to you. Sometimes a sacrifice makes the difference.

Capricorn (Dec.22- Jan.19)
Relax. Burning the candle at both ends never pays, so get some rest.

Aquarius (Jan. 20- Feb.18)
Persons who have behaved adversely to you before are willing to give you much respect.

Pisces (Feb.19- March 20)
Don't place too much trust in a new acquaintance, wait until the relationship gets stronger.

Aries (March 21- April 19)
Someone has confided something very personal in you recently. Keep this information to yourself or you may encounter trouble.

Taurus (April 20- May 20)
Romance figures prominently. Act on impulse.

Gemini (May 21- June 21)
A wise investment pays off. Money seems to come to you in a big sweep.

Cancer (June 22- July 22)
It's a good time to devise an exercise plan; your body will love you for it.










Leo (July 23- Aug.22)
Concentrate on pleasing family members now. Someone close to you needs your help.

Virgo (Aug.23- Sept.22)
Use your spare time to help others. The rewards you receive will be tremendous.

Libra (Sept.23- Oct.23)
Individuality is highlighted. Go out and express yourself.

This column is for entertainment purposes only.

November, 1991

Sunday	Monday	Tuesday	Wednesday	Thursday	Friday	Saturday
					1 Intramural Entry Deadline: Archery & Free Throws	2 7:30 p.m. Volleyball: Barry University
3 	4 5:30 p.m. Monarch Meeting Cultural Diversity Week	5 7:30 p.m. Volleyball: Eckerd College Cultural Diversity Week	6  Cultural Diversity Week	7 7:30 p.m. Volleyball: Univ. of Tampa Cultural Diversity Week	8 7:30 p.m. Chorale/Jazz Ensemble Selby Hall Cultural Diversity Week	9 7:30 p.m. Volleyball: Nova University
10	11  5:30 p.m. Monarch Meeting	12 7:30 p.m. Volleyball: Florida Tech	13 Fall Dance Concert	14 Fall Dance Concert	15  Fall Dance Concert	16 CUB Trip to Disney 10 am - 8 pm Fall Dance Concert
17 	18 5:30 p.m. Monarch Meeting	19 	20 CUB Movie Night: Naked Gun 2 1/2 9 pm - Cage	21 Food Service Theme Night: Thanksgiving Dinner	22 Men's Basketball: at Saint Thomas	23  Men's Basketball: South-Eastern College
24	25 5:30 p.m. Monarch Meeting 7:30 p.m. Women's Basketball: Webber	26 	27 Thanksgiving Break: No Classes Men's Basketball: Queen's College	28 Happy Thanksgiving Thanksgiving Break: No Classes	29 Thanksgiving Break: No Classes	30  Men's Basketball: at Stetson University

Bonita Flower Shop



JEWELL HATTAWAY
(904) 567-6795
1-800-771-5192



402 N. 7th St.
Post Office Box 156
Dade City, FL 34297-0156

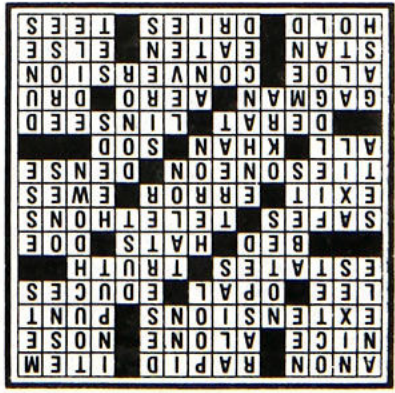
THE Daily Crossword by Victor Jambor, Jr.

ACROSS


- After awhile
- transit
- Account entry
- Pleasant
- Without peer
- Win by a —
- Extra tele-phones
- Fourth down play
- Protection
- Ring stone
- Reasons out
- Plantations
- Witness stand word
- Garden plot
- Tipping items
- John —
- Strongboxes
- Charity shows
- Departure
- Ball loss
- Cote denizens
- Gets drunk
- Obtuse
- Total
- Genghis —
- Sward
- Rid of rodents
- Kind of oil
- Comedian's supplier
- Of flying
- Joanne of movies
- Century plant
- Point after 11 D
- Ollie's pal
- Worn away
- In addition
- Office phone button
- Evaporates
- Pipe joints.

DOWN

- Anoint old style
- Puts the kibosh on
- Group of eight
- Originally named.
- Spoke with a burr
- Pseudonym
- Swimming spot
- Lodge
- Renegade
- Computer feed
- Gridiron score
- Slave
- NY nine
- Steno pad squiggles
- Storm or bowl
- Backs up
- Undealt card stock
- Bittern's cousin
- Wallet fillers
- Existence
- Bristle
- Leaf-stem angle
- 3-pointer
- Pay the bill
- Pays attention
- Intensified
- Gumbo
- Contributor



- 45 Sea nymphs
- 47 Correct
- 48 Sandbag dam
- 49 Roman magistrate
- 50 Irregularly notched
- 51 Sand hills
- 52 Deep cut
- 53 Palo —, Cal.
- 54 Not with
- 58 Shell man collection



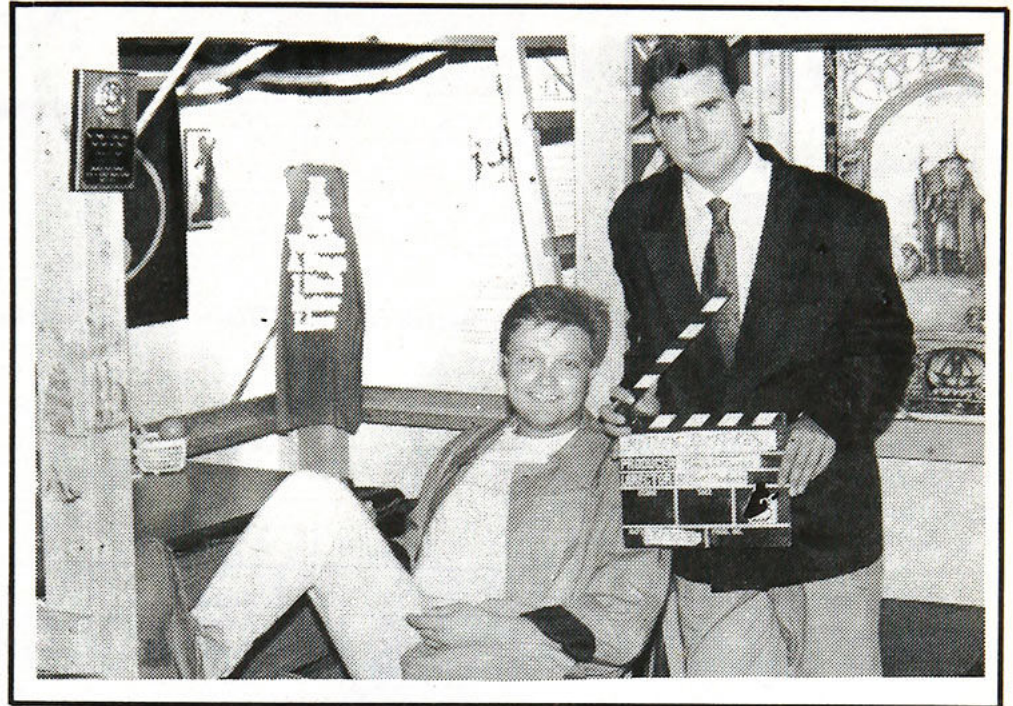
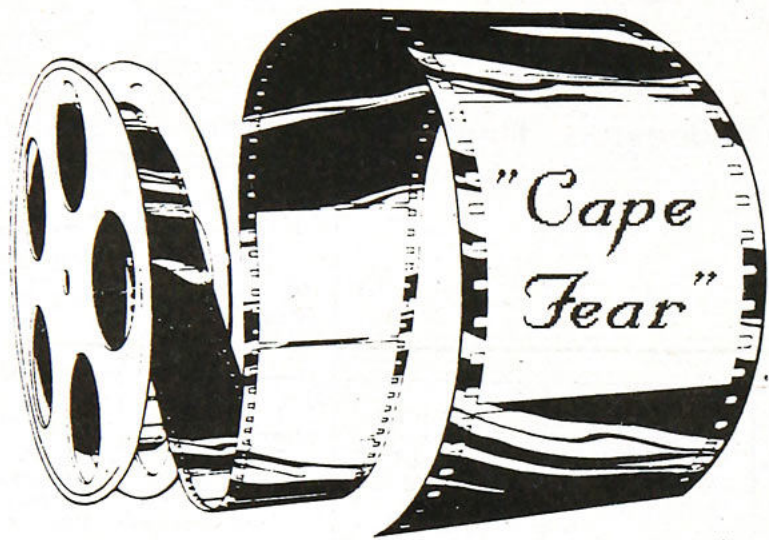
JOHNSON EYEWORKS

- Full Service Lab
- Optical Shop
- Next Day Service
- Large Selection of Sunglasses
- Designer Names
- Contact Lenses
- Examinations by Licensed Doctor of Optometry

Show St. Leo ID for 20% off purchase

208 S. 7th Street, Dade City
Next Door to Western Auto
521-3011
a division of Johnson Eye Institute, Zephyrhills

Cinemascope



By Todd A. Trumppore and
D. Scott Graham
Monarch Staff Writers

Ha, Ha! Scott's not here this week, so you'll get a 100% competent review of this movie!

This week's film is Martin Scorsese's Cape Fear, a remake of the 1962 classic thriller of the same title. This chilling movie is about a psychopathic rapist who, when released from prison, returns to exact revenge upon the family of the defense attorney who was responsible for his conviction fourteen years earlier. It is set in a sleepy South Florida community, which provides a surreal background for events of unspeakable terror and violence.

Robert De Niro's characterization of Max Cady (the rapist) will go down in history as one of the "all-time grates psycho roles". Jason, Freddy Kruger, and even Hannibal "The Cannibal" Lechter can't hold a candle to hem for pure malevolence. However, as most humans are prone to feel, there is something oddly attractive or compelling about the villain, and De Niro and Scorsese capitalize upon this to the fullest extent. Though Cady is one of the most

repulsive characters in the world, there is something insinuating in his character that draws the viewer to him. De Niro expresses the character's pain and inner turmoil in such a way that you can't help but feel a bit sorry for him. Cady is very slick and extremely intelligent, which serves to increase the character's magnetism.

Though the film is a remake, it is different enough from the first film to keep people who have seen it on the edge of their seats. Also, Scorsese brings more life and more reality to the characters of Bowden and his family. In the original film, Bowden and his clan are the epitome of middle-class America, with all of the virtue to match. This makes them somewhat bland from a certain point of view, and the distinction between good and evil are too bluntly defined. In the Scorsese version, the lines between good and evil are a bit more subtle, with the Bowden family having some flaws of their own. Nick Nolte's character, Sam Bowden has a history of marital infidelity, and is involved in a platonic, yet potentially adulterous relationship with one of his legal secretaries. Bowden's wife, played here by Jessica Lange, has had a nervous

breakdown in the past, as a result of her relationship with her husband, And finally, Bowden's 16 year old daughter is trying to "grow up too fast", so to speak. This helps to reinforce the image of Cady as a "fallen avenging angel", trying to make Bowden and his family "repent" for their sins. This is an image which Scorsese tries very hard to bring across.

This is one of Nolte's best and most interesting roles to date. It is interesting, for he sheds some of his "tough-guy" image, as well as 40 pounds; which is rather out of character for him. In short, he comes across very well in the role, and proves that he is a versatile actor who can perform very well outside of the action genre. Nolte manages to convey a deep sense of guilt for the crime he has committed in his past. Nolte is responsible for getting Cady, his own client, put in jail, because he buried a file which stated that Cady's victim was sexually promiscuous. This evidence could possibly have saved Cady from 14 miserable years in prison.

Cape Fear is well-paced and tightly directed. The film is driven along upon rails of tension and the viewer is always kept off

balance in various degrees. There weren't any superfluous elements to film - every scene had a purpose. It is very detailed film, yet the viewer never gets bogged down by them. Besides being a remake, it is also an homage to several other classic thrillers, such as Night of the Hunter. For fans of the original film, Gregory Peck and Robert Mitchum (the film's original stars) play cameo roles in this film. This flick is one of Scorsese's best efforts to date, and is quite likely to garner him the Oscar he has never gotten, but richly deserves. This film is true to Scorsese's philosophy that the world is a complex and gritty place. It is not nice and it is certainly no pretty, and the characters reflect this in their personalities and actions.

RATING: EXCELLENT

Cape Fear

Starring:
De Niro- Max Cady
Nick Nolte- Sam Bowden
Jessica Lange- Leigh Bowden

Directed by: Robert Martin Scorsese

Don's Towing and Auto Salvage

24 HOUR TOWING

Engines * Transmissions * Tires * Body Parts

Mechanic on Duty



4175 Pasco Road

San Antonio, FL 33576

(904) 588-3828



We accept Checks, VISA and Mastercard

OPEN 7 DAYS



SRD Automotive

On Campus Repair Free Towing on Campus

- ▲ Major and Minor Repairs
- ▲ General Maintenance
- ▲ Mufflers and Exhaust Systems
- ▲ Oil Change - \$16.95

Brake Work Oil Changes Tune ups

\$5 Service Call on Campus

8 a.m. - 5 p.m.

Monday - Friday

(904) 588-3291

SPORTS

Phillips has high expectations

By Steven Chesarak
Special To The Monarch

Tom Phillips was faced with a most unenviable task in his first season as head men's basketball coach last year. That of replacing his entire starting unit. With six seniors, two of whom were starters, returning this year, Phillips' expectations for the 1991-92 season are high. "Obviously, the fact that we have six seniors back is a plus," the second year coach said. "They should provide good leadership. And our two returning starters are two very good players."

Tyrone Graves, a 6-3 senior guard from Bardstown, Ky, started all 28 games last season, and left his mark on the Sunshine State Conference. He is the top returning scorer in the conference, having averaged 19.3 points per game. He also led the Monarchs in total points (541), steals (55), three-point shooting (25 converted), and free throw percentage (.855).

Jason Sartor, a 6-6 sophomore guard/forward from Brooksville is a talented player who is expected to come into his own after gaining valuable experience as a starter last season. He scored a career high 19 points against Tampa last year and was an All-SSC Freshman Team selection. Sartor is the all-time career scoring leader (1,437) at Hernando High School. "Tyrone is a big-time player that can jump out of the gym," Phillips said. "He is being counted on to be a big part of our team. When he goes well, we go well."

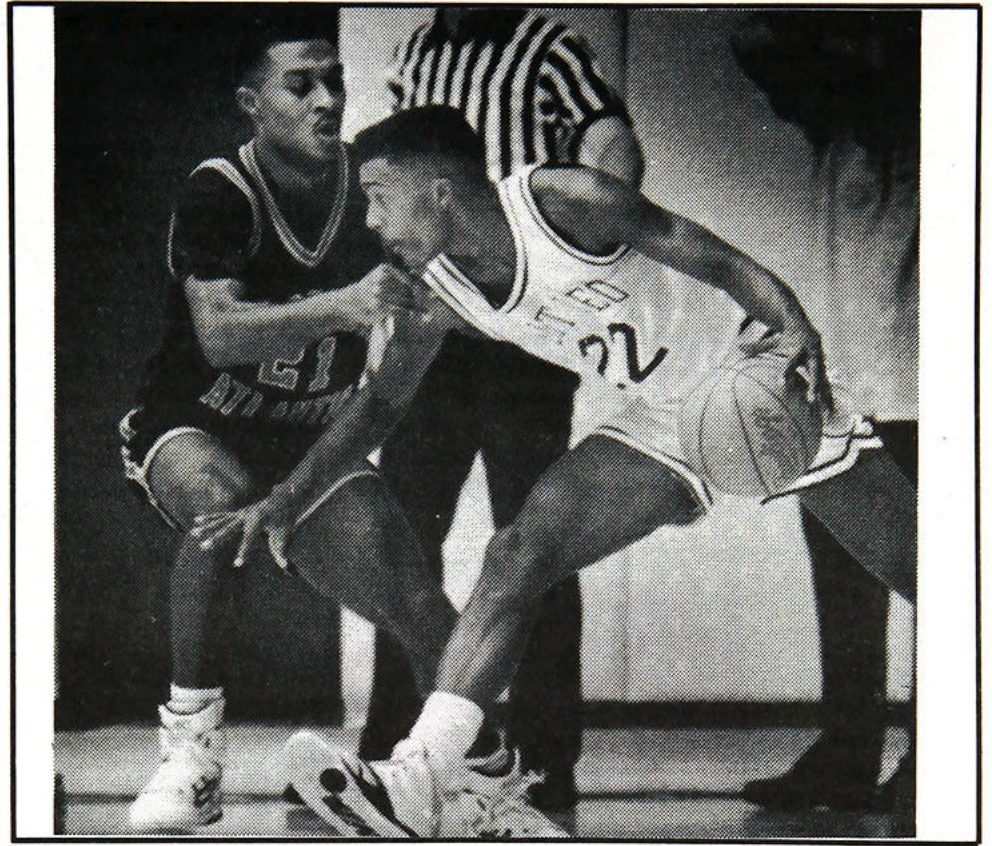
As for Sartor, "He will be a major contributor," he said. "I look for him to be even better than he was last year. He's a strong outside shooter and good ball handler." Phillips, who is being assisted by Mike Madigan, feels the upcoming season will be vastly different from last year's 8-20, 2-11 season. "This year is going to be a lot more positive," he predicted. "We've all been together for a year, and the schedule is not a killer like last year. We've got a little more flexibility."

The Monarchs got off to a rough start last season, losing seven straight before taking on national power Georgetown University. The eighth loss of the season, however, proved to be something of a charm. After losing to the Hoyas, the Monarchs reeled off six straight victories.

Phillips expects to see more of the confidence his players exhibited during that winning span last year.

The Monarchs will miss senior Tony Michalski who is being medical red-shirted this season because of a knee injury. He led the team in assists (80) last season, and averaged 5.5 points a game. Returning players expected to make major contributions include: 6-8, 210 senior Gary Zaitshik, 6-10, 250 senior Randy Copher, 6-2, 195 senior Robert Gandy, 6-0, 165 senior Bob Coakley, and 6-0, 170 Ernest Rozier.

Newcomers to watch include: Craig Calhoun, a 6-5 210 freshman forward from Cardinal



Tyrone Graves (22), a 6-3 senior guard, started all 28 games last season where he averaged over 19 points a game. He also led the Monarchs in total points(541), steals (55) and free throw percentage (.855).

Mooney High School where he averaged 22 points and eight rebounds; Joey Brauer, a 6-0, 160 sophomore guard transfer from Clarion University in Brooklyn, N.Y. Although illness limited his playing time at CU, Brauer was a three-year starter at Sheepshead Bay High School where he averaged 27.5 points a game his senior year; Aaron Reger, a 6-5, 180 freshman from Anderson, In-

diana.

With such a strong lineup, Phillips is sure his team will get off to a better start this season. "We should definitely be able to get off to a better start than 0-8," he declared.

Saint Leo opens its 1991-92 season Friday, Nov. 22 at Saint Thomas University, then hosts Southeastern College at 7:30 p.m. Saturday, Nov. 23.

From Letter, p. 2

suspicion or rumor linking one to the breaking of school policy. Example: Henderson Hall room search where select students were locked up while their rooms were being checked, just so you know this is in fact illegal and can warrant a lawsuit on grounds of unlawful imprisonment. A line must be drawn between the enforcing of school policy and the privacy of the students.

It is our opinion that what an individual does in his/her room, without affecting others, is their own business. Students should feel secure in their dorm rooms not constantly worried about if what he or she is doing is in line with school policy. For example, **Did You Know** that if you and your buddies, of legal drinking age or not, are in an alcohol permitted dorm and playing a simple game of quarters, or any game for that matter related to drinking, you are breaking policy and could be put on disciplinary probation on just your first offense.

Looking into the handbook we also discovered another costly injustice imposed upon the students by Saint Leo's regulations. This has to do with the damages a student may cause, even if the

damage is accidental. School policy states, "Damage charges may be charges to individuals, specific groups or residence areas that are held accountable for the damages. These types are 'Individual' or 'Common'." **Note: DAMAGE CHARGES ARE CALCULATED AT 2 TIMES/TWICE THE ACTUAL REPLACEMENT/REPAIR COST.** We sympathize with the school and understand that damages cost the college serious money, and if an individual is caught destroying property then he/she should be held accountable for the cost. What we can't understand is why in the world the cost is doubled; it is simply wrong. I myself caused damages exceeding over \$350.00 and was charged over \$700.00 to have the damages taken care of. This was last year, and upon my arrival to school this first semester I saw that the damages were still there. I can only wonder what the money went to; they had double the amount to fix what had been broken. Another problem with the damage policy is that if something is split up among the students who live in that dorm, on that floor, the cost is still doubled. For example, if a paper towel holder was ripped off the wall from someone who lived in another dorm, the residents of

that floor are held responsible and are required to pay for the damages unless the guilty party is found and how are we suppose to watch our halls to stop incidents that cause damages is beyond me, like we as students are not busy enough that we have time to watch the halls.

With many of us students participating in different organizations, groups, clubs and of course weekends, our room cleanliness at times is not high on our list of priorities. So it is important for you to know that our school policy dealing with room cleanliness is, "...room inspections may be made by staff to insure reasonable cleanliness standards are being met...; repeat violations will be considered a violation of the insubordination policy (1st offense = CONDUCT PROBATION, \$25 fine). This is just absurd, and is truly unfair. Who's to say to another what is and is not acceptable in accordance to such a policy. In talking with an RA, he defends it by arguing that it is rarely enforced and "...never really checked." Then why have it? The room of this RA and another that I was in earlier that day was a violation of cleanliness if I had ever seen one. The room had empty beer cans and half empty beer cans spilled over the floor (this dorm is sup-

posedly alcohol free), bottles and cans of spit from dip scattered around and some spilled over, a smell similar to a portable public toilet, papers and wrappers flooded the floor and a bathroom that wasn't fit for a pig. I wonder who checks their rooms?

It is a shame that an article such as this has to be written, but it does and it is over due. The policies of this school have become too strict and are stunting the social life of many students at Saint Leo. I direct this letter towards mostly students, but I feel that they probably understand already the points I make. So it is to the members of the Residential Life Staff I plead, think reasonably and understand that we are young adults and should be treated as such. Why can't we party, celebrate, drink (of age) and do all in a reasonable manner without having to worry about unfair school policies. It is said "who governs least, governs best" so why tie students down with restrictions, instead free them with trust. We all will be better for it making Saint Leo what it should be, and according to alumni once was, a college with great social and academic atmospheres that offers a great time along with a great education.



**For Fast
Hot Delivery
CALL**

TRAVERSE CITY
1121 East Front Street
Traverse City, MI 49684
Phone
(616) 941-1767

DADE CITY
426 N. 7th Street
Dade City, FL 33525
Phone
(904) 567-9424

CLERMONT
1041 W. Hwy. 50
Clermont, FL 32711
Phone
(904) 394-8595

HOURS
MON. - SAT: 10:00 a.m. - 1:00 a.m.
SUNDAY: 12:00 Noon - 1:00 a.m.

GJ's PIZZA

Buy One Pizza - Get One Free!
You also receive a quart of Pepsi
with each Pizza Order

	Sm.	Med.	Lg.
Cheese	5.15	7.10	9.55
Cheese & One Item	6.10	8.15	10.65
Cheese & Two Items	6.90	9.10	11.75
Cheese & Three Items	7.70	9.95	12.85
Cheese & Four Items	8.50	11.00	13.95
GJ's Deluxe Special	9.35	11.55	14.45
Special Orders -			
5 or More Items	.80 ea.	.90 ea.	1.00 ea.
Extra Sauce			Free
Vegetarian Special	9.95	12.05	14.95
Chef's Salad			2.95
Large Pizza Slice			1.25

BEVERAGES

Items Available On GJ's Pizza	M	QT
	.50	.95
Pepperoni		
Mushrooms		
Bacon		
Green Peppers		
Green Olives		
Anchovies		
Ham		
Onions		
Ground Beef		
Black Olives		
Italian Sausage		
Pepsi Cola		
Diet Pepsi		
Mountain Dew		
Root Beer		

GJ's Subs 30 Delicious Varieties

"HOT FROM THE GRILL"

	8''	12''
GJ's Original Sub Italian Meats & Cheese	3.20	4.75
Jumbo Original GJ's Original with Extra Meat & Cheese	3.80	5.65
Salami Sub & Cheese	3.25	4.90
Pizza Sub Pizza Sauce, Cheese, Pepperoni, & Mushrooms	3.25	4.90
Italian Sausage And Melted Cheese	3.25	4.90
Roast Beef And Melted Cheese	3.25	4.90
GJ's Deluxe Supreme Ham, Salami, Pepperoni, Cheese, Mushrooms, & Green Peppers	4.25	5.95
GJ's Vegetarian Special Any Combination of Mushrooms, Sweet Peppers, Black Olives, Cheese	2.90	4.30

Steak Subs

Featuring USDA Choice
New York Strip Steak

Steak & Cheese Sliced Wafer Thin with Melted Cheese	3.40	5.10
Jumbo Steak & Cheese Extra Meat & Cheese	3.95	5.95
Mushroom Steak Tender Juicy Steak & Mushrooms	3.40	5.10
Mushroom Steak & Cheese Add Melted Cheese	3.65	5.45
Pepper Steak & Cheese Diced Sweet Peppers & Steak	3.65	5.45
Pizza Steak & Cheese Steak, Pizza Sauce, Melted Cheese	3.60	5.35

	8''	12''
Pizza Steak & Mushrooms Steak, Pizza Sauce, Cheese, Mushrooms	3.70	5.55
Jumbo Pizza Steak Extra Meat & Cheese	4.05	5.95
GJ's Steak Special Mushrooms, Sweet Peppers, Pizza Sauce, & Cheese	3.80	5.65

BURGER SUBS

World's Longest Cheeseburger Ground Round with Melted Cheese	2.95	4.55
Jumbo Cheeseburger Extra Meat & Cheese	3.65	5.45
Pepperburger & Cheese Diced Sweet Pepper & Ground Round	3.25	4.90
Pizzaburger & Cheese Ground Round & Pizza Sauce	3.15	4.70
Pizzaburger & Mushrooms Add Delicious Mushrooms	3.35	5.05
Jumbo Pizzaburger Extra Meat & Cheese	3.70	5.45
Mushroomburger & Cheese Add Mushrooms & Melted Cheese	3.25	4.90
GJ's Burger Special Mushrooms, Green Peppers, Pizza Sauce, & Cheese	3.80	5.65
Bacon Burger & Cheese	3.15	4.65

HAM SUBS

Ham & Cheese Sweet Ham & Cheese	3.25	4.90
Jumbo Ham & Cheese Extra Ham & Cheese	3.80	5.65
Fried Ham & Cheese Melted Cheese & Fried Ham	3.25	4.90
Jumbo Fried Ham & Cheese Extra Ham & Cheese	3.80	5.65
Additional Items	.45	.65

All Submarines Include • Crispy Fresh Lettuce • Red Ripe Tomatoes • Chopped Onions • and GJ's Own Sauce