



MONARCH

Inside This Edition...

- Letter to the Editor . page 2
- Grad. Ceremony page 3
- Career Corner page 4
- Computer Club page 5
- Dean's List page 6
- Sports Schedules page 7

Volume XXIX Issue 5 A Student Publication of Saint Leo College

March 21, 1994

Spring Break Alternative - trip to Belize

Reprinted from the Slate

Thursday, March 10, 1994, inaugurated a new beginning for our Saint Leo College community. Ten of our students along with Fr. Mike O'Brien, director of Campus Ministry, and Br. Rick Hugli, O.S.B., director of the trip, left for Belize, Central America for a seven day "Spring Break Alternative."

The Spring Break Alternative is a week-long, spring break immersion trip, where participants work with poor and marginalized people. It is called an "alterna-

tive" because it is obviously different from going to the beach, or just going home. The trip was a week-long learning, growing, and sharing experience. The costs of the trip were met by the participants themselves and, more often than not, are less expensive than any other spring break trip. This year, Student Leadership Coalition cosponsored the event with help from student parish stewardship.

In addition, Spring Break Alternative works as part of the Campus Care Ministries of Saint Leo College, where it fulfills

the roles of recruiting participants to a more continuous work for justice as well as re-energizing those already working for justice.

What will Spring Break Alternative mean to the participants? To be a part of a Christian group, committed to living out one's faith through prayer and action. To begin to understand better socio-economic and political problems which developing nations like Belize face. To begin a process of giving and receiving where people from different cultures and church experiences mutually discover the

riches of each other's worth, dignity and God-given potential. To deepen a "preferential option for the poor" and simplicity of lifestyle. To deepen a sense of commitment to God's people at home and abroad and to respond to the call to be prophetic followers of Christ.

The ten college missionaries are Cheryl Asmussen, Pat Aylward, Joe Begansky, Anthony Dico, Bill Driver, Margie Foley, Justine Massey, Kim Quinn, Mary Rogers and Jamie Welu. Monsignor Mouch commissioned them at a special Sunday liturgy on March 6.

New hall in works for fall semester

By Thomas Turcotte
Editor

Residential Life has several plans for next semester. The two major plans involve the building of a new residential hall for the next academic year and the complete gutting and remodeling of Roderick Hall.

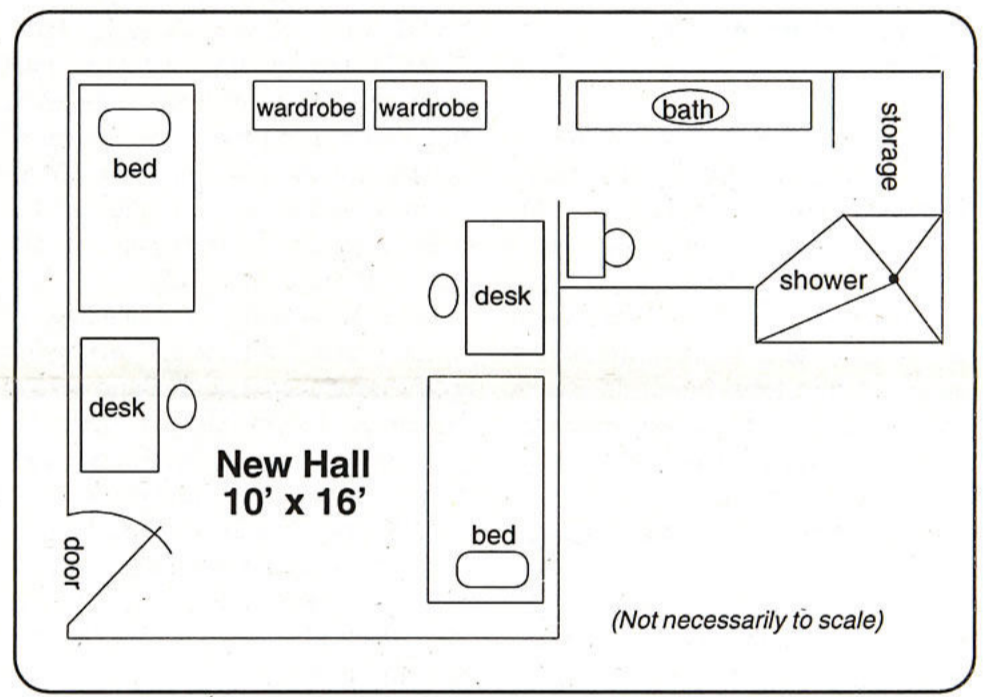
The planned residential hall will be built between the basketball court and Roderick. It will be a co-ed dorm housing 50 students. The hall will be composed of double rooms with private baths. Furniture will be similar to that found in Benoit and Henderson. It is expected to be open to students for the fall 1994 semester.

Roderick will be gutted and remodeled into apartments for 93 students. Each apartment would consist of four single

bed rooms, two baths, a living room, and a small kitchenette with a sink and a refrigerator. Roderick will be completed in time for the spring 1995 semester.

Saint Edward Hall will eventually be converted entirely into faculty offices. However, next year both the second and third floors will remain open to students until the completion of the new hall and Roderick renovation. Saint Edward Hall's second floor will be open to women next semester.

Charles Macke, director of residential life, explained that the students are being provided with quality halls, but it is up to the students to keep them that way. He has had few problems with students, and believes that the students will take care of the new halls.



Saint Leo theatre majors compete for acting award

Special to the Monarch

Three Saint Leo College theatre majors competed for the prestigious Irene Ryan Acting Award in early February at Clemson University. D. Scott Graham, Ginger Sheehy, and Jessica Lyn Simmons represented the theatre program at the competition. The students won the chance to enter the regional level of the national competition for their performances in the recent Saint Leo College Theatre production of *The House of Blue Leaves*.

Each student had five minutes to per-

form two scenes, one of which must be with a partner. Michael Fagnoli partnered Graham and Gerard Lamar Witman partnered Sheehy and Simmons. Associate Professor of Theatre, C. David Frankel, accompanied and coached the students for the competition.

Graham and Simmons, both seniors, have participated as competitors before. For Sheehy, this year marks a change from last when she went to the competition as a partner. Fagnoli and Witman (both sophomore theatre majors) attend-

ed the regional festival for the first time.

The award, a component of the Kennedy Center American College Theatre Festival, brings together theatre students from across the nation. The competition at Clemson is one of nine regional levels; winners at the regional level will compete for the national award at the Kennedy Center.

Established by Irene Ryan (most well-known for her character of "Grannie" in *The Beverly Hillbillies*), the award provides financial assistance for graduate

school. The regional winners are selected by a panel of three judges and must perform the same audition at the national level.

The preliminary rounds of the competition was on Wednesday, February 2; regional finals followed the next day. While at the festival the students also had an opportunity to see several productions that also competed for a chance to perform at the Kennedy Center and to participate in workshops designed to enhance their acting skills.

Saint Leo Community Orchestra performs

Special to the Monarch

The Saint Leo Community Orchestra presented its winter concert on Thursday, March 3 and Saturday, March 4 at 7:30 p.m. in the Saint Leo College Theater.

The program consisted of some of the best known music and best loved composers in the orchestral repertoire. A symphony by Haydn and an overture by Beethoven represented the elegant Classical period. Romantic spirits enjoyed the vivacious "Light Cavalry Overture" by

von Suppe, and the beautiful Pachelbel "Canon in D" has a universal appeal.

The 22-member orchestra is under the direction of Dr. Daniel Delisi, of the Saint Leo College music department faculty. It is a new ensemble comprised of students from the college and residents of surrounding communities.

"Our area needed an ensemble like this," said Delisi, "to provide playing opportunities for students and community musicians, as well as for people who enjoy listening to live performances of classical

music."

Delisi, who also directs the Saint Leo Oratorio Society, auditioned players for the orchestra during the fall, and the group has already performed successfully at December's Holiday Community Sing, Saint Leo College's annual musical gift to the area.

There are still openings for a few additional players with the orchestra, especially in the strings and double reed sections. Anyone interested should contact the music department at (904) 588-8294.

Index

- Editorial page 2
- On-Campus page 3
- Spotlight page 4
- In Focus page 5
- Dean's List page 6
- Sports page 7

EDITORIAL

LETTERS FROM THE EDITOR

By Thomas Turcotte
Editor

As this will likely be my last editorial for the Monarch, although there will be an April issue, I would like to take this opportunity to look back at my four years at Saint Leo College.

I have heard an immeasurable amount of complaints about the college since I have arrived here as a freshmen in 1990. In fact, it is true that I have offered my share of constructive criticism in many of my editorials. Students have complained about virtually every aspect of the college. Some of these complaints were based in sound rea-

son, and some were simply complaints.

However, regardless of my consistent criticism in my editorials, I have gained a great deal through my college experiences at Saint Leo. Through success in my classes, I have grown in knowledge. Through my participation in the Honors program, I have enhanced my capacity for reason and expression. Through the Catholic environment, I have found myself growing closer to God. Through interaction with my friends, I have grown socially, and through all my experiences I have matured over all as a person.

Despite the complaints that students have offered about Saint Leo, it remains a place where countless opportunities are offered to

eager students. The college offers an outstanding group of faculty along with several challenging majors. For those who seek an additional challenge, the college offers both the Honors program and a wide variety of extracurricular activities. Through the Catholic tradition of the college, Campus Ministry, the Knights of Columbus and the Benedictine presence, the college offers a strong opportunity for spiritual growth. Through the sororities, the fraternities, the Student Leadership Coalition, the close proximity to several major cities and the general friendly demeanor of most of the students, there are numerous possibilities for an active social life. These academic,

extra-curricular, spiritual and social activities are all there for the taking, and for an eager student the college offers a very fulfilling four years.

I am pleased that, as I look back, I have taken advantage of many of the opportunities that I was presented with. The past four years of my life have been invaluable to my overall development, and they have prepared me for what I am certain will be a promising future. It will be a four years that I will never forget, and I would like to thank everyone whom I have had the pleasure to share it with.

Thank you!

Ron's World revisited

By Thomas Turcotte
Editor

In our last issue, the *Ron's World* column remarked on how high the ratio is between administrators and faculty. The writer had taken a copy of the phone directory of the college, and compared the number of faculty listed in the directory to the number of administrators listed in the directory. Based on this research, the writer found that there were approximately nine administrators to every ten faculty members. If the writer's findings were valid then indeed this would be a shocking ratio.

However, a recent discussion with Dr. Edwin Doran, vice president for academic affairs; Kathy Bell, director of human resources; and Jerry Dyer, assistant vice president of academic affairs, Center for Distance Learning (CDL) showed that these results were far from accurate and were actually very misleading. They explained that the writer had unintentionally overlooked a number of things.

The column overlooks the fact that the majority of SLC faculty teach at off campus sites and are not listed in the directory, and that the predominance of the on-campus administrators' work, (those listed in the directory) is concerned with the off-campus faculty and their students. Most of the administrative staff, in fact, supports the operation of CDL and not the main campus. What the majority of Saint Leo College's main campus students either overlook or are entirely unaware of is the fact that their enrollment is in the minority compared to the 11 military bases and two civilian sites at which Saint Leo offers courses. Enrollment is measured by the number of credits a student takes each year. According to the CDL office, the approximately 1,000 main campus students' total enrollment is around 10,000 credits. This is compared to the 50,000 credit enrollment of the Center for Distance Learning's 6,000 students.

As one might expect, there are a large number of faculty who deal solely with

the off-campus courses. There are 13 full-time CDL faculty, 163 on one year annual contracts and, at any one time, between four hundred and five hundred adjunct faculty. However, the on-campus administrators must divide their attention between both the on-campus and the off-campus students and faculty.

To recalculate the column's ratio of administrators and faculty, the writer would have to consider both the on and off-campus faculty, and not simply the on-campus faculty, as the on-campus administrators are constantly working with both groups. Therefore, when the total number of administrators, which is 16, is compared to the total number of all faculty, which is between 637-737, the ratio is vastly diminished.

The column clearly loses any major point it was attempting to make, when all of this new information is considered. At the time of the original column, we were unaware of the oversight in the column. We sincerely apologize for any problems that the appearance of the incorrect information may have caused.

Place
Your
Ad
Here!

Call the Monarch
(904) 588-8355

Financial services seminar



- \$ How can I make ends meet on my paycheck?
- \$ How do I know what my credit rating is?
- \$ How can I better manage/save my hard earned dollars?

Learn the answers to these questions by attending a seminar by Helen Dunn from Consumer Credit Counseling Services (CCCS) on March 24 from 4-5 p.m. in the Southard Room in the library. All faculty, staff, administration,

and students are welcome to attend. CCCS is a reputable not-for-profit financial counseling service. Please call Renee Borns in the Career Development Center at ext. 8346 by March 21 to register for this seminar.

MONARCH

1989-1990 ASPA First Place with Special Merit
1989-1990 CPA Second Place with Special Honors
1988-1989 ASPA First Place Winner

Editors:
Thomas Turcotte, Editor
Jennifer Headley, Associate Editor

Copy Editor: Ron Broz
Advisor: Judith Rochelle

Design Editor: Glenn Ladwig
Sports Editor: Derick Headley
Office Manager: Fred Ramlow

The *Monarch* is a student publication, written by the students, designed by the students and published in conjunction with the Office of Public Affairs.

The opinions and stories expressed in the *Monarch* are not necessarily the views of the Editor or of Saint Leo College. We invite all old and new students to join the *Monarch* staff. If you have any input into this publication, send it to: The *Monarch*, P.O. Box 1, Saint Leo, FL 33574, stop by or call the *Monarch* office located in Saint Edward Hall, room 238, (904) 588-8355.

Full responsibility for the material that appears in this publication rests with the Editorial Board. Opinions expressed in columns or letters are not necessarily the views of the editors or of Saint Leo College. Editorials appearing in the *Monarch* are published with the express consent of a majority of the Editorial Board.

All Letters to the Editor must be typed, double-spaced, one side on a page and contain a maximum of 250 words. All letters must be signed and include an address and telephone number for verification purposes. Unsigned letters will not be published but names may be withheld upon request. Due to limited space, all letters may not be printed. The *Monarch* reserves the right to edit letters. The opinions expressed in letters are those of the author.

Please submit letters to the *Monarch* Office, room 238 in Saint Edward Hall or to the Office of Public Affairs, room 7 in Saint Francis Hall the Monday ten days prior to publication.



ON-CAMPUS

Changes planned for graduation ceremony

By Thomas Turcotte
Editor

The 1994 graduation, for an estimated 325 graduates, will be structured differently than it has been in the past. Prior to this year, the baccalaureate mass was held in the morning, followed by a lunch and the actual graduation ceremony was held in the afternoon. This year there will be no lunch. Instead, beginning at 1:30 p.m. on April 30, the baccalaureate mass will be held first, and it will be immediately followed by the graduation. The sermon at the mass will be given by the Reverend Charles J. Beinre S.J. of the Latin American Studies Center at Stanford University. Following the conclusion of the graduation, there will be a reception in McDonald Center for the graduates and their families.

The change in schedule is due to the ever increasing size of the crowd that has been attending the past few graduations. Last year, several people had to stand throughout the day, and many people were unfed due to an unplanned shortage of food. According to Dr. Maribeth Durst, professor of sociology and one of the organizers for the graduation, they are altering the schedule to avoid the problems of the past. Durst explained that "we do not want to send students off with their last memories of Saint Leo to be negative ones."

Recently on March 3, the senior breakfast was held to provide the seniors with specific information they will need concerning graduation. Anyone who has a question concerning graduation should contact Dr. Maribeth Durst at x8305 or the Office of Alumni Relations at x8250.

Tampa police chief addresses Saint Leo seniors

Special to the Monarch

Bennie R. Holder, chief of police in Tampa, was the featured speaker at Saint Leo College's annual senior breakfast on Thursday, March 3, 1994 at 7:30 a.m. The breakfast was hosted by the College's office of alumni relations. It was created as an opportunity to prepare graduating seniors for the logistics of the commencement process and introduce them to the support network of the alumni association.

Holder's remarks were all the more meaningful as he is a 1989 graduate of Saint Leo, with a bachelor's degree in criminology. He received his A.A. from Hillsborough Community College. He spent four years in the United States Air

Force prior to joining the Tampa Police Department in 1973.

His extensive list of organizational commitments includes the Tampa Bay Area Chiefs of Police Association, Florida Police Chiefs Association, International Association of Chiefs of Police, Police Executives Research Forum, Fraternal Order of Police, National United Law Officers Association, National Organization of Black Law Enforcement Executives (NOBLE) (of which he is past treasurer and corresponding secretary and current Sector 4 vice president), and Tampa Crossroads, Inc.

Holder was the 1989 executive member of the year of the Florida chapter of NOBLE and in 1993 received a community service award from the Mt. Olive A.M.E. Church.

American Marketing Association hosts guest speaker

Special to the Monarch

Kieran Gable, product manager with Cellular One, Tampa, Florida, delivered a dynamic presentation during the January 1994 Professional Development Meeting of the Saint Leo College Chapter of the American Marketing Association. Gable spoke about her involvement in

marketing current Cellular One products as well as her development of a plan to market a new Cellular One product during spring 1994.

Her informative presentation also focused on suggestions to help students get that first job and how to maintain that job or migrate to another position in their industry.



<p>BUY ONE GET ONE FOR 59¢ 6" SUBS</p> <p>Buy any regular 6" sub and get one of equal or lesser value for 59¢ with the purchase of any drink.</p> <p>SUBWAY</p> <p>Not valid with any other offers. At participating stores. Limit one coupon per customer/visit. Buy up to 4.</p> <p>6" SUBS ONLY \$1.50</p> <p>Buy any regular 6" sub for only \$1.50 with the purchase of any drink.</p> <p>SUBWAY</p> <p>Not valid with any other offers. At participating stores. Limit one coupon per customer/visit. Buy up to 4.</p>	<p>BUY ONE GET ONE FOR 99¢ FOOTLONG SUBS</p> <p>Buy any regular footlong sub and get one of equal or lesser value for 99¢ with the purchase of any drink.</p> <p>SUBWAY</p> <p>Not valid with any other offers. At participating stores. Limit one coupon per customer/visit. Buy up to 4.</p> <p>FOOTLONG SUBS ONLY \$3.00</p> <p>Buy any regular footlong sub for only \$3.00 with the purchase of any drink.</p> <p>SUBWAY</p> <p>Not valid with any other offers. At participating stores. Limit one coupon per customer/visit. Buy up to 4.</p>	
<p>ZEPHYRHILLS at La Plaza 5408A Hwy. 301 (813)782-1381</p>	<p>STUDENTS Stop In For A 10% DISCOUNT CARD</p>	<p>DADE CITY at The Landings 2019 US Hwy. 301 (904) 521-7000</p>

Don's Towing and Auto Salvage

24 HOUR TOWING

Engines * Transmissions * Tires * Body Parts

Mechanic on Duty

4175 Pasco Road—San Antonio, FL 33576
(904) 588-3828

We accept Checks, VISA and MasterCard

Open 7 DAYS

EXCELLENT EXTRA INCOME NOW!

ENVELOPE STUFFING — \$600 - \$800 every week

Free Details: SASE to
International Inc.
1375 Coney Island Ave.
Brooklyn, New York 11230

SPOTLIGHT

Career Corner

Career Videos on Channel 57

Ready...Set...Go! For Successful Interviewing—Monday, March 21, 1994 at 4 p.m.

How To Get A Job—Thursday, March 24, 1994 at 4 p.m.

Effective Interviewing Techniques—Monday, March 28, 1994 at 4 p.m.

Ready...Set...Go! For Successful Interviewing—Thursday, March 31, 1994 at 7 p.m.

Gaining the Competitive Edge with Business Etiquette (Part I and II)
Monday, April 4, 1994 at 4 p.m.

Effective Interviewing Techniques—Thursday, April 7, 1994 at 7 p.m.

How To Get A Job—Monday, April 11, 1994 at 4 p.m.

Spring 1994 Workshops

How to Make That First Paycheck Count—Thursday, March 24, 4-5 p.m.

Southard Room, Library (see article on page 2)

Learn all about credit and how to budget your money correctly with Helen Dunne from Consumer Credit Counseling Service.*Please register for this workshop in Career Development Center by March 21, 1994.

Food and Dieting Concerns—Thursday, March 24, April 14 at 7 p.m. Saint Edward Hall

Discuss issues related to food, diet, and other attempts at weight control in a private, confidential group. Facilitated by an outside experienced professional.

*For more information, please call Nurse Bobbi Sponheim or Dr. Jo Ann Quinn. Facilitator: Brenda Crawford Clark.

Motivational Speaker—Monday, March 28 at 7 p.m.

USF, Tampa Campus University Center-Ballroom

Plan to attend this inspirational presentation by Bobby Petrocelli. He will touch your life through his story of a tragic accident in which a drunken driver took the life of his young wife and changed his life forever. His message is about moving forward with life, finding triumph over tragedy, and growing in the process.

*Please call Dr. Jo Ann Quinn for more information.

Summer Institutes and Programs

Live, Learn and Intern in Washington this Summer—June 8-July 23, 1994

The Fund for American Studies, Georgetown University

A Celebration of Multiculturalism Through Enlightenment—April 15-17, 1994

World Summit '94, University of Central Florida

The American University of Paris Summer 1994

Travel in Europe, Israel and Russia in 1994—AESU

Dow Jones Newspaper Fund Inc.

1994 Newspaper Fund Reporters
Scholarship \$1,000

Institute for International Cooperation and Development, Inc.

Programs to countries in Africa
and Latin America 1994/1995

The Capital Experience Makes the Professional Difference

Institute for Experiential Learning
Washington D.C.

The Franklin Life Insurance Co. Junior/Senior Internship Programs

For information on any of these programs contact Reneé Borns, career development coordinator at ext. 8346.

Professor appointed to State Committee

Special to the Monarch

Dr. Maribeth Durst, professor of sociology at Saint Leo College, has been appointed to the State Board of Independent Colleges and Universities (ICUF) by Governor Lawton Chiles.

Durst has been at Saint Leo since 1979. She received her undergraduate degree at Saint Mary's University in San Antonio, Texas, her master's from Syracuse University and her Ph.D. from the New School for Social Research in New York, as well as receiving her certification as a counselor.

During her tenure at Saint Leo, Durst has served as chairperson for the Division of Freshman Studies, assistant vice president for academic support services, and associate vice president for enrollment management. Durst has published extensively in professional journals.

The ICUF Board is a nine-member organization of gubernatorial appointees and is charged with maintaining quality education and ensuring consumer protection at all independent colleges and universities in Florida except those institutions accredited by the Southern Association of Colleges and Universities.

CIRCLE K'S 2ND ANNUAL KISS THE PIG CONTEST

Who do you want to see kiss the pig?

- ☺ MONSIGNOR MOUCH
- ☺ FATHER MIKE
- ☺ SISTER GERALDINE
- ☺ THAMIR KADDOURI
- ☺ SCOTT HILL
- ☺ ALAN MERSON
- ☺ LIZ SCUGGS



PLEASE PLACE YOUR CONTRIBUTIONS IN THE APPROPRIATE BOXES LOCATED IN THE STUDENT AFFAIRS LOBBY OR IN THE McDONALD CENTER CAFETERIA. THE PERSON WITH THE MOST MONEY IN HIS OR HER BOX WILL KISS THE PIG IN THE CIRCLE ON MARCH 25 AT 5 P.M.

All contributions will go to needy AIDS patients.

Monarch Meeting!

Every Thursday at 6 p.m.
in St. Ed's, room 238 (x8355).

Staff Writers Needed.

Earn \$5 for every story you write!

IN FOCUS

Computer club teaches students the wave of the future

By Jennifer Headley
Associate Editor

In today's society it is almost impossible to get along without any knowledge about computers. Even in something as simple as typing a term paper the computer has become almost a necessary component in completing one successfully. The most complaint with people about computers is how difficult it is to use them. Although computer use is most beneficial, they wouldn't know where to begin.

Well, here may be your answer! Saint Leo College has a computer club whose main purpose is to educate those interested in computers in their use. This is a fun way to be educated by peers, while attending seminars and keeping up to date with the newest information.

How do I get involved, you ask? Joe Begansky, the president of the computer club, can be reached at extension 8694, and is willing to answer any questions that you might have about the club. Until then, their tentative schedule is as follows: On the first Wednesday of every month, the club meets in the computer center at 3:15. On the second Wednesday of every month, tutoring sessions will be held in the computer lab. On the third Wednesday, the computer club has an announced activity. On the fourth Wednesday, the computer club holds another tutoring session.

So come along to the computer club and learn more about computers. Learn how to make your term papers look fantastic, and have fun while you learn. From now on, you won't be able to complain about how the computer seems to have it out for you.

Greeks fight to preserve student enrollment

By Jennifer Headley
Associate Editor

With the current student enrollment down, there have been several attempts to find an incentive to help students stay involved and interested on campus. The most recent attempt at improving the student enrollment and decreasing the drop out rate, has been attempted by the Greek system of Saint Leo College.

The Greeks are inviting anyone who is non-Greek to come and view the advantages that Greek life can give someone who doesn't feel comfortable or who feels left out on campus. The Greek system, which includes the Panhellenic sororities (Phi Mu, Phi Sigma Sigma, Theta Phi Alpha and Sigma Sigma Sigma) and Interfraternity organizations, include Theta Zeta, Tau Kappa Epsilon, and the newest fraternity, Phi Kappa Theta. Phi Kappa Theta cannot accept pledges at this time, but wants to participate in getting to know the students better.

One of the most important aspects of student life is for the students to feel at home. The Greeks feel that by pledging a fraternity or sorority, a student may find

the organization that may keep the balance between school and campus life.

The Greek system offers a variety of academic advantages, too. Many of them offer scholarships to their members. The Greeks also have many activities to maintain involvement such as Greek Week and Fall Festival Weekend. In fact, in any organization on campus there tends to be a substantial number of Greeks who serve in many leadership roles.

I've started pledging a sorority (Phi Mu). Although it has been only four weeks into my pledging period (which the sorority I'm pledging calls a Phi learning period), I have felt a lot of encouragement and involvement with the sisters. Whenever I need anything or just want to hang out, the sisters of Phi Mu are there. They have been more than receptive to helping me.

For me, pledging was one of the best things that I could have done. Now while I realize that pledging is not for everyone, I do believe that the Greeks have a valid point. In order to be a more well rounded student, it is important to get involved in something. If it's not the Greek system, make it something.

Environmental science major to begin in fall

By Jennifer Headley
Associate Editor

In the last issue of the Monarch, I discussed the possibility of an environmental science major at Saint Leo College, pending approval, to begin in the fall. Well, as of February 18, environmental science was approved as a major to be offered in the fall. The first Saint Leo graduates with this major will be in 1996.

The environmental science major will train students in resource management and will also prepare the student for graduate studies in environmental science. Students who graduate from this program will graduate with a bachelor of science in

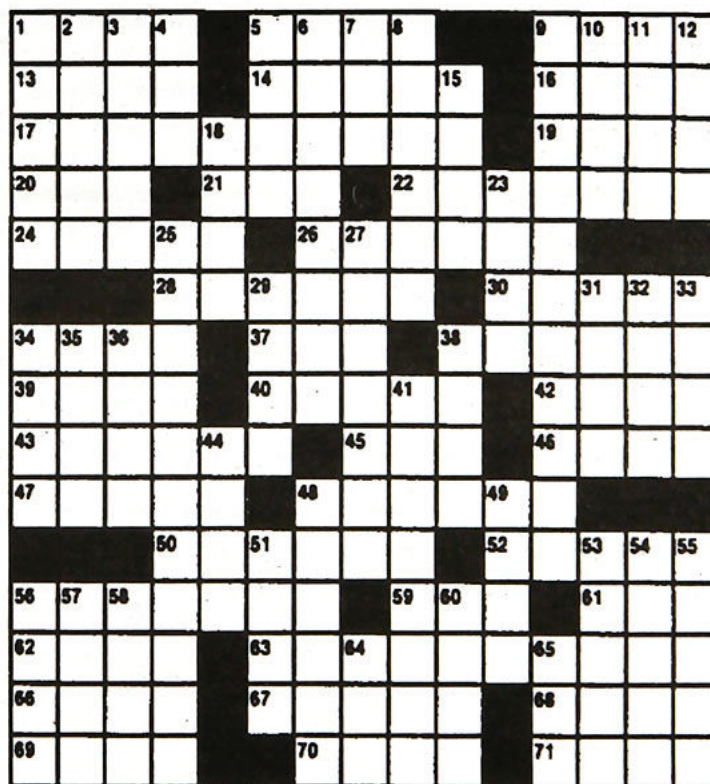
environmental science.

With an environmental science degree in hand, there are many career opportunities to consider. These include: environmental consulting firms, engineering firms, private conservation organizations, utility companies, federal agencies, state regulation and resource management, natural history museums and self employment. There are also internship programs for the students, to help broaden their interests.

For more information on the requirements of this major, or to see if there are any particular classes in environmental studies that might interest you, feel free to contact Dr. Patricia Dooris at extension 8335 on Tuesdays and Thursdays.

THE Crossword

- ACROSS**
- 1 Robert Frost e.g.
 - 5 Collections
 - 9 Marco —
 - 13 Church section
 - 14 — a time
 - 16 At any time
 - 17 "Easy Rider" star
 - 19 Omar's product
 - 20 Exist
 - 21 Scull
 - 22 Puts into
 - 24 Stinging insects
 - 26 Costume party guest
 - 28 Convoy
 - 30 Acquiesce
 - 34 Narrow opening
 - 37 Not at home
 - 38 Tubes for sodas
 - 39 Decline
 - 40 Valuable item
 - 42 "— o'clock scholar"
 - 43 Without principles
 - 45 Woodsman's tool
 - 46 Flower holder
 - 47 — code
 - 48 Isolate
 - 50 Water nymphs
 - 52 Acting award
 - 56 Certain bicycles
 - 59 — Aviv
 - 61 High card
 - 62 Court proceeding
 - 63 "Mr. Moto"
 - 66 Span
 - 67 Certain language
 - 68 Eager
 - 69 Lothario
 - 70 Rests
 - 71 Scatters hay to dry



©1994 Tribune Media Services, Inc.
All Rights Reserved

ANSWERS

- 7 Knockout count
- 8 Cruel one
- 9 "Mission: Impossible" star
- 10 Finished
- 11 Fast time
- 12 Dog scraps
- 15 Armored vehicle
- 18 Writer MacDonal
- 23 Throne e.g.
- 25 "— Wolf"
- 27 — crafts
- 29 Fuel
- 31 Pro —
- 32 Some sheep
- 33 Worker of old
- 34 Trade
- 35 Like some excuses
- 36 Aware of
- 38 Fr. holy women: abbr.
- 41 Alive
- 44 Wings
- 48 Artists' stands
- 49 Droop
- 51 Demons
- 53 Whittle
- 54 Harsh
- 55 Hollow stems
- 56 Autocrat
- 57 Atmosphere
- 58 Noite of films
- 60 Work units
- 64 Mai — (drink)
- 65 Kind of meal

SRD Automotive

- On-Campus Repair
- Major and Minor Repairs
- Mufflers
- Oil Change - \$16.95
- Oil Changes

- Free Towing on Campus
- General Maintenance
- Exhaust Systems
- Brake Work
- Tune Ups

\$5 Service Call on Campus

8 a.m. - 5 p.m. Monday - Friday
(904) 588-3291

DEAN'S LIST

Abarca, Alejandra A.
 Alexander, Deborah G.
 Anderson, Eric M.
 Arnesen, Stacy A.
 Arnold, Jeffrey W.
 Awe, Amini T.
 Bain, Andy M.
 Balderamos, Melissa L.
 Banke-Rodriguez, Michelle
 Bardunias, John P.
 Barnes, Charles A.
 Bay, Christopher M.
 Begansky, Joseph
 Berens, Michelle R.
 Bevans, Lliani A.
 Bimson, Stephanie A.
 Blackett, Michelle R.
 Bond, Nicole M.
 Branch, Frances T.
 Brennan, Robyn N.
 Browningkryder, Jayelle H.
 Budd, Dirk R.
 Bull, Anna S.
 Buller, Rebecca L.
 Burd, Eva M.
 Burns, William E. Jr.
 Butler, Maurice S.
 Buttelman, Stacey S.
 Cahoon, Renee E.
 Calhoun, Craig J.
 Cannon, Dawn M.
 Chapman, Clifford W.
 Chebra, James R.
 Cinella, Marc A.
 Colby, Lisa A.
 Conners, Alpha E.
 Corcoran, Erin A.
 Cournoyer, Jon T.
 Dannels, Tracey J.
 Danzak, David J.
 Darville, Kevin E.
 Debolt, Todd R.
 DeFiore, Pasquale J.

Dewji, Sabria
 Donahue, Katherine D.
 Doyle, David G.
 Driver, William E.
 Edwards Deborah O.
 Elliott, Greg L.
 Erskine, Maylin
 Essig, Lenee N.
 Eves, Brian A.
 Fair, Katheryn M.
 Farrington, Sharmie M.
 Ferguson, Barbara J.
 Ferrante, Deborah E.
 Ferrara, Neal E.
 Filomarino, Laura A.
 Filomarino, Lisa M.
 Finn, Matthew A.
 Flynn, Thomas P.
 Forrest, Scott J.
 Fortunato, Lisa A.
 Gearhart, Alissa L.
 Giordano, Deborah D.
 Glover, Sherry R.
 Goode, Denis L.
 Graham, Scott D.
 Griffin, Terri
 Hamann, Peggy A.
 Hassel, John W.
 Hauser, Kristen L.
 Hise, Jason D.
 Hopgood Lynn B.
 Horan, Shayne M.
 Hudson, Lawanda F.
 Jeffers, Dana R.
 Kaddouri, Thamir A. R.
 Kasprzak, Donna J.
 Keller, Nicole D.
 Kelly, Kip K.
 Kelly, Pamela J.
 Kingsley, Monica J.
 Kitchen, Julie R.
 Kranyecz, Michelle L.
 Kreckousky, Andrew M.

Ladwig, Glenn P.
 Landherr, Stephen M.
 Langlinais, Jennifer P.
 Lockhart, Sherie V.
 Lozinski, Lawrence J.
 Lucas, Brian M.
 Manhire John T. Jr.
 McConnell, Melissa S.
 McCoy, Donovan A.
 McDonald, Michelle A.
 McGowan, Leah A.
 Melton, Michael S.
 Memoli, Brian E.
 Mikusi, Cassandra M.
 Minion, Brian P.
 Moon, Ronald D.
 Mophuting, Mpho C.
 Murray, Joel N.
 Musielak Amy B.
 Nizza, Barbara A.
 Nowak, Mary A.
 Nowicki, Renae S.
 Nye, Jennifer J.
 Obrien, Thomas E.
 Odonnell, Kathleen
 Parworth, Mindy L.
 Passalacqua, Bettejo M.
 Patel, Hemali J.
 Perrone, Concetta M.
 Pineau, Karen M.
 Poffel, Elizabeth A.
 Quinn, Allain M.
 Quinn, Kimberly A.
 Ramlow, Frederick B.
 Rey, Jennifer C.
 Rice, Jeffrey C.
 Richards, Victoria E.
 Riggs, Daniel J.
 Rogers, Glen W.
 Ruiz, Juan C.
 Russo, Jennifer A.
 Rutherford, Ian S.
 Savick, Beth P.

Sheehy, Virginia A.
 Sigler, Deborah L.
 Simmons, Jessica L.
 Smith, Kevin W.
 Sola, Anita L.
 Sorrentino, Laura T.
 Spicher, Maureen D.
 Sposaro, Dinamaria
 Stone, John A. Jr.
 Stuber, Brian C.
 Taylor, Derek D.
 Testa, Paula C.
 Titus, Leah A.
 Travas, Marissa J.
 Trim, Sara M.
 Turcotte, Thomas P.
 Underwood, Kristyn M.
 Urtz, Charles J.
 Vanteffelen, Nadia Y.
 Vella, Rosa M.
 Vilchezherrador, Elaine N.
 Vincent, Christopher M.
 Vlasak, Jeannine M.
 Voto, Rosina
 Wagner, Shawn M.
 Ward, Jodi S.
 Warren, Jessica L.
 Washington, James M.
 Whalen, Christine E.
 Wiemer, Robby J.
 Williams, Joshua A.
 Williams, Teresa A.
 Williford, Alison K.
 Winton, Michael T.
 Witman, Gerard L. Jr.
 Woods, Denise S.
 Wormser, Valerie J.
 Wratchford, Stefanie A.
 Yarita, Go
 Zavalnak, Joseph F.
 Zillman, Kelly A.
 Zimmerman, William G.
 Zvi, Sheryl D.

In the next Monarch, we will print a list of all the graduate, law, and medical schools where seniors from Saint Leo College have been accepted. This list can only be compiled through your cooperation. As you receive letters of acceptance, we would appreciate your assistance in notifying us.

In addition, for those seniors who intend on immediately beginning their career, we also intend on printing a list where seniors have found employment upon graduation.

Thank you for your assistance.



.....

Attractive b&w newspaper seeking creative person for enjoyment and co-dependent relationship. Possible late-night fun. Must have open mind.

.....

Design Editor Wanted

for the Monarch.

Desktop publishing experience a plus, but not necessary.

Start training now for next semester's *paid* position.

Come to a meeting or call x8355.

SPORTS

Baseball team splits doubleheader

By Derick Headley
Sports Editor

The Monarch baseball team was trying to rebound from a four game losing streak when they faced C.W. Post for a doubleheader on Saturday. The Monarchs won the first game by the score of 6-5. Joel

Place was the winning pitcher in the game, with Josh Williams getting the save.

During the night game however, C.W. Post broke open the game in the eighth inning, scoring six runs, and went to win by the score of 8-2. The Monarchs record is 8-6, 0-3 in the Sunshine State Conference.

Lady Monarchs suffer three defeats

By Derick Headley
Sports Editor

In women's basketball, the lady Monarchs suffered three defeats in their last three games, losing at Florida Southern 88-52, a home game to Barry University 57-46; and to Rollins College on Saturday. The lady Monarchs are 8-17 overall, and 3-11 in their conference.



Saint Leo softball wins tournament

By Derick Headley
Sports Editor

The Saint Leo softball team opened its 1994 season with a sweep of the eight game Saint Leo Power Softball Tourna-

ment last week. The softball team outscored their opposition 76-12 during the three day event.

During the championship game of the tournament, Saint Leo trounced Shaw University by the score of 13-1.

Men's basketball wins quarter finals

By Derick Headley
Sports Editor

In the Sunshine State Conference Basketball Tournament March 5-7, the men's basketball team won on Friday, defeating

Florida Tech by the score of 87-74.

The Monarchs overcame an eight point deficit at halftime to advance to the semi-finals. In the semi-finals, the Monarchs lost to the University of Tampa the score of 82-70.

Wild Kingdom

By Anthony Rubino, Jr.

"The rush-hour traffic I'd just as soon miss, when car after car is moving like this."—Readers Digest

ASK MR. COLLEGE

Kill some time in that boring class! Write to Mr. College!

Q. Dear Mr. College: I recently saw a book about life's most embarrassing moments. What was your most embarrassing moment?—Kent, Lubbock, TX

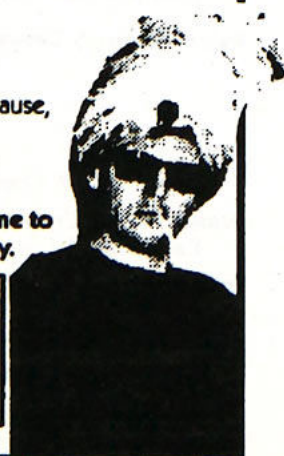
A. Dear Kent: My lawyers have advised me not to discuss that particular incident. All I can say is; it involved a sheep, 50 feet of bungee cord and three large containers of vegetable oil.

Q. Dear Mr. College: When I drive home from school on holiday weekends, it always takes me an hour longer than it should because of all the congestion and back up at the toll booths. If it wasn't for that, there'd hardly be any traffic at all. I know it's asking a lot, but in all your infinite wisdom, is there any way to solve my problem?—Tony, Glassboro, N.J.

A. Dear Tony: You were right to come to me. Here's what you do: When you approach a bottleneck caused by a toll plaza, work your vehicle to the farthest right lane. Make sure there's no police around, then slowly drive up the shoulder to about the third car from the front of the line. Motion for the driver to roll down his window. Then, inform him that if he will allow you to get in front of him, you will pay for his toll. When he lets you in, pay for your toll only, flip him the bird, and be on your merry way. Drive safely, and happy motoring!

Q. Dear Mr. College: Are you off to see the wizard? The wonderful wizard of Oz. The wonderful wizard is one because... because of the wonderful things he does. Because, because, because, because, because... because of the wonderful things he does.—Daryl, Somewhere in Kansas

A. Dear Daryl: Yes... the wizard. That's right Daryl... anything you say. Oh, and Daryl, the wizard wanted me to tell you to take your medication now, like a good boy.



HEY YOU!

Get your question answered by Mr. College!

Send questions, comments, and Totto too to:
Mr. College • P.O. Box 431 • Gaithersburg MD • 20884-0431

© Anthony Rubino, Jr. 1994 • Distributed by Tribune Media Services

1994 SPRING SPORT SCHEDULES

BASEBALL SCHEDULE

DATE	OPPONENT	LOCATION	TIME
Thu. March 24	Graceland (IN) College	Home	7:00 PM
Fri. March 25	* University of North Florida	Away	7:00 PM
Sat. March 26	* University of North Florida	Away	1:00 PM
Sun. March 27	* University of North Florida	Away	1:00 PM
Wed. March 30	Cardinal Stritch (WI) College	Home	7:00 PM
Fri. April 1	* University of Tampa	Home	7:00 PM
Sat. April 2	* University of Tampa	Away	7:00 PM
Mon. April 4	* University of Tampa	Home	7:00 PM
Tue. April 5	Embry- Riddle University	Away	7:00 PM
Fri. April 8	* Barry University	Home	7:00 PM
Sat. April 9	* Barry University	Home	7:00 PM
Sun. April 10	* Barry University	Home	2:00 PM
Wed. April 13	Webber College	Home	7:00 PM
Fri. April 15	* Florida Tech.	Away	3:00 PM
Sat. April 16	* Florida Tech	Away	1:00 PM
Sun. April 17	* Florida Tech	Away	1:00 PM
Wed. April 20	Webber College	Away	1:00 PM
Wed. April 27	Embry-Riddle University	Home	7:00 PM
Fri. April 29	* Rollins College	Home	7:00 PM
Sat. April 30	* Rollins College	Home	7:00 PM
Sun. May 1	* Rollins College	Away	1:00 PM
Wed. May 4	Valdosta State (GA) College	Away	7:00 PM
Fri. May 6	* Eckerd College	Home	7:00 PM
Sat. May 7	* Eckerd College	Away	2:00 PM
Sun. May 8	* Eckerd College	Home	2:00 PM

POST SEASON

May 20 - May 22	NCAA Division II South Regional	TBA
May 28 - June 4	NCAA Division II World Series	Montgomery, AL

Head Coach: John Schaly

SOFTBALL SCHEDULE

Fri. March 25	* Florida Tech.	Away	2:30
Sun. March 27	* Barry University	Away	1:00
Tue. March 29	* University of Tampa	Home	2:30
Thu. March 31	Valdosta State University (GA)	Away	3:00
Mon. April 4	Hillsdale College (MI)	Home	2:30
Tue. April 5	Spring Arbor College (MI)	Home	2:30
Fri. April 8	Kentucky Wesleyan Tournament	Away	TBA
Sat. April 9	Kentucky Wesleyan Tournament	Away	TBA
Sun. April 10	Kentucky Wesleyan Tournament	Away	TBA
Wed. April 13	* Eckerd College	Away	2:30
Thu. April 14	Webber College	Away	4:00
Fri. April 15	* University of North Florida	Away	5:00
Sun. April 17	* Florida Southern	Home	1:00
Tue. April 19	* Florida Tech.	Home	2:30
Thu. April 21	* Florida Southern	Away	6:00
Sat. April 23	* University of North Florida	Home	1:00
Sun. April 24	* Eckerd College	Home	1:00

Head Coach: Ray Carver

WOMEN'S TENNIS

Thu. March 24	* University of Tampa	Home	2:00 PM
Fri. March 25	Hiram College (OH)	Home	2:00 PM
Tue. April 5	Hillsborough C.C. (Exhib.)	Home	2:00 PM
Thu. April 7	Sunshine State Conf. Tournament	Away	8:00 AM
Fri. April 8	Sunshine State Conf. Tournament	Away	8:00 AM
Sat. April 9	Sunshine State Conf. Tournament	Away	8:00 AM

MEN'S TENNIS

Mon. March 21	Embry-Riddle University	Home	2:30 PM
Wed. March 23	* University of Tampa	Away	2:00 PM
Fri. March 25	Hiram College (OH)	Home	2:00 PM
Mon. March 28	University of Delaware	Home	2:00 PM
Wed. March 30	Southeastern Bible College	Away	3:00 PM
Mon. April 4	Embry-Riddle University	Away	2:30 PM
Thu. April 7	Sunshine State Conf. Tournament	Away	8:00 AM
Fri. April 8	Sunshine State Conf. Tournament	Away	8:00 AM
Sat. April 9	Sunshine State Conf. Tournament	Away	8:00 AM

Head Coach: Tim Crosby

* Denotes Sunshine State Conference game



**For Fast
Hot Delivery
CALL**

TRAVERSE CITY

1121 East Front Street
Traverse City, MI 49684
Phone
(616) 941-1767

DADE CITY

426 N. 7th Street
Dade City, FL 33525
Phone
(904) 567-9424

CLERMONT

1041 W. Hwy. 50
Clermont, FL 32711
Phone
(904) 394-8595

HOURS

MON. - SAT: 10:00 a.m. - 1:00 a.m.
SUNDAY: 12:00 Noon - 1:00 a.m.

GJ's PIZZA

Buy One Pizza - Get One Free!
You also receive a quart of Pepsi
with each Pizza Order

	Sm.	Med.	Lg.
Cheese	5.15	7.10	9.55
Cheese & One Item	6.10	8.15	10.65
Cheese & Two Items	6.90	9.10	11.75
Cheese & Three Items	7.70	9.95	12.85
Cheese & Four Items	8.50	11.00	13.95
GJ's Deluxe Special	9.35	11.55	14.45
Special Orders - 5 or More Items	.80 ea.	.90 ea.	1.00 ea.
Extra Sauce			Free
Vegetarian Special	9.95	12.05	14.95
Chef's Salad			2.95
Large Pizza Slice			1.25

BEVERAGES

Items Available On GJ's Pizza	M	QT
Pepperoni	.50	.95
Mushrooms		
Bacon		
Green Peppers		
Green Olives		
Anchovies		
Ham		
Onions		
Ground Beef		
Black Olives		
Italian Sausage		
Pepsi Cola		
Diet Pepsi		
Mountain Dew		
Root Beer		

GJ's Subs 30 Delicious Varieties

"HOT FROM THE GRILL"

	8''	12''
GJ's Original Sub Italian Meats & Cheese	3.20	4.75
Jumbo Original GJ's Original with Extra Meat & Cheese	3.80	5.65
Salami Sub & Cheese	3.25	4.90
Pizza Sub Pizza Sauce, Cheese, Pepperoni, & Mushrooms	3.25	4.90
Italian Sausage And Melted Cheese	3.25	4.90
Roast Beef And Melted Cheese	3.25	4.90
GJ's Deluxe Supreme Ham, Salami, Pepperoni, Cheese, Mushrooms, & Green Peppers	4.25	5.95
GJ's Vegetarian Special Any Combination of Mushrooms, Sweet Peppers, Black Olives, Cheese	2.90	4.30

Steak Subs

	8''	12''
Steak & Cheese Sliced Wafer Thin with Melted Cheese	3.40	5.10
Jumbo Steak & Cheese Extra Meat & Cheese	3.95	5.95
Mushroom Steak Tender Juicy Steak & Mushrooms	3.40	5.10
Mushroom Steak & Cheese Add Melted Cheese	3.65	5.45
Pepper Steak & Cheese Diced Sweet Peppers & Steak	3.65	5.45
Pizza Steak & Cheese Steak, Pizza Sauce, Melted Cheese	3.60	5.35

Featuring USDA Choice
New York Strip Steak

	8''	12''
Pizza Steak & Mushrooms Steak, Pizza Sauce, Cheese, Mushrooms	3.70	5.55
Jumbo Pizza Steak Extra Meat & Cheese	4.05	6.10
GJ's Steak Special Mushrooms, Sweet Peppers, Pizza Sauce, & Cheese	3.80	5.65

BURGER SUBS

World's Longest Cheeseburger Ground Round with Melted Cheese	2.95	4.55
Jumbo Cheeseburger Extra Meat & Cheese	3.65	5.45
Pepperburger & Cheese Diced Sweet Pepper & Ground Round	3.25	4.90
Pizzaburger & Cheese Ground Round & Pizza Sauce	3.15	4.70
Pizzaburger & Mushrooms Add Delicious Mushrooms	3.35	5.05
Jumbo Pizzaburger Extra Meat & Cheese	3.70	5.45
Mushroomburger & Cheese Add Mushrooms & Melted Cheese	3.25	4.90
GJ's Burger Special Mushrooms, Green Peppers, Pizza Sauce, & Cheese	3.80	5.65
Bacon Burger & Cheese	3.15	4.65

HAM SUBS

Ham & Cheese Sweet Ham & Cheese	3.25	4.90
Jumbo Ham & Cheese Extra Ham & Cheese	3.80	5.65
Fried Ham & Cheese Melted Cheese & Fried Ham	3.25	4.90
Jumbo Fried Ham & Cheese Extra Ham & Cheese	3.80	5.65
Additional Items	.45	.65

All Submarines include • Crispy Fresh Lettuce • Red Ripe Tomatoes • Chopped Onions • and GJ's Own Sauce