

Monarch

October 1996

Volume XXXI, Issue 1

A Student Publication of Saint Leo College

SAINT LEO WELCOMES DR. BAGLIONE

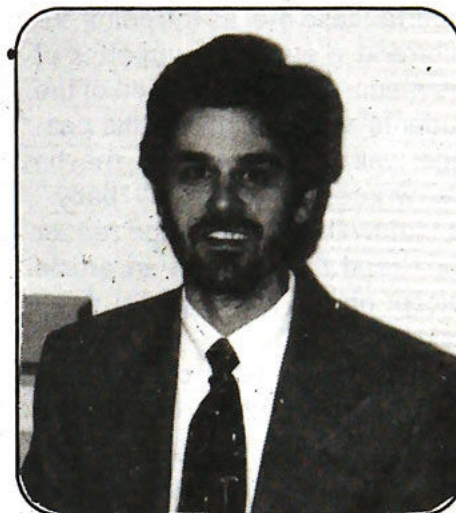
Saint Leo College's Business Department has a new member in Dr. Stephen Baglione. Dr. Baglione teaches marketing here during the week, and also teaches on weekends as part of the M.B.A. (Master of Business Administration) faculty.

Dr. Baglione comes to us from Gardner-Webb University in North Carolina where he held a teaching position. He was a student at Queens College in his native New York where he earned his Bachelors degree. Dr. Baglione then

migrated to South Carolina where he worked in the "real world" before earning his Masters and Ph.D at the University of South Carolina.

Dr. Baglione knew very early in career that teaching was the profession that he most desired to enter. While he still finds the business world fascinating, he feels that he can do the most good by teaching future professionals. Another way he does this, is by heading up Saint Leo's chapter of the American Marketing Association (A.M.A.).

The first meeting of the A.M.A. will be held on Tuesday October 8th at 7:00PM in the Lion's Lounge (adjacent to the cafeteria). The A.M.A. is not only open to business majors, but every student on campus wanting to obtain experience that will be helpful in any career. The Association participates in a spectrum of activities ranging from the sale of goods, to selling advertising for the *MONARCH*. If you would like more information on the A.M.A., contact Dr. Baglione at extension 8228.



Dr. Stephen Baglione

Photo by: Justin Godfrey

PYSCHOLOGY CLUB LOOKS FORWARD TO ANOTHER BUSY YEAR

Submitted by: Dr. Richard Bryan

On Friday, September 27, the Saint Leo College Psychology Club held its first full meeting of the 1996-1997 academic year. Nominations were taken for new officers of the club, and an election will take place the following week.

Whoever the new officers turn out to be, they will have a difficult time outdoing last year's leaders in terms of the number of events organized and carried out by what some have called "the most active organization on the Saint Leo Campus." During the 1995-1996 academic year the Club sponsored or helped organize five speaking events, three tours, two fund raisers, and two parties, along with their regular meetings.

In October of last year, Dr. V. Michael McKenzie was the club's first featured speaker. Dr. McKenzie is author of the book *Domestic Violence in America* and a member of Governor Lawton Chiles' Commission on Domestic Violence in Florida. Dr. McKenzie spoke about the "Spousal Battery Cycle" and why women stay in abusive relationships to a packed attentive audience.

Then, in early December, Frances Martin, M.S.W. talked to Club members and guests about the common problem of test anxiety. She offered many helpful ideas that students could use to cope with this problem when it arises.

Also, in the Fall semester the Club attended a presentation by Dr. Christopher Cronin, at that time a faculty mem-

ber of Flinders University of South Australia. Dr. Cronin's presentation on "sensation seeking behavior" was well received by the audience of faculty and students. In January 1996 Dr. Cronin joined the faculty at Saint Leo and soon became a strong supporter and co-moderator of the Psychology Club.

In the spring semester, Kathy Karamitsos (nee Goldfarb), an alumna of the psychology program at Saint Leo, came to tell students about her current position at "The Harbor" counseling center located in Dade City. She also recruited students from the audience who were interested in participating in volunteer work at the center.

Then, in March, the Club worked along with Dr. Nancy Gunter, Practicum Coordinator, to organize a group presentation by past and present Saint Leo psychology majors who had participated in the psychology internship program or were currently working in that program. Current interns included Michelle Blackett (now McKenzie), Kathy Fair, Margaret Foley, Amanda Quintana (all former Psychology Club officers), Elizabeth Costarella and Rita Seemungal. Alumnpresenters included Jan Green Valmassor ('87) case Manager at Sunrise Abuse Center; Mark Stober ('88), Mobile Crisis team of Mental Health Care, Inc.; Kim Hill ('88) Senior Behavioral Program Specialist at the Florida Mental Health Institute and part-time graduate student in Mental Health Counseling at Nova Southeastern University; Vonda Reyes Roath ('91),

Counselor at Children's Corner in Tampa; Kim Winkler ('92), classroom director at Beach Park Montessori School; Sabrina Burton ('93) Director of Religious Education at Saint Thomas Aquinas Church; Traci Raulerson ('93), graduate student in counseling psychology at U.S.F. and part-time respite worker at the Mendez School for Severely Emotionally Disabled Children; and Lynn Santiago ('93) also a graduate student in Mental Health counseling at Nova Southeastern University and part-time worker at the Hernando-Pasco Hospice. Current psychology majors learned much about the value of the internship program in securing a position after graduation and about the "real world" of jobs and graduate school.

Besides bringing guest speakers to campus, the Psychology Club helped organize three tours. The first was a tour of the library provided by Sr. Dorothy Neuhofer, O.S.B., who demonstrated the "easy way" to access psychology-related resources when term papers come due. Next, the Club sponsored rides to the Guardian Ad Litem open house in Dade City. The Guardian Ad Litem program offers assistance to young children involved in the court system by providing trained volunteers to assist these children cope with the stresses they must endure during this oftentimes prolonged process. In March, the Club organized a tour of Charter Mental Hospital in Tampa so that club members could get a first-hand look at how such an institution operates on a day-to-day basis.

The Club earned most of its own money for these activities through a bake sale in February and a car wash in October. The Club wishes to thank the students, staff, and faculty who supported them during these efforts. However, Dr. Rich Bryan, moderator of the Club for the past 13 years, still wonders how he ended up washing his own cars (as well as others) and paying for the privilege at the same time.

The Club also wishes to thank the Saint Leo Student Leadership Coalition for providing partial funding for some activities. They also want to thank Campus Ministry for providing the Community Lounge which served the Club as a meeting room throughout the year.

Finally, to set the record straight, and to let others know that the Club is *not* "all work and no play," the Club held two end-of-semester parties. The "Christmas Party" was held at Broadstreet Pizza in Masaryktown, while the Spring Barbecue was held behind McDonald Center. Both parties presented an opportunity for students and faculty to "let their hair down" and get to know each other better on an informal basis. They also provided some time for "brainstorming" about what the Club would do next.

This year the Club hopes to apply for status as a Chapter of Psi Chi, the National Honor Society in Psychology. The Club and its functions are open to all, not just psychology majors. Interested students can obtain information about joining the Club by calling Dr. Bryan (8418) or Dr. Cronin (8285).

The *Monarch* Staff would like to welcome the parents to Saint Leo College's Renaissance Fair. Enjoy!

Welcome to the first issue of what I expect to be unequivocally the best *MONARCH* year of this decade; this may also be the paper's *last* publishing year. This potential termination is, of course, of a certain importance to me, as the editor-in-chief and a staunch supporter of this media as an expression of the students' voice. Later in this passage, I will come back to this, maybe even write an obituary to my "baby." As I know that the average reader won't read that far into an article (except on the sports page), I will make my point.

Saint Leo College, as of Fall 1996, is missing something that is vital in every growing college community; it lacks the expression of *DISSENTING* opinions. The best explanation is an example: RHA (Residential Hall Association) in the Fall of 1994 was launching a controversial campaign. The issue (for curiosity sake, not of importance to my illustration) was allowing twenty-four hour visitation privileges in certain residence halls. Successful advocates of this same issue at the University of South Florida offered their voices of experience and reason to Saint Leo's half dozen dynamic [as in not static] students. Surveys of the residential halls' student revealed this issue as a top priority, so RHA, the students' voice in Residential Life, addressed the issue with a plan of action. This included: a 60's style, peaceful, sit-it protest in the Cam-

pus Mall between Saint Frances and Saint Edward's Hall; a memo to the administration as to points of concern of the on-campus students; and an informed delegation of student leaders who would gain audience with those policy-makers. This is the voice of *DISSENTING* opinion.

The response to early "probing" of Administration on this issue brought a swift, fatal blow to the organizing protest; its tone seemed to be that Saint Leo was a Christian school and that twenty-four visitation was a moral issue. Saint Leo was set up as a school catering to the parents of students rather than the students themselves. Even with reasonable arguments to Administration's points, the RHA delegation gave in to the issue completely. Administration's response to this *DISSENTING* opinion showed its unwillingness to support the students' right (how I hate that word!) to disagree openly with it; it also showed how weak the core of the student protest was on the Saint Leo College campus.

Nothing has changed except, perhaps, that now you, the students, have an editor of your student-run newspaper (for however long I will be allowed to retain that position) who is willing to openly encourage Administration to value student opinion. They can show this by viewing peaceful and organized student protest about common concerns as good and healthy to the life of the college community. The student

body has too long been playing the obedient child to its despotic parent. My goals are to encourage the student body to take responsibility for itself, to no longer need the Administration to parent it, and to encourage Administration to give the student body a chance to do just that.

This newspaper, our newspaper, may only be a shift of numbers on a spreadsheet to some, but its importance for me is far more, and it can be for you, as well. This is my official announcement of the *MONARCH*'s future acceptance of **legitimate, tasteful letters-to-the-editor on student concerns**. We do require names with the articles but will not print them in certain circumstances.

If the *MONARCH* is no longer in print next semester or next year, I'd like to be able to say that, through us, the student body had a voice.

Sylvia E. Torres, editor-in-chief

You take it for granted
I guess that's what it's for
But before you demand it
Take a look out your back door

If you don't like a single thing that I'm
saying
If you're offended when I demonstrate
Don't mean a damn to me and I shall
continue
Hope you won't mind if I control my fate

-Blues Traveler, Freedom

AMYSTICAL FEELING BEFALLS SAINT LEO

Submitted by: Terrence Dowdel

Come with us on a journey through time to a place where there are castles and jousts, kings and knights, lords and ladies, dungeons and dragons, magic and sorcery. On October 11, 12, and 13 (Friday, Saturday, and Sunday) in the year of Our Lord 1996, Leoland travels back to medieval times. The campus will be bustling with nobles, peasants, storytellers, jesters, swordsmen, and even ponies. There will be all sorts of booths with beautiful baubles to buy. There will also be films and feasts and all sorts of fanciful things to do and see.

On Friday the festivities begin at 1 pm with scenes from Shakespeare, story telling, films about the Renaissance Age, food,

and an evening bonfire. Beginning at 9 am on Saturday there will be children's events [shield-making, crown-making, etc.], lunches, contests, and even a dunking booth. The festivities will end on Saturday with a royal-medieval banquet at 6 pm. On Sunday all are invited to mass at the Abbey Church starting at 11:15 am, followed by brunch. Check-in will be held from 1 - 5 pm Friday afternoon, and again from 9 am - 3 pm on Saturday. All are welcome to join in the festivities, including peasants! So come on out to Leoland and experience the magic of Medieval times.

THE SAINT LEO BODY GRIEVES

Saint Leo College grieves the loss of Libby Tesar who died last summer. She had been a librarian at the college for thirty-three years. A memorial mass was held in her memory on Thursday, September 12 in the Abbey Church. There is presently a memorial fund been collected to purchase a plaque in her honor. Anyone interested in donating funds for this plaque can contact Cannon Memorial Library for information.

Former Saint Leo College professor Ralph S. Pendexter Jr., Ph.D. died Sunday, September 8, at his home in Dade City. A veteran of the United States Army/Air Force and World War II, he retired from the college as a foreign language and English instructor after thirty-five years. A daughter, Lynn Squires of Virginia Beach, VA; two grandchildren; and four great-grandchildren survive him. A memorial service was held at Saint Leo College on Saturday, September 14.

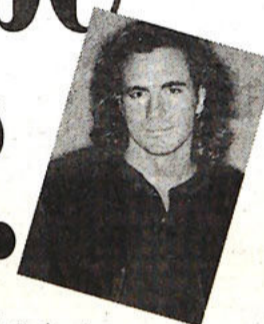
1996 -97 MONARCH STAFF

editor-in-chief Sylvia E. Torres
design editor Genele Firlik
sports editor Gerard Stone

assistant editor Mark Kane
advertising editor Dr. Stephen Baglione
advisor Dr. Mark Edmonds



Get this many soap stars together and there's bound to be an affair.



- **All My Children** Susan Lucci (Erica), John Callahan (Edmund), Mark Consuelos (Mateo), Eva La Rue (Maria), Kelly Ripa (Hayley), Walt Willey (Jackson)
- **General Hospital** Steve Burton (Jason), Lynn Herring (Lucy), Wallace Kurth (Ned), Vanessa Marcil (Brenda), Brad Maule (Dr. Tony Jones), Ingo Rademacher (Jax), John J. York (Mac), Sarah Brown (Carly)
- **One Life To Live** Kamar de los Reyes (Antonio), Christopher Douglas (Dylan), Thorsten Kaye (Patrick), Robin Strasser (Dorian), Kassie DePaiva (Blair), Nathan Fillion (Joey), Gina Tognoni (Kelly)
- **The City** Catherine Hickland (Tess), Randolph Mantooth (Alex), George Palermo (Tony), Jane Elliot (Tracey)

And what an affair it's going to be.

Here's the dish. The Disney-MGM Studios is hosting the most talked about affair in soap opera history. ABC Super Soap Weekend.

Twenty-five gorgeous stars. From four steamy ABC Daytime Dramas. Over two heart-throbbing days.

It's a meet-'em, quiz-'em, worship-'em weekend. With autographs. Photos. Bloopers. Trivia contests. Sets. Props. Costumes. Motorcades. Handprint ceremonies. The chance to star in a classic soap scene. And a Saturday night party with Sorcery in the Sky fireworks and a concert by General Hospital's *Eddie Maine & The Idle Rich*, plus Catherine Hickland and Kassie DePaiva. Come meet the stars of ABC Daytime Drama.

Just be careful who you're seen with. That's how rumors get started.

For Information Call the Super Soap Hotline: 407-397-6808

Saturday and Sunday, October 19 & 20.



**super soap
WEEKEND**

ONLY AT THE **Disney-MGM
STUDIOS**

COACH CONE WILL BE MISSED

Janet Cone has resigned as the head coach of the Saint Leo women's basketball team effective September 15, 1996, it was announced by Athletic Director Ted Owens. Cone leaves Saint Leo for the University of Samford to head its new women's basketball program. Samford University athletic director Steven Allgood has chosen Cone to be the school's first ever women's basketball coach. Cone will have a year to recruit and prepare, with the 1997-98 season being the first year of competition for the Division I Bulldogs.

Cone came to Saint Leo as basketball and volleyball coach in August of 1994, becoming the first full-time women's coach in either sport. After the 1994-95 season, she relinquished her duties as volleyball coach to concentrate on basketball. Cone has also been

an assistant athletic director overseeing women's athletics at Saint Leo for the past year. The basketball team recorded four SSC victories each season under Cone tying a school record for most conference wins. Owens will begin a national search immediately. Full-time assistant Becky Hays, in her first season at Saint Leo, will remain on the coaching staff. (see following article)

The Monarchs return all-conference guard Adrienne Holmes along with six other players from last season. Holmes led the team and was sixth in the SSC in scoring, averaging 15.2 points per game. Also returning is senior center Angel Marshall, who led the SSC in blocks (1.3 per game) as a junior. Five transfers, whom Cone recruited in the off-season, will join the squad this year along with four freshmen.

NETS HELD TRAINING CAMP AT S.L.C.

The New Jersey Nets held their 1996-97 pre-season camp at Saint Leo College from October 1 to October 11. It was announced by Saint Leo athletic director Ted Owens and the New Jersey Nets. The Saint Leo athletic department allowed the Nets the use of the Marion Bowman Activities Center facilities for their workouts.

The Nets' two-a-day workouts was closed to the public. They played a game on Thursday, October 10 for the public. The time of the game and ticket information was determined at a later date.

HANKS TAKES THE REINS FOR MEN'S BASKETBALL

Coach Mike Hanks steps into the position of head coach for the "Running Monarchs" this year, bringing with him an impressive combined record of 191-132. Hoping to turn our program around, Coach Hanks brings international and collegiate-level experience into "The Pit." Head coach of college and professional international teams since 1984, Hanks comes to Saint Leo with over a decade of coaching background.

From '94 to '96, Coach Hanks led the Manchester Giants of Manchester England to a 54-24 record, and prior to that, directed the Crocodiles of Caracas to a 46-27 record. His more eye-catching accomplishment though, was being graduate assistant coach at Indiana University when the Hoosiers

were National Champs under their flamboyant head coach, Bobby Knight, in 1976.

But Coach Hanks would not want this article to be just about him and his record. He believes the players deserve the attention. When asked what he hopes to accomplish at Saint Leo, he defers to his club and what they hope to achieve. He insists the team on the court should be the focus of any story, not the "Big Man" on the sidelines.

Never the less, Hanks will be the man holding the reins when the Monarchs play their first home game against Saint Petersburg A.A.U., November 12, at 7:30 pm in the "Pit." Welcome Coach Hanks and his boys back with total student body attendance and the pandemonium that visitors fear.

VOLLEYBALL FALLS TO ECKERD

The Saint Leo women's volleyball team opened up Sunshine State Conference play with a 3-1 loss at Eckerd College last Wednesday night. After taking the first game 15-10, the Monarchs dropped the final three 7-15, 7-15, 13-15. Freshman Stephanie Compton led the team with 18 kills, and four aces. Kristy Johnson recorded 12 kills and April Phelan had four blocks in the loss which dropped the team to 2-5 on the season.

April Phelan, a sophomore, currently leads the Sunshine State Conference in blocking, averaging 1.33 blocks per game. The 6-1 middle hitter has 31 blocks solo and 22 block assists. Stephanie Compton ranks fourth among the conference leaders in attacking with a hitting percentage of .298. The freshman also ranks fifth in

serving, averaging .48 service aces per game. Teammate Sheila Essig is just ahead of Compton with a .48 average.

Kristy Johnson, a freshman, is also among the SSC leaders in two categories. She ranks seventh in attacking with a .255 hitting percentage and is eleventh in blocking at .70 per game. The Monarchs currently lead the Sunshine State Conference in blocking averaging 2.58 blocks per game as a team this season. They have 66 solo blocks and 47 block assists for a team total of 103.

The team ranks second in the SSC in attacking, hitting .199 as a team.

NEW WOMEN'S BASKETBALL COACH

One of the last things Coach Cone did before she made the move to the University of Samford, was to pick Becky Hays to assist her and our Lady Monarchs. Hays comes to Saint Leo from the University of West Florida, in Pensacola, home of the Argonauts, where she was an assistant for two years, ('94 to '96).

Coach Hays brings to Saint Leo the mentality that aggressive defense is crucial for team success, and is therefore focusing on an "in-your-face" attitude under the net, and a fast-break mentality during the transition. Pressure defense, she believes, is central since it takes only one point to lose the game.

Yet beneath this tough, coaching exterior, is a woman committed to players as individuals. An obvious hand-picked disciple of Coach Cone, Coach Hays believes in fully developing her ladies into respectable adults. A passionate believer in her Christian faith, Hays brings inner conviction to the game, and wants her players to feel the same level of self-esteem.

Having directed international basketball clinics and camps in South America and South Africa through the organization called "Athletes in Action," Coach Hays wants her team to see there is more to life than basketball. By seeing the world's variety, yet its simple commonalities, Hays understands the importance of a player's internal development for the varieties of life after basketball.

"The best motivation is self-motivation," she said when asked about her coach/mentor philosophy, and, "Small things make the big things." This attitude she hopes to instill in the squad before their home opener with Russian Club Team on November 16, at 4 pm.

MONARCHS DEFEAT STETSON

The Saint Leo soccer team proved they could win on the road and did so in an impressive fashion, defeating Division I Stetson University 4-0 in Deland, FL this past Saturday. Sophomore Jon Akin continued to baffle opposing keepers scoring two goals and assisting on another. Akin put the Monarchs on the board in the 41st minute on a feed from Wayne Murtaugh.

Just two minutes later, senior Alfred Itaeli scored his second goal of the season on an assist from Todd Debolt to put the Monarchs up 2-0 just before the half. Akin went on to score on a penalty kick and assist on a Nomar Rodriguez goal in the second half as Saint Leo improved to 4-2 on the year. Junior keeper Steve Boyle made four saves as he recorded his second shutout of the season.



Coach Becky Hays
Photo by: Justin Godfrey

COMPETITIVE ANGLING

Submitted by: Benny Martinez

Many sports, such as golf, tennis, baseball, etc., share dual purposes according to the level of participation of those involved; recreational or team. Fishing is the recreational term for my sport, and angling competitively requires preparation and stamina as much as any other sport. Many tournaments are won in the final cast or, with the ability to keep fish alive throughout a tough tournament day.

As in most sports, persistence and dedication are essential to being the best. Many areas of angling success come from proper equipment, lure selection, and a knowledge of science. Tournament fishermen are constantly upgrading equipment, repairing equipment, and learning new types of equipment, so it is a financially demanding sport that can create many problems for the angler.

A tournament victory is very uplifting and financially rewarding, with two major types tournaments possible. Team tournaments are fished with a regular partner, while the other is a draw contest in which a boater is placed with a non-boater. They are paired up the night before, and more money is usually won in these draw tournaments. I have fished many

tournaments of both varieties, but team tournaments are my favorite, as I enjoy fishing with a buddy (especially when we win).

The closeness of a photo-finish, common in other competitions, can be found in this sport as well. An example is when my partner and I fished Lake Istapoga, near Sebring. All day we worked extremely hard just to keep the boat in position to cast efficiently. Then about two or three minutes prior to the finish of the contest, we stopped our boat within twenty yards of the "Off-Limits" area.

There was a grass island within sight of the weigh-in area, which is where competitors weigh their catches for the day. We dropped a plastic worm into the little island, and as I looked at the grass below the surface, a Bass 24 inches long bit my partner's lure. He set the hook and I frantically dipped the fish into the net. The staff and tournament field witnessed the whole thing, and when the final weigh-in was over, our catch was the largest at 9.8 lbs.

*Innocence is our natural state,
before it become covered over.
What covers it over is self-image.*

- Deepak Chopra

CHRISTI WADE STEPS UP TO THE PLATE

University of West Alabama graduate Christi Wade takes a swing at her first softball head coaching position here at Saint Leo. For two years Wade worked as an assistant coach at her alma mater, where she also played catcher for four years while working on her Bachelor's Degree in P.E. During the two years as an assistant, Coach Wade earned a Masters in Special Education, also at U.W.A.

Wade comes into Saint Leo's program with a big job in front of her, as several of last year's starters have graduated, Sheron Smith and Erika Germano to name a few. But Coach Wade has six returners from last season, some of whom are, Tracey Roy, Kelly Bowe, Crystal Dobbs, Julie Becker,

and Heather Martello, all seniors.

So Wade is not out of the woods yet, and has therefore recruited newcomers Lisa Milanes, a junior from Seminole Community College, and freshman Karen Nalette, a native of Kissimmee, Florida. Coach Wade has also picked up walk-on sophomore Regina Guerra formerly of Saint Leo's Volleyball squad.

With such a task, it is no wonder that she is still looking for players to sign on. If you, or anyone you know, wants to help Coach Wade and her club become a success, please get in touch with her at extension 8451. She is running conditioning exercises now, and official practices started September 23th, so dust off your glove and cleats.



Coach Christi Wade
Photo by: Justin Godfrey

BUDWEISER

6 PACK \$3.99
12 PACK \$6.99
SUITCASE \$13.99
MICHELOB 6 PK \$3.99

BUSCH

6 PACK \$2.99
12 PACK \$5.39
SUITCASE \$10.99

IMPORTS - 6 PACK

HEINEKEN \$5.99
BECKS \$5.99
CORONA \$5.99
SAMUEL ADAMS \$5.99
MOLSON ICE \$5.99

ICE BEER - 6 PACK

ICE HOUSE \$4.49
ZIMA \$4.49
MILLER HIGHLIFE 12PK \$5.39
MILWAUKEE BEST 12PK \$4.49

WE CASH PAYROLL CHECKS KWIK

KWIK MART
WE ACCEPT FOOD STAMPS
ALL PRICES VALID UNTIL OCT. 15TH 1996

PHONE 588-2001 • FORMER "MAJIK MARKET"

COKE OR PEPSI

6 PACK \$1.99
12 PACK \$2.99
2 LITER 99¢

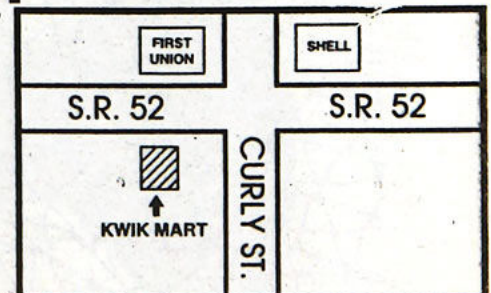
FREE DORITO

LARGE CHIPS
BUY ONE GET ONE FREE

QUARTS

MICKEY \$.99
BUD \$1.79
ICE HOUSE \$1.79
NATURAL LIGHT .. \$1.29
SCHLITZ BULL \$1.29

**GRAND
OPENING
SALE**



S.R. 52 & CURLY ST.

COUPON

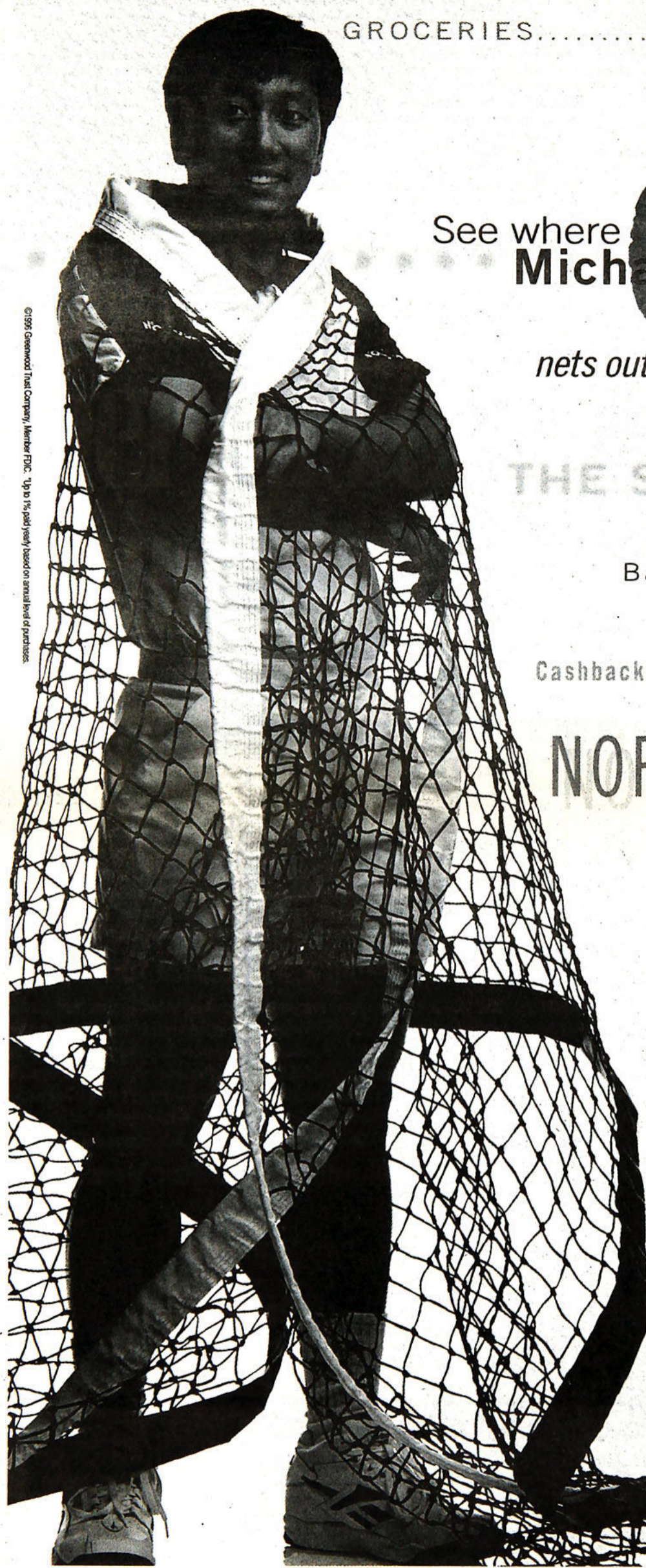
COUPON

\$1.25 SIX PACK PEPSI

EXPIRES OCT 15, 1996

49¢ BIG GULP

EXPIRES OCT 15, 1996



©1996 Greenwood Trust Company, Member FDIC. Up to 1% paid yearly based on annual level of purchases.

GROCERIES.....\$112

See where **Michael CHANG**

nets out when he makes a statement.

THE SHARPER IMAGE.....

Bass Pro Shops.....\$29

Cashback Bonus® award*

NORTHWEST
AIRLINES.....\$151...

ATM
Cash Advance



Apply for the Discover® Card and make a statement of your own. Call 1-800-IT PAYS TO.

it pays to



PARTY ?

Have you ever played a game called telephone? You know the one, where everyone gets in a line and the person in the front of the line states a sentence to the person standing next to him. Then, that person tells the person next to him, and on and on to the end of the line. Do you remember the result? Well, let me remind you, the story that you end up with is far from the story you started out with.

Recently we, the brothers of Pi Lambda Phi, have watched a story of this sort being played out on campus. The story told was concerning a get-together that we had off campus. We don't know what was said, or to whom, but the story that we heard the other day was far from the truth. Here is the story of what really happened the night of Friday, September 13th.

On the night of Friday, September 13, Pi Lambda Phi held a get-together for some friends. The get-together was closed party and only invited individuals were allowed to attend. The fraternity furnished hamburgers, hotdogs,

potato chips, salad fixings, sodas, and candy bars.

We followed our national fraternity's risk management policy by making it a BYOB function, and by not supplying alcoholic beverages. We took the keys from every driver at the door. If those drivers consumed one alcoholic beverage, they were not allowed to drive home. For safety's sake, we had one designated driver for every three person's in attendance.

Now that we have cleared the water, and everyone know what really occurred, we'd like to make a public outcry against the spreading of rumors. We say this not only out of personal interest, but also out of the interest of anyone who has had a story about him exaggerated to the point of disgust, but staff members or students. So, for future reference, if you hear a rumor, first consider the source, then check with the person or persons it concerns to verify the story.

Thank you,
The Brother of Pi Lambda Phi
(edited for spelling and typographical errors only)

WHO REALLY BURNS FOR THE PRICE OF PAPER?

The above quote is the title of a poem by Martin Espada, who presented some of his works to the students and faculty of Saint Leo College on Friday, September 20 in the Coffee House. Mr. Espada has published many volumes of poetry and currently teaches the art of creative writing at the University of Massachusetts.

The topic of Espada's poetry ranged from the corruption of Puerto Rico by corporate America, to a twisted love affair with a cockroach, to his emotions concerning his infant son's battle with pneumonia. His poems flowed like music and at times he could be seem moving his bidy in

time with the melody. A few poems were read in both English and Spanish, Mr Espada's second language, so the beauty of the language could be appreciated.

Before Mr. Espada became a full-time poet and teacher, he used poetry to subsidize his work as a civil rights lawyer. While a practicing attorney, he tackled many issues with the sole purpose of helping the common man. He worked especially hard to further the lives of those in his Latin American Community. Mr. Espada did this by convincing slum lords to bless their tenants with the basic privilege of heat, and by fighting for the rights of Spanish -speakers to freely practice their culture through

CLASSIFIED

Help Wanted:
Men/Women earn \$480 weekly assembling circuit boards/electronics at home. Experience unnecessary, will train. Immediate openings in your area. Call 1-520-680-7891 ext. C200.

Earn MONEY and FREE TRIPS promoting SPRING BREAK TRAVEL PACKAGES!! Call INTER-CAMPUS PROGRAMS at 1-800-327-6013 or <http://www.icpt.com>

AL'S PIZZA
Delivery or Take-out
11931 Curley Street
San Antonio
588-4422

Pizza - subs - salads - dinners - lasagna - ravioli - calzones - Stromboli - baked potatoes - ice cream - sundaes - shakes

* Inquire about daily specials

MANDARIN CHINESE RESTAURANT

GRAND OPENING SPECIAL OFFER

- * All you can eat Buffet \$4.50 (M-F 11:30 to 2:30)
- * Dine-in & take-out 20% off (expires December 14)
- * Serve small and large parties

Shrimp cocktail, spare ribs, chicken, sirloin steak, chicken steak, pork chops, and much more!!!

14937 Hwy 301
Dade City, FL
352-567-7988

Hours: 11:30 A.M. to 10:00 P.M.

Visa & MasterCard accepted



The Lake House KOREAN KARATE

MASTER INSTRUCTOR
Professional Black Belt Staff

Self-Confidence
Physical Fitness & Flexibility
Self-Defense & Personal Safety Skills
Agression Diffusion & Anger Control
Authentic Techniques & Tactics
Stress Management

Saint Leo College

Students Welcome

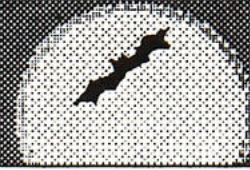
FREE START
PRIVILEGED STATUS

588-4885 [OR] 588-2958

MON-TUE-WED-THR pm-SAT am

Mom & Pop's DELI
Specializing in...
(352) 588-5280
Located at...
(Corner of Hwy. 52 & College Ave.)
P.O. Box 1247 • San Antonio, FL 33576

October 1996



S	M	T	W	T	F	S
		1	2	3 virtual reality in the cafe. at dinner time.	4	5 Band on the S.A.C. patio at 9:00pm
6 Busch Gardens \$8.00 meet at security at 10:00am.	7	8	9 Depression screening in the cafe at Lunch & Dinner.	10 Comedy in the S.A.C. at 9:00pm	11	12 Ren. Fair fall family weekend.
13 Ren. Fair fall family weekend.	14	15	16	17	18 Halloween Horror Nights \$10.00 depart at 6:00pm	19
20	21	22	23 Mocktails in Mar/Sny at 9:00pm co-sponsored by ΠΛΞ	24	25	26 Who's line is it? 1st prize= \$200.00 8:00pm in Mar/Sny
27	28 Halloween Gram sales by ΣΣΣ	29 Halloween Gram sales by ΣΣΣ	30 Halloween Grams sales by ΣΣΣ	31 Halloween Madness in Mar/Sny sponsored by ΠΛΞ		

