



MONARCH



ORIENTATION

Have we got plans for you!

Orientation for the 1992 fall semester promises to be both enjoyable and informative! Typically, students have thought of a thousand questions over the summer. The Orientation staff has lined up some great people to answer ALL of those questions.

During the time between Sept. 2 and Sept. 8, new students will have the opportunity to become familiar with the Saint Leo College campus, its facilities and its services. It certainly helps a student feel more at "home" to know his/her way around the cafeteria and his/her residence hall. By the end of our campus tours, every student will know the "ins and outs" of the campus. Academic advisement and registration procedures, as well as other important details, will also be presented during Orientation. After Orientation, a new student should begin his/her academic career with more confidence.

Freshmen

Orientation begins on Wednesday, Sept. 2, with registration at McDonald Center from 9 a.m.-3 p.m. You may check into your residence hall after you complete the registration process. Dinner will be served at 6 p.m. in McDonald Student Center Cafeteria. Your family is welcome to attend. Family meals will be \$8.50 per person, while your meal is covered by the College.

By 7:30 p.m., students will begin the REAL business of Orientation--information sessions and academic advisement.

At 9 p.m., there will be a residence hall meeting for all new students to discuss the rules and regulations of the dorms.

Transfers

Transfer Orientation is specifically designed to meet the concerns of transfer students. Your orientation begins on Monday, Sept. 7, with check-in from noon-3 p.m. Immediately following dinner, you'll meet with your Orientation Leader and begin planning for the registration process.

All new students

Once you have arrived on campus, you'll want to proceed directly to McDonald Center for Orientation Registration. You'll need to register for Orientation before you check into your residence hall. (In fact, you won't be allowed to check into your residence hall without proof of Orientation Registration.) Be sure to reserve time during your first day on campus to arrange for your campus Post Office box. If you plan to do your banking locally, you'll also want to arrange for that. There is a list of local banks in this issue of the Monarch for your convenience.

Orientation leaders will be on hand throughout the week to answer questions and give directions. Your first few days--Wednesday, Thursday and Friday--will be filled with campus life, orientation and academic advisement. Your Orientation Leader will be a very important person to you during this week.



Kevin Kennedy displays award-winning form in the synchronized swimming event during Greek Week. Monarch photo file



Student Government President Thimir Kaddouri Jr. rolls with the flow as he redecorates Roderick Hall. Monarch photo file

Weekend activities

By Friday evening, you will be whirling with information about campus life, so we've planned a relaxing weekend--a trip to Busch Gardens on Saturday and a pool party the Saint Leo way on Sunday. (Well, maybe we haven't planned a relaxing weekend, but it certainly will be fun!) You'll be able to purchase your Busch Gardens ticket during Orientation Registration. We'll take buses to Busch Gardens, so reserve your seat.

Labor Day, September 7

You'll probably want to rest on Labor Day from your exciting weekend and finish "settling in" your room.

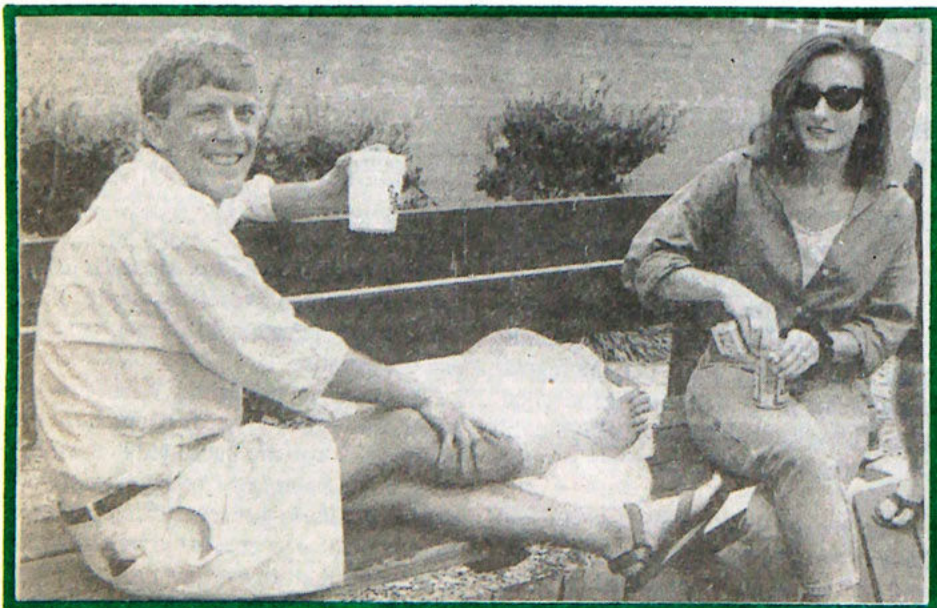
Upperclassmen and transfers arrive at the residence halls today. There will be a dance at 9 p.m. in the Cage.

Tuesday, September 8

Today is THE DAY! You'll register for classes in the east end of Crawford Hall. Don't worry! You'll be well prepared for registration after your academic advisement meetings with your mentor. You'll also see lots of friendly and familiar faces (the Orientation Leaders) during the registration process.

The beginnings

Wednesday, September 9, is the first day of classes of the Fall Semester.



CHILLIN' OUT

David Preller nurses a sprained ankle at a cookout on the deck behind McDonald Center during graduation weekend. Monarch photo file

Don't leave your parents at home

Parent's Orientation will begin at 2 p.m. on Wednesday Sept. 2. Taking full advantage of orientation requires a bit of schedule juggling. Parents will need to arrive on campus early enough to allow time for Orientation Registration and Residence Hall Check-In. Yes, that means allowing time to take everything out of the car which took a week to load!

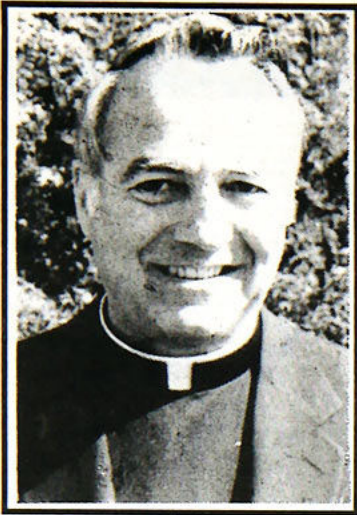
There will be a complimentary open buffet in McDonald Center Student Cafeteria from 11:30 a.m. until 1:30 p.m. The entire family is invited to enjoy the delicious buffet and a beautiful view of Lake Jovita in the cool comfort of the cafeteria.

Following lunch, parents can attend the workshop designed specifically to answer their questions and concerns about campus life at Saint Leo. Students are free to return to their rooms to start settling in. Students

are also welcome to procrastinate about unpacking and migrate from room to room meeting other students. If weather permits, the pool will also be available.

Parents and students are invited to attend The Wine and Cheese Reception at the Cage at 5 p.m., then the Welcome Dinner in McDonald Student Center Cafeteria at 6 p.m. Students' dinners have been covered by the Orientation fee; parents pay \$8.50 for tickets which can be purchased at Orientation Registration. Monsignor Mouch, president of the College, will offer welcoming remarks to the Class of 1996 following dinner.

Parents will want to plan on leaving campus following the Welcome Dinner. Students will begin their first academic orientation activities immediately after the dinner.



President's Corner

Dear New Students:

Welcome! While all students returning to campus lift the spirits of the faculty and staff, new enrollees are of particular interest. Freshmen arrive with all kinds of ideas and expectations, and likely with some fears. The fears we can and will work on quickly; they need not be a burden for long. Expectations take a little longer to realize, since they are more profound. Moreover, they are never met well if one looks to others—be they faculty, fellow students, coaches or the cafeteria—to make them come to fruition. The best and the most realistic expectations are the ones we realize ourselves, even if others help us.

The ideas we bring to a new situation are, or should be, the most exciting part of college life. What you come with is important, but what you leave with is even more important. That's what college life is all about, experiencing, through the educational process and the extracurricular activities, the modification of our thinking, of our sense of who we are, of our vision for the future. Some people call it maturing, others talk about becoming more realistic about the world, still others simply say growing.

I call it idea-crushing, the process of expressing our thinking, living by our thoughts, assimilating new ones and carefully observing that the resulting beginning "crunch" is what we want, even if the results are surprising. Everyone who opens himself/herself to that possibility will be surprised.

A final thought about this experience of maturing, growing or idea-crushing. This college, now over one hundred years old, has done its work well over the century, because it recognizes that one of the "ideas" in the mix of the college student's experience which is most productive of personal development is God. This is the reason for including courses in theology in the core curriculum. God is a powerful force in the history and present experience of all people, and we see ourselves best when we look at who we are in relation to God.

I wish all of our students success in the coming year. May you surprise the faculty and the staff with your brilliance and performance!

Sincerely in the Lord,

Monsignor Frank M. Mouch
President, Saint Leo College

Join the Monarch newspaper staff

The Monarch has paid positions available for the 1992-93 academic year. No experience required. For further information, call the Office of Public Affairs at x8253.

Look for the MONARCH on these dates:

- Friday, September 18
- Friday, October 2
- Friday, October 16
- Friday, October 30
- Friday, November 13
- Friday, December 4

MONARCH

Saint Edward Hall
Saint Leo College
(904) 588-8355

Editor:
Michelle G. Berens

Special Edition Editors:
Michelle G. Berens, Thomas Turcotte

This is a special edition of the Monarch.

The regular Monarch is a biweekly student publication. This special issue was created with the help of many people whose hard work brought this publication to you. We hope you enjoy reading this issue as much as we enjoyed bringing it to you. Special thanks must go to Carol A. Henn, Suzanne Renczkowski, Judith Rochelle, Jeanne Sundberg and Darrell Williams.

The opinions and stories expressed in the Monarch are not necessarily the views of the Editor or of Saint Leo College. We invite all old and new students to join the Monarch staff next semester. If you have any input into this publication, send it to: The Monarch, P.O. Drawer I, Saint Leo, FL 33574, or stop by the Monarch office located in the west wing of the second floor of St. Edward Hall.

Interest Inventory

Here are the activities you can become involved in at Saint Leo College:

Service Organizations

- Campus Ministry
- Circle K
- Golden Legend (yearbook)
- Knights of Columbus
- Monarch (newspaper)
- The Magazine (literary magazine)

Academic, Cultural & Professional Organizations

- American Marketing Association
- Amnesty International
- Army ROTC
- Battling Against Drunk Driving (BADD)
- Council for Exceptional Children
- Delta Epsilon National Honor Society
- Future Hoteliers of America
- International Food Service Executive Association
- Psychology Club
- Saint Leo College Ambassadors
- Saint Leo College Chorale
- Saint Leo College International Students Association (SLISA)
- Senior, Junior, Sophomore and Freshman Classes
- Sigma Tau Delta International English Honor Society
- Spirit Leaders

Greek Organizations

- Alpha Omicron Pi National Sorority
- Delta Epsilon
- Interfraternity Council
- Panhellenic Council
- Phi Kappa Sigma National Fraternity
- Phi Mu National Sorority
- Phi Sigma Sigma National Sorority
- Sigma Alpha Epsilon National Fraternity
- Sigma Phi Epsilon National Fraternity
- Sigma Sigma Sigma National Sorority
- Tau Kappa Epsilon National Fraternity
- Theta Phi Alpha National Sorority

Residence Hall Governments

- Henderson/Roderick/Benoit Hall Government
- Marmion/Snyder/Villa/Priory Hall Government

All-Campus Organizations

- Student Government Association (SGA)
- College Union Board (CUB)
- Black Student Union
- Union of Latino Students

MONARCH ready for new year

By Michelle G. Berens & Thomas Turcotte
Special Edition Editors

Dear New Students:

The Monarch welcomes you to Saint Leo College.

This paper is the special summer edition of the Monarch and, aside from the name, does not look very much like the regular editions that you will see during the school year. This special edition is to help you with orientation and to help you settle into college life.

The regular editions of the Monarch have evolved over the past few years into an award winning college paper. In the last decade, the American Scholastic Press Association awarded the Monarch first place among colleges with a population between 1000-1700 for the third year in a row.

The award showed the Monarch to be "an outstanding overall example of a scholastic publication in format, content and presentation."

To continue publishing a successful paper, the Monarch needs energetic staff members. If you are interested in contributing to the Saint Leo College newspaper and would like to join the staff, stop by the Monarch office located in the west wing of the second floor of St. Edward Hall. You may also call x8355 or x8253. Any student may join the Monarch staff at any time. All editorial positions are paid, and the Monarch also pays \$5 per published article.

AN IRREVERENT GUIDE

Language you can't live without



A. Academic Probation:
When your cumulative grade point average falls below a certain level. It's something you don't want to be on; check the catalog.

Academic Year:
Period includes fall and spring semesters.

Advising:
Process of giving information on academic requirements and advising students on individual requirements offered by various academic divisions. The process by which you learn that you won't be able to register for upper division courses without first completing your lower division requirements.

Audit:
Taking a course for no credit--for the fun of it!

All-Nighter:
When your documented essay is due tomorrow, and you have only your name written down.

B. Blue Book:
A little blue book with lots of blank pages you use to take an essay exam. This can be purchased at the Campus Store.

Bowl:
As in The Bowl. Grassy area located behind McDonald Student Center and bordered by Lake Jovita. It is a great place for bands to perform!

Burnout:
A state of mental and physical fatigue brought on by an all-nighter, combined with the most difficult exam you've ever taken.

C. Cage:
As in The Cage. Area in the lower level of McDonald Student Center with the Snack Shack. Games and entertainment are offered here almost every Wednesday night.

Care Package:
Cookies your mother sends that your roommate eats.

Circle:
As in The Circle. Round, grassy area in the middle of the parking lot outside Benoit, Roderick and Henderson Halls. It's a great place to throw a frisbee and to park your car if you want to get towed.

Class:
Regularly scheduled meeting of an academic course. Unfortunately, attendance is not an option. To pass a class, you must show up.

CLAST:
College Level Academic Skills Test--All Sophomores take this test during their second semester. You must pass it to graduate.

College Union Board:
A student-run programming board responsible for planning campus entertainment. A group of very fun people.

Counseling:
Whether you have just broken up with your boyfriend/girlfriend or don't know what you want to do with your life, check out the counseling services.

Credit Hour:
The unit of credit is a semester hour defined as 50 minutes of class time. An average class load per semester would be 15 hours (or about five classes).

Cum GPA:
Grade Point Average--A cumulative average of all the grades received from courses taken.

Curriculum:
A specific set of courses required to achieve a degree.

D. Daily Say-So:
Daily publication from the Student Activities office that lists scheduled meetings and activities. It is posted on the walls of administrative and academic buildings. It's official graffiti! You can also catch it on WSLC, channel 57.

Degree:
The title given as official recognition of completion of a curriculum. A Bachelor's degree is usually what you achieve first.

Drop-Add:
Process by which you can change your schedule free of charge. Last day to add a course is Sept. 11. Last day to drop a course without a \$10 charge is also Sept. 11.

E. Elective:
A course you can take that isn't required by your curriculum.

F. Final Exam:
Test given at the end of a course, usually covering all the material taught during the course. This one usually makes or breaks you.

Freshman Exit Exam:
A test you must take during your second semester as a freshman. You must pass it to become a sophomore.

G. Graduation:
Something that seems to take so long to get here but always comes too soon.

Greeks:
Persons who belong to a fraternity or sorority named with Greek letters.

H. Highlighter:
The reason your used class books have all those yellow lines through them.

I. IFC:
Inter-Fraternity Council, the governing body for fraternities on campus.

Intramurals:
Recreational sporting competition open to all students. The office is in the Marion Bowman Activities Center.

K. Kent Chapel:
The regular location of Campus Ministry Mass, located immediately outside the McDonald Cafeteria entrance.

L. Leadership '92:
A select group of freshman and sophomores who participate in a seminar for emerging leaders.

M. Major:
The field of academic study you might change at least seven times during your college career.

Mall:
Long, grassy strip between Saint Francis Hall and Saint Edward Hall.

Midnight Munchies:
A highly contagious collegiate disease which usually strikes after "Late Night with David Letterman." It is the leading cause of the "freshmen ten."

Midterms:
A period in the semester when your stress level increases immensely.

Minor:
The field of second academic emphasis or someone who can't get into bars.

Monarch:
Student newspaper at SLC. Look for it at newsstands on campus!

P. Panhellenic Council:
The governing body for sororities on campus.

S. Saint Leo College Ambassadors:
A select group that serves as the official hosts and hostesses of the College.

SGA:
The Student Government Association is the student governing body that helps shape decisions affecting your campus life. SGA is a great way to get involved!

Syllabus:
Schedule of homework and reading assignments for a class.

T. TBA:
(It's not a building.) This abbreviation usually indicates a class or its location that is "To Be Announced."

Transcript:
A summary document of your college academic course work and performance. That is to a job interview what a criminal record is to a parole board.

Tuition:
Monies required to register for classes.






SRD Automotive

On Campus Repair

Free Towing on Campus

- ▲ Major and Minor Repairs
- ▲ General Maintenance
- ▲ Mufflers and Exhaust Systems
- ▲ Oil Change - \$16.95

Brake Work

Oil Changes

Tune Ups

\$5 Service Call on Campus

8 a.m. - 5 p.m.

Monday - Friday

(904) 588-3291



NOT A SHY ONE IN THE BUNCH! Meet your leaders



The Orientation Staff for fall 1992 is comprised of sophomores, juniors and seniors. They've been chosen as Orientation Leaders, because each is excited about helping you get off to the right start in college life!

Your Orientation Leader will send a postcard to your home address before Orientation begins. You can match his/her name from the postcard with his/her picture in this paper, then you'll be sure to recognize your Orientation Leader. Of course, he/she will be on the lookout for you, too. (Hint: The Orientation Leaders all avow that they are much prettier than their mug shots portray them to be. Wait and see!)



Adam S. Albright is a senior human resources administration major from Saint Petersburg, Florida. He is a member of Sigma Alpha Epsilon and the Student Government Association.



Rosemarie Alfaro is a sophomore biology major from Miami, Florida. She is a member of Circle K and the Spirit Club.



Cindy Arsenault is a sophomore elementary education major from Naples, Florida. She is a member of the Spirit Club and Circle K.



Amy "Birdo" Barlow is a senior social work major from Chatham, New Jersey. She is a member of Sigma Sigma Sigma Sorority and a participant in the Big Sister/Little Sister Program.



Nick D. Balsiteri is a sophomore pre-med major from Tuxedo, New York. He is a member of Sigma Alpha Epsilon Fraternity and plays on the basketball team.



Michael Brewer is a junior accounting major from Tolland, Connecticut. He plays on the basketball team and is a member of Sigma Alpha Epsilon Fraternity.



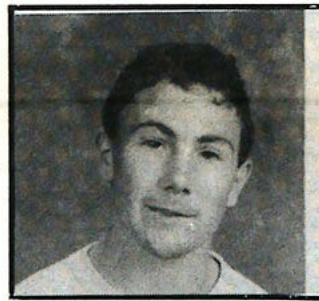
Julianne Brown is a junior social work/sociology major from Medford Lakes, New Jersey. She is the Vice President of Theta Phi Alpha Sorority and a member of STAR.



Erin Connor is a senior pre-law/political science major from Arlington, Virginia. She is the vice president of Phi Sigma Sigma Sorority and participants in intramural sports.



Julie Henderson is a senior pre-law major from West Palm Beach, Florida. She is a member of Sigma Sigma Sigma Sorority and the Environmental Committee.



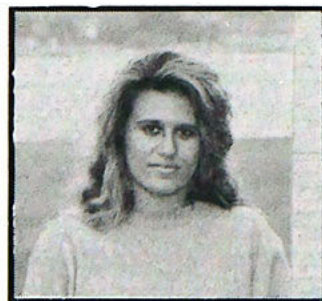
Chris Hinckley is a senior psychology major from Lake City, Florida. He is a member of the College Union Board and vice president of Sigma Phi Epsilon Fraternity.



Pamela Kelly is a junior Biology Major from Largo, Florida. She is a member of Sigma Sigma Sigma Sorority.



Joy Kirkland is a senior hotel/restaurant major from Tampa, Florida. She is vice-president of Alpha Omicron Pi Sorority and an SGA senator.



Lisa Mangano is a senior psychology major from Lakewood, New Jersey. She is a member of Sigma Sigma Sigma Sorority and BADD.



Maria Pia Navarro is a senior business administration major from Elmhurst, New York. She is a member of Sigma Sigma Sigma Sorority and the hotel/restaurant club.



Mindy Parworth is a junior art major from Two Rivers, Wisconsin. She is a member of Sigma Sigma Sigma Sorority and the Art Club.



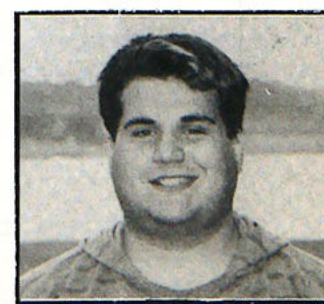
Nicole Renna is a sophomore liberal arts major from Orlando, Florida. She is a member of Theta Phi Alpha Sorority.



Becky Rodriguez is a junior criminology major from Lutz, Florida. She is a member of Sigma Sigma Sigma Sorority and Panhellenic.



Sean Saunders is a junior business management major from Fort Lauderdale, Florida. He is a member of Sigma Alpha Epsilon Fraternity and sits on the Executive Board of I.F.C.



Peter J. Smith is a sophomore English Education Major from Seaside Heights, New Jersey. He is a member of Campus Ministry.



Dionne Swart is a junior hotel/restauration major from San Antonio, Florida. She is Captain of the Cheerleaders and the Treasurer of Sigma Sigma Sigma Sorority.



Amy Van Dewater is a senior elementary education major from Ramsey, New Jersey. She is a member of Alpha Omicron Pi Sorority.



Nadia Vanteffelen is a junior hotel/restaurant management major from Rochester, New York. She is a member of Sigma Sigma Sigma sorority and the tennis and volleyball teams.



Stacy L. Voras is a senior elementary and special education major from Chicago, Illinois. She is the president of Sigma Sigma Sigma Sorority and a Saint Leo College Ambassador.



Laurie Zimmerman is a senior sports management major from New Jersey. She is president of Alpha Omicron Pi Sorority and a cheerleader.

Not pictured

Wendy M. Artale is a senior accounting major from Sanibel Island, Florida. She is a member of Sigma Sigma Sigma Sorority and a Tau Kappa Epsilon Fraternity little sister.

Board of Governors

The 1992 Orientation Board of Governors planned the Orientation schedule with you in mind. Selected last fall by the '91 Orientation Staff, the Governors have helped train the '92 Orientation Staff. They want to hear your compliments and complaints about our program. Be sure to look for them during Orientation Check-In! They are THE BEST! We are sure you will agree with us.

Becky Buller is a junior elementary education major from Warner Robins, Georgia. Becky is the president of Circle K International, the vice president of the Student Government Association and a member of the Board of Trustees.

Kelly Fortune is a senior hotel/restaurant management major from Ashtabula, Ohio. She is a member of the volleyball team and Sigma Sigma Sigma Sorority and a Saint Leo College Ambassador.

Sheila Holland is a senior finance and accounting major from Miami Shores, Florida. She is the treasurer for both Alpha Omicron Pi Sorority and Panhellenic. In addition, she is a member of Delta Epsilon National Honor Society.

Thimir A. Kaddouri Jr. is a junior pre-med major from Monroe, Connecticut. He is president of the Student Government Association, president of the Student Team of Admission Recruiters (STAR) and vice president of Sigma Alpha Epsilon.

Mark Segreto is a senior hotel/restaurant management major from West Islip, New York. He is the President of Sigma Alpha Epsilon Fraternity and a Big Brother to Sigma Sigma Sigma Sorority.

Ginger Sheehy is a junior hotel/restaurant management major from Brandywine, Maryland. She is a member of Sigma Sigma Sigma Sorority and the secretary of the College Union Board.

Jeff Winters is a junior marketing major from Redding, Connecticut. He is a member of Sigma Alpha Epsilon and sits on the Student Government Association Executive Board.



Danny Cedeno is a junior criminology major from Lakewood, New Jersey. He is a member of Sigma Phi Epsilon Fraternity and BADD.

Academic Calendar for 1992 Fall Semester

New students arrive	Wed., Sept. 2
Returning students arrive	Mon., Sept. 7
Registration: All full-time students	Tues., Sept. 8
Classes begin	Wed., Sept. 9
Last day to drop/add courses without fee	Fri., Sept. 11
Opening Convocation	Mon., Sept. 14
Midsemester Grades issued	Thurs., Oct. 22
Last day to withdraw from courses without course failure	Fri., Oct. 30
Preregistration/Advising for Spring semester begins ...	Wed., Nov. 4
Thanksgiving Holiday	Wed. - Fri., Nov. 25 - 27
Preregistration for Spring semester ends	Fri., Dec. 4
Last day to withdraw from college without failure.....	Wed., Dec. 9
Last day to remove incomplete grades	Fri., Dec. 11
Last day of classes	Fri., Dec. 11
Final exams	Mon. - Wed., Dec. 14 - 16
Residence Halls close at 11 a.m.	Thurs., Dec. 17

Saint Leo College 1992 Fall Festival Weekend October 24-25

What is the Saint Leo College Fall Festival Weekend?

"Hey Guys and Dolls, hold on to your bobby socks as you prepare to travel back in time during Saint Leo College's 'At the Hop' Fall Festival Weekend Celebration, October 23-25, 1992."

This weekend will be filled with hit after hit as students, family, faculty and staff join together to welcome back alumni and good old fashioned rock n' roll.

If you haven't guessed yet, the weekend will be centered around a 50's theme.

Nothing but excitement awaits you as you twist and shout to a theater production, watch your son or daughter perform in the talent show or participate yourself and climax the weekend with the Presidential Sock Hop! There are so many things to do during the weekend that they are too numerous to mention all.

The 1992 Fall Festival Weekend Committee invites you to break out your leather jackets, chinos, poodle skirts and saddle oxfords and join us during this incredible trip down memory lane!

The 1992 Fall Festival Weekend Committee hopes you and your families will

join us during this magical and mystical weekend.

If you are interested in joining this committee, or have any questions concerning the Weekend, please ask for Tammy at 8266.

Detailed information will be mailed to parents at the beginning of the Fall '92 semester.

Sincerely yours,

Brian Stuber

Brian Stuber
Fall Festival Weekend Chairperson



Inquiring minds want to know

Dear Orientation Leader,

What are the hours for the Snack Shack in McDonald Student Center?

—Signed: Marvin Munchie

Dear Marvin,

The Snack Shack has lots of tasty items for your "snack attacks." The Snack Shack, located in the basement of McDonald Student Center, is open from 7:15 a.m. to 9 p.m., Monday through Friday. The hours are 11 a.m. to 6 p.m., Saturday and Sunday. The Food Service Department is open for requests concerning the Snack Shack and can be reached at x8421.

Dear Orientation Leader,

Where can I find information about getting a job? What types of jobs are available on campus?

—Signed: Wanna Job

Dear Wanna Job,

The first stop for an on-campus job is at the Financial Aid Office. Most campus jobs are based on financial need and are part of the College Work Study Program, which is partially funded by the federal government. But, if you want to work, find out the possibilities and restrictions from the Financial Aid Office and the Career Center, both located in Saint Edward Hall.

Dear Orientation Leader,

I understand that I can drop and add classes. What are the important dates and other information to keep in mind?

—Signed: Full-Time Student

Dear Full-Time Student,

There are some important facts and dates to consider if you intend to drop or add classes. The last day to add classes for Fall 1992 is Friday, Sept. 11. This is also the last day to drop classes without being charged a \$10 fee.

The last day to drop a class without failure is Thursday, Oct. 31. If you drop a class, please be aware of the consequences. Students who drop below 12 hours will not be full-time students. Full-time students who do this may lose their eligibility for financial aid and may not be eligible to live in the residence halls.

Dear Orientation Leader,

Is there anything to do at Saint Leo at night or on the weekend?

—Signed: Suzie Socialite

Dear Suzie,

You betcha! The College Union Board plans an average of one event per week, clubs and organizations usually plan one. Couple this with all the sports events and club meetings and you will have to budget your time so you can study.

Dear Orientation Leader,

Do the instructors really spend time with the students?

—Signed: Shy and Timid

Dear Shy and Timid,

Yes! Yes! Yes! The instructors at Saint Leo have a commitment to students, and the philosophy of our school is very people-oriented. You will find that all the students appreciate the dedication of the staff.

Dear Orientation Leader,

When is the pool open during the academic year?

—Signed: Mark Spitz

Dear Mark,

You still do keep in shape after winning all those Olympic gold medals, don't you? The schedule for the pool is noon to 7 p.m. Monday through Friday and 11 a.m. to 6 p.m. on Saturday and Sunday.

Dear Orientation Leader,

I am a transfer student. May I pledge a Greek Organization my first semester?

—Signed Jimmy the Greek

Dear Jimmy the Greek,

Transfer students may pledge if they have at least 12 transferable credits and a grade point average of at least 2.25. First semester freshman or transfers with less than 12 credits are not eligible to pledge a social Greek organization.

**EXTRA!
EXTRA!
EXTRA!**

Parents, you can read all about it by getting a full year's subscription to the College's student newspaper.

Just send \$20 to

**The MONARCH
P.O. Drawer I
Saint Leo, FL 33574**

Important numbers to know

General Campus Information	(904) 588-8200
President's Office	8242
Academic Affairs	8244
Admissions Office	8283
Athletics	8221
The Cannon Memorial Library	8258
Center for Distance Learning	8203
Financial Aid	8270
Institutional Advancement	8250
Monarch	8355
Orientation	8358
Registrar	8233/8235
Security	8432
Student Activities	8358
Student Affairs	8266



St. Petersburg Times Columnist Peggy Peterman was the guest speaker at a writer's gathering on campus last semester.

Monarch photo file

Student Government Association

SGA's missing ingredient

If you think that you can't get involved, you're wrong! The Student Government Association (SGA) is a perfect way to start. Although you may think that the SGA is just around to pass legislation, this is not the case. While fulfilling this obligation, we also play an intricate part in almost every campus activity from Fall Festival Weekend to Earth Day.

Since the Student Government Association is only as strong as its students, there are a variety of ways in which concerns and opinions may be voiced. Probably the most viable of these avenues is the Student Senate. The Senate is composed of representatives from all campus organizations and, through deliberation, serves as the backbone of campus life.

Another misconception about the SGA is that it is only open to members of campus

organizations. The Student Government Association committee structure is open to all students.

Because of the small size of the Saint Leo College campus, it is nearly impossible to remain uninvolved. The Saint Leo Student Government Association is a great way to begin this involvement. If you have any questions, don't hesitate to contact one of us. We are looking forward to a great year and hope you can be a part of it!!! Remember: Being involved in campus activities is not only fun and exciting, it is an honor.

Thamir Kaddouri Jr.	President
Becky Buller	Vice President
Jeff Winters	Treasurer
Renaé Nowicki	Secretary



WATER-PROOFING

Cassandra Grieshop and Carlos Santiago practice water-proofing during ROTC training recently at the College swimming pool. Monarch photo file

\$\$Dollars and sense

If you wish to open a checking account, these local banks are available:

First Union Bank, Hwy 52, San Antonio (within walking distance)
Lobby Hours: M-Th 9 a.m.-4 p.m. Fri 9 a.m.-6 p.m.

NCNB, 501 E. Church Street, Dade City
Lobby Hours: M-Th 9 a.m.-4 p.m. Fri 9 a.m.-6 p.m.

Sun Bank, 700 S. 7th St., Dade City
Lobby hours: M-Th 9 a.m.-4 p.m. Fri 9 a.m.-6 p.m.

First National Bank of the South, 303 S. 8th St., Dade City
Lobby Hours: M-Th 9 a.m.-4 p.m. Fri 9 a.m.-6 p.m.

You'll need a local mailing address before you can open a checking account. Most banks also require a picture I.D. with a signature. Post Office boxes are available from the U.S. Postal Service (located on campus) when you arrive. All students are required to rent a box.

The cashier's window of the Business Office, located on the second floor of Saint Francis Hall, is open from 1 p.m. to 4 p.m., Monday through Thursday. It is open from 1 p.m. to 5 p.m., Friday and on pay days. Pay days are the 15th day of the month and the last day of the month).

Your Freshman mentor

You will journey through the first semester at Saint Leo College with the help of your academic mentor.

All entering freshmen are assigned a mentor. A mentor is a faculty member or administrator who can help ease the way and guide and direct you. Your mentor can help you interpret the things you will be experiencing as a new college student.

You will spend three separate sessions during orientation with your freshman mentor learning about the courses you will take and college policies and procedures such as registration, adding classes and dropping classes. You will also examine the purpose of higher education and your

place in it.

During the semester, your mentor will continue meeting with you in a one credit course, Seminar on Self-Awareness, which is required of all freshman. In this seminar, you will have an opportunity to deal with problems you may encounter, build your communication skills and participate in group discussions on what you can expect to get out of your college years and what you will be expected to put into them.

By the end of the semester, you will understand your place in our college community and how to work within it to attain your academic and personal goals.

A greeting from the Vice President for Student Affairs

Greetings!

We welcome you to Saint Leo College!

Our hope is that these years at Saint Leo College will be fantastic for you. How you spend them is primarily up to you. There are many people here to help you, many options from which to choose—but you are the one most responsible for your growth. Take that as a challenge.

We encourage you to participate in the activities held on campus; join a club or an organization which will help you discover your leadership qualities and get to know a group of people. Campus Ministry, an organization open to persons of every faith, is a great way to become involved in service projects on and off campus and to meet wonderful people. One can also become involved in the spiritual aspect of campus ministry. All are invited to participate.

Take advantage of all the offices of Student Affairs: Career Center, Counseling Center, Health Center, Student Activities, and if you live on campus, Residential Life.

College can be a learning and growing experience if you work to make it so. It won't just happen.

Here's to you! May these four years be a wonderful time of learning. Stop in anytime.

Sincerely,

Sister Geraldine Warthling, O.S.F.
Vice President for Student Affairs

Student Affairs Staff:

Career Center
Counseling Center
Health Center
Student Activities
Area Coordinators of Residential Life
Director of Campus Ministry

Reneé Borns
TBA
Bobbi Sponheim, L.P.N.
Cindy Lawson
Mary Lutz and Susan Mull
Fr. Francis Lonsway

WANTED:

Cartoonists
Columnists
Editorialists
Photo Editor
Sports Editor
Staff Writers

Call x8253

✈ Flying in?

New students flying into Tampa International Airport for Freshmen Orientation need to return the Transportation Reply Card in this packet. Saint Leo College vans will be leaving the blue area of the airport at 9:30 a.m. and noon on Wed., Sept. 2 for freshmen. There is a \$20 charge. If you have misplaced your Transportation Reply Card, please call (904) 588-8358 to reserve your place on a van. Transfer students need to return their card as well. However, their pick up times are on Mon. Sept 7 at noon and 3 p.m. in the blue area.

Since travel in and out of Florida during December and January is quite heavy, students planning to fly home for the holidays should make their reservations as early as possible. The middle of September is not too early.

The departure date for Christmas vacation is determined by an individual's final examination schedule. The examinations are Dec. 14 - 16. We suggest that reservations be made for Dec. 17 before 11 a.m., as residence halls close at that time.

Again, the middle of September is not too early to make these reservations.

Home away from home

The Department of Residential Life welcomes you to Saint Leo College and to our campus community. In the coming months, you will have many new opportunities and will experience new environments, both in the classroom and in your residence hall. You will be challenged by the fact that you are expected to be responsible for yourself, and in the process of learning how to become a responsible young adult, you will learn much about yourself.

The staff members in the Department of Residential Life are available to help you answer questions that you will have about Saint Leo College, especially those about living in the residence halls. You may wonder why we keep referring to the "dormitories" as residence halls. We believe that there is a big difference between the "dorm" your parents lived in when they went to college and the place you will be living in at Saint Leo College. A true "dormitory" is a place where people sleep, and that's it. Typically, there was a house mother who kept a tight rein on her charges, and there were curfews for the female students. A residence hall is a place to live, laugh, study, sleep, learn and have fun. You will spend a lot of time in the residence halls here, and our staff is committed to providing opportunities for you to get the most out of this experience. The residence hall staff includes student staff members (Resident Assistants and Head Residents) hired to be leaders and community builders where they live and work. The student staff members work hard to build a sense of community on their floor or wing and in the residence hall as a whole through all kinds of social, educational and recreational activities.

Who's Who?

A Resident Assistant, RA for short, is a full-time student who lives on your floor. This person wants to work with other students and is trained to deal with all kinds of situations. Most importantly, your RA has expressed a strong interest in getting to know you and every other person on your floor. Other aspects of the RA position include building the floor community, being available for any emergencies and upholding and enforcing residence hall policies.

Long distance calling by authorization codes

Students who wish to establish an account to make long distance calls must complete an application for long distance service and return it to the Telephone Service Department, Saint Leo College, P.O. Box 2036, Saint Leo, FL 33574. Students may have their bills sent to their campus address or to their home address. Any bills sent home must have the application signed

A Head Resident is a full-time student responsible for an entire residence hall and for supervising the staff of RA's. The Head Residents are also very interested in getting to know all of their residents and will work with the staff of RA's to develop a sense of community in the residence hall.

Area Coordinators are full-time, professional staff members who live on campus and whose offices are in Saint Edward Hall in the Department of Residential Life. Responsible for the overall operation of several residence halls, the Area Coordinators work with students in a variety of ways. They are committed to the idea that living in the residence halls is an opportunity to learn and grow for residents and staff members alike.

There is a housekeeping staff who cleans the bathrooms and common areas of the residence halls. Maintenance workers are available for repairs in your residence hall room. They are an important part of your living environment; take some time to get to know each of them a bit.

What do I need to bring?

When planning what to bring, it is important to remember that you will be sharing a room with someone else. To avoid unnecessary duplication, it is a great idea to contact your roommate and decide who is to bring what (telephone, television, stereo, refrigerator, etc.). Some roommates talk about room decorations and personalization before they arrive, and from the way their rooms look, this isn't a bad idea.

Since a meal plan is required, and for safety reasons, the only cooking appliances permitted in your residence hall room are a small microwave oven, a coffee maker and a hot air popcorn popper. Any other cooking appliances, such as hot pots and toaster ovens, are not permissible.

Refrigerators up to 4.5 cubic feet are acceptable. Refrigerators 2.5 cubic feet may be rented on both the West and East sides of campus a few days after you check into your room.

Look for signs with the rental dates and times posted in your residence hall. Refrigerators are rented for an entire academic year. The cost is \$55 per year plus a \$10 deposit, which is payable by check only,

by a parent or a guardian.

Individual authorization codes will be issued to students who want to make long distance calls. This code will allow the students to make long distance calls from any campus telephone and to be billed individually. Each student will have his or her own code number. Applications will be mailed out during the summer.

please. The \$10 deposit is refunded after the refrigerator has been returned at the end of the academic year.

Definitely plan to bring your own linens and towels, since they are not provided. If you decide you would rather wait and purchase them when you arrive, your Orientation Leader or your RA will know where the best shopping is located!

As much as we love pets, they are not permitted in the residence halls of Saint Leo College. Tropical fish are fine depending on the tank size, but any other creatures, furry or not, are not permissible.

If I have a problem with my room, what do I do?

If there is a problem with your room when you arrive, such as an air conditioning unit not working or a light bulb not working, talk with your Resident Assistant. Maintenance problems will be referred to the maintenance staff who will attend to the request as soon as possible. If you have questions about the furnishings in your room, please talk with your Resident Assistant. He/she can give you information about the College's policies, but the best source is the Student Handbook.

Your roommate...

Your roommate is a unique person, just as you are a unique person, with special likes, dislikes, interests and abilities. Living with a roommate is probably going to be a new experience for you. A roommate is someone you can laugh and study with, ask advice from and even talk with about being homesick. You never know, he/she could be in the same boat!

As with any relationship, the most important part in getting to know and getting along with that person is good communication. Because people do not understand each other automatically, you will probably have to explain your expectations to your roommate, and he/she will likewise have to explain his/hers to you. Some topics you will want to discuss are study time and noise, privacy, borrowing clothes and other personal belongings, guests in the room and more. By talking through these and other important topics at the beginning of the semester, you will be able to compromise and develop a positive relationship with each other.

How do I talk to my roommate if we have a conflict?

The first person you need to talk with when you and your roommate disagree or have a difference of some sort is your roommate. Although you may be two very different kinds of people, most concerns and difficulties can be resolved by talking openly and honestly and by being willing to compromise. Living with someone who is different from you can be a challenging experience for both of you; however, focusing on your similarities and the different things you can teach each other is a healthy attitude to have. Not talking to your roommate only creates more tension and discomfort for both of you and is about the worst choice you can make.

If for some reason you and your roommate are not able to resolve your differences after talking and compromising, the next step is to talk with your RA. He/she will have an objective perspective and will be able to serve as an impartial resource for both of you.

Safety and security.. Your job, our job

The entrances and exits of the residence halls are locked 24 hours a day for your protection. Your safety is very important to us, and we need your cooperation to make the residence halls a safer place to

live. Propping exterior doors open may be convenient for you and your friends, but it jeopardizes residents in the building. It is equally important, even though we strive to develop a sense of community in your residence hall, that you keep your room door locked--even when you are just down the hall or asleep in your room. **Making the halls a safer place to live is not only our job, it is yours as well.**

What are the visitation hours for the residence halls?

Guests are to use telephones located outside entrances of residence halls to call the resident they wish to visit. The resident must meet the guest at the entrance; guests of the opposite gender must be escorted by the resident for the duration of the visit.

For residents of Marmion and Snyder Halls, all guests of the opposite gender must sign in at the Front Desk; both the resident and the guest must leave their respective ID cards with the receptionist at the Front Desk.

Visitation hours have been created and are upheld for the safety of the residents in the halls, as well as for the general well-being of the residence hall community. The hours provide more than enough time for visiting with friends, while allowing other residents the opportunity to study and sleep. See the Student Handbook for more information.

What if...?

Where can you do laundry? What are the bookstore hours? Your RA and the other RA's in your residence hall will know lots of answers to your questions. If they do not know an answer or are not sure, they are trained to find someone who does know the answer to your questions; so go ahead and ask!!!

How do I pick up packages sent to the College?

Residents of Marmion, Snyder and Villa Halls may claim their packages from the receptionist at the Front Desk of Marmion/Snyder from 8 a.m. to 3 p.m. only.

Residents of Henderson, Benoit and Roderick Halls may pick up their packages from the Secretary in the Department of Residential Life. During the first week of classes, packages may be picked up from 9 a.m. to 11:30 a.m. and from 1:30 p.m. to 4:30 p.m. in Saint Edward Hall.

Arrival

We are very excited about your arrival on campus. We will be working especially hard weeks before you arrive to get things ready for you. Knowing the weather in Florida, check-in day is bound to be hot and muggy. You may be moving your items up stairs, so dress comfortably!

The Orientation Schedule gives you plenty of time to unpack, so don't worry about getting it all done the first day. Spend some time getting to know your roommate, floormates, RA and Orientation Leader.

You will receive your room assignment sometime after mid-July. We will enclose your roommate's name and address, as well as other information, which you will find useful as you begin to pack. Please read it all carefully, then get ready for a great year!

See you in the halls!
Saint Leo College
Residential Life Staff

By the way, the Student Handbook is provided for each student at Saint Leo College. There is a special section about residence halls for students living on campus. We strongly suggest reading through the Student Handbook when you arrive so that you will be better acquainted with Saint Leo College.

Don's Towing and Auto Salvage

24 HOUR TOWING

Engines * Transmissions * Tires * Body Parts

Mechanic on Duty

4175 Pasco Road

San Antonio, FL 33576

(904) 588-3828

We accept Checks, VISA and MasterCard

OPEN 7 DAYS