



MONARCH

Special Edition

A Student Publication of Saint Leo College

July 1993

Inside This Edition . . .

Letter from the President ..	page 2
Orientation Leaders	pages 4-5
Flight Information	page 7
Residential Life	page 8

ORIENTATION

Have we got plans for you!

Orientation for the 1993 fall semester promises to be both enjoyable and informative! Typically, students have thought of a thousand questions over the summer. The Orientation staff has lined up some great people to answer ALL of these questions.

Between September 2-8, new students will have the opportunity to become familiar with the Saint Leo College campus, its facilities and its services. It certainly helps a student feel more at "home" to know his/her residence hall. By the end of our campus tours, every student will know the "ins and outs" of the campus. Academic advisement and registration procedures, as well as other important details, will also be presented during Orientation. After Orientation, a new student should begin his/her academic career with more confidence.

Freshmen and residential transfers

Orientation begins on Thursday, September 2, with registration at the McDonald Student Center from 9 a.m.-3 p.m. You may check into your residence hall after you complete the registration process. Dinner will be served at 5:30 p.m. in McDonald Student Center

Cafeteria. Your family is welcome to attend. Family meals will be \$8.50 per person, while your meal is covered by the orientation fee.

By 7 p.m., students and parents will begin the REAL business of Orientation-information sessions and academic advisement.

At 9:30 p.m., there will be a residence hall meeting for all new students to discuss the rules and regulations of the dorms.

All new students

Once you have arrived on campus, you'll want to proceed directly to the McDonald Student Center for Orientation Registration. You'll need to register for Orientation before you check into your residence hall. (In fact, you won't be allowed to check into your residence hall without proof of Orientation Registration.) Be sure to reserve time during your first day on campus to arrange for your campus Post Office box. If you plan to do your banking locally, you'll also want to arrange for that. There is a list of local banks in this issue of the Monarch for your convenience.

Orientation leaders will be on hand throughout the week to answer questions and give directions. Your first few days--Thursday, Friday and Saturday--will be filled with campus life, orientation and academic advisement. Your Orientation leader will be a very important person during this week.

Weekend Activities

By Saturday evening, your head will be spinning with information about campus life, so we've planned a fun Sunday--a trip to Busch Gardens. You'll be able to purchase your Busch Gardens ticket during Orientation Registration. We'll take buses to Busch Gardens, so reserve your seat.

Monday, September 6-Labor Day

Monday will be a Mountain Top Experience with Link Fuller. This experience will introduce you to the Power of Positive Self (POPS). Upperclassmen and transfer commuters arrive at the residence halls today. There will be a dance at 9 p.m. in the Cage.

Tuesday, September 7

Today is THE DAY! You'll register for classes in your advisor's office. Don't worry! You'll be well prepared for registration after your academic advisement meeting with your mentor. You'll also see lots of friendly and familiar faces (the Orientation Leaders) during the registration process.

The beginnings

Wednesday, September 8, is the first day of classes of the fall semester.

Don't leave your parents at home

Parent's Orientation will begin at 2 p.m. on Thursday, September 2. Taking full advantage of the Orientation requires a bit of schedule juggling. Parents will need to arrive on campus early enough to allow time for Orientation registration and residence hall check-in. Yes, that means allowing time to take everything out of the car which took a week to load!

There will be a complimentary buffet in McDonald Student Center Cafeteria from 11:30 a.m. - 1:30 p.m. The entire family is invited to enjoy the delicious buffet and a beautiful view of Lake Jovita in the cool comfort of the cafeteria.

Following lunch, parents can attend the workshop designed specifically to answer their questions and concerns about campus life at Saint Leo. Students are free to return to their rooms to start settling in. Students are also welcome to procrastinate about unpacking and migrate from room to room meeting other students. If weather permits, the pool will also be available.

Parents and students are invited to attend the Wine and Cheese Reception at the Cage at 5 p.m. followed by the

Welcome Dinner in McDonald Student Center Cafeteria at 5:30 p.m. Students' dinner have been covered by the Orientation fee, parents pay \$8.50 for tickets which can be purchased at Orientation registration.

After dinner at 7:30 in the gym, students are required and parents are invited to attend the Opening Ceremony. Monsignor Mouch, president of the College, will offer welcoming remarks to the class of '97. The orientation leaders will be introduced. Parents should plan on leaving after the introductions so that new student orientation can begin.

Join the Monarch staff

The Monarch has paid positions available for the 1993-94 academic year. No experience required. For further information, call the Office of Public Affairs at ext. 8253.



Campus Ministry

Father Mike O'Brien, assistant to the president for campus ministry, celebrates Mass at Kent Chapel. Students may also join the Samaritans, a service organization open to persons of every faith.

Academic Calendar for 1993 fall semester

New students arrive	Thurs., Sept. 2
Returning students arrive	Mon., Sept. 6
Registration: all full-time students	Tues., Sept. 7
Classes begin	Wed., Sept. 8
Opening Convocation	Tues., Sept. 14
Last day to drop/add courses without fee	Wed., Sept. 15
Midsemester grades issued	Thurs., Oct. 28
Last day to withdraw from courses without course failure (fee)	Thurs., Nov. 4
Preregistration/advising for spring semester begins	Fri., Nov. 5
Thanksgiving Holiday	Wed.-Fri., Nov. 24-26
Preregistration for spring semester begins	Fri., Dec. 3
Last day to withdraw from College without failure	Mon., Dec. 13
Last day to remove incomplete grades	Tues., Dec. 14
Last day of classes	Tues., Dec. 14
Final exams	Wed.-Sat., Dec. 15-18
Residence halls close at 8 p.m.	Sat., Dec. 18

President's Corner



Dear New Students:

Welcome! While all students returning to campus lift the spirits of the faculty and the staff, new enrollees are of particular interest. Freshmen arrive with all kinds of ideas and expectations, and likely with some fears. The fears we can and will work on quickly; they need not be a burden for long. Expectations take a little longer to realize, since they are more profound. Moreover, they are never met well if one looks to others--be they

faculty, fellow students, coaches or the cafeteria--to make them come to fruition. The best and the most realistic expectations are the ones we realize ourselves even if others help us.

The ideas we bring to a new situation are, or should be, the most exciting part of college life. What you come with is important, but what you leave with is even more important. That's what college life is all about, experiencing, through the educational process and the extracurricular activities, the modifications of our thinking, of our sense of who we are, of our vision from the future, some people call it maturing, others talk about becoming more realistic about the world, still others simply say growing.

I call it idea-crushing, the process of expressing our thinking, living by our thoughts, assimilating new ones and carefully observing that the resulting beginning "crunch" is what we want, even if the results are surprising. Everyone who opens himself/herself to that possibility will be surprised.

A final thought about this experience of maturing, growing or idea-crushing. This college, now over one hundred years old, has done its work well over the century, because it recognizes that one of the "ideas" in the mix of the college student's experience which is most productive is God. This is the reason for including courses in theology in the core curriculum. God is a powerful force in the history and present experience of all people, and we see ourselves best when we look at who we are in relation to God.

I wish all of our students success in the coming year. May you surprise the faculty and the staff with your brilliance and performance!

Sincerely in the Lord,

Monsignor, Frank M. Mouch
President, Saint Leo College

Interest inventory

Here are the activities you can become involved in at Saint Leo College:

Service Organizations

- Samaritans
- Circle K International
- Golden Legend (yearbook)
- Knights of Columbus
- Monarch (student newspaper)
- The Magazine (literary magazine)
- WSLC-TV (campus television station)

Academic, Cultural, and Professional Organizations

- American Marketing Association
- Army ROTC
- BACCHUS
- Computer Club
- Council for Exceptional Children
- Delta Epsilon Sigma
- National Honor Society
- International Food Service Executive Association
- Paciolo Accounting Club
- Psychology Club
- Saint Leo College Ambassadors
- Saint Leo College Chorale
- Saint Leo College International Students Association (SLISA)
- Sigma Tau Delta International
- English Honor Society
- Social Work Club
- Student Team of Admissions Recruiters (STAR)

Greek Organizations

- Delta Upsilon
- Interfraternity Council
- Panhellenic Council
- Phi Kappa Sigma National Fraternity
- Phi Mu National Sorority
- Phi Sigma Sigma National Sorority
- Sigma Sigma Sigma National Sorority
- Tau Kappa Epsilon National Fraternity
- Theta Phi Alpha National Sorority

Residence Hall Association

Other Organizations

- Student Leadership Coalition (SLC)
- Black Student Union (BSU)
- Union of Latino Students (ULS)



MONARCH ready for new year

By Thomas Turcotte, Editor

This special orientation edition has been completed through the collaborated efforts of the Monarch, Student Activities Office and the Office of Public Affairs in an attempt to make your transition into college as smooth and problem-free as possible. I hope you find it both informative and enjoyable.

During the regular academic year, the Monarch is published every other week and is available free to all students on campus. The Monarch reports the events on campus and offers a forum where student concerns can be heard. We also offer an organization where students involved or interested in journalism, photography or design can put their skills to a constructive purpose.

The Monarch encourages any new or returning students to become involved in their campus paper. The degree of involvement is totally up to you. Staff writers are always needed, and if you are

highly interested and ready to commit some time than paid editorial positions will be available in the fall semester. There will be information posted all across campus for those who wish to become involved.

The Monarch encourages all students to participate in extracurricular activities. If you are not interested in journalism than seek out any of the other numerous organizations on campus.

Good luck in your first year, and if you ever find that you need any assistance, please feel free to stop by and ask.



MONARCH

Saint Edward Hall
Saint Leo College
(904) 588-8355

Editor:
Thomas Turcotte, Editor

This is a special edition of the Monarch.

The regular Monarch is a biweekly student publication. This special issue was created with the help of many people whose hard work brought this publication to you. We hope you enjoy reading this issue as much as we enjoyed bringing it to you. Special thanks must go to Carol A. Henn, Suzanne Renczkowski, Judith Rochelle, Edith Ramlow, Mike Hines.

The opinions and stories expressed in the Monarch are not necessarily the views of the Editor or of Saint Leo College. We invite all old and new students to join the staff next semester. If you have any input into this publication, send it to: The Monarch, P.O. Drawer I, Saint Leo, FL 33574, or stop by the Monarch office located in the west wing of the second floor of Saint Edward Hall.



Language you can't live without

A.

Academic Probation:

Academic probation is when your cumulative grade point average falls below a certain level. It's something you don't want to be on. Check the *Saint Leo College Catalog*.

Academic Year:

Period including fall and spring semesters.

Advising:

Process of giving information on academic requirements and advising students on individual requirements offered by various academic divisions. The process by which you learn that you won't be able to register for upper division courses without first completing your lower division requirements.

Audit:

Taking a course for no credit—for the fun of it!

All-Nighter:

When your documented essay is due tomorrow, and you have only your name written down.

B.

Blue Book:

A little blue book with lots of blank pages you use to take an essay exam. This can be purchased at the campus store.

Bowl:

As in The Bowl, Grassy area located behind McDonald Student Center and bordered by Lake Jovita. It is a great place for bands to perform!

Burnout:

A state of mental and physical fatigue brought on by an all-nighter, combined with the most difficult exam you've ever taken.

C.

Cage:

As in The Cage. Area in the lower level of McDonald Student Center with the Snack Shack. Games and entertainment are offered here almost every Wednesday night.

Care Package:

Cookies that your mother sends to you that your roommate eats.

Circle:

As in The Circle. Round, grassy area in the middle of the parking lot outside Benoit, Roderick, and Henderson Halls. It's a great place to throw a frisbee or to park your car if you want to get it towed.

Class:

Regularly scheduled meeting of an academic course. Unfortunately, attendance is not an option. To pass a class, you must show up.

CLAST:

College Level Academic Skills Test--All sophomores take this test during their second semester. You must pass it to graduate.

Counseling:

Whether you have just broken up with your boyfriend/girlfriend or don't know what to do with your life, check out the counseling services.

Credit Hour:

The unit of credit is a semester hour defined as 50 minutes of class time. An average class load per semester would be 15 hours (or about five classes).

Cum GPA:

Grade Point Average--A cumulative average of all the grades received from courses taken.

Curriculum:

A specific set of courses required to achieve a degree.

D.

Daily Say-So:

Daily publication from the Student Activities Office that lists scheduled meetings and activities. It is posted on the walls of the administrative and academic buildings. It's official graffiti! You can also catch it on WSLC-TV's electronic bulletin board (EBB).

Degree:

The title given as official recognition of completion of a curriculum. A bachelor's degree is usually what you achieve first.

Drop-Add:

Process by which you can change your schedule free of charge. Last day to add a course is Sept. 11. Last day to drop a course without a \$10 dollar charge is also Sept. 11.

E.

Elective:

A course you can take that isn't required by your curriculum.

F.

Final Exam:

Test given at the end of the course, usually covering all the material taught during the course. This one often makes or breaks your grade.

G.

Graduation:

Something that seems to take so long to get here but always comes too soon.

Greeks:

Persons who belong to a fraternity or sorority named with Greek letters.

H.

Highlighter:

The reason your used class books have all those yellow lines through them.

I.

IFC:

Interfraternity Council, the governing body for fraternities on campus.

Intramurals:

Recreational sporting competition open to all students. The office is in the Faculty Office Building, ext. 8357.

K.

Kent Chapel:

The regular location of the Campus Ministry daily Mass, located immediately outside the McDonald Cafeteria entrance. Note, the Sunday night Mass is held at the Priory which is located on the west side of campus.

M.

Major:

The field of academic study you might change at least seven times during your college career.

Mall:

Long, grassy strip between Saint Francis Hall and Saint Edward Hall.

Midnight Munchies:

A highly contagious collegiate disease which usually strikes after "Late Night with David Letterman." It is the leading cause of the "freshmen ten."

Midterms:

A period in the semester when your stress level increases immensely.

Minor:

The field of second academic emphasis or someone who can't get into bars.

Monarch:

Student newspaper at SLC. Look for it at newsstands on campus!

P.

Panhellenic Council:

The governing body for sororities on campus.

S.

Saint Leo College Ambassadors:

A select group that serves as the official hosts and hostesses of the College.

SLC:

The Student Leadership Coalition serves as the student governing body, and works with the Student Activities office in planning and funding student activities.

Syllabus:

Schedule of homework and reading assignments for a class.

T.

TBA:

(It's not a building.) This abbreviation usually indicates a class, its instructor or its location that is "To Be Announced."

Transcript:

A summary document of your college academic coursework and performance.

Tuition:

Monies required to register for a class.

W.

WSLC-TV:

The College's closed-circuit television station. Also known as Channel 57, "Slick TV" or the EBB (Electronic Bulletin Board). See photo.



WSLC-TV

Join the *WSLC-TV Broadcast Team* in producing news, sports, features and entertainment, and other special programs for the campus closed-circuit television station. For more information, contact Edith Ramlow, Public Affairs, ext. 8366.

**EXTRA!
EXTRA!
EXTRA!**

Parents, you can read all about it by getting a full year's subscription to the College's student newspaper.

Just send \$20 to:
The MONARCH
P.O. Drawer I
Saint Leo, FL. 33574

NOT A SHY ONE IN THE BUNCH!

Meet your leaders

The Orientation staff for fall 1993 is comprised of sophomores, juniors and seniors. They've been chosen as orientation leaders because each is excited about helping you get off to the right start in college life!

An orientation leader will send a postcard to your home address before Orientation begins. You can match his/her name from the postcard with his/her picture in this paper, then you'll be sure to recognize the orientation leaders. Of course, he/she will be on the lookout for you, too. (Hint: The orientation leaders all avow that they are better looking than their mug shots portray them to be. Wait and see!)



Rosemarie Alfaro is a junior biology major from Miami, Florida. She is a member of Sigma Sigma Sigma, Circle K International, the Samaritans, and the Saint Leo College Ambassadors.



Robin Anderson is a junior criminology major from Lexington, Kentucky. She is on the tennis team and is a member of Sigma Sigma Sigma.



Alek Aponte is a sophomore criminology major from San Juan, Puerto Rico. He is the president of the Union of Latino Students and a member of the cross country team.



Cindy Arsenault is a junior elementary education major from Naples, Florida. She is a member of Circle K International and Sigma Sigma Sigma. She is also a student in the Honors Program.



Audrey Susan Brown is a sophomore elementary education major from Sunrise, Florida. She is a committee chair for the Fall Festival Weekend and a member of Circle K International.



Julianne Brown is a senior business major with specialization in human resource management from Medford Lakes, New Jersey. She is president of Theta Phi Alpha, a Saint Leo Ambassador and a member of STAR.



Heather Clark is a junior psychology major from Bristol, Connecticut. She is vice-president of Theta Phi Alpha, a Panhellenic delegate and an SLC senator.



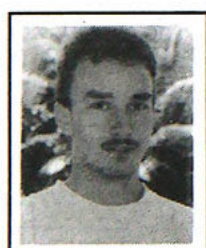
Lenee Essig is a sophomore liberal arts major from Palm Coast, Florida. She is on the Fall Festival Weekend Committee, a Saint Leo Ambassador and a member of Sigma Sigma Sigma.



Dominick C. Filipponi is a sophomore criminology major from Tarpon Springs, Florida.



Jennifer Grant is a senior English literature major from Tampa, Florida. She is a Saint Leo Ambassador and a member of Sigma Sigma Sigma and STAR.



Raymond C. Green III is a sophomore criminology major from Lincoln, Park, New Jersey. He is the treasurer of Circle K International.



Pam Kelly is a senior biology major from Largo, Florida. She is a member of Sigma Sigma Sigma and secretary of the Junior Class.



Renae S. Nowicki is a senior biology major from Detroit, Michigan. She is active in SLC.



Mindy Parworth is a senior art major with a minor in marketing from Two Rivers, Wisconsin. She is the assistant editor of the yearbook, treasurer of Delta Epsilon Sigma National Honor Society and a member of STAR and Sigma Sigma Sigma.



Becky Rodriguez is a senior criminology major from Lutz, Florida. She is vice-president of Sigma Sigma Sigma.



Dionne Swart is a senior sports management major from San Antonio, Florida. She's captain of the cheerleading squad and a member of Sigma Sigma Sigma.



Felicia Sinopoli is a sophomore psychology major from Coconut Creek, Florida.



Nicole T. Renna is a education major from Orlando, Florida. She is involved in intramural sports.

Board of Governors

The 1993 Orientation Board of Governors planned the Orientation schedule with you in mind. Selected last fall by the '92 staff, the governors have helped train the '93 Orientation staff. They want to hear your compliments and complaints about our program. Be sure to look for them during Orientation check-in! They are THE BEST! We are sure you will agree with us.



Michael Brewer is a senior accounting major from Spring Hill, Florida. He is vice-president of operations of the Student Leadership Coalition (SLC), a Saint Leo Ambassador, and a member of both Student Team of Admissions Recruiters (STAR) and the Paciolo Accounting Club.



Becky Buller is a senior elementary education major from Warner Robins, Georgia. She is an active member of Circle K International, the Samaritans, and the Saint Leo College Board of Trustees.



Thamir Kaddouri Jr. is a senior double major in pre-med and pre-law from Monroe, Connecticut. He is the president of SLC, chair of the Student Life Council, a member of STAR, a Saint Leo Ambassador and a Monarch staff writer.



Mark Segreto is a senior hotel/restaurant management major from Bayshore, New York. He is a member of Sigma Alpha Epsilon and a big brother of Sigma Sigma Sigma.



Ginger Sheehy is a senior theatre major from Brandywine, Maryland. She is vice-president of activities of SLC, a Saint Leo Ambassador, and a member of Sigma Sigma Sigma.



Nadia Vanteffelen is a senior double major in hotel/restaurant management and marketing from Rochester, New York. She is the treasurer of Sigma Sigma Sigma, and a member of the tennis and volleyball team and STAR.



Peter J. Smith is a junior double major in English and secondary education from Seaside Heights, New Jersey. He is on the executive board of the SLC, an anchor for WSLC-TV and a member of STAR.



Heather Wasielak is a sophomore biology major from Coral Springs, Florida. She is a member of Theta Phi Alpha.



Jon Wall is a sophomore criminology major from North Caldwell, New Jersey. He is a member of Tau Kappa Epsilon.



Caroline Webber is a junior elementary education major from Miami, Florida. She is the president of Circle K International, a Saint Leo Ambassador and a member of the Fall Festival Weekend Committee and the Environmental Concerns Committee.



Cecelia Sweat is a senior human resources administration major from Lakeland, Florida. She is a member of Phi Mu and is active in the SLC.

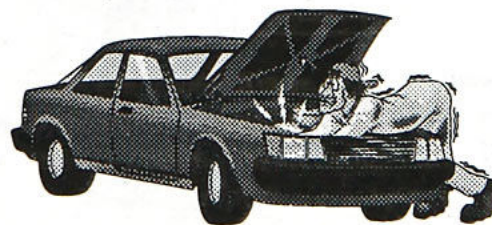
Not pictured
Skye Langmack is a sophomore criminal justice major from Waltham, Massachusetts. She is secretary of the Black Student Union, secretary of the productions committee, and a member of Theta Phi Alpha and the Cultural Diversity Committee.

Sean Saunders is a senior business management major from Fort Lauderdale, Florida.

Don's Towing and Auto Salvage

24 HOUR TOWING

Engines * Transmissions * Tires * Body Parts

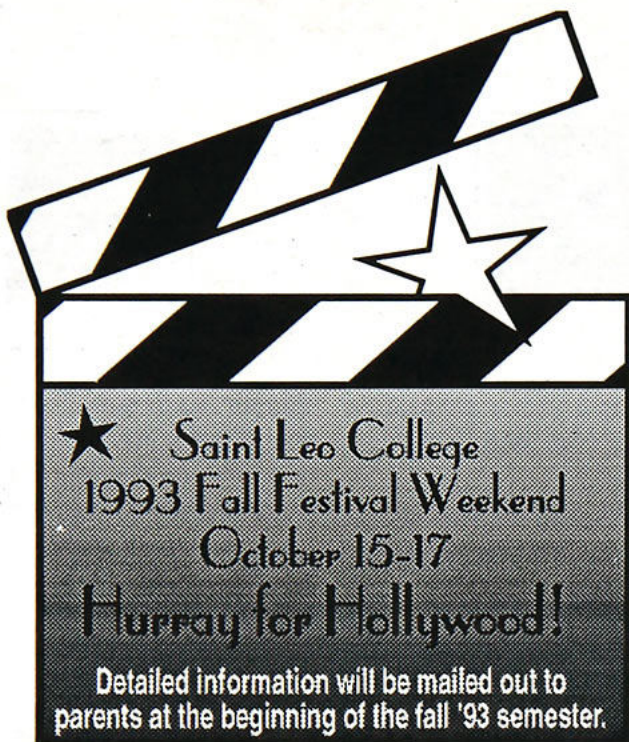


Mechanic on Duty

4175 Pasco Road—San Antonio, FL 33576
(904) 588-3828

We accept Checks, VISA and MasterCard

Open 7 DAYS



Important numbers to know

General Campus Information	(904) 588-8200
President's Office	8242
Academic Affairs	8244
Admissions Office	8283
Athletics	8221
The Cannon Memorial Library	8258
Center for Distance Learning	8203
Financial Aid	8271
Golden Legend (yearbook)	8355/8253
Institutional Advancement	8250
Intramural Department	8357
Monarch	8355/8253
Orientation	8358
Registrar	8233/8235
Security	8432
Student Activities	8358
Student Affairs	8266
WSLC-TV	8366

Inquiring minds want to know

Dear Orientation Leader,

What are the hours for the Snack Shack in McDonald Student Center?

-Signed: Marvin Munchie

Dear Marvin,

The Snack Shack has lots of tasty items for your "snack attacks." The Snack Shack, located in the basement of McDonald Student Center, is open from 7:15 a.m. to 9 p.m., Monday-Friday. The hours are 11 a.m. to 6 p.m., Saturday and Sunday. The Food Service Department is open for requests concerning the Snack Shack and can be reached at ext. 8345.

Dear Orientation Leader,

Where can I find information about getting a job? What types of jobs are available on campus?

-Signed: Wanna Job

Dear Wanna Job,

The first stop for an on-campus job is at the Financial Aid Office. Most campus jobs are based on financial need and are part of the College Work Study Program which is partially funded by the federal government. But, if you want to work, find out the possibilities and restrictions from the Financial Aid Office and the Career Development Center, both located in Saint Edward Hall.

Dear Orientation Leader,

I understand that I can drop and add classes. What are the important dates and other information to keep in mind?

-Signed: Full-Time Student

Dear Full-Time Student,

There are some important facts and dates to consider if you intend to drop or add classes. The last day to add classes for fall 1993 is Wednesday, September 15. This is also the last day to drop classes without being charged a \$10 fee.

The last day to drop a class without failure is Thursday, November 4. If you drop a class, please be aware of the consequences. Students who drop below 12 hours will not be full-time students. Full-time students who do this may lose their eligibility for financial aid and may not be eligible to live in the residence

halls. All of these dates are listed in your Datekeeper/Student Handbook.

Dear Orientation Leader,

Is there anything to do at Saint Leo at night or on the weekend?

-Signed: Suzie Socialite

Dear Suzie,

You betcha! The Student Leadership Coalition, along with other clubs and organization, plans an average of one event per week. Couple this with all the sports events and club meetings and you will have to budget your time so you can study.

Dear Orientation Leader,

Do the instructors really spend time with the students?

Signed: Shy and Timid

Dear Shy and Timid,

Yes! Yes! Yes! The instructors at Saint Leo have a commitment to students, and the philosophy of our school is very people oriented. You will find that all the

students appreciate the dedication of the staff.

Dear Orientation Leader,

When is the pool open during the academic year?

-Signed: Mark Spitz

Dear Mark,

You still do keep in shape after winning all those Olympic gold medals, don't you? The schedule for the pool is noon to 7 p.m. Monday-Friday and 11 a.m. to 6 p.m. on Saturday and Sunday.

Dear Orientation Leader,

I am a transfer student. May I pledge a Greek organization my first semester?

-Signed: Jimmy the Greek

Dear Jimmy the Greek,

Transfer students may pledge if they have at least 12 transferable credits and a grade point average of at least 2.25. First semester freshman transfers with less than 12 credits are not eligible to pledge a social Greek organization.



Greek Fun
Greek sororities and fraternities join in various social events during the year.

Dollars and sense

If you wish to open a checking account, the following local banks are available:

- First Union Bank, Hwy 52, San Antonio (within walking distance)
Lobby hours:
M-Th 9 a.m.-4 p.m., Fri 9 a.m.-6 p.m.
- NCNB, 501 E. Church Street, Dade City
Lobby hours:
M-Th 9 a.m.-4 p.m., Fri 9 a.m.-6 p.m.
- Sun Bank, 700 S. 7th St., Dade City
Lobby hours:
M-Th 9 a.m.-4 p.m., Fri 9 a.m.-6 p.m.
- First National Bank of the South, 303 S. 8th St., Dade City
Lobby hours:
M-Th 9 a.m.-4 p.m., Fri 9 a.m.-6 p.m.

You'll need a local mailing address before you can open a checking account. Most banks also require a picture I.D. with a signature. Post office boxes are available from the U.S. Postal Service (located on campus) when you arrive. All students are required to rent a box.

The cashier's window, located on the second floor of Saint Francis Hall, is open from 1-4 p.m., Monday-Thursday and from 1-5 p.m. on Friday and on pay day. Pay days are the 15th day of the month and the last day of the month.



Meet the President
Monsignor Frank M. Mouch enjoys talking with SLC students.

Greeting from the vice president of student affairs

Greetings!

We welcome you to Saint Leo College!

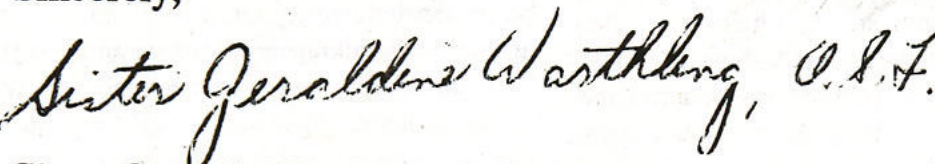
Our hope is that these years at Saint Leo College will be fantastic for you. How you spend them is primarily up to you. There are many people here to help you, many options from which to choose—but you are the one most responsible for your growth. Take that as a challenge.

We encourage you to participate in the activities held on campus; join a club or an organization which will help you discover your leadership qualities and get to know a group of people. The Samaritans, an organization open to persons of every faith, is a great way to get involved in service projects on and off campus and to meet wonderful people. One can also become involved in the spiritual aspect of the Samaritans. All are invited to participate.

Take advantage of all of the offices of Student Affairs: Career Development Center, Counseling Center, Health Center, Student Activities, and if you live on campus, Residential Life.

College can be a learning and growing experience if you work to make it so. It won't just happen.

Here's to you! May these four years be a wonderful time of learning. Stop in anytime.

Sincerely,


Sister Geraldine Warthling, O.S.F.
 Vice President for Student Affairs

Student Affairs Staff

- Career Development Center Coordinator Renee' Borns
- Counseling Center Director Dr. JoAnn Quinn
- Health Center Director Bobbi Sponheim, L.P.N.
- Student Activities Supervisor Cindy Lawson
- Area Coordinator Mary Lutz
- Campus Ministry Director Fr. Mike O'Brien
- Residential Life Director Charlie Macke

Flying in?

Students flying into Tampa International Airport for Orientation need to return the Transportation Reply Card in this packet. Saint Leo College vans will be leaving the blue area of this airport at 10 a.m. and 1 p.m. on Thursday, September 2 for freshmen students. There is a \$20 charge. If you have misplaced your Transportation Reply Card, please call (904) 588-8358 to reserve your place on a van.

Since travel in and out of Florida during December and January is quite heavy, students planning to fly home for the holidays should make their reservations as early as possible. The middle of September is not too early.

The departure date for Christmas vacation is determined by an individual's final examination schedule. The examinations are scheduled on December 15-18. We suggest that reservations be made for December 18 before 8 p.m., as residence halls close at that time. Again the middle of September is not too early to make these reservations.

Long distance service

Students who wish to establish an account to make long distance calls must complete an application for long distance service and return it to the Telephone Service Department, Saint Leo College, P.O. Box 2036, Saint Leo, FL 33574. Students may have their bills sent to their campus address or to their home address. Any bill sent home must have the application signed by a parent or guardian.

Individual authorization codes will be issued to students who want to make long distance calls. This code will be issued to students who want to make long distance calls from any campus telephone and to be billed individually. Each student will have his or her own code number. Applications will be mailed out during the summer.

Your freshman mentor

You will journey through the first semester at Saint Leo College with the help of your academic mentor.

All entering freshmen are assigned a mentor. A mentor is a faculty member or administrator who can help ease the way, guide and direct you. Your mentor can help interpret the things you will be experiencing as a new college student.

You will spend three separate sessions during Orientation with your freshman mentor learning about the courses you will take and college policies and procedures such as registration, adding classes and dropping classes. You will also examine the purpose of higher education and your place in it.

During the semester, your mentor will continue meeting with you in a one credit course, Seminar on Self-Awareness, which is required of all freshman. In this seminar, you will have the opportunity to deal with problems you may encounter, build your communication skills and participate in group discussions on what you can expect to get out of your college years and what you will be expected to put into them.

By the end of the semester, you will understand your place in our college community and how to work within it to attain your academic and personal goals.

WANTED:

- Cartoonists
- Columnists
- Editorialists
- Photo Editor
- Sports Editor
- Staff Writers
- Business Manager
- Office Manager
- Design Editor
- Associate Editor

Student Leadership Coalition

The Student Leadership Coalition (SLC) is a perfect way for you to get a start here at Saint Leo! SLC is in its second year of growth. It was recently founded by the merger of the Student Government Association and the College Union Board. Some of the responsibilities of this organization are to monitor the funding of approximately thirty-one student organizations on campus and at the same time to provide a wide variety of activities for students. SLC addresses issues effecting students and student life here at the College. We are composed of approximately five different committee systems. Each committee addresses one specific issue ranging from production for comedians and entertainers to environmental concerns. One committee that I would especially like to let you know about is the Freshman Concerns Committee. This committee tackles questions and issues that directly effect freshmen. I hope you get involved while you attend Saint Leo College. If you have any questions feel free to ask myself or any of the other officers. I look forward to meeting each and everyone of you.

Sincerely yours,
 Thamir A.R. Kaddouri Jr.



Athletics
 Show your Green & Gold spirit at all the Monarch athletic events.

Home away from home

The Department of Residential Life welcomes you to Saint Leo College and to our campus community. In the coming months, you will have many new opportunities and will experience new environments, both in the classroom and in your residence hall. You will be challenged by the fact that you are expected to be responsible for yourself and in the process of learning how to become a responsible young adult, you will learn much about yourself.

The staff members in the Department of Residential Life are available to help you answer questions that you will have about Saint Leo College, especially those about living in the residence halls. You may wonder why we keep referring to the "dormitories" as residence halls. We believe that there is a big difference between the "dorm" your parents lived in when they went to college and the place you will be living in at Saint Leo College. A true "dormitory" is a place where people sleep and that's it. Typically, there was a house mother who kept a tight rein on her charges and there were curfews for the female students. A residence hall is a place to live, laugh, study, sleep, learn, and have fun. You will spend a lot of time in the residence halls here and our staff is committed to providing opportunities for you to get the most out of this experience. The residence hall staff includes student staff members, resident assistants and graduate head residents who have been hired to be leaders and community builders where they live and work. The student staff members work hard to build a sense of community on their floor or wing and in the residence hall as a whole, through all kinds of social, educational, and recreational activities.

WHO'S WHO?

A resident assistant (RA) is a full-time student who lives on your floor. This person wants to work with other students and is trained to deal with all kinds of situations. Most importantly, your RA has expressed a strong interest in getting to know you and every other resident on your floor. Other aspects of the RA position include building the floor community, being available for any emergencies, and upholding and enforcing residence hall policies.

A graduate head resident (GHR) is a full-time student, who is responsible for an entire residence hall and supervises the RA's staff. The GHRs are also very interested in getting to know all of their residents and will work with the RA's staff to develop a sense of community in the residence hall.

The coordinator is a full-time, professional staff member who lives on campus and works in the Department of Residential Life located in Saint Edward Hall. Responsible for the overall operation of several residence halls, the coordinator works with students in a variety of ways, and is committed to the idea that living in the residence halls is an opportunity to learn and grow for residents and staff members alike.

The housekeeping staff cleans the bathrooms and common areas of the residence halls. Maintenance workers are available for repairs in your residence hall room. They are an important part of your living environment. Take some time to get to know each of them.

WHAT DO I NEED TO BRING?

When planning what to bring, it is important to remember that you will be sharing a room with someone else. To avoid unnecessary duplication, it is a great idea to contact your roommate and decide who is bring what (telephone, television, stereo, refrigerator, etc.). Some roommates talk about room decorations and personalization before they arrive and from the way their rooms look, this isn't a bad idea.

For safety reasons, and since a meal plan is required of all resident students, the only cooking appliances permitted are small microwave ovens, coffee makers, and hot air popcorn poppers. Any other cooking appliances, such as hot pots and toaster ovens are not permissible.

Refrigerators in sizes up to 4.5 cubic feet are acceptable. Refrigerators of 2.5 cubic feet are rentable through the Department of Residential Life following check-in on an available basis.

Look for signs with the rental dates and times posted in your residence hall. Refrigerators are rented for an entire academic year for \$55 plus a \$10 deposit, payable by check only please. The \$10 deposit is refunded after the refrigerator has been returned at the end of the academic year.

Definitely plan to bring your own linens and towels, since they are not provided. If you decide you would rather wait and purchase them when you arrive, your orientation leader or your RA will know where the best shopping is located!

As much as we love pets, they are not permitted in the residence halls of Saint Leo College. Tropical fish are fine, but all other creatures, furry or not, are not permissible.

IF I HAVE A PROBLEM WITH MY ROOM, WHAT DO I DO?

If there is a problem in your room when you arrive, such as an air conditioning unit not working or a light bulb not working, your RA can assist you in contacting the appropriate office. Maintenance problems will be referred to the maintenance staff who will attend to the request as soon as possible. If you have questions about the furnishings in your room, please talk with your RA. He/she can give you information about the College's policies, but the best source is the *Student Handbook*.

YOUR ROOMMATE...

Your roommate is a unique person, just as you are a unique person with special likes, dislikes, interests and abilities. Living with a roommate is probably going to be a new experience for you. A

roommate is someone you can laugh and study with, ask for advice, and even talk to about being homesick. You never know, he/she could be in the same boat!

As with any relationship, the most important part in getting to know and getting along with your roommate is good communication. Because people do not understand each other automatically, you will probably have to explain your expectations to your roommate, and he/she will likewise have to explain his/hers to you. Some topics you will want to discuss are study time and noise, privacy, borrowing clothes and other personal belongings, guests in the room, and more. By talking through these and other important topics at the beginning of the semester, you will be able to compromise and develop a positive relationship with each other.

HOW DO I TALK WITH MY ROOMMATE IF WE HAVE A CONFLICT?

The first person you need to talk with when you and your roommate disagree or have a difference of some sort is your roommate. Although you may be two very different kinds of people, most concerns and difficulties can be resolved by talking openly and honestly and by compromising. Living with someone who is different from you can be a challenging experience for both of you. However, focusing on your similarities and the different things you can teach each other is a healthy attitude to have. Not talking to your roommate only creates more tension and discomfort for both of you and is about the worst choice you can make.

If for some reason, you and your roommate are not able to resolve your differences after talking and compromising, the next step is to talk with your RA. The RA will have an objective perspective and will be able to serve as an impartial resource for both of you.

SAFETY AND SECURITY....

YOUR JOB, OUR JOB

The entrances and exits of the residence halls are locked 24 hours a day for your protection. Your safety is very important to us, and we need your cooperation to make the residence halls a safe place to live. Propping exterior doors open may be convenient for you and your friends, but it jeopardizes other residents in the building. It is equally important, even though we strive to develop a sense of community in your residence hall, that you keep your room door locked - even when you are just down the hall or asleep in your room. **Making the halls a safe place to live is not only our job, it is yours as well.**

WHAT ARE THE VISITATION HOURS FOR THE RESIDENCE HALLS?

Guests are to use telephones located outside the entrances of the residence halls to call the resident they are visiting. The resident must meet the guest at the

entrance; guests of the opposite gender must be escorted by the resident for the duration of the visit in all campus residence halls.

Visitation hours have been created and are upheld for the safety of the residents in the halls as well as for the general well-being of the residence hall community. The hours provide more than enough time for visiting with friends while allowing other residents the opportunity to study and sleep. See the *Student Handbook* for more information.

WHAT IF?

Where can you do laundry? What are the bookstore hours? What are the visitation hours? Your RA and the other RAs in your residence hall will know lots of answers to your questions. If they do not know an answer or are not sure, they are trained to find someone who does know the answer to your question(s). So go ahead and ask!!!

HOW DO I PICK UP PACKAGES THAT I SENT TO THE COLLEGE?

Resident students may pick up their packages from the secretary in the Department of Residential Life. The first week of school, packages may be picked up from 9-11:30 a.m. and from 1:30-4:30 p.m. in Saint Edward Hall.

ARRIVAL

We are very excited about your arrival on campus. We will be working especially hard the couple weeks before you arrive to get things ready for your arrival. Knowing the weather in Florida, check-in day is bound to be hot and muggy. You may be moving your items up stairs, so dress comfortably!

The Orientation Schedule gives you plenty of time to unpack, so don't worry about getting it all done in the first day. Spend some time getting to know your roommate, neighbors, your RA, and your orientation leader.

You will receive your room assignment sometime after mid-July. We will enclose your roommate's name and address as well as other information which you will find useful as you begin to pack. Please read it all carefully and then get ready for a great year!

See you in the halls!
Saint Leo College
Residential Life Staff

By the way, the *Student Handbook* is provided for each student at Saint Leo College. For those of you living on campus, it contains important information about living in the residence halls for which you are responsible. We strongly suggest reading through the *Student Handbook* when you arrive so that you will be better acquainted with Saint Leo College

