



MONARCH

Volume XXVIII Issue 10

A Student Publication of Saint Leo College

April 1, 1993

Inside This Edition . . .

Student enrollment	4
Brain Bowl	5
SLC Journal	6
Politics	7

Truth is revealed about Norm Kaye

Special to the Monarch

What really happened?

I know that many of you are aware of the story that appeared in The Tampa Tribune on Friday, March 26, alleging certain incidents that involved the basketball team and the coaching staff. Many of you may also be aware of the sudden flurry of media activity on the campus that same day as a result of the story. And I'm sure all of you are wondering how much is truth and how much is fiction.

First of all, we need to keep in mind that many reporters do not practice responsible journalism. They will fasten onto an isolated piece of information and sensationalize it, conveniently omitting any facts that would make you realize it is actually a non-story.

What really happened between the basketball team and the coach? In all sensibility, probably a clash of styles between players and instructor. Norm Kaye learned his trade in the hard-line school

of coaching. He is a stern disciplinarian, believing that learning discipline builds personal strength and character. But abusive? Hardly. As with any conflict, the people involved handled it in an appropriate manner and it was dismissed from everyone's mind.

"Really, this is a matter of perception," Monsignor Mouch related to a reporter from the St. Petersburg Times. "Coach Kaye did what he thought a good coach should do. This is not abuse."

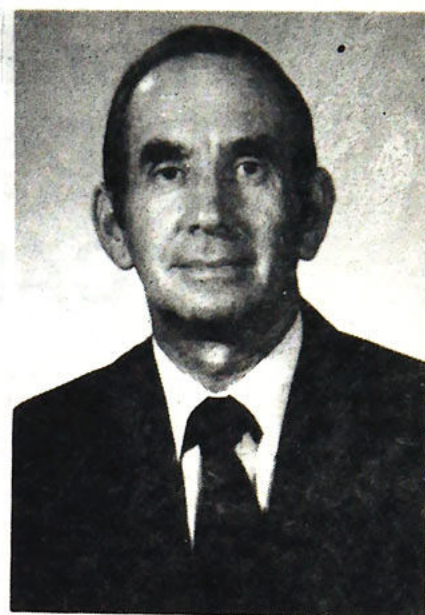
Additionally, whatever the incident was, it happened last September, well before the start of the season. The school year progressed, the season began, the team played on. Why then, you ask, did this story even see the light of day? Because months later an eager young reporter decided he had the makings of an article that could get the attention of his superiors and promote his own situation. No amount of truth or sanity could dissuade him from writing an aggressive story based mostly on innuendo.

Some of you know Norm Kaye, many of you may not. I think it is important to understand who this man is who is both at the eye of the storm and a legend in Saint Leo history.

All of you who participate in anyway in the athletic program have him to thank for many things, not the least of which is the program itself. He came to Saint Leo in 1966 to head up the physical education program and to direct a drive to better the athletic facilities. The very professional baseball field - Thomas B. Southard Stadium - with its professional lights, the soccer field and Marion Bowman Activities Center, which houses the gymnasium, weight room, dance studio, athletic offices, etc. all came about as a result of his efforts.

In 1967 he took on additional responsibilities as dean of students. In 1969 due to a money crunch he also took over as basketball coach, stepping down as dean of students.

In 1976 he founded the Sunshine State Conference, considered the toughest



Norm Kaye

Special to the Monarch

Please turn to KAYE, page 5

New members join the Board of Trustees

Special to the Monarch

J. Joseph Kruse of Warwick, Rhode Island and formerly of St. Petersburg, and Dr. George Dooris, chairman of the SLC department of science and mathematics, were officially elected to the SLC Board of Trustees at its quarterly meeting on the college campus Friday, March 5, 1993.

Kruse is president and CEO of Kruse & Co., a merchant banking firm incorporated in Florida. He also serves Of Counsel to the similar firm of G. William Miller & Co., Inc. He received his B.A. at the University of Florida, his M.A. at Florida State University, attended the Aspen Institute for Humanistic Studies and the Harvard Graduate School of Business Advanced Management Program.

He previously served as senior vice president of G. William Miller & Co., Inc., and before that in the same position at Textron, Inc. In 1960 he served as staff director for the State of Georgia for John

F. Kennedy's presidential campaign. He is a trustee of St. Joseph's Hospital and Salve Regina University, a board member of the Providence (RI) Performing Arts Center and the Barbara B. Mann Performing Arts Hall in Fort Myers (FL), among others.

Past civic service includes the United Way of Southeast New England, Rhode Island Historical Society, Catholic Charities of the Diocese of Providence, the Rhode Island State Council on the Humanities and the National Council on Catholic Education. He has received numerous citations for promoting the hiring of the disadvantaged as well as the Papal Honor of Knighthood in the Order of St. Gregory the Great.

Kruse is no stranger to Saint Leo College. His father coached at St. Paul's High School in St. Petersburg in the late 40s. At that time Saint Leo was a prep school and the two institutions were arch rivals.

Dooris will serve as the faculty representative to the board, replacing Dr. Edwin

J. Doran who resigned to accept the position of SLC associate vice president of academic affairs for distant learning. Faculty representatives serve a two-year term on the board, unless they leave the institution prior to the completion of the term.

He received his B.S. in biology from St. Peter's College in New Jersey, his M.S. in the same field from Seton Hall University and his Ph.D. in zoology from the University of Georgia. Prior to joining the SLC faculty in 1972, he taught at Seton Hall and at St. Peter's. In 1994 he took sabbatical leave to pursue research on hydrilla, an aquatic plant, at the CHEMS center at the University of South Florida.

Dooris is a noted biologist and the author and co-author of several publications on scientific research focusing on the environment and the effects of environmental changes in lake water. He served on several local task forces that dealt with the effects of mining on the environment and on compliance with growth management agreements.



Dr. George Dooris was recently elected to the SLC Board of Trustees.
Special to the Monarch

Student elections draw near

By Thomas Turcotte
Editor

The Student Leadership Coalition officer elections are quickly approaching and will be held April 7th in McDonald Student Center. Students who are inter-

ested in running should pick up an application in the Student Activities office, located in the west wing of Saint Edward Hall. Applications are due April 2nd.

All of the offices are being filled in this election. The officers include president, vice president of operations, vice president of activities, secretary, director of finance, director of communications and the activities coordinator.

The election will be overseen by the Judicial Board, a group of four senators, and Cindy Lawson, supervisor of student activities.

For more information, contact Cindy Lawson, any member of the SLC executive board or a senator.

Circle K receives awards

Special to the Monarch

On March 19 - 21, ten Circle K members, including myself, attended the District Convention in Gainesville. We stayed at the University Center Hotel where all activities took place. Present were twenty clubs from colleges and universities from all over the state, which offered, a great opportunity to socializing. The weekend was full of activities such as: electing district officers for next year, making changes in the constitution, receiving ideas on how to better the club, dancing the night away, and receiving awards.

Saint Leo really cleaned up at the awards ceremony. We received a total of eleven

awards out of thirteen categories. The club as a whole received the Interclub Award, Club of the Year, and Single Service Second Place. Individual awards went to Kimberly Weissman for Best Newsletter and Eric Ray for Outstanding Club Member. Awards were also given out for each officer position first through third place. All of our officers received an award. Becky Buller received First Place president. Amy Curran and Amini Awe received Second Place for vice-president and treasurer respectively. Caroline Weber received Third Place for secretary. Becky and Amy also received awards for being outstanding chairpersons of the Fire Up Florida Committee and the Awards Committee respectively.

Index

Editorial	4
On-Campus	5
In Focus	6
Spotlight	7

ANARCHY

By Our Talented Little Hands

For Our Fragile Little Egos



April 1, 1993

Edmonds cuts hair, goes "Yuppie"

Special to the Anarchy

Dr. Mark Edmonds has changed his image. No, Edmonds has changed his whole life-philosophy. He's gone "Yuppie". Who would have thought? Edmonds had his hair and beard surgically removed and replaced with a perfect hair weave. His blue denim jeans were burning in his garbage can yesterday.

When asked where Edmonds was going in his new Amante' suit, he replied "I'm going to throw away my video of 'Easy Rider' and by a BMW". When asked what Edmonds plans are for the future, he

explained, "I'm going to subscribe to the 'Sharper Image' catalogue and GQ magazine, sell my hounds and buy a poodle, and apply for an administrative position--preferably sitting behind a computer.

How does Mrs. Edmonds feel about the change? "It's wonderful, instead of drinking beer, he drinks 'Avian'. He also works out every day", she replied.

What brought about the transformation? "It was within me all the time. You might say I got in touch with my feminine side. The winning Lotto ticket might have helped too," he said.



Dr. Mark Edmonds ---Before the transformation. Special to the Anarchy



Edmonds, After the transformation---aka "Preston". Special to the Anarchy

LEO-LIES

Special to the Anarchy
By "The Thinker"

1. After a recent phone call from the Vatican, Monsignor Mouch has taken a vow of poverty.
2. Dr. Edmonds drives a pink cadillac.
3. Dr. Van Wilt would not make an excellent vampire.
4. Dr. Reynolds does not look like Les Nessman from WKRP in Cincinnati.
5. Dan Ferreras does not leave puddles of "machismo" where he walks.
6. Dr. Anderson did not chant the word "breasts" seventeen times while visiting a Romantic poetry class.
7. The nuns cook as well as they pray.
8. Saint Leo security is a highly trained, highly paid, special forces unit.
9. Marriott food service and the biology labs don't have some kind of an agreement.
10. BIO majors are not chemically unbalanced.
11. The Monarch makes regular contributions (aside from constructive criticism) to Saint Leo's Greek organizations.
12. The Saint Leo faculty, correction--staff, is overpaid.
13. Lake Jovita is safe to drink from.
14. It would be a good idea for the Admissions office to show the movie "Deliverance" to welcome new students

to the Saint Leo/San Antonio community.

15. We all adhere to the speed limit and stop signs on campus.

16. You don't need to use "The Force" to find student parking.

17. There aren't way too many Nintendos around for an institution of higher learning.

18. There aren't way too many people on-campus that listen to Rush Limbaugh.

19. Every structure at Saint Leo is not older than dirt.

20. In reference to the restrooms, all men at Saint Leo have excellent aim.

21. The theatre building is not a dilapidated fire-trap.

22. The Golden Legend will come out on-time.

23. Chewing tobacco is a step-up from smoking.

24. The TRS-80's in the reading lab are not boat anchors waiting to happen.

25. Non-Greeks are framing Greek organizations by writing Greek initials in campus graffiti.

26. It isn't easier to get financial aid if your a pregnant, diabetic, Afro-oriental-hispanic, Catholic female with one wooden leg.

27. Laundry detergent in the Snack Shack is a good buy.

Unrelated Stories (Honest)

By Anarchy Staff Writer

Special to the Anarchy

There has been a recent influx in the number of Greek fraternities and sororities on the Saint Leo campus.

When several fraternity and sorority presidents were asked what they attribute this increase in numbers to, one explained Well, I suspect it is the positive effect we have on the Saint Leo community. By doing various service-oriented activities, such as night-time gardening, we are improving the college in leaps and bounds. I would like to add that our members are no longer limited to the stereotypical Greek that many joke about. We now have a greater percentage of pledges with superior academic averages and some are even in the honors program. We welcome all new pledges with open arms.

28. Diaphragms will begin being sold in the Snack Shack next week, right next to the edible condoms.

29. Saint Leo is not your typical American high school.

30. Freshmen are not weak-willed followers.

31. The Monarch staff is not everyone's worst nightmare---arrogant, elitists with freedom of the press.

(Why 31 lies? Why not?)

Strange green pods were found growing in various places around the campus. The science department has not yet determined the nature of these non-indigenous plants. The pods are not limited to any particular area on campus. There is some speculation that there is a connection between these pods and the strange lights recently seen in the sky.

It is unknown how long these pods have been on-campus. The science department advises that all students inspect under their beds, in closets, and in cars. Again, they could be anywhere.



Unsung heroes receive praise

By Thomas Turcotte
Editor

In my past few editorials, it seems to some that I have been taking a somewhat negative approach.

In order to show that I can give praise where it is due, I have decided to commend the unsung heroes of Saint Leo College. These individuals make tremendous efforts to maintain and further the college, but their compensation seems hardly adequate. The least that we can do

is thank them for their efforts.

The first group that needs more praise and less ridicule is plant operations. If it were not for them the campus environment, which is rather pleasant, would have deteriorated beyond any hope of repair by now. A few idiots on this campus destroy the halls and the bathrooms every weekend, and every weekend the vigilant plant operations workers bring it back to its former stature. Whatever they get paid, it isn't enough. I have seen some pretty horrendous forms of filth, and every time they clean and discard of it with-

out complaint.

Another group that are undercompensated are the faculty. For the most part, the faculty creates the entire academic environment on this campus. Without them, any hope of an education is gone. Why do they stay on this campus? It certainly isn't for the money. Comparable four year colleges offer their professors far more.

I can only guess that they remain here for some personal satisfaction that they gain from passing on their knowledge.

This satisfaction is certainly not enough compensation for what they give us in return. We truly appreciate their efforts.

The final group that should be recognized is the support staff at the college. The administration can offer policy, but it takes the staff to carry out the very necessary day-to-day operations of the college.

If I missed anyone, I apologize. You know who you are. The men and women whose paychecks fall far short of their work. We thank you for your dedication to the college and to the students.

Rumor of school closure is firmly dispelled

Special to the Monarch
By Robert A. Campbell

As the Coordinator of Retention Services, I want to make some observations concerning comments and questions which students have addressed to me about enrollment at the College.

More specifically, a few students have reported to me that there is rumor that the College is in such financial difficulty because of low enrollment that it will have to close. Thus the expressed purpose of this letter is to state categorically to all of you that **this rumor is false, and that it utterly has no basis in reality.**

Changing enrollment patterns were forecast by the administration as early as 1988-89. At that time, the College began to increase academic standards in order

to recruit and retain a higher quality student population.

The expected decrease in enrollment was complicated for a couple of years by demographic changes in the population of America, which resulted in far fewer 18-22 year olds until the mid-1990's. The demographic changes in the population, coupled with planned enrollment changes resulting from higher academic standards did cause a decrease in enrollment. However, because of the superior efforts by the staff of the Admissions office our problems were minor compared to similar institutions during the same time period.

Due to dramatically increased applications and the diligence of the Admissions staff, we know now that we will maintain our current level of enrollment,

a strong indicator that we have been successful in meeting the challenge of temporarily declining enrollments. (Due to this increase in students, you'll want to make sure that you take advantage of advanced registration!!!).

There is a crucial element in the College's financial status that has been ignored by those who believe in the negative rumors. Even though enrollment on campus has been reduced the past few years, that has not been the case with the College's Center For Distance Learning. Enrollments in the Military Education Program, Weekend College and Evening College programs have continued to be

very high, because Saint Leo excels in providing degree program opportunities to non-traditional adults. Thus the College remains in very healthy financial condition.

I hope that you can see from this brief discussion that the negative rumors about Saint Leo College are quite unfounded. I hope that it is clear to all of you that Saint Leo College is quite successful at meeting challenges, and that we as an institution of higher learning have a very bright future. If you have further questions, I will be happy to try and answer them. Please call me at extension 8615 to schedule an appointment.

MONARCH

1989-1990 ASPA First Place with Special Merit
1989-1990 CPA Second Place with Special Honors
1988-1989 ASPA First Place Winner

Editor:
Thomas Turcotte, Editor

Design Editor:
Glenn Ladwig

News Editor:
Kim Weissman

Copy Editor:
Ron Broz

Office Manager:
Kim Weissman

Advisor:
Judith Rochelle

The *Monarch* is a biweekly student publication, written by the students, designed by the students and published in conjunction with the Office of Public Affairs.

The opinions and stories expressed in the *Monarch* are not necessarily the views of the Editor or of Saint Leo College. We invite all old and new students to join the *Monarch* staff. If you have any input into this publication, send it to: The *Monarch*, P.O. Box 1, Saint Leo, FL 33574, stop by or call the *Monarch* office located in Saint Edward Hall, room 238, (904) 588-8355.

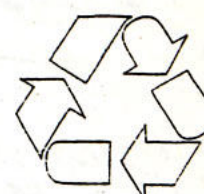
Full responsibility for the material that appears in this publication rests with the Editorial Board. Opinions expressed in columns or letters are not necessarily the views of the editors or of Saint Leo College. Editorials appearing in the *Monarch* are published with the express consent of a majority of the Editorial Board.

All Letters to the Editor must be typed, double-spaced, one side on a page and contain a maximum of 250 words. All letters must be signed and include an address and telephone number for verification purposes. Unsigned letters will not be published but names may be withheld upon request. Due to limited space, all letter may not be printed. The *Monarch* reserves the right to edit letters. The opinions expressed in letters are those of the author.

Please submit letters to the *Monarch* Office, room 238 in Saint Edward Hall or to the Office of Public Affairs, room 7 in Saint Francis Hall the Monday ten days prior to publication.



Eco-Corner



By Kimberly Weissman
News Editor

With the unavoidable, overpowering messages of "Recycle" and "Save the World" plastered everywhere around us, the environmental issues should without a doubt be a big concern to every individual who plans to live on the planet for the rest of his lifetime. This statement may seem a bit strong but the longer society continues to ignore the signs that our planet is being destroyed unnecessarily by pollution, waste, and other harmful substances, the greater risk we involve ourselves in creating a shallow tomorrow.

Everyone can take part in preserving the environment and here are ten easy steps that can easily be incorporated into one's life without taking much effort or causing a major disturbance:

1. Turn off water while brushing teeth, shaving, or washing dishes. 2. Wash car

with a bucket rather than a hose.

3. Buy recycled products when possible.

4. Use both sides of paper.

5. Don't litter.

6. Save newspapers for recycling efforts.

7. Avoid aerosol sprays. (especially hair-spray queens!)

8. Look for "biodegradable" on the label of soaps, shampoos, and cleaners.

9. Microwave ovens are energy efficient for cooking.

10. Don't trash belongings in good condition; give them to charity or friends.

Saving the environment is a group effort that must be shared by everyone in this world. How hard is it to not litter, recycle paper goods and bottles, conserve water, and other small tasks? It is the responsibility of each person to incorporate these small environmental tips into his or her routine. Remember, saving our world begins with you.

Kiwanis member aids Circle K Brain Bowl held at Saint Leo

By Kimberly Weissman
News Editor

Circle K International always takes the opportunity to interact with Kiwanis, a service organization one step up from C.K.I. on an adult level, as much as possible. It was with great pleasure to learn that a new member of Kiwanis was working right here on campus.

Norman Carey, a staff member in the computer lab in the library, has offered a lot to the Saint Leo Circle K International, especially when it came to producing the "#1 in the State of Florida" newsletters. Mr. Carey decided to get involved with Kiwanis last October. He was introduced to the organization by Roy Hardy, a Kiwanis in Dade City and a once Governor of Circle K for the entire

state of Florida. Mr. Carey has enjoyed his experiences with Kiwanis thus far and looks forward to the opportunities that lie ahead.

When it came to producing the Circle K newsletters, Mr. Carey used a "headline maker" which created various headlines in different writing styles. The newsletters, therefore, appeared much more neat and professional, not to mention winning the #1 award at the annual District Convention.

Circle K hopes to continue its close bond with Kiwanis and work together again on local projects, especially the nursing home in Dade City. If Saint Leo has something to be proud of, without a doubt it should be the dedication and accomplishments of Circle K International.

By Thomas Turcotte
Editor

The Saint Leo College Delta Nu Chapter of the Delta Epsilon Sigma National Student Honor Society held its 12th annual Pasco County Brain Bowl March 12, 1993. Ten public high schools from the county competed for admission into the state tournament. Hudson High School took first place, defeating Zephyrhills High School by a slim margin.

Each team is made up of four competitors and two alternates. The teams play seven matches during the day. They are asked questions from 12 different academic fields. By answering the questions correctly, they receive points which they accumulate throughout the seven rounds. The winner is the team with the most points at the end of the tournament.

The Honor Society would like to recognize and thank several individuals for their assistance. Dr. Hudson Reynolds asked questions in American government; Dr. Mark Newton asked questions in American literature; Mr. Joseph Geiger asked questions in art; Dr. George Dooris asked questions in biological science; Mr. Chuck Fisk asked questions in current events; Ms. Maura Snyder asked questions in English literature; Sister Dorothy Neuhofer asked geography questions; Mr. Kurt Van Wilt asked logical fallacies; Dr. Wright asked questions in the field of mathematics; Mrs. Prema Adishes asked music questions; Mr. Carl Miller asked questions from the field of physical sciences; and Mr. David Frankel was the moderator for the event. Plant Operations and the library's audio visual department also assisted in setting up the event.

Faculty present artwork at event

By Kimberly Weissman
News Editor

The Faculty Art Show was held on February 23 in the art studio, located adjacent to the theatre. The art show included the works of four faculty members on campus: Lynn McNeil, a part-time teacher with a degree in working with graphics, photography, and aesthetics; Scotty McGee, whose main interest includes pen and ink drawing. Karen Phillips, specialization with water and floral colors, and Joe Geiger, who has thirty years experience in teaching art, print-making, sculpting, and painting.

The Faculty Art Show, which made its same debut on the night of the Saint Leo production, *The Good Doctor*, entertained a variety of faculty, staff, students,

and members of the local community during the intermission of the play. Also, members of "Friends of Art," a group whose members take special interest in the art, music, and theatre productions at Saint Leo College, enjoyed the opportunity to view the faculty's latest creations.

All artists were on hand to answer questions and discuss the specifics of their art. Each piece of work had its price value listed beneath it or could be easily obtained by contacting the artist personally.

During the recent Spring Concert, the Student Art Show followed with its debut in the art studio. The students' art work was very impressive and allowed the artists to explicit creativity and share an abundance of talent in one room.

KAYE

Continued from page 3

conference in Division II, and served as its first commissioner. In 1980 he stepped down as basketball coach to devote full time to athletic director (a position he already held as well as chairman of physical education).

In 1992 he stepped down as athletic director to take on the position of Director of Institutional Advancement, the fundraising office for Saint Leo. He also agreed to temporarily return to the position of basketball coach at request of Monsignor Frank M. Mouch, college president, based on the positive input he had received from alumni Kaye had coached.

Did his resignation in early March have anything to do with this incident? Not even remotely. He resigned as basketball coach to devote full time to fundraising. He has had such tremendous success this year in increasing the private support to the College from alumni that he felt he should not dilute his efforts by trying to handle two full-time jobs and do justice to both of them.

And the basketball team? They are your friends and classmates who played their hearts out in a frustrating season and never wavered in their dedication to the program or the school. In any and all situations they have carried the banner of school well and made us proud of their efforts. Three of the players - Jason Sartor, Joey Brauer and Chris Skyers - received All-Conference Honorable Mention from the Sunshine State Conference.

They would like to get on with their lives and their college careers, putting this all behind them. It has been an un-

necessary distraction created by a reporter with front page headlines in his mind. No one has been more supportive of Saint Leo or distressed at the story than the players.

There are two important things to remember in all of this: 1. the media frequently make the news, not report it; 2. we have something very special here at Saint Leo and it was never more clear than last Friday as we found ourselves in the eye of the storm.

Whatever reaction the media expected from Saint Leo when they printed this non-story, I'm sure it was not the one they got. As I criss-crossed the campus many times on Friday, several people stopped me to talk. It was evident that everyone - students, faculty, staff - had the same feeling. Saint Leo is a united community, a family, and there was a clear sense of outrage that someone had dared to attack the family.

Seldom have I seen so many people independently bond together to protect that which means so much to them. And for many it was perhaps a revelation of just how important Saint Leo is to them and what a strong sense of attachment they have.

We promote our College as a place with a strong sense of family, and stress that as a part of our uniqueness. The incidents of last week certainly underscored the reality of that feeling.

We must not lose sight of the fact that in these times of change and uncertainty this strong sense of family overrides everything else, uniting us in a common bond.

How many other institutions can say the same?

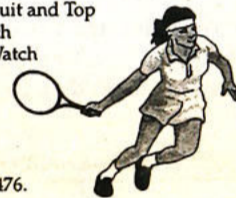
THE WOMEN'S ASSOCIATION OF SAINT LEO COLLEGE IS SPONSORING A DRAWING



- 1st Prize: Prince Raquet-used and autographed by Jennifer Capriati, tennis pro, U.S. Olympic Gold Medalist
- 2nd Prize: Jennifer Capriati's Tennis Warm-up Suit and Top
- 3rd Prize: Saint Leo College Men's Quartz Watch
- 4th Prize: Saint Leo College Women's Quartz Watch

Date: Wednesday, April 14, 1993 at noon
Place: Duncan Lounge, Saint Leo College

Tickets: \$1.00/each or \$5.00 for six tickets
For tickets call 904-588-8261 or 588-8476.



All proceeds go to the
Hazel Whitman Scholarship Fund
for students with unmet financial needs to study at Saint Leo College
Support a worthy cause!

Winners will be chosen by a random drawing.
All entries must be received by April 13, 1993.
Winners will be notified. Need not be present to win.
All prizes are on display in The Cannon Memorial Library, Saint Leo College.

Enclosed is my check or money order for the tickets made payable to Saint Leo College.

Name _____ # tickets _____
Address _____ Apt. # _____
City _____ State _____ Zip _____
Home phone _____ Business phone _____

Include name, address and phone number for each ticket on a separate paper with the check or money order.
Send order to: Women's Association of Saint Leo College, P.O. Box 2096, Saint Leo, FL 33574.

DON'S TOWING AND AUTO SALVAGE 24 HOUR TOWING

Engines • Transmissions • Tires • Body Parts

Mechanic on Duty

OPEN 7 DAYS

4175 Pasco Road

San Antonio, FL 33575

904 - 588 - 3828

We accept Checks, VISA and Mastercard



IN FOCUS

SLC Journal

Special to the Monarch
By Thamir Kaddouri

I would like to take a few minutes to clarify the misconception of a recent editorial submitted to the Monarch that has unjustly criticized the Student Leadership Coalition.

When the merger of the Student Government Association and the College Union Board had been completed we had high expectations for increasing Senate involvement. Today our aspirations have become reality. After the revamping of our Senate and Executive Board policies we have increased the Senates involvement with issues that directly effect the students. A perfect example of this is apparent in our committee structure. The majority of each committee is composed of senators who address issues regarding the disbursement of allocations, residential life & concerns, environmental issues, college services, and events that are sponsored on campus.

Mr. Turcotte's article stated that the Senate "cannot effectively represent the student body unless their role and powers are increased," but he previously stated in his editorial that "the current Senate, with the exception of a few, is the most unenthusiastic group of individuals ever assembled in one place." The question at hand, Mr. Turcotte, is if you are among what you consider an "unenthusiastic Senate" then why would you want to empower them with creating new ideas and legislation? How can you realistically say that "the Executive Board's purpose should be to organize and implement the ideas submitted by the Senate" when you obviously lack confidence in your fellow senators? Why would you

want to remove a dedicated and innovative Executive Board that is familiar with the legislation? Would you consider that a prudent step? Most importantly, would it be beneficial to the students? My answer is NO!

In my opinion the Executive Board and the Senate should be "one." Ultimately both of these bodies act on behalf of the students. The Executive Board proposes legislation to the Senate and, in turn, the Senate can approve the legislation or "veto" it. The Senate may exercise its right to propose new legislation to the Executive Board. The Senate and the Executive Board both act as a balance of powers.

I strongly disagree with your information regarding the Executive Board and Senate relationship. As president of the Student Leadership Coalition, and on behalf of the Executive Board, I can assure you that at no time did we consider the removal of Senate responsibilities, and you have wrongfully assumed that "the Executive Board has created the policies and ideas of the Student Leadership Coalition because the Senate has not done so in the past."

Once again I will reference your editorial in which you state "The Student Senate, unlike the U.S. Senate, never initiates anything." You continue by saying, "All they are is a stamp of approval. The Executive Board takes the Senate for granted and rarely tries to work with them." I would like to stop here and address this outrageous accusation.

The Executive Board has never taken the Senate for granted, in fact, we have revised past policies to insure that the senators play a vital role in advocating the needs of the students. We have also

asked for your input regarding the future renovations for the student center. I would like to cite the Senate minutes of March 1, 1993, in which we addressed the Senate regarding what awards had been proposed for the Student Leadership Coalition banquet and the floor was opened for suggestions. If we refer to the Senate minutes of February 22, 1993, I addressed the senate regarding the proposed constitution and job duties for the Student Leadership Coalition. I specifically stated that "each of these documents will be available for your(the Senate) viewing and input."

You continued on by saying, "The Executive Board submits legislation to the Senate, and the Senate gives its approval, which is nothing but a formality." STOP! I think we need to address this too. The Executive Board is composed of officers that are elected annually and receive a scholarship for their positions. One of the Student Leadership Coalition Executive Board's duties is to address issues that effect the students, and most importantly, to implement positive legislation that is beneficial to the students and Saint Leo College as a whole.

In another passage from this editorial you stated, "The majority of the Executive Board at SLC meetings informs the Senate of issues that have already been decided at Executive Board meetings." If you refer to the previous paragraph you will see that the author of the editorial has contradicted himself. The reason for the contradictions are quite simple. The Executive Board does make decisions on its own, but the Senate is and always will be essential in the approval of the Executive Board legislation.

As president of the Student Leader-

ship Coalition I will continue to address legitimate and plausible points of any criticism, but what I will refuse to do is to allow myself as well as this organization, the Student Leadership Coalition, to be ridiculed by a misinformed person. I can recall when I first confronted Mr Turcotte with this editorial I asked him whether or not he knew the answers to "the Student Leadership Coalitions problems." If I recall you said that "it's not my job."

You're right, it isn't. But I think that Mr. Turcotte's comments should have been directed to the Senate Caucus. In the future he could take a more proactive role by advocating his concerns and suggestions at a proper place (ie. SENATE MEETINGS). If he and other senators would do this it would insure the necessary checks and balances that Mr. Turcotte feels has been overlooked. One thing I don't understand is why the author of this editorial did not approach the Senate when in fact he is a so called "active senator." It is difficult for me to place him into any of his three proposed areas: "the people who don't care about their responsibilities," "the second area are those that use their position for their own self advancement", and last but not least are "the few individuals that are both motivated and sincere in helping the organization..." I think the answer to my dilemma lies to deep for words. The ultimate reply I can make to this editorial is that actions speak louder than words.

THE ELECTIONS ARE APRIL SEVENTH.

In conclusion to your dilapidated editorial I will leave you with this to remember. The Student Leadership Coalition is taking a big step, and I assure you that together we can make a difference.

Career Corner

To help all students get ready for their job searches, career development videos will be shown on SLC TV Channel 57 throughout the rest of the semester. The following is the schedule for the next week.

APRIL 5, 6:00 pm "EFFECTIVE INTERVIEWING TECHNIQUES"

APRIL 8, 7:00 pm "THE FEDERAL GOVERNMENT: A WINNING CHOICE"

INTERVIEW TIPS Whether you are a senior interviewing for a professional job, or a freshman interviewing for summer employment, here are a few tips to remember.

- Show enthusiasm
- Know when the interview is over
- Wait for the interviewer to offer you a seat before you sit down
- Keep a focus on your strengths
- Avoid discussing personal problems
- Answer each question completely
- Be conscious of your body language
- Use the power of your personality to impress

JOB VACANCIES

CAMPAIGN COORDINATOR: Development Department. Travel thru Dade, Broward and Palm Beach (FL) counties. Requires fundraising experience, knowledge of PR, ability to work on several projects concurrently and work under pressure. Resume to Kathy Kelly, Director of Human Resources, United

Cerebral Palsy Association of Miami, 1411 NW 14th Avenue, Miami, FL 33125

WRITER/EDITOR: Write/edit ad copy on contract. Requires minimum 1 year news writing experience. Resume to Andrew Nikovitz, Journal Newspapers Inc, 2710 Prosperity Avenue, Fairfax, VA 22034


STUDENT NEEDED: To stay with elderly woman in Dade City. Woman is not bed-ridden just needs a little help. Compensation includes free rent living at her home. Please call Mrs. Virginia Best at her home at 521-1651 or at Edwinola Nursing Center at 567-5896 to discuss opportunity.

SUMMER JOBS

CAMP THUNDERBIRD: Apopka FL Positions available to care for developmentally disabled adults and children. For more information come to the Career Development Center or call 407-889-8088.

CAMP PINNACLE: Hendersonville, NCA private camp for boys between the ages of 7 and 16. Positions available. For more information come to the Career Development Center or call 704- 693-9165.

CAMP KEYSTONE: Odessa, FL A camp for boys and girls between the ages of 5 and 16. Positions available. For more information come to the Career Development Center or call 813-920-2921.



You've Got A Head Start
On A Healthy Career


**Bouvé College of
Pharmacy and
Health Sciences**

offers Post-Baccalaureate Certificate Programs such as:

- Health Information Administration
- Medical Laboratory Science
- Respiratory Therapy

Whether you're receiving or anticipating your degree, you have a head start on a highly rewarding career in the Allied Health Professions. This expanding field offers personal, professional and financial growth in a variety of exciting areas — and Northeastern University's Post-Baccalaureate Certificate Programs provide both the classroom and clinical experience you need to succeed.

Call (617) 437-3321 and explore the possibilities with us now! Bouvé College of Pharmacy and Health Sciences, 134 Mugar Life Science Building, Northeastern University, Boston, MA 02115. An Equal Opportunity/Affirmative Action, Title IX University.

 **Northeastern University**

Riley expresses views on education

By Kimberly Weissman
News Editor

Former Governor of South Carolina Richard Riley, who had been serving as advisor to President Bill Clinton, has pledged to promote greater access for students to America's colleges and universities and link two issues important to today's youth: education and national service.

"We must establish a new covenant which gives both greater access to postsecondary students for those who have earned an opportunity to go on, and also provide incentives for young adults to serve their community and their nation," said Riley at a confirmation hearing before the Senate Labor and Human Resources Committee.

As governor from 1978 to 1986, Riley implemented a number of education

reforms, including higher academic standards, improved teacher training and compensation and a renewed emphasis on basic skills. As a result of these policies, a recent study showed an increase in both Scholastic Aptitude Test scores and the number of high school students going on to college.

On other issues, Riley said he favors expanding Pell Grants for needy students.

Given the government's budget deficit, he acknowledged, however, that increases will be hard to afford.

Riley also spoke highly of being in favor for early education, which gives disadvantaged children early access to education, providing them with a higher chance for a promising future. Finally, a main concern he addressed was a greater emphasis on parental involvement in education.

Accounting is reexamined

Special to the Monarch

The majority of students who have taken accounting in high school say that accounting is boring. Nevertheless, the accounting course that most high schools teach is book-keeping, which records business transactions. Accounting, as a whole, is more-in-depth and challenging.

Accounting is the process of identifying, measuring, and communicating economic information to permit informed judgments and decisions. The value of accounting information is for decision-making and effective planning by management and usefulness of accounting information by groups outside the firm, including investors, creditors, government agencies, etc. Accounting also includes the analysis of data, the testing of their

validity and relevance, and the interpretation and communication of the resulting information to intended users. Moreover, the accounting process is not as precise or predictable as people often think. In fact, it involves assumptions and estimates. It requires not only technical knowledge and skill, but also judgment, perception and objectivity. Furthermore, there is a misconception that excellent math skills are needed in order to be good in accounting. That is not necessarily true. Actually, it requires logical and analytical ability rather than applying formulas and equations.

Overall, accounting is like putting pieces of a puzzle together into a meaningful picture. It has become an essential part of the business world today.

Survey attempts to create student model

By Thomas Turcotte
Editor

Recently, the office of Enrollment Management has been preparing a survey for students in an effort "to create a profile of the students that attend Saint Leo College" explained Dr. Maribeth Durst, associate vice-president for academic affairs. Through this student profile, it is hoped that the needs of the students can be more easily determined and met.

The freshmen were given surveys when they arrived on campus in order to deter-

mine their expectations. This week surveys were also given to approximately one quarter of the freshmen, sophomores and juniors. All seniors will be given a senior exit survey as well. The surveys have been given to students of every class in an attempt to gain a "complete picture of the student body". The students surveyed, within each class, were selected randomly.

The survey questions cover a wide variety of topics. The first section centers on how students perceive their experience at Saint Leo College. Another section is used to question the student about personal goals and campus activities. Residential life, faculty and the Catholic community are also covered in the survey.



Sincerely Yours,

Dear Sincerely Yours,

Where can I go if I have a concern about my classes? Every time I try and select a specific course, I find that its offered the following semester.

-Five Year Plan

Dear Five Year Plan,

To avoid "wasted" time spent on classes you don't particularly need, the best option is to consult your advisor. As a mentor, he/she will be able to help you choose the right classes for your major during the appropriate semester its offered. Make an appointment today!

-Sincerely Yours

Dear Sincerely Yours,

Is it advised to take Summer Session here at Saint Leo, or is that for students who want to get ahead and graduate early?

-Inquiring Mind

Dear Inquiring Mind,

The majority of students who usually attend Summer Session are those who need to take specific classes because they either failed or missed them throughout the semester. The other students who attend would like to get ahead by taking more classes, consisting of their desired major or electives, and either graduate early or have a "solid" degree at the end of four years.

-Sincerely Yours

According to Kim...

By Kimberly Weissman
News Editor

The month of April has finally arrived, and the students are without a doubt becoming restless for the long awaited summer. Besides being the month which concludes the semester, April has many special days during its four week span. Arbor Day is a day for planting trees, Easter nearly always falls in April and brings with it Palm Sunday, Maundy Thursday, and Good Friday and the Jewish religious Passover often arrives early in April.

Oh, and how can we forget the infamous April Fool's Day, which brings about its tradition of pranks the first day of the month. No one is quite sure how this custom began, but a common theory is

that it started in France in the 1500's, when the calendar was changed to make the year begin on January 1.

Before that time, the New Year celebration had started on March 25 and ended on April 1, when people gave New Year's gifts. When New Year's Day was moved to January 1, some people still gave presents on April 1 as a joke. The custom of playing jokes on friends and relatives on April 1 became popular in France and spread to other countries.

Of course everyone survives this well-known tradition, even if he must endure sporadic childish jokes throughout a 24-hour period. (if your friends are faithfully committed to fulfilling the custom.) For many, the embarrassment of being the victim of the joke known as an April Fool, wears off soon.

Happy Birthday,
Mom!!!
Love, Glenn

**GREEKS & CLUBS
RAISE A COOL
\$1,000.00
IN JUST ONE WEEK!**
PLUS \$1000 FOR THE
MEMBER WHO CALLS!
And a FREE IGLOO
COOLER if you qualify.
Call 1-800-932-0528, Ext. 65.

<p>BUY ONE GET ONE FOR 59¢ 6" SUBS</p> <p>Buy any regular 6" sub and get one of equal or lesser value for 59¢ with the purchase of any drink.</p> <p>SUBWAY</p> <p>Not valid with any other offers. At participating stores. Limit one coupon per customer/visit. Buy up to 4.</p> <p>6" SUBS ONLY \$1.50</p> <p>Buy any regular 6" sub for only \$1.50 with the purchase of any drink.</p> <p>SUBWAY</p> <p>Not valid with any other offers. At participating stores. Limit one coupon per customer/visit. Buy up to 4.</p> <p>ZEPHYRHILLS at La Plaza 5406A Hwy. 301 (813) 782-1381</p>	<p>BUY ONE GET ONE FOR 99¢ FOOTLONG SUBS</p> <p>Buy any regular footlong sub and get one of equal or lesser value for 99¢ with the purchase of any drink.</p> <p>SUBWAY</p> <p>Not valid with any other offers. At participating stores. Limit one coupon per customer/visit. Buy up to 4.</p> <p>FOOTLONG SUBS ONLY \$3.00</p> <p>Buy any regular footlong sub for only \$3.00 with the purchase of any drink.</p> <p>SUBWAY</p> <p>Not valid with any other offers. At participating stores. Limit one coupon per customer/visit. Buy up to 4.</p> <p>STUDENTS Stop In For A 10% DISCOUNT CARD</p>
<p>DADE CITY at The Landings 2019 US Hwy. 301 (904) 521-7000</p>	



SRD Automotive

On Campus Repair Free Towing on Campus

- * Major and Minor Repairs
- * General Maintenance
- * Mufflers and Exhaust Systems
- * Oil Change - \$16.95

Brake Work Oil Changes Tune ups

\$5 Service Call on Campus

8 a.m. - 5 p.m.

Monday - Friday

(904) 588 - 3291



**For Fast
Hot Delivery
CALL**

TRAVERSE CITY

1121 East Front Street
Traverse City, MI 49684
Phone
(616) 941-1767

DADE CITY

426 N. 7th Street
Dade City, FL 33525
Phone
(904) 567-9424

CLERMONT

1041 W. Hwy. 50
Clermont, FL 32711
Phone
(904) 394-8595

HOURS

MON. - SAT: 10:00 a.m. - 1:00 a.m.
SUNDAY: 12:00 Noon - 1:00 a.m.

GJ's PIZZA

Buy One Pizza - Get One Free!

You also receive a quart of Pepsi with each Pizza Order

	Sm.	Med.	Lg.
Cheese	5.15	7.10	9.55
Cheese & One Item	6.10	8.15	10.65
Cheese & Two Items	6.90	9.10	11.75
Cheese & Three Items	7.70	9.95	12.85
Cheese & Four Items	8.50	11.00	13.95
GJ's Deluxe Special	9.35	11.55	14.45
Special Orders - 5 or More Items	.80 ea.	.90 ea.	1.00 ea.
Extra Sauce			Free
Vegetarian Special	9.95	12.05	14.95
Chef's Salad			2.95
Large Pizza Slice			1.25

BEVERAGES

Items Available On GJ's Pizza	M	QT
Pepperoni	.50	.95
Mushrooms		
Bacon		
Green Peppers		
Green Olives		
Anchovies		
Ham		
Onions		
Ground Beef		
Black Olives		
Italian Sausage		
Pepsi Cola		
Diet Pepsi		
Mountain Dew		
Root Beer		

GJ's Subs 30 Delicious Varieties

"HOT FROM THE GRILL"

	8"	12"
GJ's Original Sub Italian Meats & Cheese	3.20	4.75
Jumbo Original GJ's Original with Extra Meat & Cheese	3.80	5.65
Salami Sub & Cheese	3.25	4.90
Pizza Sub Pizza Sauce, Cheese, Pepperoni, & Mushrooms	3.25	4.90
Italian Sausage And Melted Cheese	3.25	4.90
Roast Beef And Melted Cheese	3.25	4.90
GJ's Deluxe Supreme Ham, Salami, Pepperoni, Cheese, Mushrooms, & Green Peppers	4.25	5.95
GJ's Vegetarian Special Any Combination of Mushrooms, Sweet Peppers, Black Olives, Cheese	2.90	4.30

Steak Subs

Featuring USDA Choice
New York Strip Steak

	8"	12"
Steak & Cheese Sliced Wafer Thin with Melted Cheese	3.40	5.10
Jumbo Steak & Cheese Extra Meat & Cheese	3.95	5.95
Mushroom Steak Tender Juicy Steak & Mushrooms	3.40	5.10
Mushroom Steak & Cheese Add Melted Cheese	3.65	5.45
Pepper Steak & Cheese Diced Sweet Peppers & Steak	3.65	5.45
Pizza Steak & Cheese Steak, Pizza Sauce, Melted Cheese	3.60	5.35

	8"	12"
Pizza Steak & Mushrooms Steak, Pizza Sauce, Cheese, Mushrooms	3.70	5.55
Jumbo Pizza Steak Extra Meat & Cheese	4.05	6.10
GJ's Steak Special Mushrooms, Sweet Peppers, Pizza Sauce, & Cheese	3.80	5.65

BURGER SUBS

World's Longest Cheeseburger Ground Round with Melted Cheese	2.95	4.55
Jumbo Cheeseburger Extra Meat & Cheese	3.65	5.45
Pepperburger & Cheese Diced Sweet Pepper & Ground Round	3.25	4.90
Pizzaburger & Cheese Ground Round & Pizza Sauce	3.15	4.70
Pizzaburger & Mushrooms Add Delicious Mushrooms	3.35	5.05
Jumbo Pizzaburger Extra Meat & Cheese	3.70	5.45
Mushroomburger & Cheese Add Mushrooms & Melted Cheese	3.25	4.90
GJ's Burger Special Mushrooms, Green Peppers, Pizza Sauce, & Cheese	3.80	5.65
Bacon Burger & Cheese	3.15	4.65

HAM SUBS

Ham & Cheese Sweet Ham & Cheese	3.25	4.90
Jumbo Ham & Cheese Extra Ham & Cheese	3.80	5.65
Fried Ham & Cheese Melted Cheese & Fried Ham	3.25	4.90
Jumbo Fried Ham & Cheese Extra Ham & Cheese	3.80	5.65
Additional Items	.45	.65

All Submarines include • Crispy Fresh Lettuce • Red Ripe Tomatoes • Chopped Onions • and GJ's Own Sauce