



# MONARCH

Volume LXXVII Issue 11

Student Publication of Saint Leo College

April 10, 1992

### Inside This Edition . . .

Letters to the Editor, p. 2

Plans for renovations, p. 3

Trivia, Sincerely Yours, p. 6

Intramurals wind down, p. 7

## Several changes occur at SLC

By Michelle G. Berens  
Editor

Several administrative changes were recently announced at Saint Leo College, with many of them effecting the Department of Intercollegiate Athletics. The announcements were made by Dr. Daniel Hoeber, vice president for academic affairs.

Norman D. Kaye stepped down as Athletic Director and was appointed to the newly created position of Director of Development. He will serve as the college's major fundraiser. Additionally,

Kaye will again act as men's basketball coach, a position he held from 1969-1980. Kaye was previously chairman of physical education.

Thomas Phillips stepped down as men's basketball coach but will continue instructing physical education and sports management.

Phillips commented, "I felt that my time to make the program the way I wanted was cut short. If I had another year or two, I feel I could have possibly turned the program around, but I didn't get

the chance. A person has two choices; to either accept the circumstances and go on or to leave. And I'm not going anywhere."

According to Hoeber, Kaye offered John Swart, previously coach of women's basketball, the position of assistant men's basketball coach. Swart accepted the proposal. Swart will remain as director of intramural sports and as National Collegiate Athletic Association (NCAA) compliance officer of SLC. A new women's basketball coach has not yet been selected.

Mike Madagan was released from his contract as assistant coach of men's basketball.

John Schaly was named director of intercollegiate athletics on March 25. He will also continue as coach of men's baseball.

Prior to the restructuring of the athletic department, an academic reorganization took place. The division of physical education has been incorporated into the department of Education. The Department of Intercollegiate Athletics will function as a separate unit.

## Roderick undergoes major improvements

By Michelle G. Berens  
Editor

An anonymous donor has contributed nearly \$25,000 to begin the renovation of Roderick residential hall. This contribution not only helped to start the needed renovations, but it also allowed construction to begin on two new "showcase quads". Additionally, students, faculty, staff, administrators and people from the surrounding communities were asked to take part in the May 8 "Saint Leo College Roller Derby" to further renovate Roderick by painting the residential hall.

Sister Geraldine Warthling, O.S.F., Nancy Pond and the Student Life Committee discussed ideas concerning the renovation of Roderick. Pond was in the process of writing a proposal when the money was contributed.

It was decided shortly after that the two "showcase quads" were to be built on the west end of the second floor. The ladies living on the west end of first floor Roderick were asked by Warthling to relocate to the east end of the second floor. The water and electricity were to be turned off while the fabrication of the two quads was taking place. The students were given several days to change their living quarters and had the option to obtain as-

sistance from Plant Operations if they chose.

Each "showcase quad" will consist of two bedrooms with four students sharing a living room and a bathroom. Warthling said that there will be a sink, storage and huge closets in each room. She also believes the new quads will be more spacious than the remaining quads in Roderick.

Various units in Saddlebrook Golf and Tennis Resort are being remodeled. The furniture from these units, which will be placed in Roderick, is being presented to SLC by owner Tom Dempsey, also a member of the SLC Board of Trustees. The "showcase quads," on the other hand, will have new oak bunk beds.

Although the entire building cannot be reconstructed, volunteers will be painting interior walls during the "Saint Leo College Roller Derby" sponsored by Campus Ministry on Friday, May 8, from 1-7 p.m.

There will be free prizes (including "Roller Derby" T-shirts and hats), snacks, iced tea and lemonade throughout the day. The pool will be opened with lifeguards on duty for children. A live band will entertain the volunteers. Stereo equipment will be in use the remainder of the day. A donated dinner will be served around 7 p.m.

Warthling believes this "Roller

Derby" is not only going to be like a party, but it will also be a community builder.

Plant Operations will prepare the building for the volunteers to paint. Warthling said that Plant Operations was willing to put as-

sisting with the renovations on their priority list rather than waiting for the issue to surface. The paint supplies will be provided as part of the 5-year painting cycle the College has with Marriott.

## Divisions restructuring

By Thomas Turcotte  
Associate Editor

As of July 1st, the current academic divisions will be restructured. They will be 3 academic divisions instead of the current 6. The following will be the 3 new academic divisions.

Liberal Arts and Sciences will contain Art, Biology, Chemistry, Dance, Developmental Studies, Economics, English, Foreign Language, History, International Studies, Mathematics, Music, Philosophy, Political Science, Psychology, Religious Studies, Sociology and Theatre.

Business Administration will contain Accounting, Business Administration, Computer Info Services, Finance, Human Resources Admin., Management and Marketing.

Education Human Services will contain Criminology, Elementary Ed., Elementary Ed./Early Childhood, Health Care Admin., Health Services Mgt., Medical Technology, Mental Retardation, Physical Education, Pre-Law, Public Administration, Restaurant and Hotel Mgt., Secondary Education, Social Work, Sports Management and Technology Management.

There will no longer be division chair people. Instead, there will be a dean for each division. The Deans will be twelve month administrators. They will not have teaching responsibilities. Dr. Travis will become Dean of the Division of Business Administration. The other two deans will be selected at a later date. The college will select applications from within the College only.

There are several reasons for the restructuring process. For one, there is not enough students or faculty to support 6 academic divisions. In addition, the departments were redistributed to fulfill a certain rationale. Liberal Arts and Sciences contain areas that are primarily used for Basic Studies or to provide required courses for other majors. Business Administration contains courses that can be applied to any career in the business field. Finally, Education Human Services are areas that dictate specific career choices.

Dr. Hoeber, Vice President of Academic Affairs, commented that the faculty had been very receptive toward the restructuring. He hopes that "each division takes on a vision for itself."

## Circle K achieves honors

Kimberly Weissman  
News Editor

On the weekend of March 13th through the 15th, Circle K set off to Orlando for their annual District Convention. With nineteen members in attendance,

the Circle K'ers were lodged at the Hilton.

Saint Leo is one of the strongest of the clubs in Florida, which received nine awards. They are as follows: Third Place Total Club Achievement, Third Place Single Service Project, First Place Club of the Year, First Place Outstanding President, Second Place Outstanding Vice-President, Third Place Outstanding Secretary, First Place Outstanding Member, and the Governor's Club Award, which is an award for having over 45 members.

The current President of Circle K, Brenda Hiller, won the office of Lieutenant Governor, where she will be in charge of the Suncoast and Sunbelt Division. She looks forward to governing seven clubs and comments, "It will be a lot of hard work but I'm ready for all the new challenges that lie ahead."

### Index

Editorial	.....2
On Campus	.....3
Spotlight	.....4
Of Interest	.....5
Leisure	.....6
Sports	.....7



Ami Sallee and Mark Boriosi work on a duet they will be performing as part of the murder, mystery, musical *Something's Afoot*.



# EDITORIAL

## Is vandalism a real concern at SLC?

By Glenn Ladwig  
Monarch Staff Writer

We have a problem. Upon walking into St. Edwards Hall, late one night, I noticed a security guard apparently standing guard over the first floor stairwell. I asked him what had happened that required his vigilance. He told me that he had to keep the "kids" from writing in the wet plaster of the renovated walls and that he would be there all night. They would put initials, first names, fraternity abbreviations, etc.

I say this is our problem because I am not the only one paying for the security guard and

the time it takes the workman to repair any damage done prior to the strategic placement of the security guard.

Although the vandalism problem at St. Leo is not as obvious as most schools, it is still here. Not only is there a problem with vandalism of school property, but also student property. At a small school, one would think that everyone knows each other and there would be no destruction of an acquaintance's property. Unfortunately, this is not the case. I had a bike locked at the bicycle rack outside Snyder Hall. When I checked on it one morning, I found the front wheel had been bent in the shape of a "U".

Painted on the frame was an insulting statement about a certain fraternity. Sorry guys, wrong bike. I'm not a member of any fraternity.

This editorial is directed more toward the friends of the people responsible for the vandalism, and those witnessing it. If you see someone destroying someone else's property, including the school's, report it to the Security Office. Security is here for the students. Breaking up parties is not their only purpose. When you witness vandalism, think about this: though it may be someone else's property this time, it could just as easily be yours the next time. It could be a costly decision

that you turn your back on.

If your friends are destructive in this way, you might consider choosing a new friend. Vandalism is a matter of morals, just as loyalty is. I would question anyone's loyalty who is lacking in the morals department.

A common excuse for being destructive is drunkenness. If you know you act this way when drunk and drink anyway, there is no difference between you and the sober, malicious vandal.

We should have respect for other people and their property. I also think tuition is high enough as it is. Let's not increase it because of our irresponsibility.

### Letters to the Editor

This letter is a rebuttal against the February 28th article, "It couldn't be worse, could it?" I have to totally disagree with Mr. Fontane's article. Obviously he doesn't know what he is talking about. He may, but I think he got some students and staff members upset, including me. First off, you don't always have to eat in the McDonald's Cafeteria. Have you ever heard of eating out; ever hear of pizza take out? No one is forcing you to eat the cafeteria's food. If you don't like what you see, then don't eat it! And also, "What you see, is what you get!"

How could you say that the

staff is rude?!?! I think not, Boy-ee! I always greet the staff with a smile and a hello, sometimes I even joke with them. Also, I have seen kids cut in front of other people to get seconds, yet they wait patiently for their food. You don't always have to go to the end of the line. Basically, if you are respectful, you will receive respect in return.

In what you have said about the cafeteria itself, disgusts me! When I stand in line to get my meal, think about why the trays are wet. It's due to the hard working staff who have to clean up our slop on our trays. What else do you want? Everything put on a

silver platter? I think not!

The food, as you say, is not to your taste; again, "Eat or Die!" I think the food is fine and sometimes I get home sick, wishing for my mom's cooking. But at least we get fed. The food is totally better than the Sunday meals at Marmion Cafeteria. I heard that if you want to have something made from home, you can

turn in the recipe to the Marriott staff and they will make it a night meal.

So, I am done and am waiting for any replies. The Marriott staff is the best group of hard workers who devote their time to meet our needs. Congratulations! Boy-ee!

J. Jacobson

Dear Editor,

"Those who hold the reins of government should not forget that it is the duty of public authority by appropriate laws and sanctions to defend the lives of the innocent, and this all the more so send those whose lives are endangered and assailed cannot defend themselves. Among them we must mention in the first place infants hidden in the mother's womb. And if the public magistrates not only do not defend them, but by their laws and sanctions betray them to death at the hands of doctors and

others, let them remember that, "God is the judge and Avenger of innocent blood which cries from earth to Heaven."

From the encyclical Casti Conubii, Pope Pries XI, Dec. 31, 1930.

Abortionists kill 3 bodies every minute in our nation. Away they do it is to tear the baby to pieces with a twisting pliers like tool!!

Now is your best chance to help! Join in a for life group or start one! No one can take your place. God bless you.

Mary Rita Crowe

## MONARCH

1989-1990 ASPA First Place with Special Merit  
1989-1990 CPA Second Place with Special Honors  
1988-1989 ASPA First Place Winner

Michelle G. Berens Editor

Thomas Turcotte Associate Editor

Renee Lacerenza  
Copy Editor

Daniel E. Eckert  
Design Editor

Pia Navarro  
Office Manager

Kimberly Weissman  
News Editor

Judith Rochelle  
Advisor

Staff: Peg Hamann, Glenn Ladwig, Joel Murray, Chris O'Malley and Todd Trumport.

All Letters to the Editor must be typed, double-spaced, one side on a page and contain a maximum of 250 words. All letters must be signed and include an address and telephone number for verification purposes. Unsigned letters will not be published but names may be withheld upon request. Due to limited space, all letters may not be printed. The *Monarch* reserves the right to edit letters. The opinions expressed in letters are those of the author.

Please submit letters to the *Monarch* Office (room 7 in Saint Leo Hall) or to the Office of Public Affairs (room 7 in Saint Francis Hall) the Monday (ten days) prior to publication.

Full responsibility for the material that appears in this publication rests with the Editorial Board. Opinions expressed in columns or letters are not necessarily the views of the editors or of Saint Leo College. Editorials appearing in the *Monarch* are published with the express consent of a majority of the Editorial Board.

The *Monarch* is printed biweekly throughout the academic year, except around and during College holidays.

All correspondence with the *Monarch* should be addressed to: The *Monarch*, P.O. Drawer I, Saint Leo, Florida 33574.

### President's Corner

By Msgr. Frank M. Mouch  
President, Saint Leo College

One of the principles of social psychology is that every group tends toward equilibrium and, in a moving world, stagnation. As relationships among the various parties of any organization become known and established, there is a natural tendency to maintain them just as they are. While this provides stability to the group, it also works against changes and adjustments that are required by new situations and conditions.

The way to keep a group moving and avoid stagnation is to introduce new individuals into it and/or new relationships among its members. This is what is currently underway at Saint Leo College. We have been making headway over the past years in developing a better college — and especially every educational institution has an obligation to improve itself, so that it can be successful helping its students to develop. With the arrival of a new vice president for academic affairs and prompted by the necessity of fiscal restraint that is

common across our country today, the institution is planning a reorganization of function and personnel, in order to support a better delivery of the curriculum and campus life.

Since non-change does provide the comfort of stability, proposed changes may seem threatening or worrisome to some people, particularly during the planning process before conclusions are reached and we all know what the future will look like. However, I am confident that the experience and ability of Dr. Hoerber and the recommendations of Mr. Jack Reynolds (a trustee who is offering his services as a consultant for organization and budget management) will assist the college in improving itself without major upset.

As learning and maturing have their difficult moments, we as an institution may well experience some discomfort in the near future, as we are asked to adjust our patterns of functioning and relating to others. Yet, who denies the benefit of being educated and mature? The goal is worth the struggle.



# ON CAMPUS

## Health Fair returns to Saint Leo

By Renee Lacerenza  
Copy Editor

Saint Leo College hosted its 5th annual Health Fair on Wednesday, March 11, in the McDonald Student Center West from 9 a.m. to 3 p.m. The event was free and open to the public.

"In the past it's been mainly for the students," commented Bobbi Sponheim, health services director. "But, by opening it up to the public [the Health Fair] lets other people know about Saint Leo and the [medical] resources available

in the area."

The Health Fair offered students, faculty and the general public the chance to ask professionals for medical advice, take computerized health quizzes, gather information on health care and physical fitness and much more. There was free frozen yogurt donated by Marriott Food Services and free fruit juices donated by Lykes distributors.

Returning volunteers were: the Pasco County Sheriff's Office, H. Lee Moffitt Cancer Center, HRS Pasco County Health Unit, Glen-

beigh Health Sources of Tampa, Parker and Parker Insurance Consultants, Inc. (sponsoring some of the event), Youth and Family Alternatives, Harry Blackstone, D.O., Dolly Hendley Women's Health Resources and Lake House Tang Soo Do, which was represented by Karen Phillips who is an adjunct professor at the College. Hunter Blood Center and Tau Kappa Epsilon fraternity sponsored a blood drive.

Several new volunteer groups participated in the event this

year. Vision Works tested for glaucoma and visual acuity. A representative from Alcoholics Anonymous provided information on the dangers of alcohol abuse. Pasco County Fire Rescue conducted demonstrations of C.P.R. East Pasco Medical Center had "Ask-A-Nurse" and computerized information on health care.

Humana Hospital had a Wellness Center for blood testing. Other participants were Florida Rehabilitation, Inc. and Dr. Sam Rayyes, gynecologist.

## CMG offers fund raising opportunities

By Robert W. Connor, Jr.  
Special To The Monarch

Providing a profit-sharing strategy with undergraduates, the newly formed Collegiate Marketing Group is looking for a few good men and women. Over the next few weeks, CMG will be accepting registration from students who wish to earn money and develop sales skills on a part-time basis during the 1992-93

school year.

Marketing a direct mail order catalog, participating students will earn a 15% commission on orders once they have hand-delivered the catalogs to prospective buyers. CMG has targeted recruiting fraternities and sororities who may wish to incorporate the company's program as a chapter fund raiser. All students are welcome to enroll before the May 15, 1992 deadline

in order to receive catalogs in September. The catalogs will feature appealing, reasonably-priced merchandise that has been selected from a variety of name-brand manufacturers to assure quality and reliability.

Students who would like to join the CMG marketing force should forward a twenty-five dollar check made payable to: The Collegiate Marketing Group. Do not send cash. The enrollment fee

will supply an initial 50 catalogs in September. Send your name and Fall mailing address, along with your registration fee, to: CMG Membership, 8729 Montgomery Avenue, Philadelphia, PA 19118. The Collegiate Marketing Group is a member of both the Direct Marketing Association, Inc., and the Greater Philadelphia Chamber of Commerce. For more information call (800)338-2778.

## Plans begin for Residential Halls renovations

By Thomas Turcotte  
Associate Editor

Saint Edward Hall is currently being remodeled in order to be converted to student-related offices. At the same time, there are plans underway to remodel and improve Roderick Hall for further student living.

Saint Edward Hall is being used to fill numerous space requests on campus. Roderick improvements are stated to compensate for the loss of living space in Saint Eds. When asked whether all of Saint Eds will be closed, John Weicherding, Vice President of Operations, responded, "It's my understanding that they are considering closing it."

These necessary changes are

preceding further important building plans. Weicherding explained there are future plans to build one and eventually two new residential halls. These plans were originally proposed by an architect three or four years ago. The first hall would be built between Lake Jovita and the baseball field. The second hall would be built on the present site of the Plant Operations Building. Plant Operations would be moved as the first dorm was being built, for aesthetical purposes. According to Weicherding, "My dream would be to start it in a year."

Roderick is being renovated first for two primary reasons. First, Roderick is being used as a test to determine what type of living students prefer. If students

seem to enjoy living in Roderick, in the new configuration, then the new dorms will be built with similar living arrangements. Second, cost is an important matter to be considered. The new dorms will cost an estimated \$5 million. However, Roderick will

cost only \$1 million to renovate. Therefore, Roderick will bring about quicker improvements in student living.

Weicherding offered this final comment, "I think it's worth saying again, our number one priority is residential housing."

## New product aids in law

By Donald L. Culver  
Special To The Monarch

With crime on the rise, a much larger number of persons are concerned with their safety in and out of their homes. A sensational new product provides almost instant protection from those who wish to do you harm. At the same time, the product helps law enforcement officials in their search and apprehension of the criminal.

DYEWitness is a small self-contained canister that fits in a pocket or purse. When in danger all that the user does is point and pull the trigger. A 70 lb blast of green dye immediately covers the attacker's face. Vision is temporarily obscured, making it possible for the victim to get away. DYEWitness, invented by a

policeman, is known as the criminal identifier, because the green stain will remain visible on the attacker's face for up to 7 days and will be reactivated with any moisture. This makes it much easier for police to locate, identify and place the perpetrator at the scene and prosecute them.

DYEWitness is NON-TOXIC and causes no permanent damage to the criminal. It starts to take effect as soon as the trigger is pulled. No licence or permit is needed. DYEWitness is not available in stores or over the counter. It may be purchased from Excursion, direct distributor of DYEWitness. Free information may be obtained by writing to: Excursion/DYEWitness, Box 11667, Santa Ana, CA 92711 or call (714)771-9551.

## Persons of the Week

Dr. Lucy Fuchs, associate professor of education, has recently had her article entitled "Gold from the South: Hispanic Literature" reproduced on ERIC (Educational Resources Information Center) microfiche.

Dr. Charles Hale, assistant professor of healthcare administration, recently presented a paper entitled, *Academic Program Level Effects Assessment: A Model*, at the 16th National Conference on Successful College Teaching and Administration. The paper was co-authored by Dr. Marvin T. Travis, professor of management.

Dr. James J. Horgan, professor of history, recently participated in a survey of professional historians on the most significant American women of the 20th century. Historians were asked to list three women in 18 categories. Among his responses, he rated as

the most significant: in television, Joan Ganz Cooney; in art, Peggy Guggenheim; in law, Barbara Jordan; in business, Katherine Graham; in science, Amelia Earhart; and in sports, Mildred "Babe" Didrikson. Overall, he listed as the most significant American women of the 20th century: Eleanor Roosevelt, Betty Friedan, and Katherine Hepburn.

Dr. Maribeth Durst, dean, campus academic programs and Dr. E. Marilyn Schaeffer, chair, division of education, has recently had a book published. The book entitled *A Cultural Analysis of Student Life at a Liberal Arts College*, was published by the Edwin Mellen Press. Edwin Mellen is an international publisher with offices in Lewiston, New York; Ontario, Canada; and, Wales, United Kingdom. The book is a culmination of the year-long anthropological study Drs. Durst and Schaeffer conducted on student culture among Saint Leo College campus students.

### Fallen To Heaven

He saw him fall from off his wing  
No longer a voice that he may sing  
His body lay on the winding path  
Struck down by someone's evil wrath  
Lifted up by the Masters hand  
Once more above the bonds of land  
A flutter of wing and then he died  
The Master bowed his head and cried  
There will be a time early tomorrow  
You'll gnash your teeth in your sorrow  
Just as this bird was ordained to die  
My Father calls me to his side  
With open hand he stood alone  
Not a feather left, no skin, no bone  
The Master walked down the windy path  
He knew these steps to be His last

The Country Poet



# SPOTLIGHT

## SLC students intern in social work

By Charlene D. Vogt  
Special To The Monarch

Seven senior and six junior students in the Saint Leo College social work program are currently representing the College as field interns at Tampa Bay facilities.

Senior Amy Barlow, who is also currently serving as a representative on the executive board of the National Association of Social Workers (NASW), is interning at Tampa General Hospital. Frank Coradini, an intern at the Human Development Center of

the Pasco Drug Treatment Program, is serving as the alternate to NASW.

Other students in the field are: Debra Plant at Youth and Family Alternatives, Dade City; Lucy Duncan in the Hernando County School System; Brenda Hiller at the Tampa Bay AIDS Network; Tom Hall at Florida Baptists Children's Home; and Eileen Rea in the Pasco County School System.

Students are selected by each agency through an interviewing

process. The interviews are conducted as if students were applying for a professional position.

Alan Merson, associate professor of social work at SLC has been in this field for 25 years, supervises the program. The College is certified at the national level by the Council on Social Work Education in Washington, D.C.

Students who earn a BSW have the knowledge and skills which will allow them to work with people in a variety of settings.

Students who go on to earn their masters degrees, academically coined "terminal degree," will be prepared for independent private practice.

"Good social workers can draw a line between their business and personal lives," said Merson. "These students learn discipline in the field as well as develop the qualities of a social worker being committed to the human race by having a kind heart, and wanting to make a difference — under the tutelage of their supervisors."

## SLC representatives assist Special Olympics

By Charlene D. Vogt  
Special To The Monarch

Special education majors at Saint Leo College and members of the SLC student chapter of the Counsel for Exceptional Children under the direction of SLC instructor M. Kathy Heikkila, were invited to assist in the Special Olympics on March 5, at Zephyrhills High School.

Jeannine Krankus is president of the student chapter, Joyce Tamborello is vice president, Patricia Bires is secretary and Stacey Voras is treasurer. There are a total of 35 SLC students participating. Members of the group meet once a month.

The event was sponsored by The Pasco chapter of the Exceptional Student Education (ESE)

program. Twelve hundred mentally and physically disabled students from the area participated in events such as the frisbee toss, tennis ball toss, and track and field exercises. They were assisted at all events by the SLC students.

Sophomores and juniors in the SLC special education program receive experience in the field by working with disabled children.

"These are special kids," said Heikkila, referring to the students. "They must have qualities such as compassion, tolerance, and courage to work with disabilities they have never seen before. Persons interested in special education realize progress is small. It can take months before any rewards could be seen or

felt."

"An ideal candidate sees joy in even the smallest things. Students are key-makers, because their job

is to find the key that unlocks the child's potential. If they can't find the key, they have to make one."

## Easter Mass at Saddlebrook

Kimberly Weissman  
News Editor

This year Msgr. Frank Mouch will again celebrate Easter mass at Saddlebrook Resort in Wesley Chapel.

This is the second year that the resort and the college are collaborating to bring the religious observance to Saddlebrook guests and residents.

Known for its golf and U.S.

training center, Saddlebrook acquires many young talents and trains them until the young stars decide to move on. Last year, more than 300 people attended the Easter Mass.

Tom Dempsey, who is a member of the SLC Board of Trustees and the owner of Saddlebrook Resort, is hosting a coffee reception immediately following the mass.



Sophomore Becky Buller looks over the script for *Something's Afoot* recently during rehearsal. The theatre department is presenting the murder, mystery, musical tonight and Saturday night at 7:30 p.m. and Sunday afternoon at 3 p.m.



The College Union Board and Inter-Fraternity Council took extra precautions to insure that students had a good time at the St. Patrick's Revenge party held last month.



Saint Leo shortstop Sarah Gerald goes up for a throw as Akimi Wang of Barry University reaches second base during a fast pitch softball doubleheader Saturday. The Monarchs will be hosting Spring Arbor College at 1 p.m. Saturday afternoon.



## Career Corner

"Career objective: To obtain job by using bogus resume" was the title of a recent article in the St. Petersburg Times. The article continued stating that recruiters see overblown claims and outright lies creep into resumes more often during tough economic times. Fortune magazine reported that two-thirds of all job applicants lied on their resumes. The National Credit Verification Service says that 25% of the MBA degrees it checks out on resumes are fake. Whether it's pumping up a job title, inventing a degree or stretching the truth, resume fraud is rampant according to the article.

Be honest on your resume. Remember that you, the potential employee, have many special and unique talents, strengths and abilities. It is up to you to discover these personal and professional attributes and articulate them on your resume without stretching the truth.

For more information regarding the following data, come to the office of Career Development in Saint Edward Hall, or phone (904)588-8346.

### CAREER RELATED EMPLOYMENT:

The South Carolina Expo for Teacher Recruitment will be June

16-17 at Gaillard Memorial Auditorium in Charleston, South Carolina. Representatives from South Carolina's School Districts will be on hand to interview and share information. Any graduating education majors looking for teaching jobs in South Carolina are welcome. Call 1(800) 476-2387 for more information.

### PART-TIME JOB:

Carrollwood Paralegal Services is looking for Criminology majors to do research at the courthouse in Dade City. Please send a resume to Mr. Michael T. Flaherty, Paralegal, Carrollwood Paralegal Services, 4577 Gunn Highway, Suite 151, Tampa, FL 33624-6371, or telephone Mr. Flaherty at (813) 264-1952.

### INTERNSHIPS:

The Berkeley Repertory Theatre in Berkeley, California is now accepting applications for interns for the next fall semester. Interns will work closely with artists, administrators, guest directors and designers. Areas of specialization include: public relations, artistic administration, costumes, sound, lighting, scenic construction, literary/dramaturgy and stage management.

The Tampa Sports Authority is gearing up for its summer and

fall internship programs. Interns will be exposed to event management, long-range facility planning, administrative policies and procedures, board-staff relationships, budgeting and supervisory practices. Some of the intern activities include: assisting in preparation for concerts, the Hall of Fame Bowl, the Florida Classic and the upcoming Buccaneer season.

The Environmental Careers Organization is now accepting applications for paid Environmental Summer Internships for People of Color. This program places students of color in entry-level professional positions in the environmental field.

### SUMMER JOBS:

Eckerd Family Youth Alternatives is now hiring Challenge Counselors for their summer camp program. Eckerd is a therapeutic and educational camping program serving troubled and/or adjudicated youth and emotionally troubled children ages 7 to 17.

### SUMMER EXPERIENCES:

BIKE-AID 1992 is an annual cross-country bicycle trek which is sponsored by the Overseas Development Network, a national

student organization. The organization involves individuals in addressing global problems of poverty and injustice by providing opportunities for activism and first-hand learning experiences. Bike-Aid cyclists will help raise money for ODN projects and development education programs. The trek will be held June 13 through August 23 starting in the United States on the West Coast and ending in Washington, D.C.

The Student Conservation Association is now accepting applications for the Resource Assistant Program. Over 900 student resource assistants work during the summer on a variety of resource management duties, choosing from over 250 locations in 35 states. Some of the subject areas to work include: forestry, recreation management, visitor assistant, wilderness management, and geology.

### DATES TO REMEMBER:

May 7, 1992 - 9 a.m. to 3 p.m. - The Annual Statewide Job Fair will be held at the University of Central Florida Arena. Over 100 employers with jobs for new college graduates will be attending. Career experts will be available to assist with job hunting needs. Bring a copy of your resume for admission.

## Don's Towing and Auto Salvage

### 24 HOUR TOWING

Engines \* Transmissions \* Tires \* Body Parts

Mechanic on Duty



4175 Pasco Road

San Antonio, FL 33576

(904) 588-3828



We accept Checks, VISA and Mastercard

OPEN 7 DAYS



## SRD Automotive

On Campus Repair Free Towing on Campus

- ▲ Major and Minor Repairs
- ▲ General Maintenance
- ▲ Mufflers and Exhaust Systems
- ▲ Oil Change - \$16.95

Brake Work Oil Changes Tune up's

\$5 Service Call on Campus

8 a.m. - 5 p.m.

Monday - Friday

(904) 588-3291

## Fast Stop Superette

523-0788

Open Monday - Saturday

6 a.m. - 9 p.m.

While supplies last

32 oz. Fountain Drink \* \$ .49

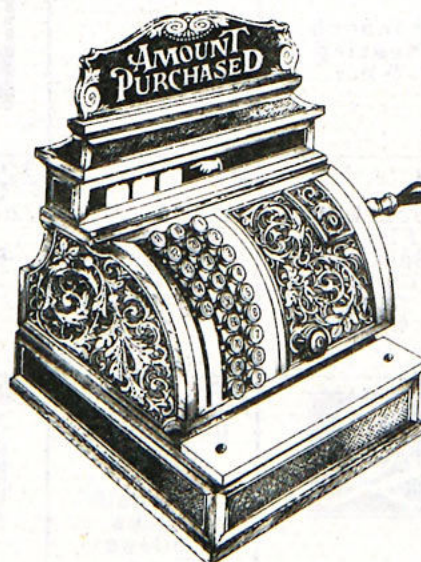
Cigarettes starting at \$1.09

3 pack Marlboro \* \$5.49

Bacardi Breezer \* \$5.99 - 4 pack

Budweiser \* \$6.79 - 12 pack

Busch \* \$5.49 - 12 pack



Full line of groceries

Best prices in town!



## Trivia

By Daniel E. Eckert  
Design Editor

### LOST IN SPACE

1. What was the surname of the family in Lost In Space?
2. Who was the reluctant stowaway in the pilot episode?
3. For what period of time were the members of the space shuttle to be in suspended animation?
4. What was the excess weight aboard the Jupiter II?
5. Who was the first person to come out of suspended animation on the Jupiter II?
6. What was the cost of the space mission?
7. How far into the mission did The Robot try to destroy the Jupiter II?
8. What was the name of Penny's monkey?
9. What did the Robinson family use to protect themselves from the sun?
10. What was the occupation of

Dr. John Robinson?

1. The surname of the Lost In Space family was Robinson?
2. The reluctant stowaway was Dr. Zachary Smith.
3. They were to be suspended animation for 5 1/2 years.
4. The excess weight was 200 pounds.
5. The first person out of suspended animation was Major West.
6. The space mission cost \$30 million.
7. The Robot tried to destroy the Jupiter II only eight hours into the mission.
8. Debbie was the name of Penny's monkey.
9. Sun shields were used to protect the Robinson family from the sun.
10. Dr. John Robinson was a geologist.

ANSWERS

## Sincerely Yours

Dear Sincerely Yours,

Do you know why it is so hard to find a job on campus? It seems like I've applied so long ago and still haven't gotten a response through Financial Aid.

- In Need of Money

Well, it seems that many students on campus are in need of jobs. Financial Aid does their best at finding open jobs for students, but there is also a waiting list. If you can be patient, I would suggest just keep waiting, but if not, try going to Dade City and see what they have available.

- Sincerely Yours

Dear Sincerely Yours,

I am interested in a foreign language on campus, mainly Spanish, but they never seem to offer a class of this nature that fits into my schedule. Any ideas for me?

- Interested Student

I understand your problem because the classes are usually conflicting with other courses. If you can hold out another semester, try going to the library. There, you can find books and literature of every language and practice your reading and writing skills. You can also go to the AV room and rent self-learning video tapes. Your options aren't as limited as you may think. Estudia mucho!

- Sincerely Yours

## Roommate Wanted

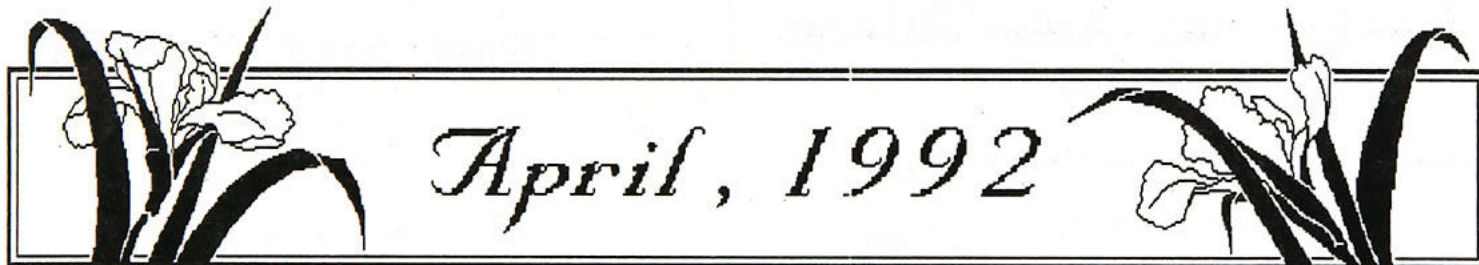
Male or Female, 1 or 2

Executive home in Zephyrhills

Garage - Study

\$250 per month

\*\*\* Call 788-6423 \*\*\*



Sunday	Monday	Tuesday	Wednesday	Thursday	Friday	Saturday
			1 April Fool's Day!	2  Chorale/Jazz Ensemble Concert 7:30 p.m.	3	4 
5  Daylight Savings	6 Monarch Meeting 5 p.m. CUB Meeting 6:30 p.m.	7 	8 Theatre Production (musical) "Something's Afoot" 7:30 p.m.	9 Theatre Production (musical) "Something's Afoot" 7:30 p.m.	10 Theatre Production (musical) "Something's Afoot" 7:30 p.m.	11 CUB Day Meltdown '92 12 pm - 6 pm Theatre Production 7:30 p.m.
12 Theatre Production (musical) "Something's Afoot" 3 p.m.	13 Monarch Meeting 5 p.m.	14	15 	16 Baseball: Flagler College 7 p.m. (home)	17 Good Friday  No Classes	18 Baseball: Florida Southern College (away)
19  Easter	20 Baseball: Florida Southern College 7 p.m. (home)	21 Baseball: Eckerd College (away)	22 Last Day of Classes Baseball: Eckerd College 3 p.m. (home)	23 Final Exams	24  Final Exams	25 Final Exams
26	27  Final Exams	28 Residence Halls Close at Noon Baseball: Rollins College 7 p.m.	29  Baseball: Rollins College (away)	30		



# SPORTS

## Intramurals about to wind down

By T.J. Stankus  
Special to the Monarch

The intramural sports program, directed by Assistant Men's Basketball Coach John Swart, is in the midst of wrapping up another successful year.

Many various sports, such as volleyball, golf, and women's touch football have been included in this year's program. In fact, almost 20 different events have been played thus far.

"We like to try a lot of different things. Some are received better than others, and we usually continue those things that are more popular," said Swart. "We like to have input from the students on what events they would like to have in the program. In fact, street hockey started out as a suggestion from a few students and now it's a great event."

Last year, 83 percent of all male full-time resident students and 52 percent of all female full-

time resident students participated in the intramurals program. This year, although exact figures are not yet available, there does not seem to be any drop of interest.

"Everything has been going pretty good," Swart added. "We have something going on just about every day, but there have been no problems - mainly because of the great group of students that work within the program."

With the semester winding down, several intramural winners have already been decided:

**Monarch Madcap Outdoor Basketball** - Unstoppable Force  
**Men's Indoor 5-on-5 Basketball** - Unstoppable Force  
**Women's Indoor 5-on-5 Basketball** - Phi Sigma Sigma Sorority  
**Women's Volleyball** - Sigma Sigma Sorority  
**Men's Volleyball** - Scott Kellyman's Team  
**Golf** - Oliver Coune

**Men's 3-on-3 Basketball** - Player's Club  
**Women's 3-on-3 Basketball** - Beemers  
**Tennis** - Don Monette  
**Basketball Free Throw Competition** - Brady Bogart  
**Women's Softball** - Theta Phi Alpha Sorority  
**Men's Touch Football** - Fred's Force  
**7-on-7 Soccer** - International Rude Boy Style  
The members of each winning team receive an Intramural Champion T-shirt.

Events that are presently underway include Men's Softball, Women's Touch Nerf Football, and Street Hockey. A Co-Ed 4-on-4 Outdoor Volleyball Tournament, a Basketball 3-point Shooting Competition, and an 8-ball Billiards Tournament are also underway.

The intramural program also offers an inexpensive aerobics class, which is taught by a cer-

tified instructor and meets three afternoons a week.

Intramurals activities, however, are not only limited to students. This year Swart set up a program for faculty/staff members that rewards them for maintaining any type of regular physical activity. Participants receive a T-shirt for completing 40 hours of activity, with anything more than seven hours per week not counting toward their total.

"We wanted to give the faculty some motivation regarding their physical fitness," said Swart. "Some of them were already doing some activity, so we wanted to encourage them to continue, as well as get more of people involved. We've got about 12 or 13 in the program now."

At the end of the semester, a male and female Intramural Athlete of the Year will be chosen. Last year, Sean McDonald and Laura McShane took the honors.

## Rejuvenated softball takes two from Tampa

By T.J. Stankus  
Special to the Monarch

It didn't take long for the College softball team to notice the return of Marivel Guterrez. Since returning from an ankle injury, Guterrez has helped the team to eight wins in its last 10 games.

A senior shortstop, Guterrez was leading the team with a .412 batting average prior to suffering ligament damage to her left ankle. The injury forced to miss 25 games.

Coach Ray Carver, who had watched his squad lose 11 of its last 14 games prior to Guterrez' return, is optimistic the team will challenge its conference opponents.

"Getting 'Beater' back has made us a much stronger team defensively," Carver said. "She is not only one of the best shortstops in the conference, but her return has made us stronger

at three positions."

With Guterrez at short, Carver has been able to return Sarah Gerald to first base. That move has allowed Sharon Sandell to move back to right field.

"She (Guterrez) also makes us stronger offensively," Carver added. "And that has boosted the confidence of everybody on the team. We are now playing the way I had expected us to play all season."

Saint Leo, which took two games from Trinity Christian College Monday (8-4, 7-2), swept a pair of games from Sunshine State Conference foe Tampa Wednesday, winning 4-3 and 4-1. The Monarchs also beat the University of North Florida 9-3 Friday, April 3, and took two from visiting Rollins College (12-2, 11-1) this past Sunday. Entering this week's action, the team was 20-18 overall and 7-7 in the conference.

In the first win over Tampa

Wednesday, Kim Edinger had two hits to lead a five-hit Monarch attack. Trailing 3-1, Saint Leo rallied for three runs in the bottom of the sixth inning. Singles by Romie Kalupy, Edinger, Janet Tucker, Beth Sylvia and a double by Gerald accounted for the runs.

Alice Astling went the distance on the mound, limiting Tampa to five hits, striking out one while not allowing a base on balls.

Guterrez had two hits, including a two-run double, to lead a six-hit attack in the second game.

Astling, who held the Spartans to six hits, retired the last 10 batters she faced, improving her personal record to 17-16.

Carver was ecstatic with the sweep of Tampa, which had lost just once in 10 conference games. "I look for us to finish well," he said. "They may not lose another game. They're very capable of winning their remaining games." The Monarchs close out the

season on the road with games at Florida Tech, Barry University, Rollins College and Florida Southern College.

## Sanchez wins conference honor

By T.J. Stankus  
Special to the Monarch

While many of his classmates were on spring break, Ralph Sanchez was being honored for breaking the spirit of opposing pitchers. The junior left fielder garnered Sunshine State Conference Player of the Week honors for a recent hitting barrage that included five home runs, three doubles, 14 RBI's, 10 runs scored, and a .444 batting average.

## Schaly wants entire program to be competitive

By T. J. Stankus  
Special to the Monarch

John Schaly, who was hired as athletic director last month, is a man with a plan. And it appears he has his priorities in order. That alone, should create optimism among all Saint Leo student-athletes.

"I'm definitely very excited about it. I'm looking forward to the opportunities and challenges of the job."

Schaly has an impressive track record, having started up the baseball program at Berry College in Rome, Georgia five years ago. He then led the team to a 155-91 record, including a District title in 1990. That team also came within two games of the NAIA World Series.

Schaly was asked what he hoped to accomplish as director of athletics. "The main thing is to become a more successful athletic program, so that we can be more

competitive in the conference." The 31-year-old baseball coach knows he has a stiff challenge ahead of him, but then he likes challenges.

"I'm definitely very excited about it. I'm looking forward to the opportunities and challenges of the job. Coach (Norm) Kaye has obviously been here a long time and has done a great job. I want to continue to build on

what he has accomplished, and basically do the best job I can."

In making the announcement of Schaly's appointment last week, College President Monsignor Frank Mouch said, "In his short time as baseball coach, John Schaly has shown a coaching attitude that complements the value system of Saint Leo College, both in his personal life and in his conduct of the program as he

deals with the students."

Schaly, 31, was hired as baseball coach in August of last year from a field of 65 applicants. Schaly's appointment filled the position left vacant when Norm Kaye stepped down to become the director of development in Institutional Advancement and men's basketball coach.

## Monarch nine at .500 after losing to Flagler

By T.J. Stankus  
Special to the Monarch

Despite out-hitting Flagler College on April 2, the Monarch baseball team ended up on the wrong end of a 7-5 decision, evening its record at 21-21. Halfway through its Sunshine State Conference schedule, the team is 4-8 in league play.

Junior Ed Bogacki hit his seventh home run of the season to take over the team lead in that category. He also singled in the ninth as the Monarchs loaded the bases. The game ended when Butch Valdes, who also had two

hits, hit into a fielders' choice.

Along with Valdes, Brian Castellano, Doug Joseph, and Bogacki all had two hits. Castellano, who is among the top five in the conference in every offensive category, hit his team-leading 16th double.

Mark Olson started on the mound and pitched six innings, scattering nine hits. He allowed seven runs, just three of which were earned. The right-hander struck out five and walked three as his record dropped to 3-4.

Brady Bogart threw three innings of one-hit ball, lowering his earned run average to 1.69.

The Citrus High product leads the team with a 5-0 record and has recorded two saves.

Coach John Schaly's club, which dropped two games to the University of Tampa this past week, will return home to host Barry University at 7 Saturday night, April 11.

A 1 o'clock game on Sun., April 12 has been designated as Pasco County Little League Day. All Little Leaguers, who wear their caps, will receive free admission and a ticket for a free hot dog and a coke. Parents also get in free.





**For Fast  
Hot Delivery  
CALL**

**TRAVERSE CITY**  
1121 East Front Street  
Traverse City, MI 49684  
Phone  
(616) 941-1767

**DADE CITY**  
426 N. 7th Street  
Dade City, FL 33525  
Phone  
(904) 567-9424

**CLERMONT**  
1041 W. Hwy. 50  
Clermont, FL 32711  
Phone  
(904) 394-8595

**HOURS**  
MON. - SAT: 10:00 a.m. - 1:00 a.m.  
SUNDAY: 12:00 Noon - 1:00 a.m.

## GJ's PIZZA

Buy One Pizza - Get One Free!  
You also receive a quart of Pepsi  
with each Pizza Order

	Sm.	Med.	Lg.
Cheese	5.15	7.10	9.55
Cheese & One Item	6.10	8.15	10.65
Cheese & Two Items	6.90	9.10	11.75
Cheese & Three Items	7.70	9.95	12.85
Cheese & Four Items	8.50	11.00	13.95
GJ's Deluxe Special	9.35	11.55	14.45
Special Orders - 5 or More Items	.80 ea.	.90 ea.	1.00 ea.
Extra Sauce			Free
Vegetarian Special	9.95	12.05	14.95
Chef's Salad			2.95
Large Pizza Slice			1.25

### BEVERAGES

Items Available On GJ's Pizza	M .50	QT .95
Pepperoni		
Mushrooms		
Bacon		
Green Peppers		
Green Olives		
Anchovies		
Ham		
Onions		
Ground Beef		
Black Olives		
Italian Sausage		
Pepsi Cola		
Diet Pepsi		
Mountain Dew		
Root Beer		

## GJ's Subs 30 Delicious Varieties

"HOT FROM THE GRILL"

	8"	12"
GJ's Original Sub Italian Meats & Cheese	3.20	4.75
Jumbo Original GJ's Original with Extra Meat & Cheese	3.80	5.65
Salami Sub & Cheese	3.25	4.90
Pizza Sub Pizza Sauce, Cheese, Pepperoni, & Mushrooms	3.25	4.90
Italian Sausage And Melted Cheese	3.25	4.90
Roast Beef And Melted Cheese	3.25	4.90
GJ's Deluxe Supreme Ham, Salami, Pepperoni, Cheese, Mushrooms, & Green Peppers	4.25	5.95
GJ's Vegetarian Special Any Combination of Mushrooms, Sweet Peppers, Black Olives, Cheese	2.90	4.30

### Steak Subs

Featuring USDA Choice  
New York Strip Steak

Steak & Cheese Sliced Wafer Thin with Melted Cheese	3.40	5.10
Jumbo Steak & Cheese Extra Meat & Cheese	3.95	5.95
Mushroom Steak Tender Juicy Steak & Mushrooms	3.40	5.10
Mushroom Steak & Cheese Add Melted Cheese	3.65	5.45
Pepper Steak & Cheese Diced Sweet Peppers & Steak	3.65	5.45
Pizza Steak & Cheese Steak, Pizza Sauce, Melted Cheese	3.60	5.35

	8"	12"
Pizza Steak & Mushrooms Steak, Pizza Sauce, Cheese, Mushrooms	3.70	5.55
Jumbo Pizza Steak Extra Meat & Cheese	4.05	6.10
GJ's Steak Special Mushrooms, Sweet Peppers, Pizza Sauce, & Cheese	3.80	5.65

### BURGER SUBS

World's Longest Cheeseburger Ground Round with Melted Cheese	2.95	4.55
Jumbo Cheeseburger Extra Meat & Cheese	3.65	5.45
Pepperburger & Cheese Diced Sweet Pepper & Ground Round	3.25	4.90
Pizzaburger & Cheese Ground Round & Pizza Sauce	3.15	4.70
Pizzaburger & Mushrooms Add Delicious Mushrooms	3.35	5.05
Jumbo Pizzaburger Extra Meat & Cheese	3.70	5.45
Mushroomburger & Cheese Add Mushrooms & Melted Cheese	3.25	4.90
GJ's Burger Special Mushrooms, Green Peppers, Pizza Sauce, & Cheese	3.80	5.65
Bacon Burger & Cheese	3.15	4.65

### HAM SUBS

Ham & Cheese Sweet Ham & Cheese	3.25	4.90
Jumbo Ham & Cheese Extra Ham & Cheese	3.80	5.65
Fried Ham & Cheese Melted Cheese & Fried Ham	3.25	4.90
Jumbo Fried Ham & Cheese Extra Ham & Cheese	3.80	5.65
Additional Items	.45	.65

All Submarines include • Crispy Fresh Lettuce • Red Ripe Tomatoes • Chopped Onions • and GJ's Own Sauce